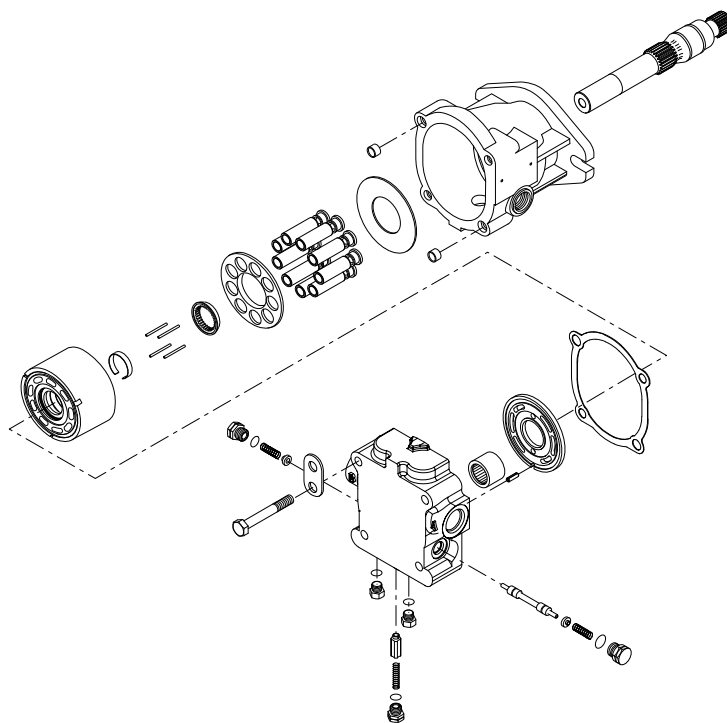


# Series 40 MMF044D and MMV044D

## Axial Piston Motors



**Revision history***Table of revisions*

Date	Changed	Rev
June 2019	Updated end cap part numbers	0203
March 2018	Update to Engineerin Tomorrow design	0202

## Contents

### General information

Service Parts Identification.....	4
Nameplate.....	4
Date code.....	5
About service bulletins.....	5
Procedure to identify a part.....	6
Regional part numbers.....	6
Example of a part identification (M44 motor).....	6
Adobe Acrobat 2-page viewing.....	7
Order code, fixed displacement.....	8
Order code, variable displacement.....	9

### Fixed displacement

Common parts and special hardware.....	10
Common parts.....	10
Special hardware NBC-NBY.....	12
Special hardware NCD-NCJ.....	14
Special hardware NCK-XXX.....	18
Shaft and shaft seal.....	22
Shaft seal.....	22
Shaft 1-D.....	24
Shaft N, S.....	28
End cap.....	30
End cap 1, 2.....	30
End cap 5, 8, 9.....	32
End cap D-G.....	36
End cap H, I, J.....	38
End cap K-U.....	42
End cap W, Y.....	46
Cylinder block kit.....	48
Housing B-U.....	50
Overhaul seal kit.....	54
Notes.....	55

### Variable displacement

Common parts and special hardware.....	56
Shaft and shaft seal.....	58
Swashplate, displacement and control features.....	60
MMV044D housing/end cap.....	62
MMV044D seal kit.....	63

### Service bulletin

SB-1998-008.....	64
SB-1998-092.....	65
SB-1999-058.....	67
SB-2000-026A.....	68
SB-2002-021.....	69
SB-2005-015.....	71
SB-2017-012.....	72

## General information

### Service Parts Identification

The following information and procedure is used to identify the module group, item number, manufacture date, part number, and part name of the parts included in the .

The parts listed include all parts which may be used when performing either "Minor Repairs", "Major Repairs" or "Conversions" on the .

### Nameplate

Each unit will have a nameplate affixed to the housing. The nameplate will include the following information:

#### Model Code

The Danfoss model code completely defines the specific unit and must be used when ordering parts to service this product.

#### Model Number

The Danfoss model number is used by the factory in manufacturing. On repeat orders, a complete unit can be ordered by the model number.

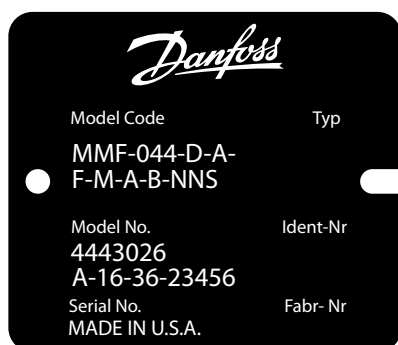
#### Serial Number

The Danfoss serial number is used to identify the manufacture date and the unit sequence in the build. The serial number is also used to identify the units warranty time period.

The letter code indicates the location of original manufacture (assembly).

The first number (2 digits) indicates the year of manufacture. The second number (2 digits) indicates the calendar week of manufacture.

The third number (5 digits) is a sequential number used to identify a specific unit.



## General information

### Date code

The date code is defined as the year and week of manufacture. The same item number may list more than one part number. This indicates that there is more than one configuration for that item number. You will see that there are different date codes for the different part numbers. Find the date code of your unit from the nameplate to determine which service part number you need to order.

*Example: The service part desired is item G30*

Order Code	Item	Date Begin	Date End	Part Number	Part Name	Qty. per Model/Kit
80	G30	89-17		8000243	End cap gasket	1
	G30		89-16	8000151	End cap gasket (SB-1995-006)	1

All units using this order code with a date code prior to 89-17 must use part number "8000151." All units with a date code of 89-17 and newer must use part number "8000243."

### About service bulletins

A Service Bulletin Number (SB-\_\_\_\_-\_\_\_\_) may follow the "Part Name" of the part you desire. You must read that Service Bulletin prior to ordering that part. The information contained in these Service Bulletins, as of the print date of this bulletin, are included at the end of this manual. Service Bulletins contain more detailed information such as interchangeability, what additional parts are involved, etc. It is suggested that you add additional Service Bulletins to this manual as you receive them.

## General information

### Procedure to identify a part

The modular design of this product results in a simplified service parts list and part number identification procedure.

The same item numbers are used for same part names on all units within a product type. A part number that has another number following it in parentheses is done to make this a world wide manual.

### Regional part numbers

Some part numbers are region specific and should be ordered accordingly.

As an example, the part number (example: 314583 (9008000-0118)) will be used. The first number is sold in Germany. The number in parentheses is sold in the United States. Customers would order 9008000-0118 if ordering the part in the United States.

### Example of a part identification (M44 motor)

The nameplate on a Series 40 motor has an order code of MMF044 D A F M A B NNS. Use the following procedure to identify the drive shaft part number.

1. Referring to the input shaft module in the [Order code, fixed displacement](#), the output shaft option for this motor is identified by the code **F**.(MMF044 D A **F**MA B NNS).
2. Referring to the Service Parts List, find the shaft group.
3. Find the order code that relates to this unit, which is **F**.
4. Follow along shaft item D01 to find the part number.

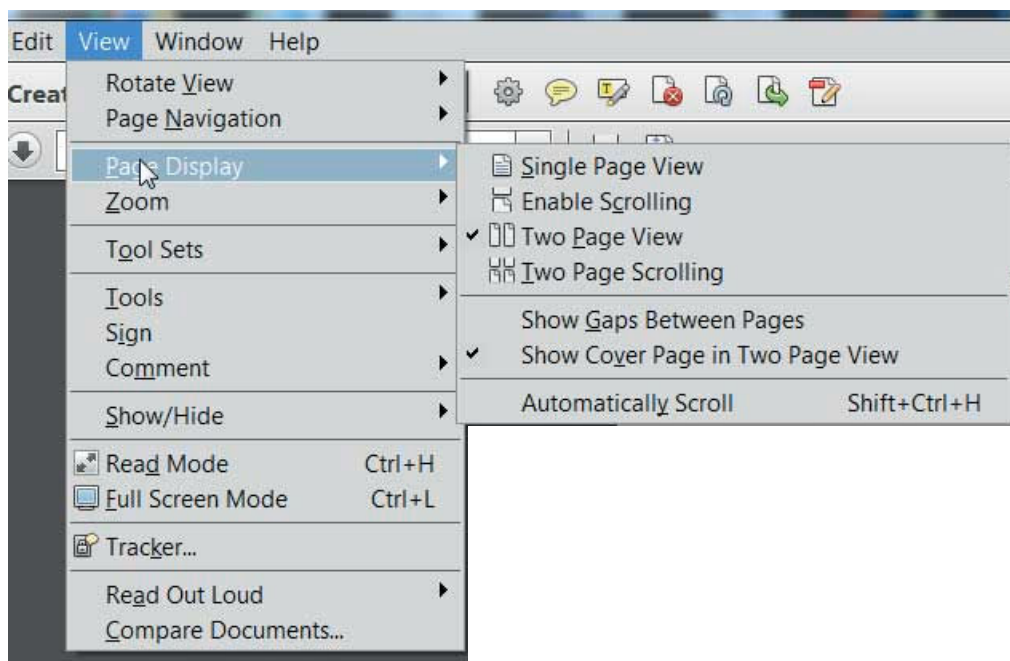
The part number found is 4350427.

## General information

### Adobe Acrobat 2-page viewing

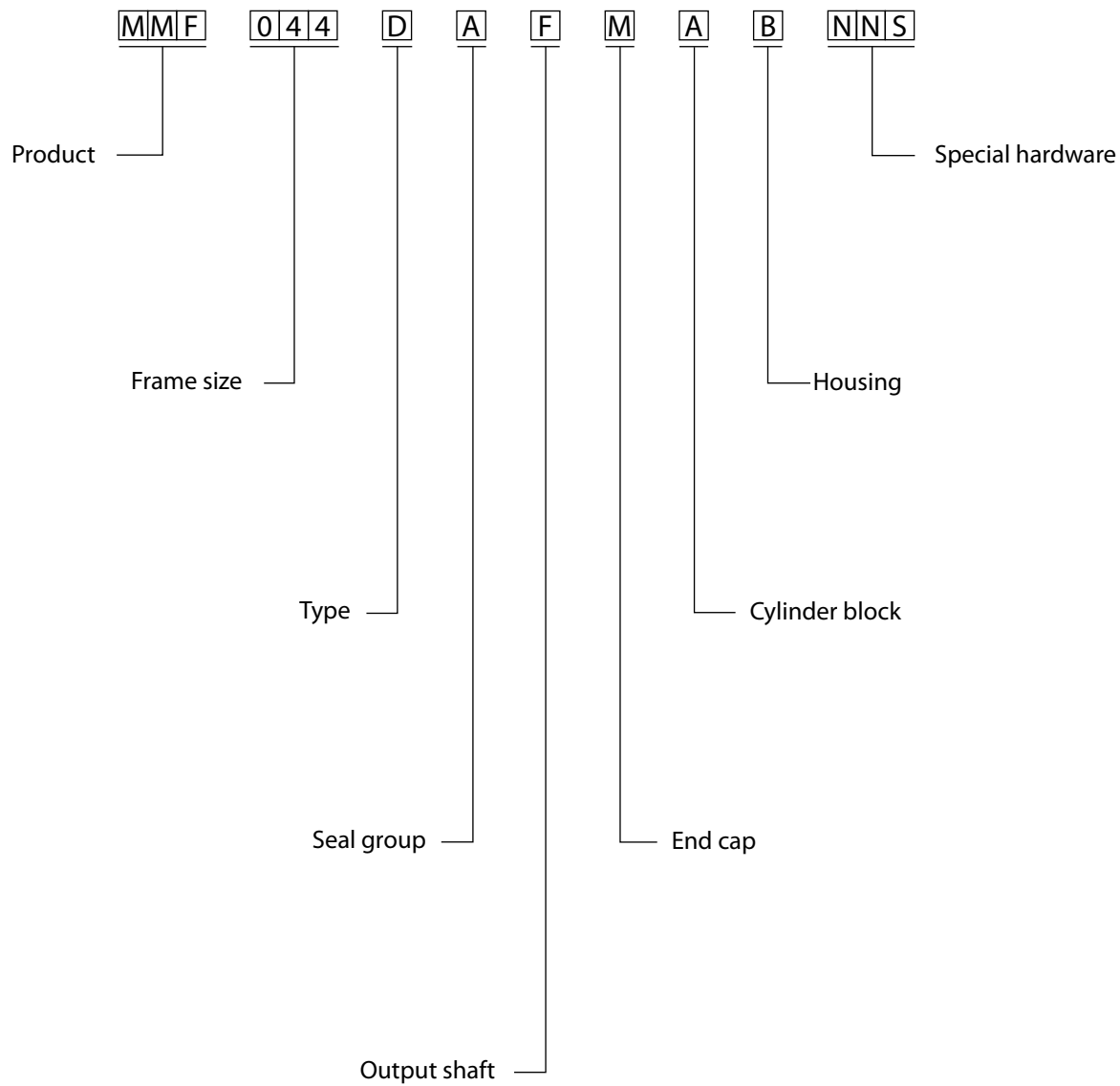
While viewing manual in Adobe Acrobat, the following settings need to be applied to ensure proper page display.

1. Select "View" → "Page Display" → "Two Page View"
2. Select "View" → "Page Display" → "Show Cover Page in Two Page View"



## General information

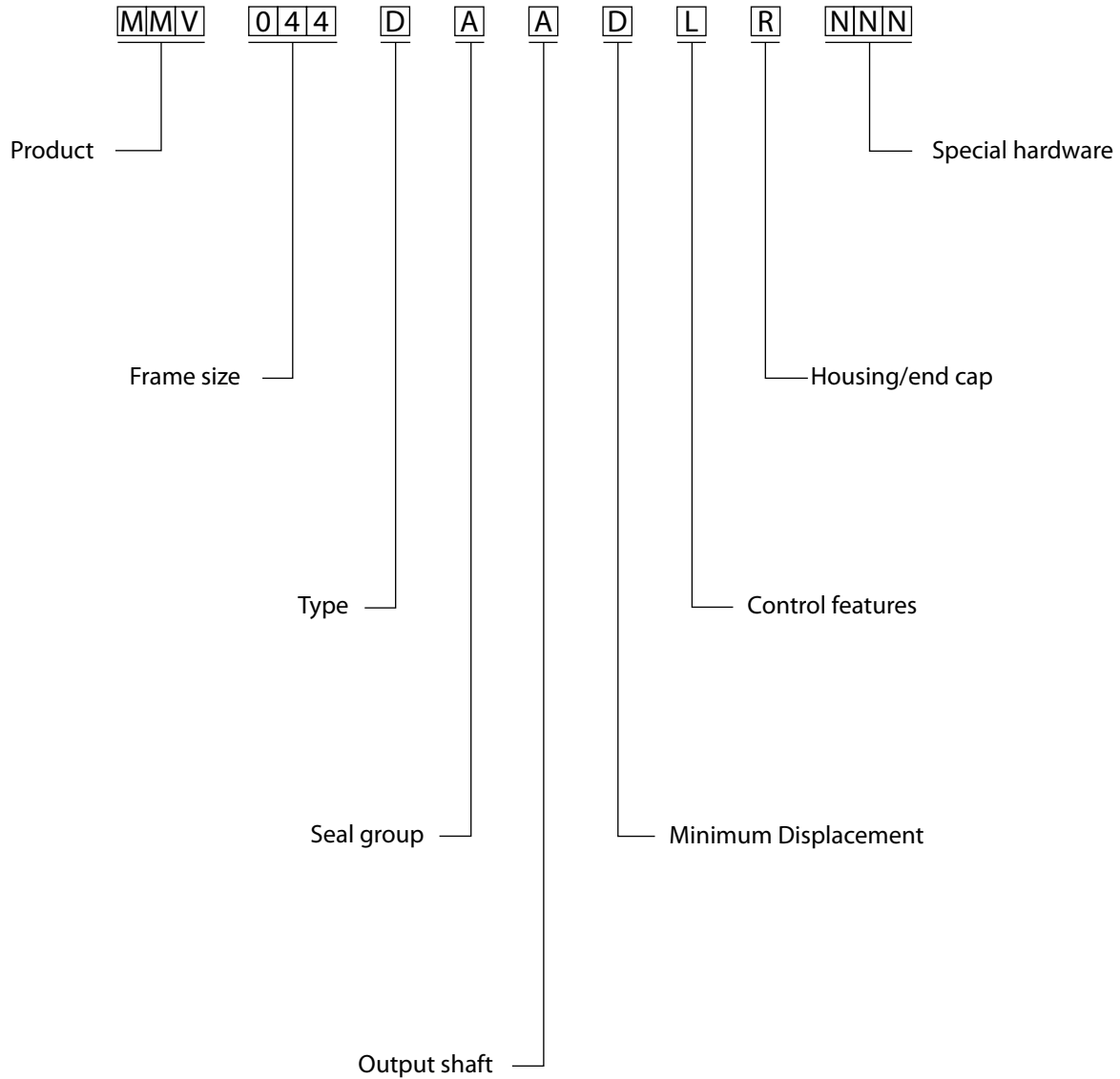
### Order code





## General information

### Order code, variable displacement

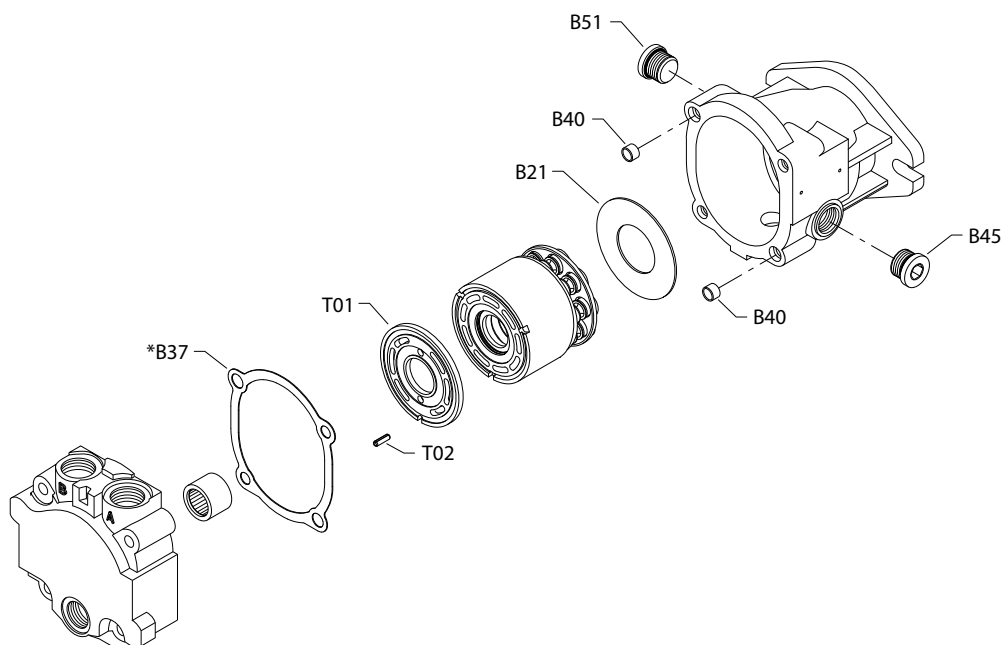


## Fixed displacement

### Common parts and special hardware

#### S40 MMF common parts

##### Parts configuration



\* Included in overhaul seal kit Q210

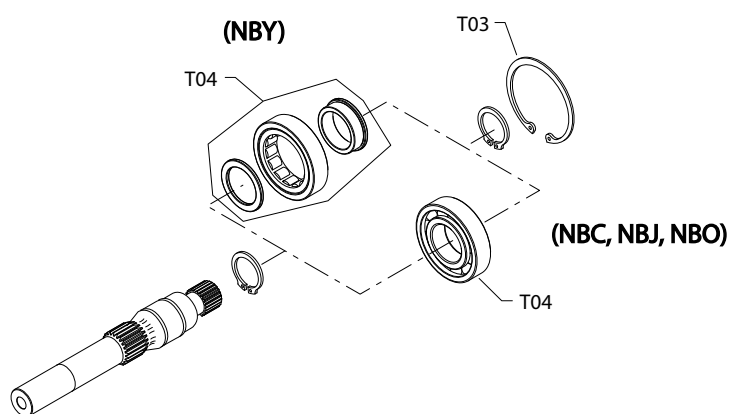
**Fixed displacement***Common parts*

Item	Date Begin	Date End	Part Number	Part Name	Qty. per Model/Kit
B21	95-42		4350148	Thrust plate	1
B37	95-42		4350089	End cap gasket	1
B40	95-42		9004875-0100	Spring pin	2
B45	95-42		315325 (9005110-8700)	Plug assembly	1
B51	95-42		315325 (9005110-8700)	Plug assembly	1
T01	95-42		4350754	Motor valve plate ( <a href="#">SB-1999-058</a> on page 67)	1
T02	95-42		9004700-1910	Slotted pin	1

**Fixed displacement**

**S40 MMF special hardware NBC-NBY**

*Parts configuration*



**Fixed displacement***Order code: NBC*

Item	Date Begin	Date End	Part Number	Part Name	Qty. per Model/Kit
T03	14-05		9006200-0281	Retaining ring	1
T04	14-05		5000731	Ball bearing	1

*Order code: NBJ*

T03	06-10		9006200-0281	Retaining ring	1
T04	06-10		5000731	Ball bearing	1

*Order code: NBO*

T03	12-13		9006200-0281	Retaining ring	1
T04	12-13		5000731	Ball bearing	1

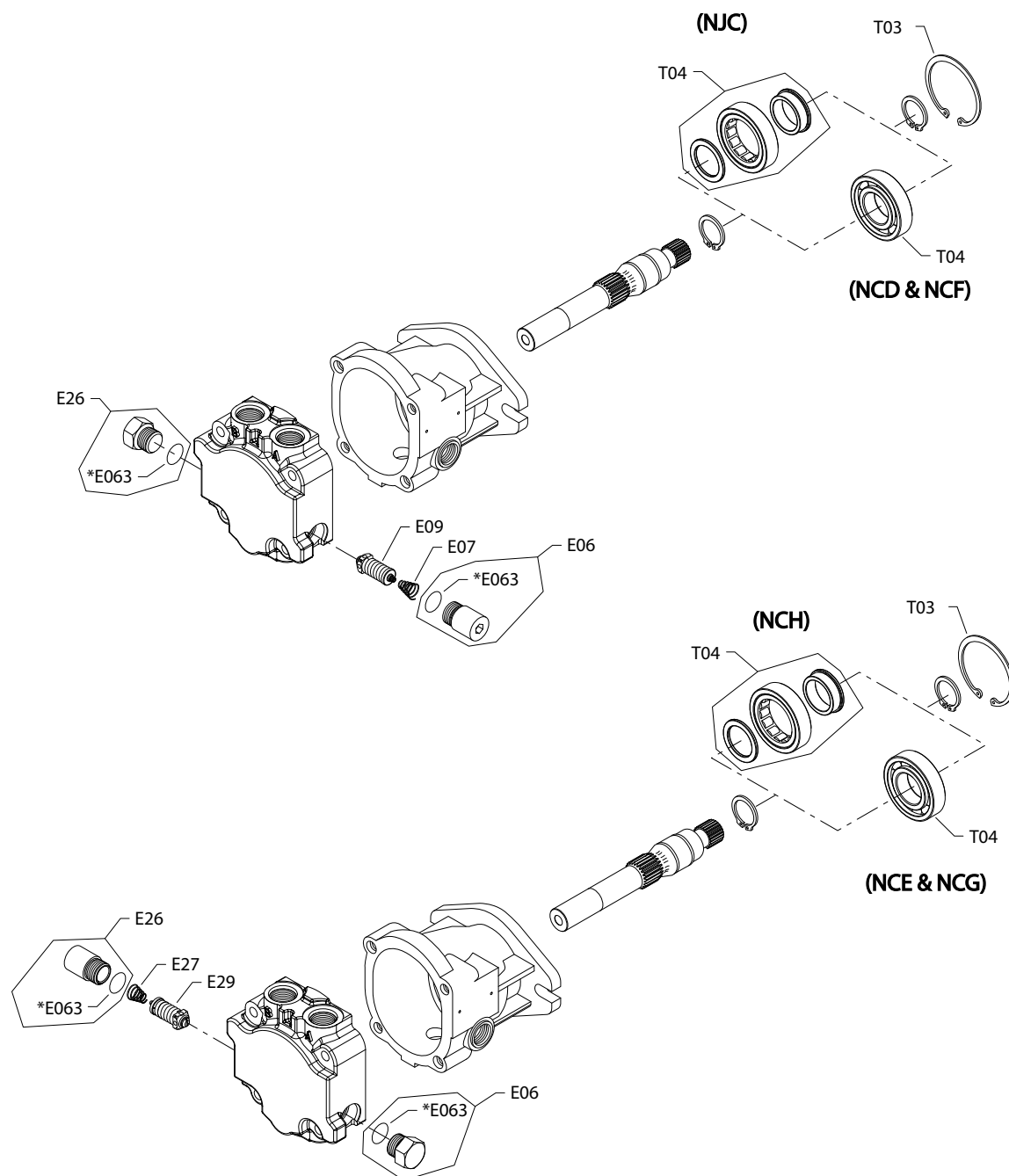
*Order code: NBY*

T03	12-36		9006200-0281	Retaining ring	1
T04	12-36		357616	Roller bearing	1

**Fixed displacement**

**S40 MMF special hardware NCD-NCJ**

*Parts configuration*



\* Included in overhaul seal kit Q210

## Fixed displacement

Order code: NCD

Item	Date Begin	Date End	Part Number	Part Name	Qty. per Model/Kit
E06	13-09		11126727	SCR plug assembly	1
E07	13-09		4800661	Spring	1
E09	13-09		3103375-0345	SCR valve, 345 bar	1
E26	13-09		9005110-7500	Plug assembly	1
E063	13-09		001131 (9004201-5000)	O-ring	2
T03	13-09		9006200-0281	Retaining ring	1
T04	13-09		5000731	Ball bearing	1

Order code: NCE

E06	13-09		9005110-7500	Plug assembly	1
E26	13-09		11126727	SCR plug assembly	1
E27	13-09		4800661	Spring	1
E29	13-09		3103375-0345	SCR valve, 345 bar	1
E063	13-09		001131 (9004201-5000)	O-ring	2
T03	13-09		9006200-0281	Retaining ring	1
T04	13-09		5000731	Ball bearing	1

Order code: NCF

E06	13-09		11126727	SCR plug assembly	1
E07	13-09		4800661	Spring	1
E09	13-09		3103375-0280	SCR valve, 280 bar	1
E26	13-09		9005110-7500	Plug assembly	1
E063	13-09		001131 (9004201-5000)	O-ring	2
T03	13-09		9006200-0281	Retaining ring	1
T04	13-09		5000731	Ball bearing	1

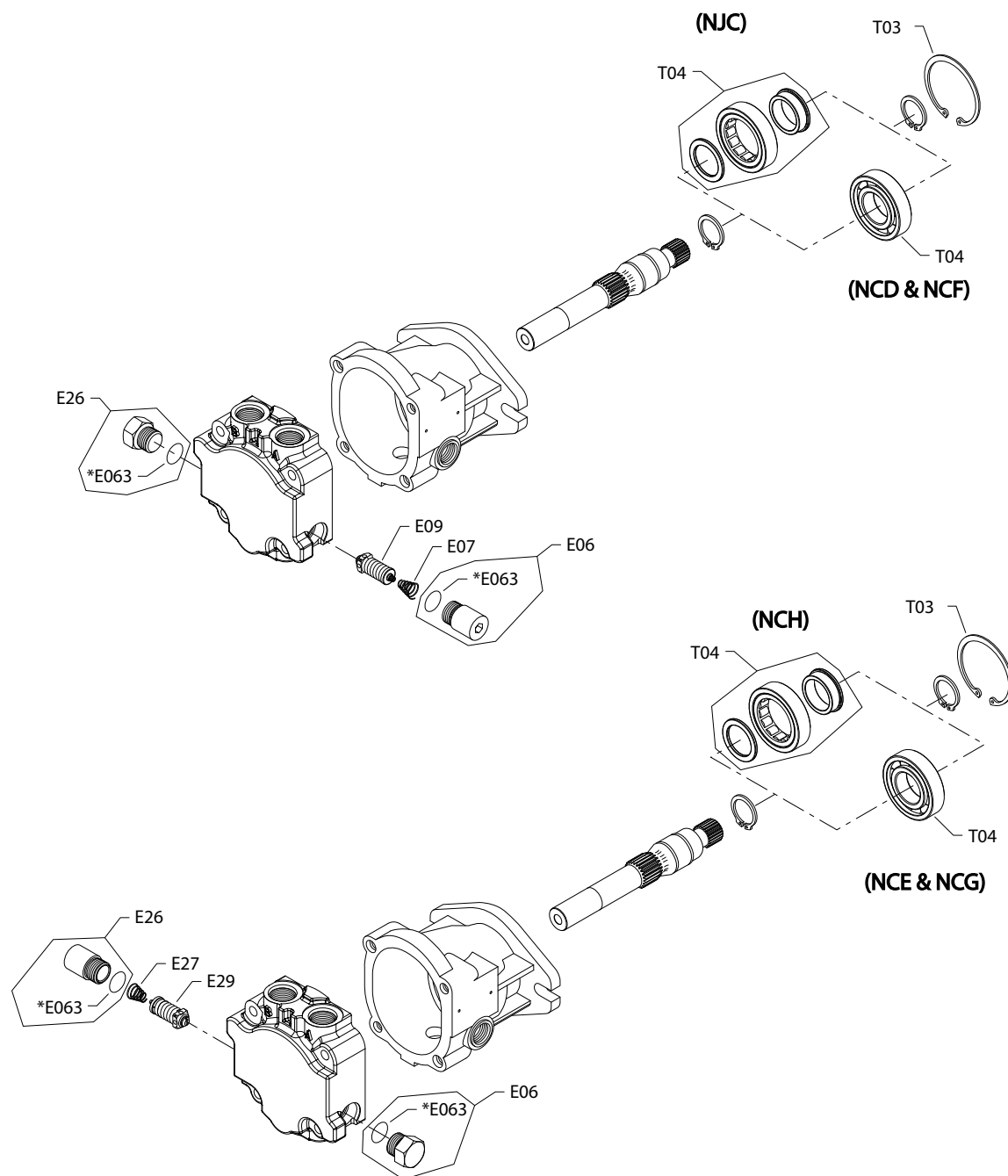
Order code: NCG

E06	13-09		9005110-7500	Plug assembly	1
E26	13-09		11126727	SCR plug assembly	1
E27	13-09		4800661	Spring	1
E29	13-09		3103375-0280	SCR valve, 280 bar	1
E063	13-09		001131 (9004201-5000)	O-ring	2
T03	13-09		9006200-0281	Retaining ring	1
T04	13-09		5000731	Ball bearing	1

[Parts continue to the next 2 pages.](#)

## Fixed displacement

### Parts configuration



\* Included in overhaul seal kit Q210



## Fixed displacement

Order code: NCH

Item	Date Begin	Date End	Part Number	Part Name	Qty. per Model/Kit
E06	14-15		9005110-7500	Plug assembly	1
E26	14-15		11126727	SCR plug assembly	1
E27	14-15		4800661	Spring	1
E29	14-15		3103375-0280	SCR valve, 280 bar	1
E063	14-15		001131 (9004201-5000)	O-ring	2
T03	14-15		9006200-0281	Retaining ring	1
T04	13-09		357616	Roller bearing	1

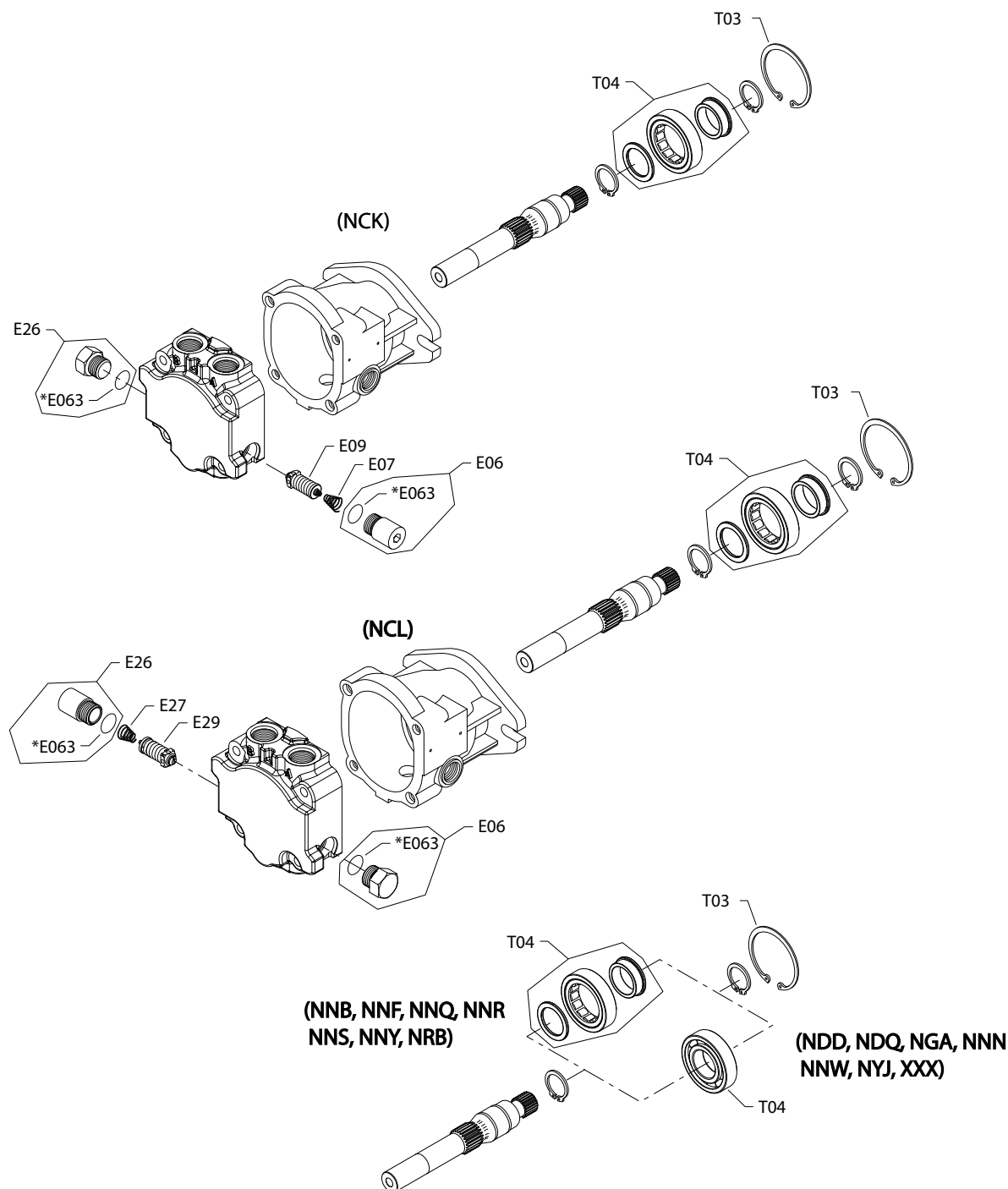
Order code: NCJ

E06	14-46		11126727	SCR plug assembly	1
E07	14-46		4800661	Spring	1
E09	14-46		3103375-0280	SCR valve, 280 bar	1
E26	14-46		9005110-7500	Plug assembly	1
E063	14-46		001131 (9004201-5000)	O-ring	2
T03	14-46		9006200-0281	Retaining ring	1
T04	14-46		357616	Roller bearing	1

# Fixed displacement

## S40 MMF special hardware NCK-NYJ

### Parts configuration



\* Included in overhaul seal kit Q210

## Fixed displacement

Order code: NCK

Item	Date Begin	Date End	Part Number	Part Name	Qty. per Model/Kit
E06	14-46		11126727	SCR plug assembly	1
E07	14-46		4800661	Spring	1
E09	14-46		3103375-0345	SCR valve, 345 bar	1
E26	14-46		9005110-7500	Plug assembly	1
E063	14-46		001131 (9004201-5000)	O-ring	1
T03	14-46		9006200-0281	Retaining ring	1
T04	14-46		357616	Roller bearing	1

Order code: NCL

E06	14-46		9005110-7500	Plug assembly	1
E26	14-46		11126727	SCR plug assembly	1
E27	14-46		4800661	Spring	1
E29	14-46		3103375-0345	SCR valve, 345 bar	1
E063	14-46		001131 (9004201-5000)	O-ring	2
T03	14-46		9006200-0281	Retaining ring	1
T04	14-46		357616	Roller bearing	1

Order code: NDD

T03	06-10		9006200-0281	Retaining ring	1
T04	06-10		5000731	Ball bearing	1

Order code: NDQ

T03	12-24		9006200-0281	Retaining ring	1
T04	12-24		5000731	Ball bearing	1

Order code: NGA

T03	06-10		9006200-0281	Retaining ring	1
T04	06-10		5000731	Ball bearing	1

Order code: NNB

T03	06-10		9006200-0281	Retaining ring	1
T04	06-10		357616	Roller bearing	1

Order code: NNF

T03	06-10		9006200-0281	Retaining ring	1
T04	06-10		357616	Roller bearing	1

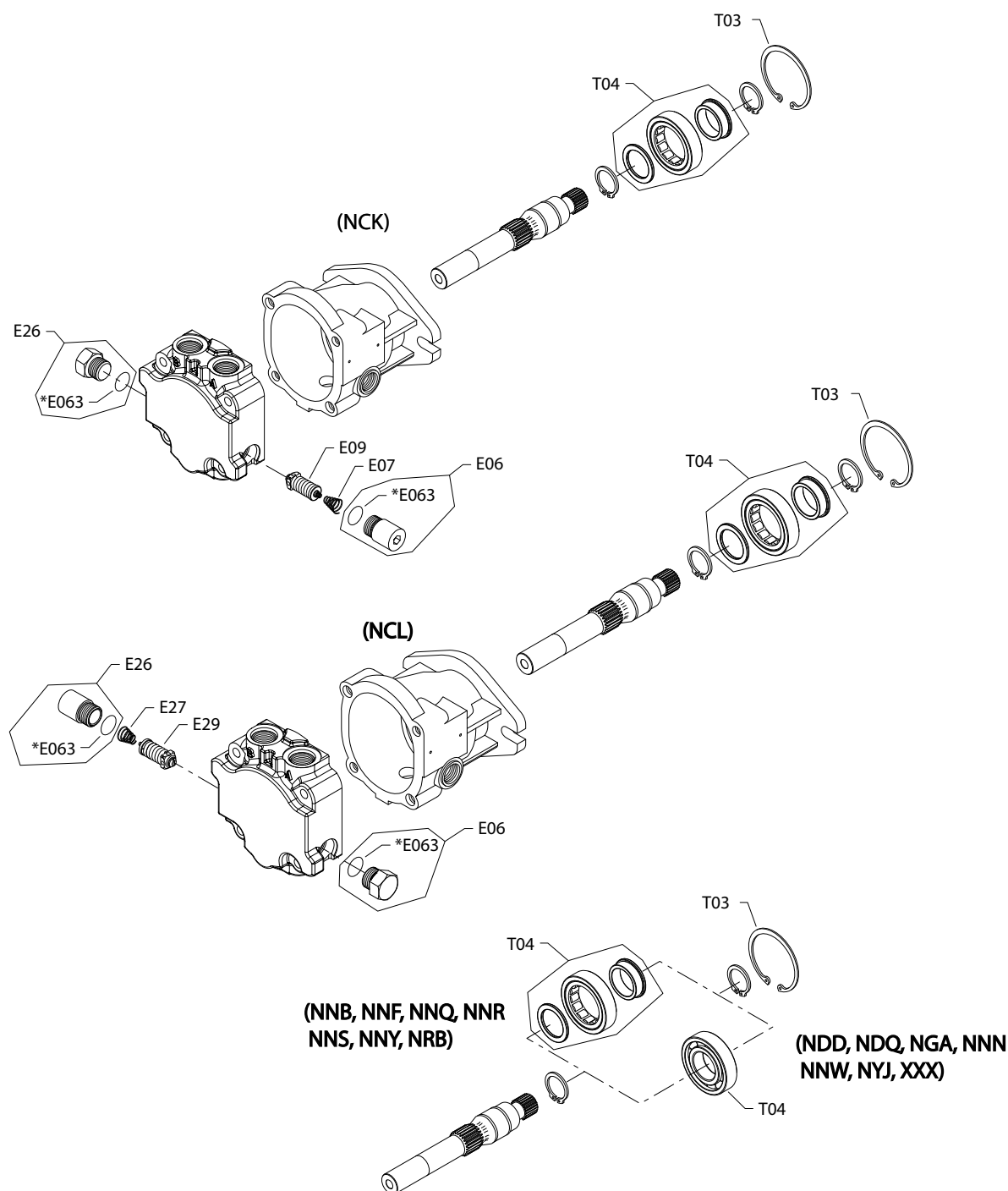
Order code: NNN

T03	95-42		9006200-0281	Retaining ring	1
T04	95-42		5000731	Ball bearing	1

[Parts continue to the next 2 pages.](#)

## Fixed displacement

### Parts configuration



\* Included in overhaul seal kit Q210

## Fixed displacement

Order code: NNQ

Item	Date Begin	Date End	Part Number	Part Name	Qty. per Model/Kit
T03	09-22		9006200-0281	Retaining ring	1
T04	09-22		357616	Roller bearing ( <a href="#">SB-1998-008</a> on page 64)	1

Order code: NNR

T03	95-42		9006200-0281	Retaining ring	1
T04	95-42		357616	Roller bearing ( <a href="#">SB-1998-008</a> on page 64)	1

Order code: NNS

T03	95-42		9006200-0281	Retaining ring	1
T04	95-42		357616	Roller bearing ( <a href="#">SB-1998-008</a> on page 64)	1

Order code: NNY

T03	06-10		9006200-0281	Retaining ring	1
T04	06-10		357616	Roller bearing ( <a href="#">SB-1998-008</a> on page 64)	1

Order code: NRB

T03	06-16		9006200-0281	Retaining ring	1
T04	06-16		357616	Roller bearing	1

Order code: NYJ

T03	06-16		9006200-0281	Retaining ring	1
T04	06-16		5000731	Ball bearing	1

Order code: XXX

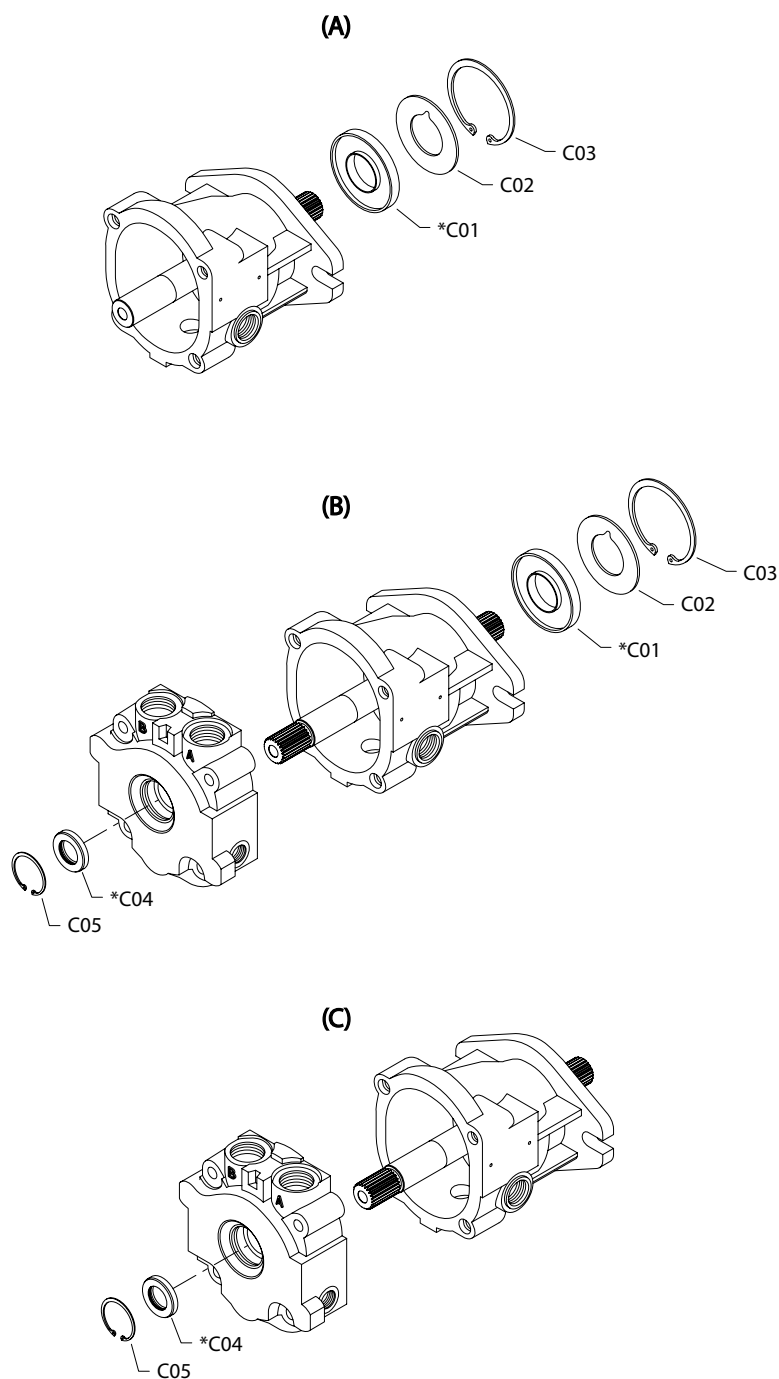
T03	06-16		9006200-0281	Retaining ring	1
T04	06-16		5000731	Ball bearing	1

**Fixed displacement**

**Shaft and shaft seal**

**S40 MMF shaft seal**

*Parts configuration*



**Fixed displacement**

\* Included in overhaul seal kit Q210

*Order code: A*

Item	Date Begin	Date End	Part Number	Part Name	Qty. per Model/Kit
C01	96-24		11103135	Lip seal	1
C02	96-24		11083729	Support washer	1
C03	96-24		9006200-0281	Retaining ring	1

*Order code: B*

C01	96-24		11103135	Lip seal	1
C02	96-24		11083729	Support washer	1
C03	96-24		9006200-0281	Retaining ring	1
C04	96-24		5000465	Lip seal	1
C05	96-24		9006200-0156	Retaining ring	1

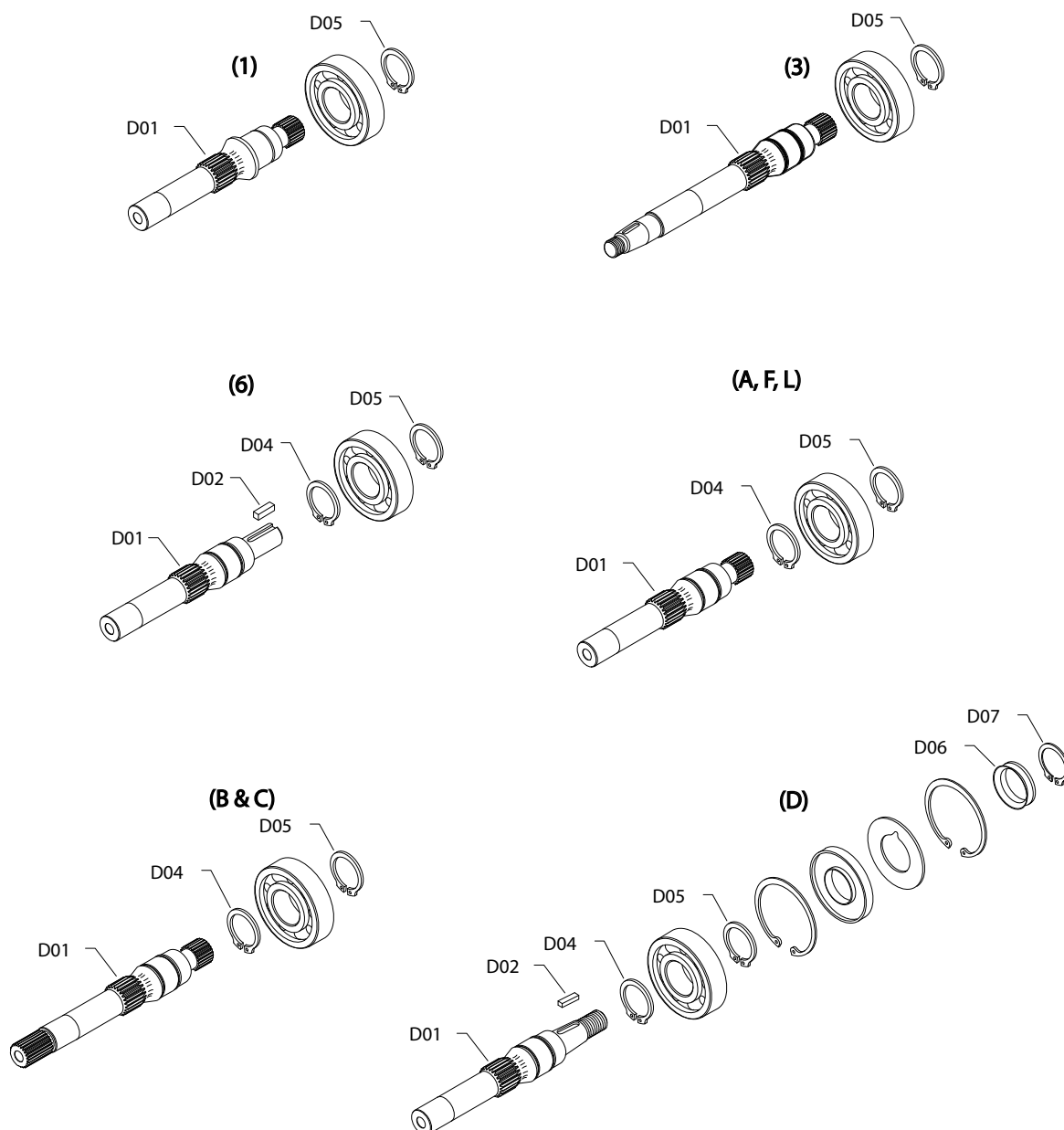
*Order code: C*

C04	96-24	08-50	5000465	Lip seal	1
C05	96-24	08-50	9006200-0156	Retaining ring	1

**Fixed displacement**

**S40 MMF shaft 6, A-L**

*Parts configuration*





## Fixed displacement

### Order code: 1

Item	Date Begin	Date End	Part Number	Part Name	Qty. per Model/Kit
D01	01-31	08-50	4350279	Shaft, 23-tooth spline, no auxiliary	1
D05	01-31	08-50	9006300-0137	Retaining ring	1

### Order code: 3

D01	02-23		4440302	Shaft, 13-tooth spline/tapered auxiliary	1
D04	02-23		9006300-0137	Retaining ring	1
D05	02-23		9006300-0137	Retaining ring	1

### Order code: 6

D01	04-04		4350843	Shaft, straight keyed, 1.125 diameter	1
D02	04-04		9003261-3116	Key	1
D04	04-04		9006300-0137	Retaining ring	1
D05	04-04		9006300-0137	Retaining ring	1

### Order code: A

D01	95-42		4350428	Shaft, 13-tooth spline/no auxiliary	1
D04	95-42		9006300-0137	Retaining ring	1
D05	95-42		9006300-0137	Retaining ring	1

### Order code: B

D01	18-08		11198465	Shaft, 14-tooth	1
D04	18-08		9006300-0137	Retaining ring	1
D05	18-08		9006300-0137	Retaining ring	1

### Order code: C

D01	95-42		4350430	Shaft, 13-tooth spline/13-tooth auxiliary	1
D04	95-42		9006300-0137	Retaining ring	1
D05	95-42		9006300-0137	Retaining ring	1

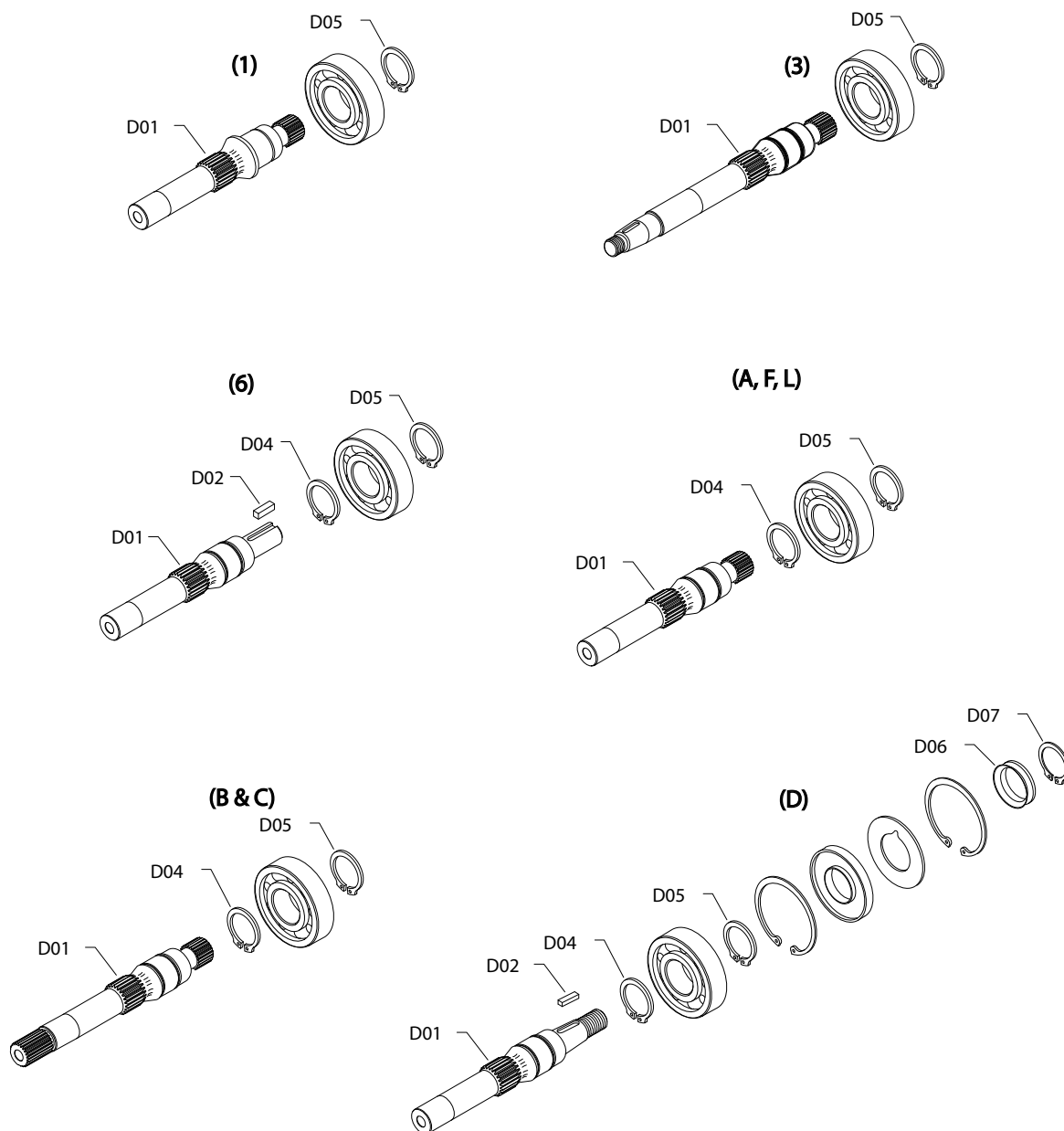
### Order code: D

D01	10-27		11083002	Shaft, taper/ no auxiliary	1
D02	10-27		5000664	Square key ( <a href="#">SB-2002-021</a> on page 69)	1
D04	10-27		9006300-0137	Retaining ring	1
D05	10-27		9006300-0137	Retaining ring	1
D06	10-27		11083450	Dust seal	1
D07	10-27		5000365	Retaining ring	1

[Parts continue to the next 2 pages.](#)

## Fixed displacement

### Parts configuration



**Fixed displacement***Order code: F*

Item	Date Begin	Date End	Part Number	Part Name	Qty. per Model Kit
D01	95-42		4350427	Shaft, 15-tooth spline/no auxiliary	1
D04	95-42		9006300-0137	Retaining ring	1
D05	95-42		9006300-0137	Retaining ring	1

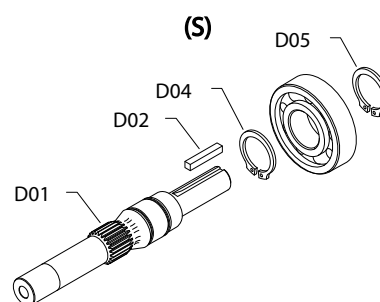
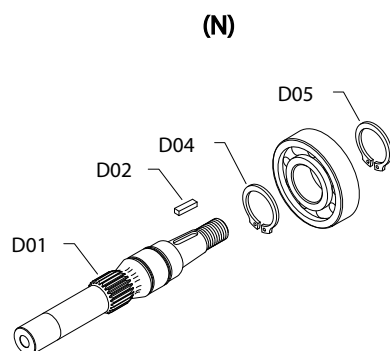
*Order code: L*

D01	96-27		4350653	Shaft, 13-tooth spline with M8 tapped hole	1
D04	96-27		9006300-0137	Retaining ring	1
D05	96-27		9006300-0137	Retaining ring	1

**Fixed displacement**

**S40 MMF shaft N-X**

*Parts configuration*



## Fixed displacement

Order code: N

Item	Date Begin	Date End	Part Number	Part Name	Qty. per Model/Kit
D01	96-27		4350805	Shaft, tapered ( <a href="#">SB-2002-021</a> on page 69)	1
D02	96-27		5000664	Square key ( <a href="#">SB-2002-021</a> on page 69)	1
D02	96-27	02-47	9003310-2514	Woodruff key	1
D04	96-27		9006300-0137	Retaining ring	1
D05	96-27		9006300-0137	Retaining ring	1

Order code: S

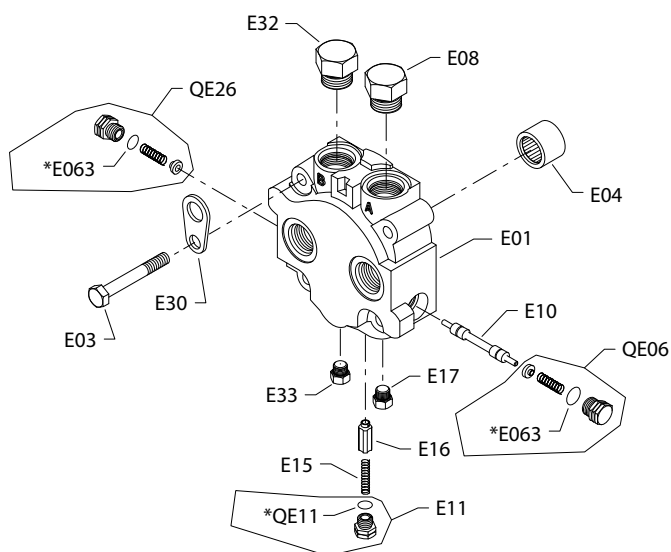
D01	95-42		4350429	Shaft, straight keyed, .875 diameter	1
D02	95-42		9003261-2524	Key	1
D04	95-42		9006300-0137	Retaining ring	1
D05	95-42		9006300-0137	Retaining ring	1

## Fixed displacement

### End cap

#### **S40 MMF end cap 1, 2**

*Parts configuration*



\* Included in overhaul seal kit Q210

## Fixed displacement

### Common parts

Item	Date Begin	Date End	Part Number	Part Name	Qty. per Model/Kit
E01	96-47		11041070	End cap, axial ports w/loop flushing	1
E03	96-47		9007210-1015	Screw	4
E04	96-47		9001465-0015	Needle bearing	1
E08	96-47		664524 (9005110-9000)	Plug assembly	1
E10	96-47		8800550	Spool	1
E11	96-47		4800280	Plug assembly	1
E15	96-47		768853	Spring	1
E17	96-47		001511 (9005100-4400)	Plug assembly	1
E30	96-47		11138846	Lifting bracket	1
E32	96-47		664524 (9005110-9000)	Plug assembly	1
E33	96-47		001511 (9005100-4400)	Plug assembly	1
E063	96-47		085043 (9004201-3700)	O-ring	2
QE06	96-47		4800912	Plug/spring assembly	1
QE11	96-47		015818 (9004201-3100)	O-ring	1
QE26	96-47		4800912	Plug/spring assembly	1

### Order code: 1

E16	96-47		4800396	Poppet	1
-----	-------	--	---------	--------	---

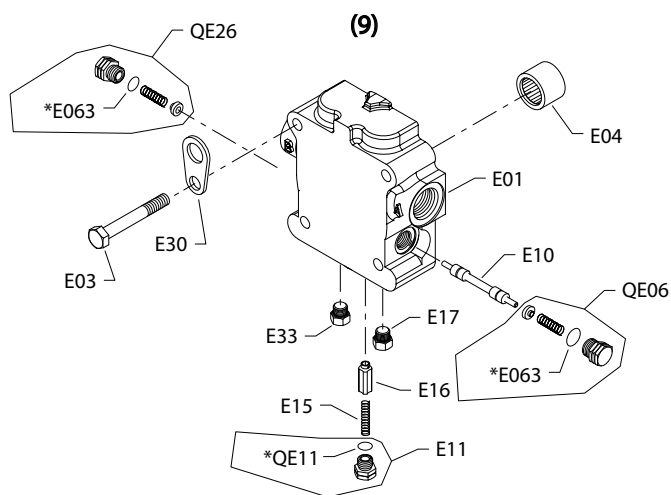
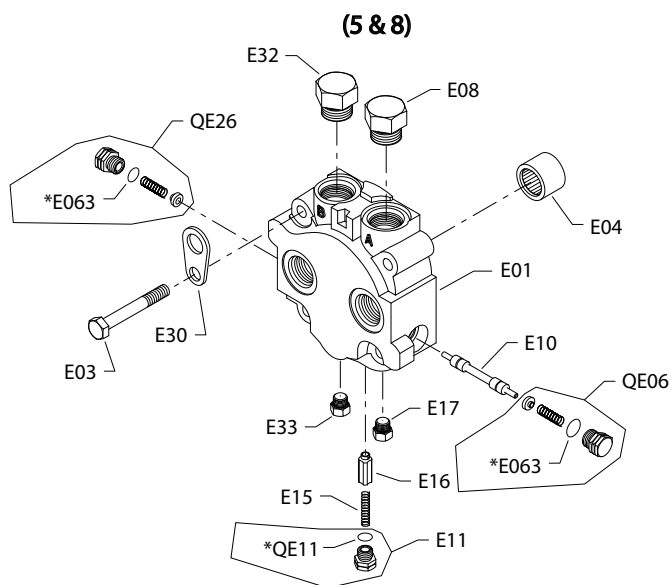
### Order code: 2

E16	96-47		1733723	Poppet	1
-----	-------	--	---------	--------	---

**Fixed displacement**

**MMF044D end cap 5-9**

*Parts configuration*



\* Included in overhaul seal kit Q210



**Fixed displacement**
*Order code: 5*

Item	Date Begin	Date End	Part Number	Part Name	Qty. per Model/Kit
E01	07-17		11041070	End cap, axial ports w/loop flushing	1
E03	07-17		9007210-1015	Screw	4
E04	07-17		9001465-0015	Needle bearing	1
E08	07-17		664524 (9005110-9000)	Plug assembly	1
E10	07-17		8800550	Spool	1
E11	07-17		4800280	Plug assembly	1
E15	07-17		768853	Spring	1
E16	07-17		4800397	Poppet, 1 - .055 orifice hole	1
E17	07-17		001511 (9005100-4400)	Plug assembly	1
E30	07-17		11138846	Lifting bracket	1
E32	07-17		664524 (9005110-9000)	Plug assembly	1
E33	07-17		001511 (9005100-4400)	Plug assembly	1
E063	07-17		085043 (9004201-3700)	O-ring	2
QE06	07-17		4800912	Plug/spring assembly	1
QE11	07-17		015818 (9004201-3100)	O-ring	1
QE26	07-17		4800912	Plug/spring assembly	1

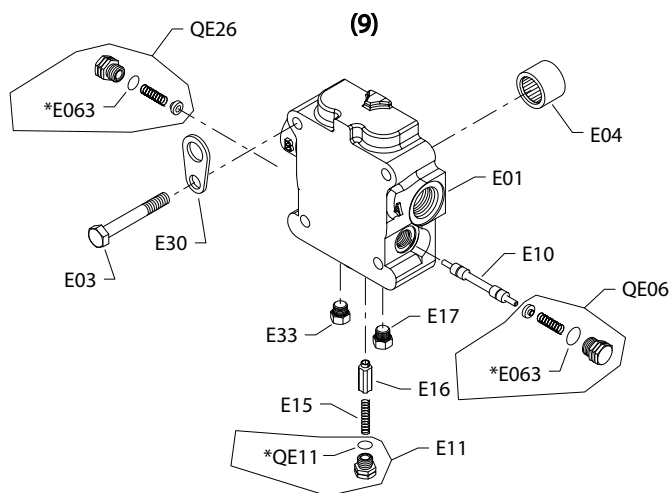
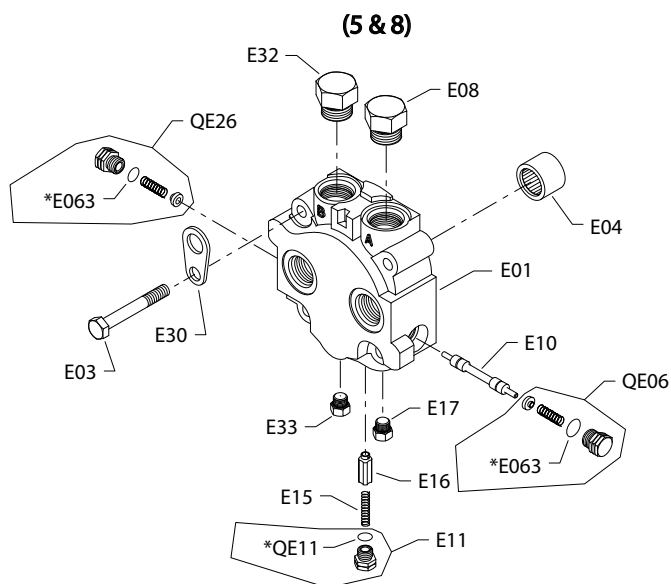
*Order code: 8*

E01	02-11		11041070	End cap, axial ports w/loop flushing	1
E03	02-11		9007210-1015	Screw	4
E04	02-11		9001465-0015	Needle bearing	1
E08	02-11		664524 (9005110-9000)	Plug assembly	1
E10	02-11		8800550	Spool	1
E11	02-11		4800280	Plug assembly	1
E15	02-11		768853	Spring	1
E16	02-11		4800825	Poppet, 4 GPM	1
E17	02-11		001511 (9005100-4400)	Plug assembly	1
E30	02-11		11138846	Lifting bracket	1
E32	02-11		664524 (9005110-9000)	Plug assembly	1
E33	02-11		001511 (9005100-4400)	Plug assembly	1
E063	02-11		085043 (9004201-3700)	O-ring	2
QE06	02-11		4800912	Plug/spring assembly	1
QE11	02-11		015818 (9004201-3100)	O-ring	1
QE26	02-11		4800912	Plug/spring assembly	1

[Parts continue to the next 2 pages.](#)

## Fixed displacement

### Parts configuration



\* Included in overhaul seal kit Q210

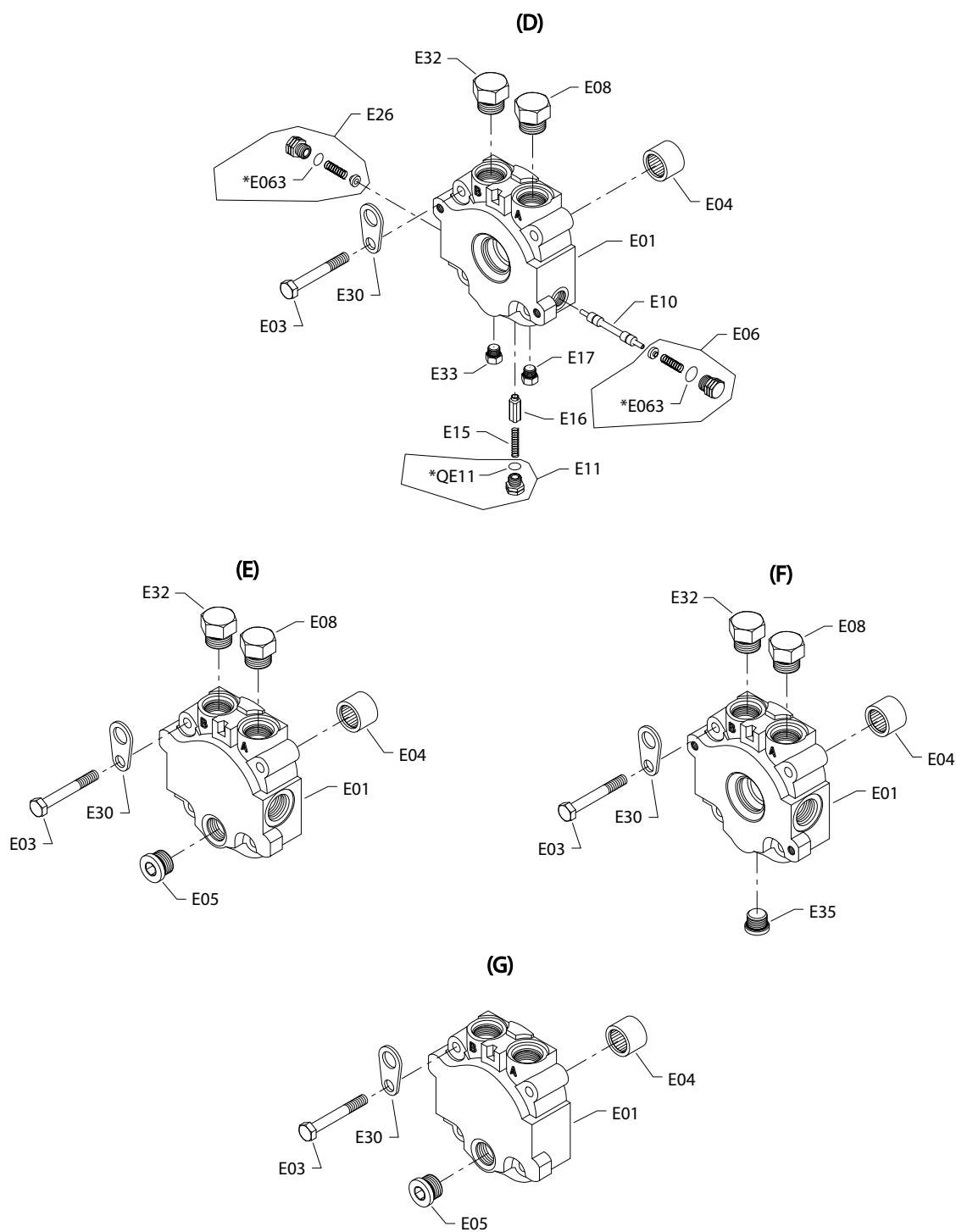
**Fixed displacement**
*Order code: 9*

Item	Date Begin	Date End	Part Number	Part Name	Qty. per Model/Kit
E01	03-02		11041072	End cap, radial ports w/loop flushing	1
E03	03-02		9007210-1015	Screw	4
E04	03-02		9001465-0015	Needle bearing	1
E10	03-02		8800550	Spool	1
E11	03-02		4800280	Plug assembly	1
E15	03-02		768853	Spring	1
E16	03-02		4800825	Poppet, 4 GPM	1
E17	03-02		001511 (9005100-4400)	Plug assembly	1
E30	03-02		11138846	Lifting bracket	1
E33	03-02		001511 (9005100-4400)	Plug assembly	1
E063	03-02		085043 (9004201-3700)	O-ring	2
QE06	03-02		4800912	Plug/spring assembly	1
QE11	03-02		015818 (9004201-3100)	O-ring	1
QE26	03-02		4800912	Plug/spring assembly	1

**Fixed displacement**

**S40 MMF end cap A-G**

*Parts configuration*



Parts Manual  
**Series 40 MMF044D and MMV044D Axial Piston Motors**

**Fixed displacement**

Order code: D

Item	Date Begin	Date End	Part Number	Part Name	Qty. per Model/Kit
E01	02-23		11041068	End cap, twin ports w/loop flushing	1
E03	02-23		9007210-1015	Screw	4
E04	02-23		9001465-0015	Needle bearing	1
E06	02-23		4800912	Plug/spring assembly	1
E10	02-23		8800550	Spool	1
E11	02-23		4800280	Plug assembly	1
E15	02-23		768853	Spring	1
E16	02-23		4800396	Poppet, 2 - .055 orifice hole	1
E17	02-23		001511 (9005100-4400)	Plug assembly	1
E26	02-23		4800912	Plug/spring assembly	1
E30	02-23		11138846	Lifting bracket	1
E33	02-23		001511 (9005100-4400)	Plug assembly	1
E063	02-23		085043 (9004201-3700)	O-ring	2
QE11	02-23		015818 (9004201-3100)	O-ring	1

Order code: E

E01	95-42		4350409	End cap, radial ports	1
E03	95-42		9007210-1015	Screw	4
E04	95-42		9001465-0015	Needle bearing	1
E05	95-42		315325 (9005110-8700)	Plug assembly	1
E08	95-42		664524 (9005110-9000)	Plug assembly	1
E30	95-42		11138846	Lifting bracket	1
E32	95-42		664524 (9005110-9000)	Plug assembly	1

Order code: F

E01	95-42		4350408	End cap, radial ports	1
E03	95-42		9007210-1015	Screw	4
E04	95-42		9001465-0015	Needle bearing	1
E08	95-42		664524 (9005110-9000)	Plug assembly	1
E30	95-42		11138846	Lifting bracket	1
E32	95-42		664524 (9005110-9000)	Plug assembly	1
E35	95-42		315325 (9005110-8700)	Plug assembly	1

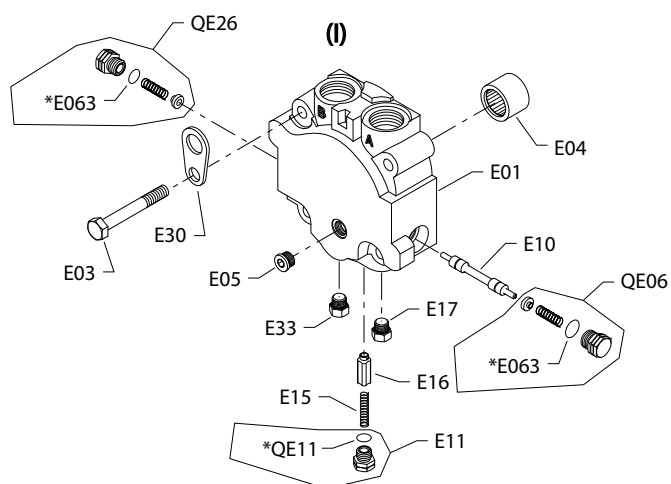
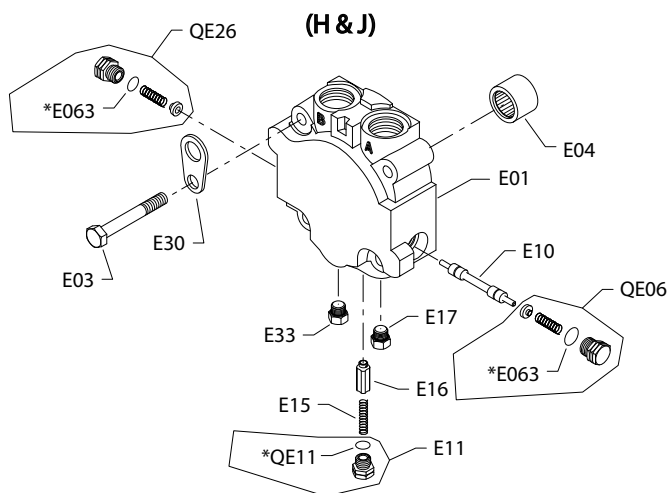
Order code: G

E01	95-42		4350418	End cap, twin ports	1
E03	95-42		9007210-1015	Screw	4
E04	95-42		9001465-0015	Needle bearing	1
E05	95-42		315325 (9005110-8700)	Plug assembly	1
E30	95-42		11138846	Lifting bracket	1

**Fixed displacement**

**S40 MMF end cap H-K**

*Parts configuration*



\* Included in overhaul seal kit Q210

## Fixed displacement

Order code: *H*

Item	Date Begin	Date End	Part Number	Part Name	Qty. per Model/Kit
E01	13-51		11041069	End cap, twin ports w/loop flushing	1
E03	13-51		9007210-1015	Screw	4
E04	13-51		9001465-0015	Needle bearing	1
E10	13-51		8800550	Spool	1
E11	13-51		4800280	Plug assembly	1
E15	13-51		768853	Spring	1
E16	13-51		4800397	Poppet	1
E17	13-51		001511 (9005100-4400)	Plug assembly	1
E30	13-51		11138846	Lifting bracket	1
E33	13-51		001511 (9005100-4400)	Plug assembly	1
E063	13-51		085043 (9004201-3700)	O-ring	2
QE06	13-51		4800912	Plug/spring assembly	1
QE11	13-51		015818 (9004201-3100)	O-ring	1
QE26	13-51		4800912	Plug/spring assembly	1

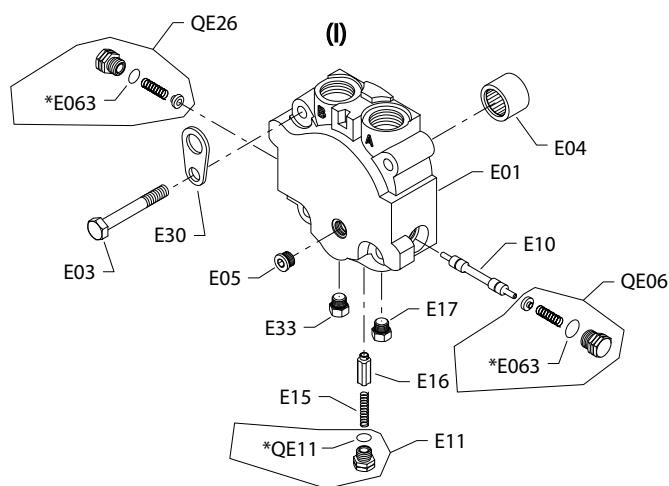
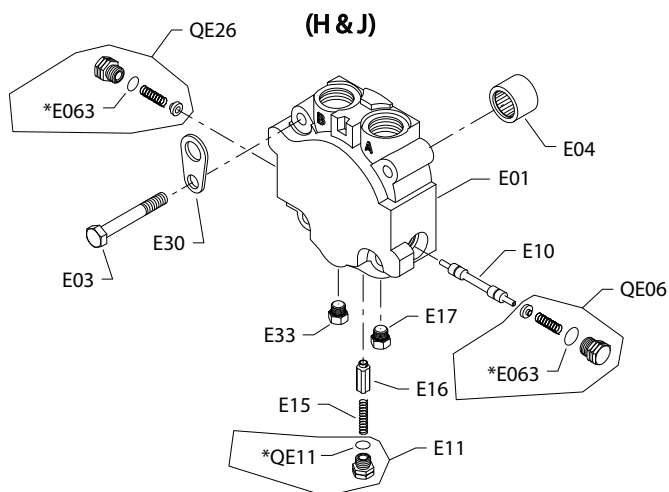
Order code: *I*

E01	13-22		11130791	End cap, axial ports w/loop flushing	1
E03	13-22		9007210-1015	Screw	4
E04	13-22		9001465-0015	Needle bearing	1
E05	13-22		9005110-5600	Plug assembly	1
E10	13-22		8800550	Spool	1
E11	13-22		4800280	Plug assembly	1
E15	13-22		768853	Spring	1
E16	13-22		4800397	Poppet	1
E17	13-22		001511 (9005100-4400)	Plug assembly	1
E30	13-22		11138846	Lifting bracket	1
E33	13-22		001511 (9005100-4400)	Plug assembly	1
E063	13-22		085043 (9004201-3700)	O-ring	2
QE06	13-22		4800912	Plug/spring assembly	1
QE11	13-22		015818 (9004201-3100)	O-ring	1
QE26	13-22		4800912	Plug/spring assembly	1

[Parts continue to the next 2 pages.](#)

**Fixed displacement**

*Parts configuration*



\* Included in overhaul seal kit Q210



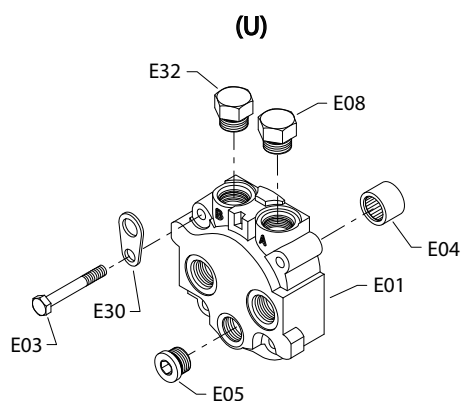
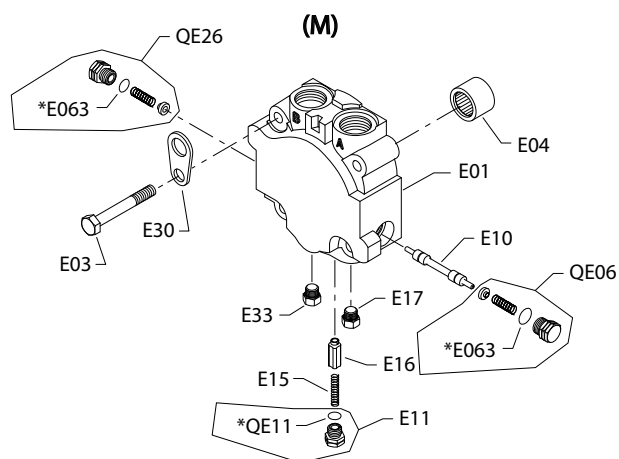
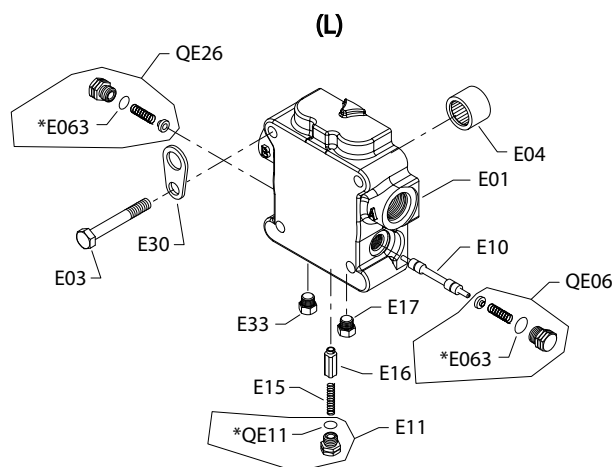
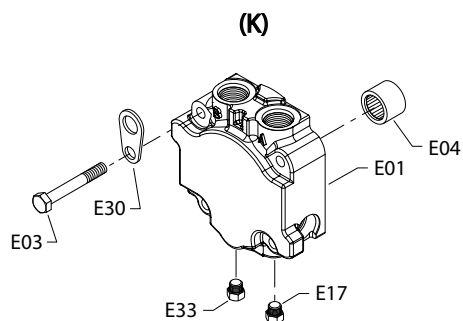
**Fixed displacement**
*Order code: J*

Item	Date Begin	Date End	Part Number	Part Name	Qty. per Model/Kit
E01	03-26		11041069	End cap, twin ports w/loop flushing	1
E03	03-26		9007210-1015	Screw	4
E04	03-26		9001465-0015	Needle bearing	1
E10	03-26		8800550	Spool	1
E11	03-26		4800280	Plug assembly	1
E15	03-26		768853	Spring	1
E16	03-26		4800825	Poppet, 4 GPM	1
E17	03-26		001511 (9005100-4400)	Plug assembly	1
E30	03-26		11138846	Lifting bracket	1
E33	03-26		001511 (9005100-4400)	Plug assembly	1
E063	03-26		085043 (9004201-3700)	O-ring	2
QE06	03-26		4800912	Plug/spring assembly	1
QE11	03-26		015818 (9004201-3100)	O-ring	1
QE26	03-26		4800912	Plug/spring assembly	1

**Fixed displacement**

**MMF044D end cap K-U**

*Parts configuration*



\* Included in overhaul seal kit Q210

## Fixed displacement

Order code: K

Item	Date Begin	Date End	Part Number	Part Name	Qty. per Model/Kit
E01	13-09		11120757	End cap, twin ports	1
E03	13-09		9007210-1015	Screw	4
E04	13-09		9001465-0015	Needle bearing	1
E17	13-09		001511 (9005100-4400)	Plug assembly	1
E30	13-09		11138846	Lifting bracket	1
E33	13-09		001511 (9005100-4400)	Plug assembly	1

Order code: L

E01	13-51		11041072	End cap, radial ports w/loop flushing	1
E03	13-51		9007210-1015	Screw	4
E04	13-51		9001465-0015	Needle bearing	1
E10	13-51		8800550	Spool	1
E11	13-51		4800280	Plug assembly	1
E15	13-51		768853	Spring	1
E16	13-51		1733723	Poppet	1
E17	13-51		001511 (9005100-4400)	Plug assembly	1
E30	13-51		11138846	Lifting bracket	1
E33	13-51		001511 (9005100-4400)	Plug assembly	1
E063	13-51		085043 (9004201-3700)	O-ring	2
QE06	13-51		4800912	Plug/spring assembly	1
QE11	13-51		015818 (9004201-3100)	O-ring	1
QE26	13-51		4800912	Plug/spring assembly	1

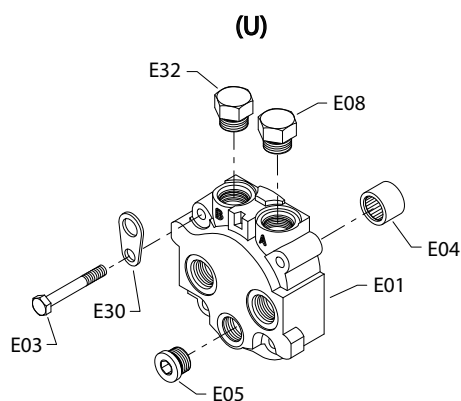
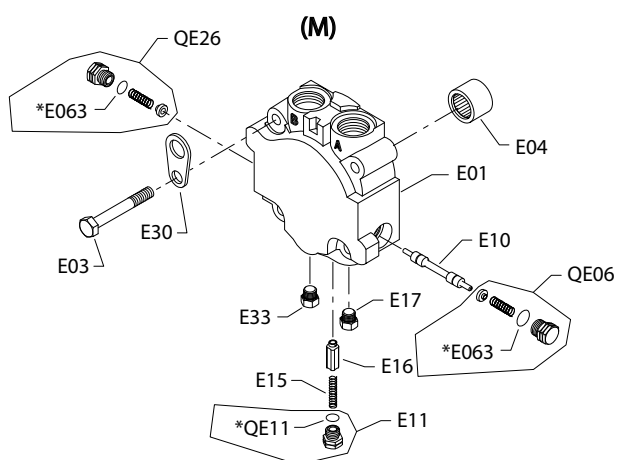
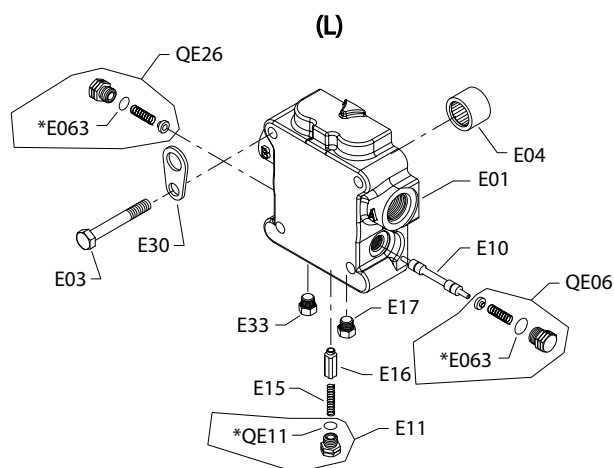
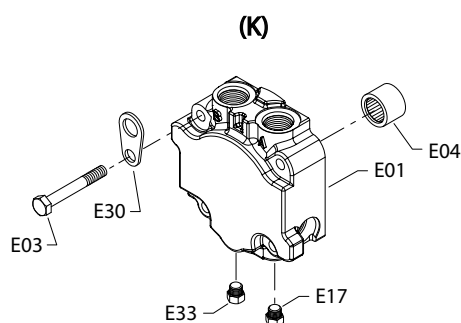
Order code: M

E01	95-42		11041069	End cap, twin ports w/loop flushing	1
E03	95-42		9007210-1015	Screw	4
E04	95-42		9001465-0015	Needle bearing	1
E10	95-42		8800550	Spool	1
E11	95-42		4800280	Plug assembly	1
E15	95-42		768853	Spring	1
E16	95-42		4800396	Poppet	1
E17	95-42		001511 (9005100-4400)	Plug assembly	1
E30	95-42		11138846	Lifting bracket	1
E33	95-42		001511 (9005100-4400)	Plug assembly	1
E063	95-42		085043 (9004201-3700)	O-ring	2
QE06	95-42		4800912	Plug/spring assembly	1
QE11	95-42		015818 (9004201-3100)	O-ring	1
QE26	95-42		4800912	Plug/spring assembly	1

[Parts continue to the next 2 pages.](#)

## Fixed displacement

### Parts configuration



\* Included in overhaul seal kit Q210

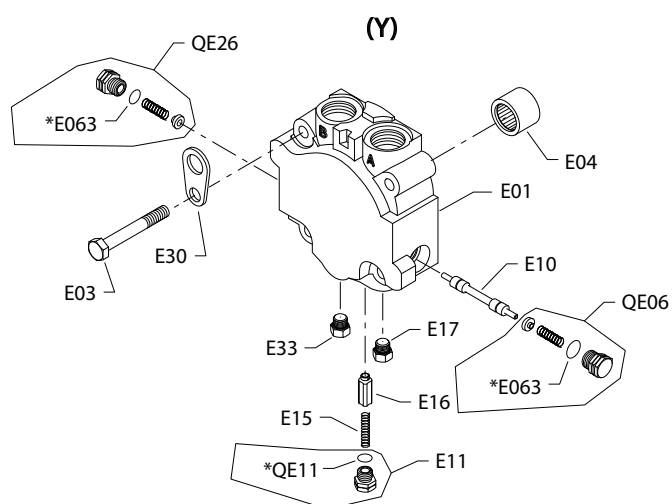
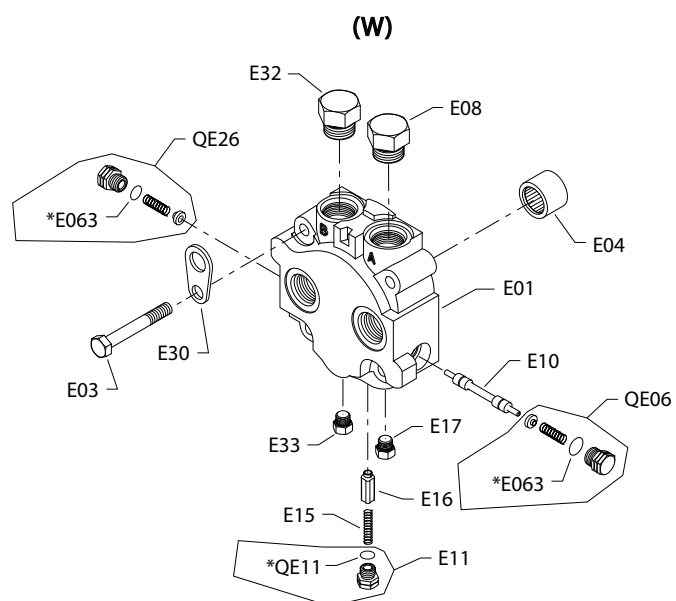
**Fixed displacement***Order code: U*

Item	Date Begin	Date End	Part Number	Part Name	Qty. per Model/Kit
E01	95-42		4350407	End cap, axial ports	1
E03	95-42		9007210-1015	Screw	4
E04	95-42		9001465-0015	Needle bearing	1
E05	95-42		315325 (9005110-8700)	Plug assembly	1
E08	95-42		664524 (9005110-9000)	Plug assembly	1
E30	95-42		11138846	Lifting bracket	1
E32	95-42		664524 (9005110-9000)	Plug assembly	1

**Fixed displacement**

**MMF044D end cap W, Y**

*Parts configuration*



\* Included in overhaul seal kit Q210

## Fixed displacement

Order code: W

Item	Date Begin	Date End	Part Number	Part Name	Qty. per Model/Kit
E01	07-17		11041070	End cap, axial ports w/loop flushing	1
E03	07-17		9007210-1015	Screw	4
E04	07-17		9001465-0015	Needle bearing	1
E08	07-17		664524 (9005110-9000)	Plug assembly	1
E10	07-17		8800550	Spool	1
E11	07-17		4800280	Plug assembly	1
E15	07-17		768853	Spring	1
E16	07-17		11028490	Poppet, 1 - .031 orifice hole	1
E17	07-17		001511 (9005100-4400)	Plug assembly	1
E30	07-17		11138846	Lifting bracket	1
E32	07-17		664524 (9005110-9000)	Plug assembly	1
E33	07-17		001511 (9005100-4400)	Plug assembly	1
E063	07-17		085043 (9004201-3700)	O-ring	2
QE06	07-17		4800912	Plug/spring assembly	1
QE11	07-17		015818 (9004201-3100)	O-ring	1
QE26	07-17		4800912	Plug/spring assembly	1

Order code: Y

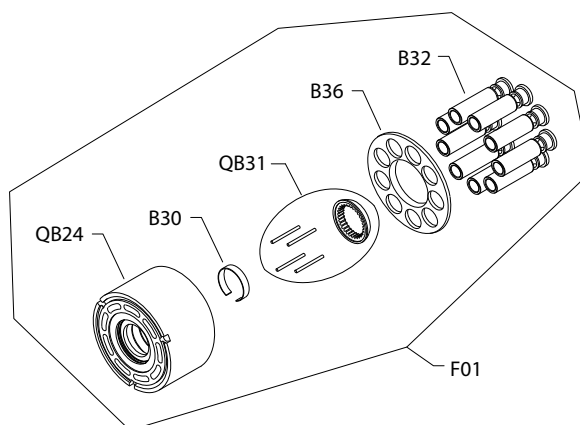
E01	96-14		11041069	End cap, twin ports w/loop flushing	1
E03	96-14		9007210-1015	Screw	4
E04	96-14		9001465-0015	Needle bearing	1
E10	96-14		8800550	Spool	1
E11	96-14		4800280	Plug assembly	1
E15	96-14		768853	Spring	1
E16	96-14		1733723	Poppet	1
E17	96-14		001511 (9005100-4400)	Plug assembly	1
E30	96-14		11138846	Lifting bracket	1
E33	96-14		001511 (9005100-4400)	Plug assembly	1
E063	96-14		085043 (9004201-3700)	O-ring	2
QE06	96-14		4800912	Plug/spring assembly	1
QE11	96-14		015818 (9004201-3100)	O-ring	1
QE26	96-14		4800912	Plug/spring assembly	1

**Fixed displacement**

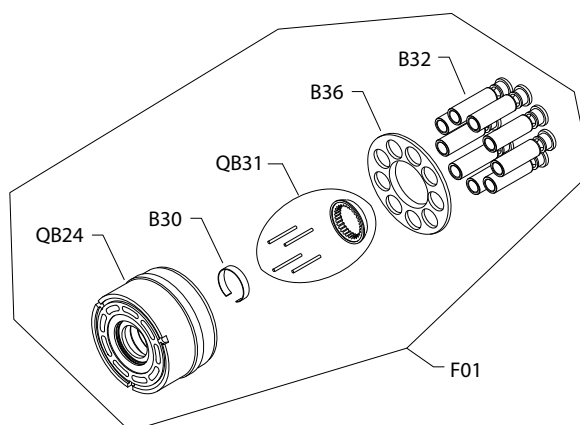
**MMF044D cylinder block kit**

*Parts configuration*

**(A & G)**



**(C)**





## Fixed displacement

Order code: A

Item	Date Begin	Date End	Part Number	Part Name	Qty. per Model/Kit
F01	96-26		4440004	Cylinder block kit	1
B30	96-26		4350048	Holddown pin retainer	1
B32	96-26		4440003	Piston assembly	9
B36	96-26		4350185	Slipper retainer	1
QB24	96-26		11131906	Cylinder block assembly	1
QB31	17-12		11178525	SVC kit ( <a href="#">SB-2017-012</a> on page 72)	

Order code: C

F01	96-26		4440023	Cylinder block kit, w/magnetic speed ring	1
B30	96-26		4350048	Holddown pin retainer	1
B32	96-26		4440003	Piston assembly	9
B36	96-26		4350185	Slipper retainer	1
QB24	96-26		11178867	Cylinder block assembly w/speed ring	1
QB31	17-12		11178525	SVC kit ( <a href="#">SB-2017-012</a> on page 72)	

Order code: G

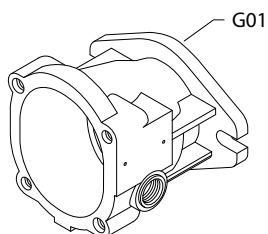
F01	04-04		4440232	Cylinder block kit, 97% balance	1
B30	04-04		4350048	Holddown pin retainer	1
B32	04-04		4440231	Piston assembly, 97% balance	9
B36	04-04		4350185	Slipper retainer	1
QB24	04-04		11131906	Cylinder block assembly	1
QB31	17-12		11178525	SVC kit ( <a href="#">SB-2017-012</a> on page 72)	

**Fixed displacement**

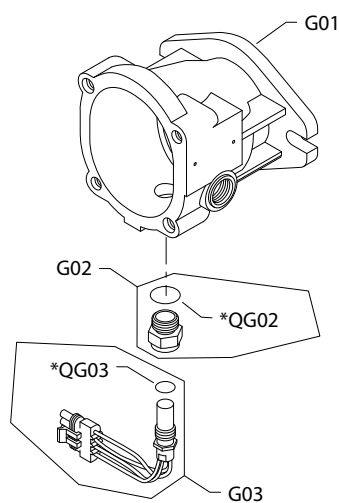
**S40 MMF housing B-U**

*Parts configuration*

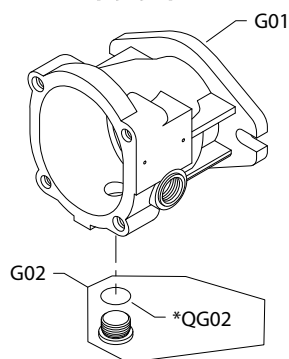
**(B)**



**(D, F, K, N, P, T)**



**(G, S, U)**



\* Included in overhaul seal kit Q210

Parts Manual  
**Series 40 MMF044D and MMV044D Axial Piston Motors**

## Fixed displacement

Order code: B

Item	Date Begin	Date End	Part Number	Part Name	Qty. per Model/kit
G01	95-42		4350351	Fixed motor housing	1

Order code: D

G01	95-42		4350420	Fixed motor housing w/speed sensor port	1
G02	95-42		4800432	Adapter assembly	1
G03	95-42		KPPG13408	Speed sensor	1
QG02	95-42		001149 (9004201-6200)	O-ring	1
QG03	95-42		085043 (9004201-3700)	O-ring	1

Order code: F

G01	99-17		4350420	Fixed motor housing w/speed sensor port	1
G02	99-17		4800432	Adapter assembly	1
G03	99-17		KPPG156	Speed sensor	1
QG02	99-17		001149 (9004201-6200)	O-ring	1
QG03	99-17		085043 (9004201-3700)	O-ring	1

Order code: G

G01	98-28		4350420	Fixed motor housing w/speed sensor port	1
G02	98-28		9005110-8700	Plug assembly	1
QG02	98-28		001149 (9004201-6200)	O-ring	1

Order code: K

G01	99-08		4350420	Fixed motor housing w/speed sensor port	1
G02	99-08		4800432	Adapter assembly	1
G03	99-08		KPPG16511	Speed sensor	1
QG02	99-08		001149 (9004201-6200)	O-ring	1
QG03	99-08		085043 (9004201-3700)	O-ring	1

Order code: N

G01	07-30		4350420	Fixed motor housing w/speed sensor port	1
G02	07-30		4800432	Adapter assembly	1
G03	07-30		KPPG16008	Speed sensor	1
QG02	07-30		001149 (9004201-6200)	O-ring	1
QG03	07-30		085043 (9004201-3700)	O-ring	1

Order code: R

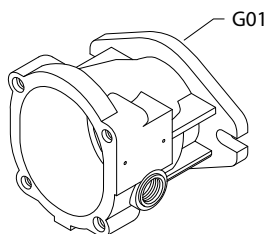
G01	14-15		4350420	Fixed motor housing w/speed sensor port	1
G02	14-15		4800432	Adapter assembly	1
G03	14-15		KPPG13703	Speed sensor	1
QG02	14-15		001149 (9004201-6200)	O-ring	1
QG03	14-15		085043 (9004201-3700)	O-ring	1

[Parts continue to the next 2 pages.](#)

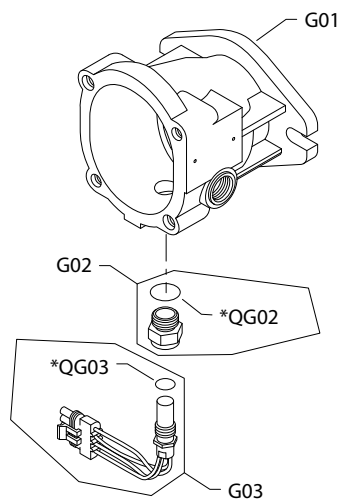
**Fixed displacement**

*Parts configuration*

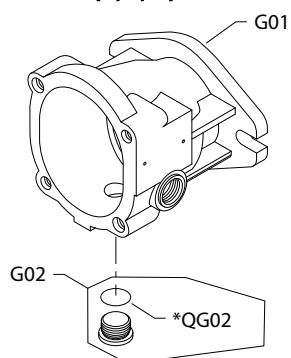
**(B)**



**(D, F, K, N, P, T)**



**(G, S, U)**



\* Included in overhaul seal kit Q210

**Fixed displacement***Order code: T*

Item	Date Begin	Date End	Part Number	Part Name	Qty. per Model/Kit
G01	07-30		4350420	Fixed motor housing w/speed sensor port	1
G02	07-30		4800432	Adapter assembly	1
G03	07-30		KPPG16708	Speed sensor	1
QG02	07-30		001149 (9004201-6200)	O-ring	1
QG03	07-30		085043 (9004201-3700)	O-ring	1

*Order code: U*

G01	04-04		4350842	Fixed motor housing, 33/41cc	1
G02	04-04		9005110-8700	Plug assembly	1
QG02	04-04		001149 (9004201-6200)	O-ring	1

## Fixed displacement

### MMF044D seal kit

Item	Date Begin	Date End	Part Number	Part Name	Qty. per Model/Kit
Q210	95-42		11114238	Overhaul seal kit, MMF035/44D	1
B37	95-42		4350089	End cap gasket	1
C01	95-42		11103135	Lip seal	1
C04	95-42		5000465	Lip seal	1
C09	95-42		9008000-0131	Lip seal	1
E063	95-42		085043 (9004201-3700)	O-ring, .468 x .078, nitrile, 90D	2
E063	95-42		001131 (9004201-5000)	O-ring, .644 x .087, nitrile, 90D	2
QE11	95-42		015818 (9004201-3100)	O-ring, .414 x .072, nitrile, 90D	1
QG02	95-42		085043 (9004201-6200)	O-ring, .755 x .097, nitrile, 90D	1
QG03	95-42		085043 (9004201-3700)	O-ring, .468 x .078, nitrile, 90D	1

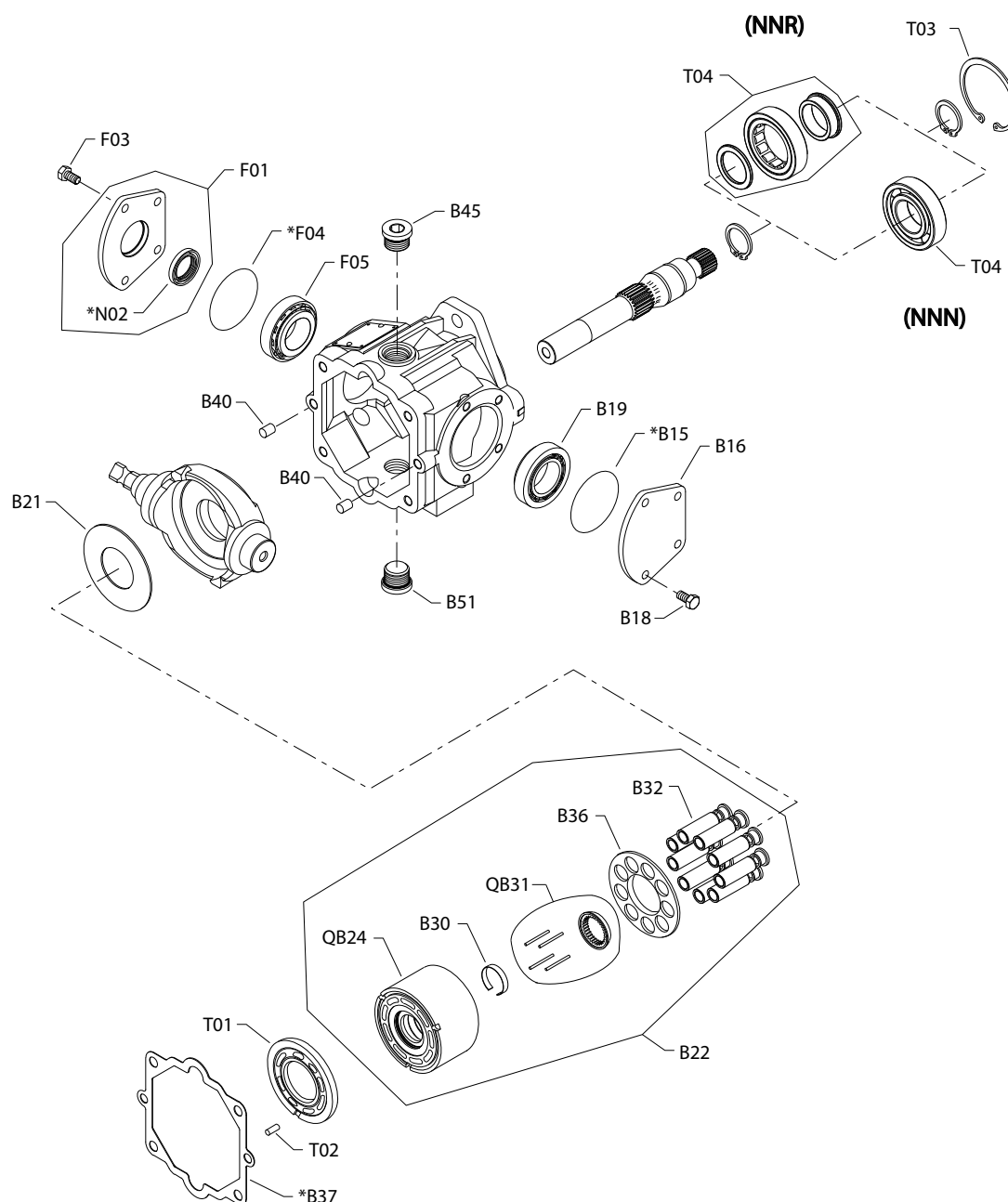
**Fixed displacement**

**Notes**

## Variable displacement

### S40 MMV common parts and special hardware

#### Parts configuration



Swashplate and covers shown controlled on the right.

\* Included in overhaul seal kit Q210



## Variable displacement

### Common parts

Item	Date Begin	Date End	Part Number	Part Name	Qty. per Model/Kit
B15	95-42		9004300-1460	O-ring	1
B16	95-42		4250027	Trunnion cover	1
B18	95-42		378083 (9007210-0804)	Screw	4
B19	95-42		4800470	Bearing kit	1
B21	95-42		4350148	Thrust plate	1
B22	95-42		4440004	Cylinder block kit	1
B30	95-42		4350048	Holddown pin retainer	1
B32	95-42		4440003	Piston assembly	9
B36	95-42		4350185	Slipper retainer	1
B37	95-42		4350145	End cap gasket	1
B40	95-42		5000529	Pin ( <a href="#">SB-1998-092</a> on page 65)	2
B45	95-42		664524 (9005110-9000)	Plug assembly	1
B51	95-42		664524 (9005110-9000)	Plug assembly	1
F01	95-42		4350732	Trunnion cover assembly	1
F03	95-42		378083 (9007210-0804)	Screw	4
F04	95-42		9004300-1460	O-ring	1
F05	95-42		4800470	Bearing kit	1
N02	95-42		5000604	Lip seal ( <a href="#">SB-2000-026A</a> on page 68)	1
QB24	95-42		11131906	Cylinder block assembly	1
QB31	17-12		11178525	SVC kit ( <a href="#">SB-2017-012</a> on page 72)	1
T01	95-42		4350754	Valve plate ( <a href="#">SB-1999-058</a> on page 67)	1
T02	95-42		9004700-1910	Slotted pin	1

### Special hardware

#### Order code: NNN

T03	95-42		9006200-0281	Retaining ring	1
T04	95-42		5000731	Ball bearing	1

#### Order code: NNP

T03	95-42		9006200-0281	Retaining ring	1
T04	95-42		5000420	Roller bearing ( <a href="#">SB-1998-008</a> on page 64)	1

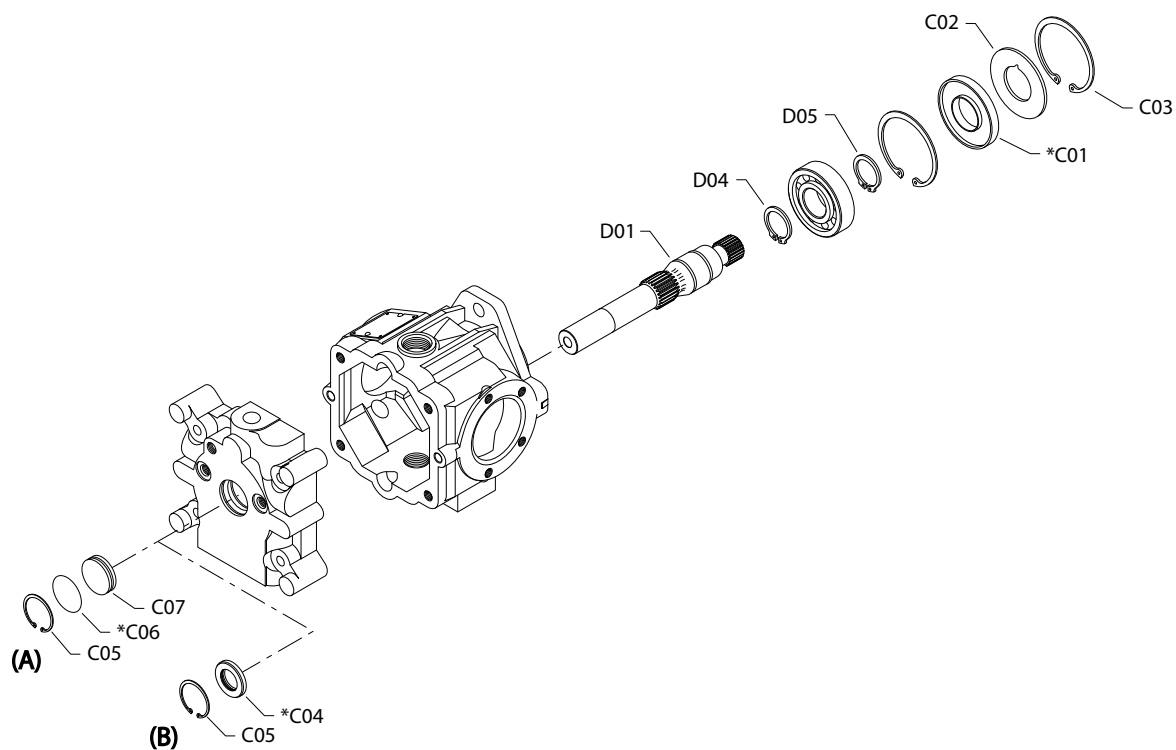
#### Order code: NNR

T03	95-42		9006200-0281	Retaining ring	1
T04	95-42		357616	Roller bearing ( <a href="#">SB-1998-008</a> on page 64)	1

## Variable displacement

### S40 MMV shaft and shaft seal

#### Parts configuration



\* Included in overhaul seal kit Q210

## Variable displacement

### Shaft seal

Order code: A

Item	Date Begin	Date End	Part Number	Part Name	Qty. per Model/Kit
C01	95-42		5000689	Lip seal	1
C02	95-42		11083729	Support washer	1
C03	95-42		9006200-0281	Retaining ring	1
C05	95-42		9006200-0156	Retaining ring	1
C06	95-42		9004100-0280	O-ring	1
C07	95-42		4350096	End cap plug	1

Order code: B

C01	95-42	08-33	5000689	Lip seal	1
C02	95-42	08-33	11083729	Support washer	1
C03	95-42	08-33	9006200-0281	Retaining ring	1
C04	95-42	08-33	5000465	Lip seal	1
C05	95-42	08-33	9006200-0156	Retaining ring	1

### Shaft

Order code: A

D01	95-42		4350393	Shaft, 13-tooth spline	1
D04	95-42		9006300-0137	Retaining ring	1
D05	95-42		9006300-0137	Retaining ring	1

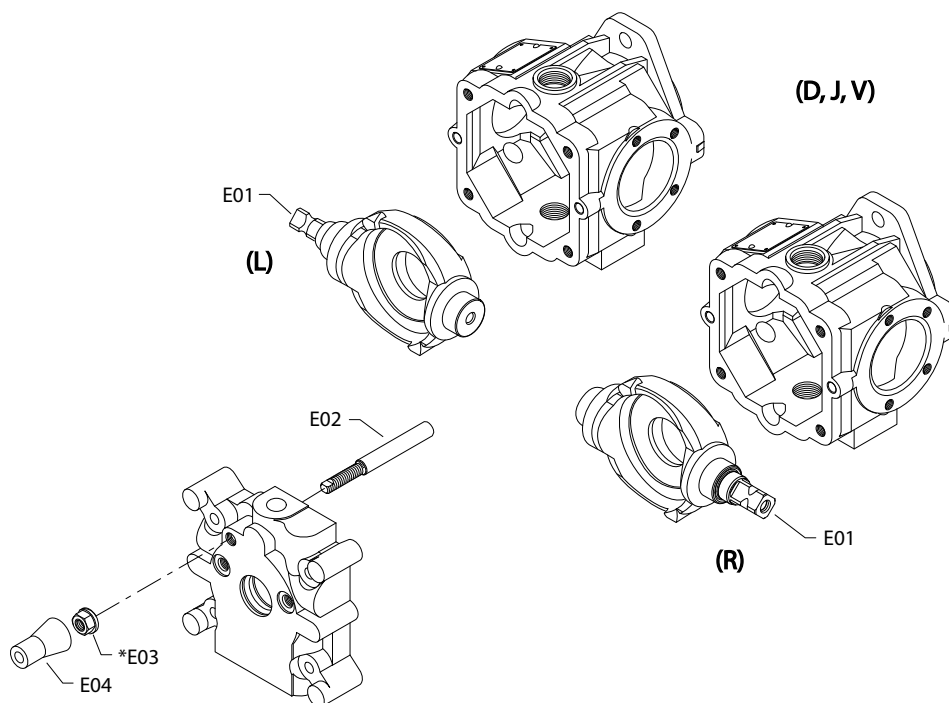
Order code: T

D01	96-26	12-39	4440053	Shaft, 18 t. spline helical, 13 t. auxiliary drive	1
D04	96-26	12-39	5000522	Retaining ring	1

## Variable displacement

### S40 MMV swashplate, displacement, control features

#### Parts configuration



\* Included in overhaul seal kit Q210

## Variable displacement

### Swashplate/minimum displacement

Order code: D

Item	Date Begin	Date End	Part Number	Part Name	Qty. per Model/Kit
E01	95-42		11166719	Swashplate	1
E02	95-42		4350092	Swashplate stop, set at 6°	1
E03	95-42		076042 (9003509-0012)	Seal nut, M12	1
E04	95-42		750679	Plastic cap	1

Order code: U

E01	96-24	15-37	4440032	Swashplate, 9.5° stop	
-----	-------	-------	---------	-----------------------	--

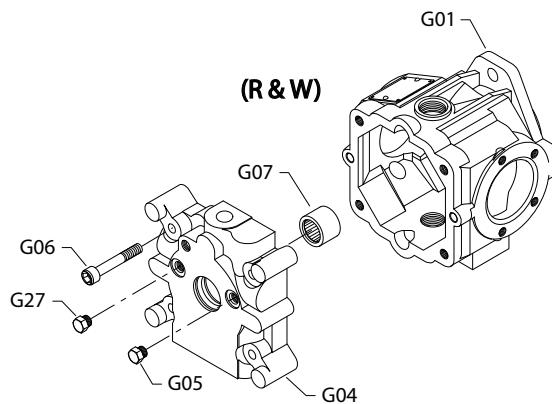
### Control features

L	Swashplate control shaft on left side
R	Swashplate control shaft on right side

**Variable displacement**

**MMV044D housing/end cap**

*Parts configuration*



\* Included in overhaul seal kit Q210

## Variable displacement

Order code: R

Item	Date Begin	Date End	Part Number	Part Name	Qty. per Model/Kit
G01	95-42		4350350	Variable motor housing	1
G04	95-42		11202747	End cap	1
G05	95-42		046151 (9005100-5600)	Plug assembly	1
G06	95-42		654053 (9007314-1012)	Screw, M10 x 55	4
G07	95-42		9001465-0015	Needle bearing	1
G27	95-42		046151 (9005100-5600)	Plug assembly	1

Order code: W

G01	95-42	08-33	4350350	Variable motor housing	1
G04	95-42	08-33	11202747	End cap	1
G05	95-42	08-33	046151 (9005100-5600)	Plug assembly	1
G06	95-42	08-33	654053 (9007314-1012)	Screw, M10 x 55	4
G07	95-42	08-33	9001465-0015	Needle bearing	1
G27	95-42	08-33	046151 (9005100-5600)	Plug assembly	1

## MMV044D seal kit

Item	Date Begin	Date End	Part Number	Part Name	Qty. per Model/Kit
Q210	95-42		4510148	Overhaul seal kit, MMV035/44D	1
B15	95-42		9004300-1460	O-ring, 2.612 x .099, nitrile, 70D	1
B37	95-42		4350145	End cap gasket	1
C01	95-42		5000689	Lip seal	1
C04	95-42		5000465	Lip seal	1
C06	95-42		9004100-0280	O-ring, 1.364 x .070, nitrile, 70D	1
E03	95-42		076042 (9003509-0012)	Seal nut, M12	1
F04	95-42		9004300-1460	O-ring, 2.612 x .099, nitrile, 70D	1
G08A	97-21		085043 (9004201-3700)	O-ring	2
N02	95-42		5000604	Lip seal ( <a href="#">SB-2000-026A</a> on page 68)	1

## Service bulletin

**SB-1998-008**

### Products affected

Series 40: M35 and M44 motors

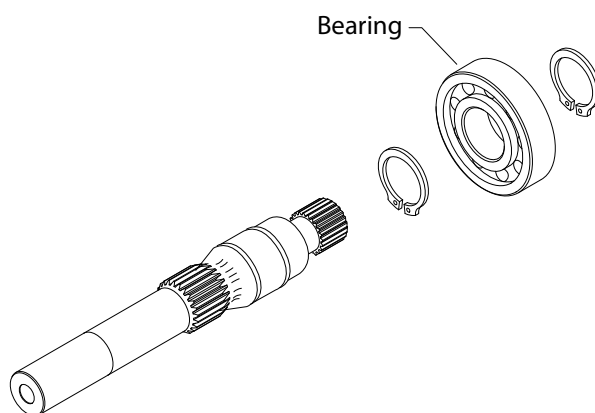
### Subject

Shaft bearing in high capacity special hardware option

### Description

As a product improvement, Danfoss changed the roller bearing Series 40: M35 and M44 motors equipped with the high capacity special hardware option. This change allows for motors equipped with this option to withstand a greater thrust load.

The new bearing is interchangeable with the old bearing



### Models affected

M35 motors		M44 motors
4353025	4353049	4443026
4353033	4353052	4443028
4353034	4353053	4443029
4353042	4353055	4443032
4353043	4354027	

### Serial numbers

This change became effective at serial number A-98-06-xxxxx.

### Part numbers affected

Item description	Old part number	New part number
Roller bearing	5000461	357616

### Parts disposition

Interchangeable



## Service bulletin

**SB-1998-092**

### Products affected

Series 40: M35 and M44 variable motors, variable pumps, tandem pumps

### Subject

Housing to end cap dowel pin change

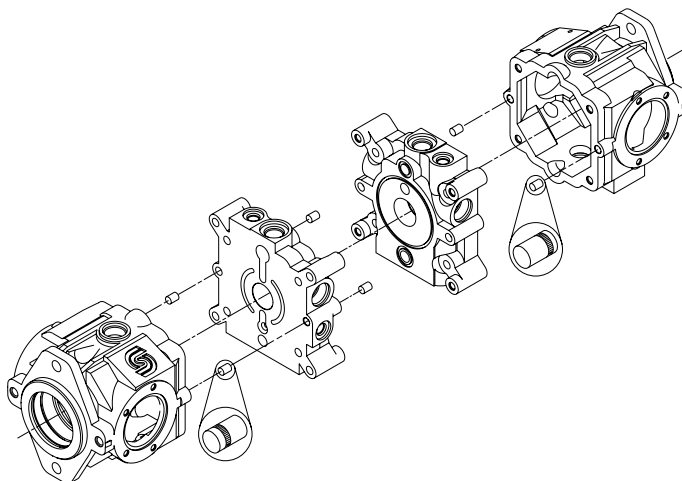
### Description

Danfoss introduced a design improvement to the dowel pins that align the variable housing and end cap for the Series 40: M35 and M44 variable motors, variable pumps, and tandem variable pumps.

Each variable motor and variable pump assembly uses two dowel pins to align the end cap to the pump housing. The assembly is designed so the dowel pin is installed in the variable housing before the end cap is positioned on the assembly. The tandem variable pump uses the same dowel pin to align the two halves of the tandem pump assembly. Previously, a slip fit existed between the holes in the variable housing and the pin.

The design of the dowel pin changed to incorporate a knurled section on the pin. The fit between the dowel pin and the pilot hole in the variable housing changed to a slight interference fit. This change improves the serviceability of the motor and pump assembly, by reducing the potential for the pins to dislodge from the housing when servicing the product.

To help identify this change, we have a new dowel pin part number. The new pin is completely interchangeable with the old pin. The old pin remains available as a service item, since it is in a variety of Danfoss applications.



### Models affected

M35-4xxx, 4354xxx and 4444xxx variable displacement motors

M35-2xxx, 4352xxx and 4442xxx variable displacement pumps

M91-35xxx, 4355xxx and 4445xxx tandem pumps

### Serial numbers

This change became effective at serial number A-99-10-xxxxx

**Service bulletin****Part numbers affected**

Old dowel pin	New dowel pin
5000539	9004800-3708

**Parts disposition**

- Interchangeable
- Use parts in stock

## Service bulletin

### SB-1999-058

#### Products affected

Series 40: M25 fixed and U-style, M35, M44, and M46 fixed and variable motors

#### Subject

Valve plate change

#### Description

As a product improvement, Danfoss modified the finish on Series 40 motor valve plates. This change improves the plate's ability to develop and retain a suitable oil film, especially at initial start-up.

New part numbers for all Series 40 motor valve plates identify this change. This is an interchangeable change. The old part numbers are obsolete. They are no longer available as a service part.

#### Models affected

Series 40: M25 fixed motors and M25 motor sections within M25 U-style transmissions

Series 40: M35 and M44 fixed motors

Series 40: M46 fixed and variable motors

#### Serial numbers

This change became effective at serial number A-99-34-xxxxx for all Series 40 M25 fixed motors and M25 motor sections of U-style transmissions.

This change became effective at serial number K-00-18-xxxxx for all Series 40 M35 and M44 fixed motors and all M46 fixed and variable motors

#### Part numbers affected

Frame size	Description	Old number	New number
M25	Motor valve plate	4250073	4250143
M35 and M44	Square key	4350159	4350754
M46	Motor valve plate	4460119	4461105

#### Parts disposition

Interchangeable

## Service bulletin

SB-2000-026A

### Products affected

Series 40: M25, M35, and M44 pumps and variable motors

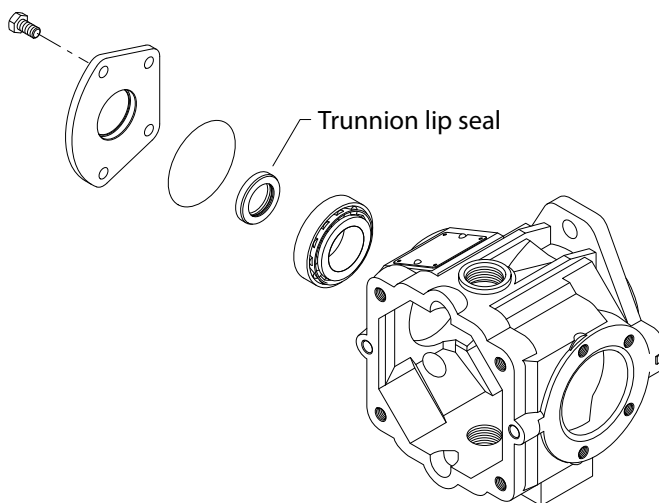
### Subject

Trunnion seal change

### Description

As a product improvement, Danfoss made a design change to the trunnion seal on Series 40: M25, M35, and M44 pumps and variable motors. The dust lip is extended, allowing more installation concentric tolerance, and more forgiving during installation. Now there will be fewer low-hour trunnion seal failures caused by improper installation.

The new seal is interchangeable with the old seal. Danfoss recommends that the seal be replaced when servicing these units. The old seal (5000465) remains available as it is in other Danfoss product lines.



### Models affected

Series 40: M25, M35 and M44 pumps and variable motors

### Serial numbers

This change became effective at serial number K-00-46-xxxxx

### Part numbers affected

Description	Old number	New number
Trunnion seal	5000465	5000604

### Parts disposition

Interchangeable

## Service bulletin

**SB-2002-021**

### Products affected

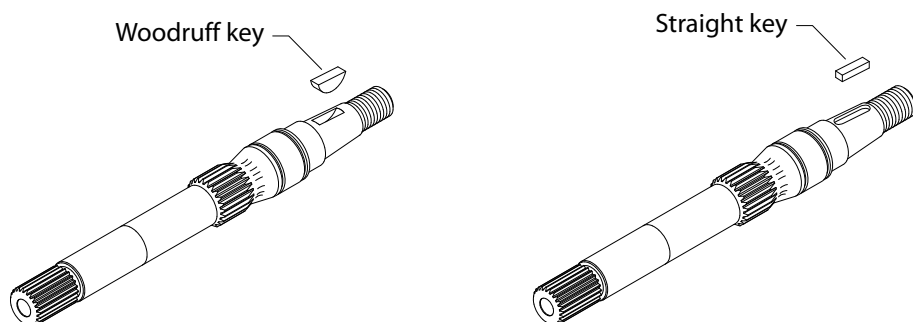
Series 40: M25, M35, M44, M46, and LV pumps and motors

### Subject

Change from woodruff key to straight key on tapered shaft

### Description

Danfoss uses a straight key rather than a woodruff key in tapered shafts on all Series 40 pumps and motors. Tapered shafts requiring a woodruff key are obsolete. The woodruff key, however, remains available for service requirements. Customers requiring a replacement shaft need the straight key.



### Models affected

Series 40: M25, M35, M44, M46, and LV pumps and motors using tapered shafts

### Serial numbers

This change became effective during the 2002 build year.

### Part numbers affected

Old part number	New part number	Description
9003310-2514	-	Key-woodruff, .248 x .875
-	5000664	Key-square, .250 x .750
4250012	4250164	Shaft, tapered
4254500	4254568	Shaft, tapered
4350390	4350805	Shaft, tapered
4350432	4350791	Shaft, tapered
4460309	4461308	Shaft, tapered/9t. aux.
4461290	4461302	Shaft, tapered/13t. aux.
4460577	4461309	Shaft, tapered
4460804	4461306	Shaft, 13-tooth/tapered aux.
4460772	4461307	Shaft, tapered

## **Service bulletin**

### **Parts disposition**

- Interchangeable if shaft and key are both replaced
- Use parts in stock
- Scrap new parts and apply for credit

## Service bulletin

**SB-2005-015**

### Products affected

Series 40 fixed motors with loop flushing option (M25, M35, M44)

### Subject

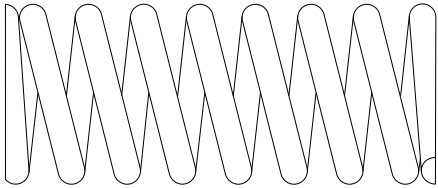
Loop flush return spring

### Description

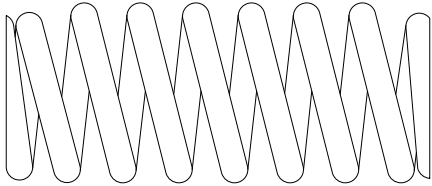
As a product improvement aimed at reducing assembly risk and increasing quality, Danfoss is making the following change to series 40 fixed motors with loop flushing option (M25, M35, M44): Spring-helical compression (Old P/N 4800225) will change to spring-helical compression (New P/N 4800887). This change will be visually detectable as that the ends of the new spring will be tapered smaller allowing it to snap onto the spring guide (P/N 512257) holding the two parts together.

All parts are completely interchangeable in fit and function.

From: 4800225



To: 4800887



### Models affected

All series 40 fixed motors with loop flushing option (M25, M35, M44)

### Serial numbers

Change will go into effect starting: K-06-03-XXXXX

### Part numbers affected

Description	Old number	New number
Spring	4800225	4800887

### Parts disposition

Interchangeable

## Service bulletin

**SB-2017-012**

### Products affected

Series 40 M35 and M44 pumps and motors

### Subject

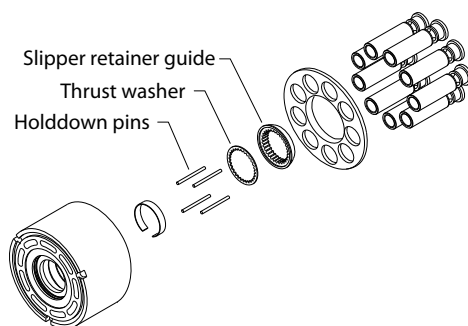
Cylinder block kit design change

### Description

A design change has been made to the cylinder block kit of Series 40 M35 and M44 pumps and motors. The change removes the thrust washer from the cylinder block kit assembly. A kit is available for service and repair of the cylinder block.

The internal parts (pin and retainer guide) of the cylinder kit are not interchangeable.

With the removal of the thrust washer from the cylinder block kit assembly, the new service kit contains slipper hold down pins and retainer guide.



### Models affected

Series 40 M35 and M44 single and tandem pumps, fixed and variable motors

Cylinder block kits 11054783, 4350291, 4350422, 4350773, 4440004, 4440023, 4440114

### Serial numbers

This change became effective at A-17-12-xxxxx (March 17, 2017)

### Part numbers affected

Description	Old number	New number
Guide slipper retainer	4350186	11178522
Pin straight	9004875-0109	11178524
Washer thrust	4350187	-
SVC kit: MMF035/44D (includes pins and slipper retainer)	-	11178525

### Parts disposition

Non-interchangeable (internal parts in kits)



**Products we offer:**

- DCV directional control valves
- Electric converters
- Electric machines
- Electric motors
- Hydrostatic motors
- Hydrostatic pumps
- Orbital motors
- PLUS+1® controllers
- PLUS+1® displays
- PLUS+1® joysticks and pedals
- PLUS+1® operator interfaces
- PLUS+1® sensors
- PLUS+1® software
- PLUS+1® software services, support and training
- Position controls and sensors
- PVG proportional valves
- Steering components and systems
- Telematics

**Danfoss Power Solutions** is a global manufacturer and supplier of high-quality hydraulic and electric components. We specialize in providing state-of-the-art technology and solutions that excel in the harsh operating conditions of the mobile off-highway market as well as the marine sector. Building on our extensive applications expertise, we work closely with you to ensure exceptional performance for a broad range of applications. We help you and other customers around the world speed up system development, reduce costs and bring vehicles and vessels to market faster.

Danfoss Power Solutions – your strongest partner in mobile hydraulics and mobile electrification.

**Go to [www.danfoss.com](http://www.danfoss.com) for further product information.**

We offer you expert worldwide support for ensuring the best possible solutions for outstanding performance. And with an extensive network of Global Service Partners, we also provide you with comprehensive global service for all of our components.

**Hydro-Gear**

[www.hydro-gear.com](http://www.hydro-gear.com)

**Daikin-Sauer-Danfoss**

[www.daikin-sauer-danfoss.com](http://www.daikin-sauer-danfoss.com)

Local address:

**Danfoss  
Power Solutions (US) Company**  
2800 East 13th Street  
Ames, IA 50010, USA  
Phone: +1 515 239 6000

**Danfoss  
Power Solutions GmbH & Co. OHG**  
Krokamp 35  
D-24539 Neumünster, Germany  
Phone: +49 4321 871 0

**Danfoss  
Power Solutions ApS**  
Nordborgvej 81  
DK-6430 Nordborg, Denmark  
Phone: +45 7488 2222

**Danfoss  
Power Solutions Trading  
(Shanghai) Co., Ltd.**  
Building #22, No. 1000 Jin Hai Rd  
Jin Qiao, Pudong New District  
Shanghai, China 201206  
Phone: +86 21 3418 5200

Danfoss can accept no responsibility for possible errors in catalogues, brochures and other printed material. Danfoss reserves the right to alter its products without notice. This also applies to products already on order provided that such alterations can be made without subsequent changes being necessary in specifications already agreed. All trademarks in this material are property of the respective companies. Danfoss and the Danfoss logotype are trademarks of Danfoss A/S. All rights reserved.