

<b>Table of Contents</b>	<b>Page</b>
Track Frame	6
Chassis	7
Diesel Tank	8
Hydraulic Tank	9
Feeder Frame	10
Feeder Hopper	12
Feeder Box Chute	13
Feeder Conveyor	14
12FT Tipping Grid	16
14FT Tipping Grid	18
Screen and Walkway	20
Screenbox Assembly	22
Top Deck Chute	24
Main Conveyor Support	25
Main Conveyor	26
Tail Conveyor	28
Tail Conveyor Support Frame	30
Side Conveyors	32
Vibrating Grid	34
Vibrating Grid Box Assembly	36
Caterpillar Power Unit	38
Caterpillar Engine	40

---

## Spare Parts

---

<b>Table of Contents</b>	<b>Page</b>
Deutz Power Unit	42
Deutz Engine	44
Shredder Unit	46

**Hydraulic Diagrams**

<b>Table of Contents</b>	<b>Page</b>
Standard Track Machine	48
Vibrating Grid Option	49
Shredder Option	50
Extra Coupling Conveyor	51
Standard Hose Kit	52
Grease Hose Kit	56
Vibrating Grid Hose Kit	57
Shredder Hose Kit	59
Extra Coupling Hose Kit	60
Electric Components	61

### Spare Parts

This manual sets out details of available spares for the Fintec Screening Machine. The parts list takes the form of a number of 'exploded' illustrations of the various machine assemblies. Components illustrated have reference numbers, which can be cross-referenced with the corresponding Parts list.

This list includes:

- A Illustration Reference Number
- B Actual Part Number
- C Part Description
- D Quantity of Parts per Unit Assembly

Ordering Procedure:

To ensure correct delivery of your replacement part when ordering please quote:

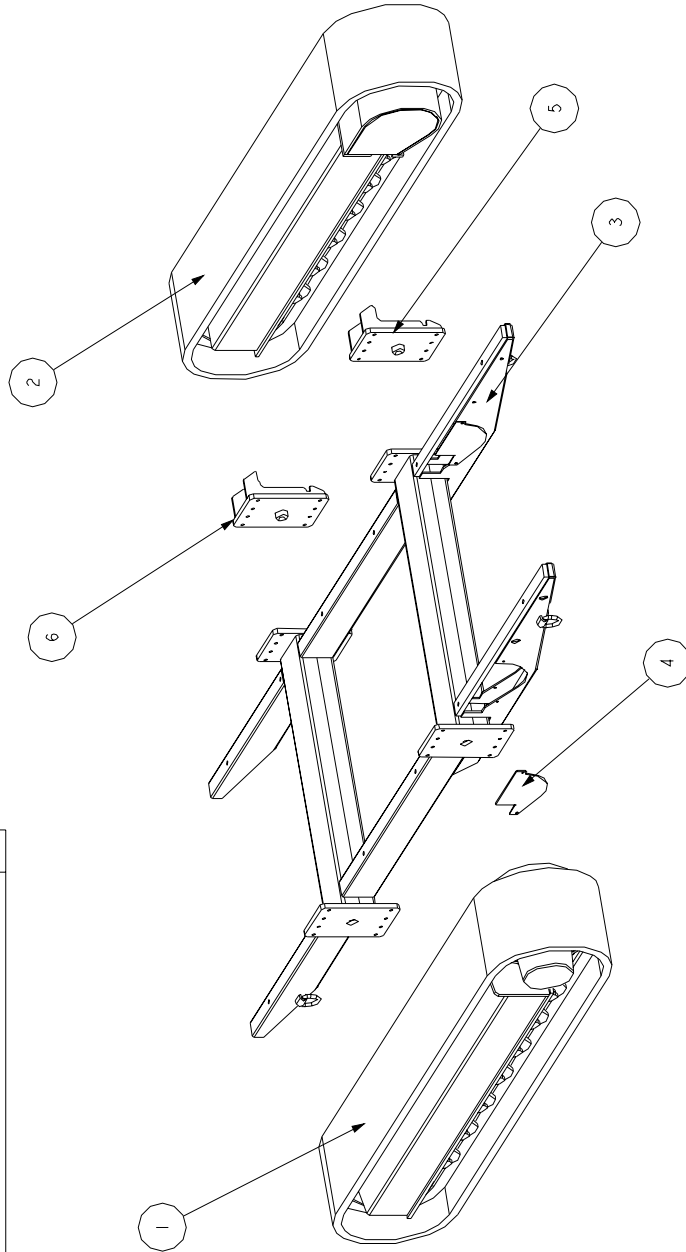
- A Machine, Model and Serial Number
- B Year of Manufacture
- C Actual Part Number
- D Part Description
- E Illustration Reference Number and Page Number
- F Quantity Required

This information will enable us to supply the part with a minimum of delay.

---

## Spare Parts

PARTS LIST			
No.	PART No.	DESCRIPTION	QTY
1	18-10-2940	TRACK LH	1
2	18-11-2940	TRACK RH	1
3	540-75-02	TRACK FRAME	1
4	540-75-03	TRACK MOTOR COVER PLATE	2
5	540-75-07	TRACK BOLT ON ASSY	2
6	540-75-08	BOLT ON TRACK PLATE	2



SECTION:	TRACK COMPLETE
FILE NAME:	540_75_000_P8
	Rev: A

1

10-16-1012

DOUBLE BANK AUX CV

1

2

10-16-1013

TRIPLE BANK CONTROL VALVE

1

3

10-28-0015

MAIN CONVEYOR SLIDE RAM

1

4

540-05-08

STEP SUPPORT

1

5

540-05-10

CHASSIS

1

6

540-25-46

MAIN CONVEYOR SLIDE SUPPORT

1

7

540-25-47

MAIN CONVEYOR SLIDE SUPPORT

1

8

540-05-03

CHASSIS BACK STEP

1

9

540-05-04

CHASSIS FOOTSTEP

1

PARTS LIST

DESCRIPTION

QTY

The diagram shows an exploded view of a conveyor slide assembly. The main components are labeled with circled numbers 1 through 9. Callout 1 points to a pin at the bottom left. Callout 2 points to a bracket on the right. Callout 3 points to a bracket on the left. Callout 4 points to a long horizontal beam. Callout 5 points to a vertical support. Callout 6 points to a bracket on the left. Callout 7 points to a bracket on the left. Callout 8 points to a bracket on the right. Callout 9 points to a bracket on the right. The assembly is shown in a perspective view, with the main body of the slide in the center and the various brackets and supports around it.

SECTION: CHASSIS COMPLETE

FILE NAME: 540-05-10-00-P8

REV: A

Page 7

PARTS LIST			
No.	PART No.	DESCRIPTION	QTY
1	10-22-4008	FILLER CAP ASSEMBLY	1
2	10-23-5008	LEVEL GAUGE	1
3	12-09-0040	RUBBER MTG	4
4	540-05-11	DIESEL TANK	1
5	540-05-12	DIESEL TANK FRAME	1

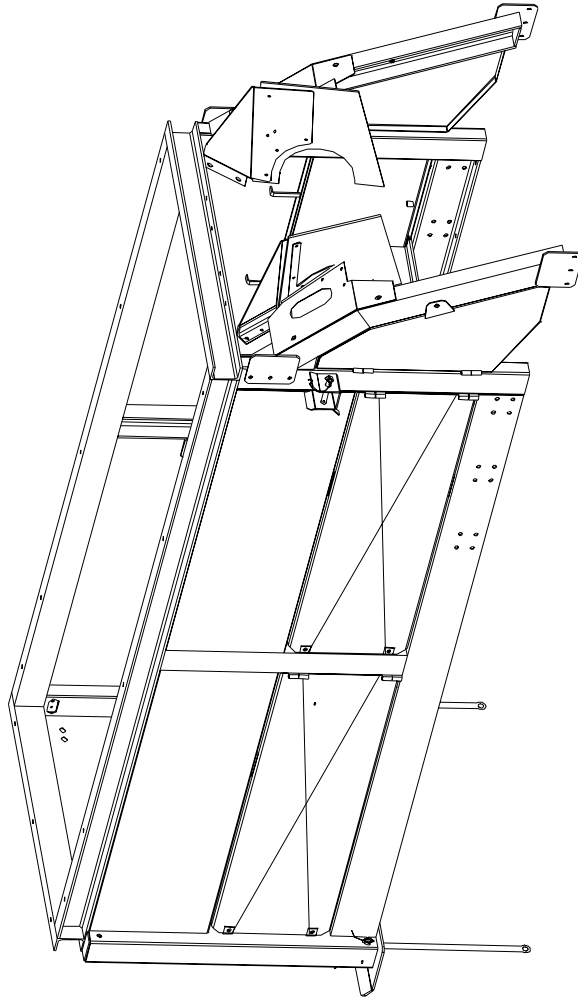
SECTION:	DIESEL TANK COMPLETE	
FILE NAME:	540-05-11-00-P8	Rev: A



PARTS LIST	
No.	PART No.
1	10-21-0006
2	10-21-0008
3	10-21-0009
4	10-22-4006
5	10-23-5007
6	12-85-0001
7	540-15-10
8	540-15-04

SECTION: HYDRAULIC TANK	
FILE NAME: 540_15_04_00_PB	REV: A

PARTS LIST		
No.	PART No.	DESCRIPTION
1	10-28-0007	LEG RAM
2	12-02-0015	S146 LINC PIN AND CHAIN
3	36-25-0175	25.4X175 PIN
4	540-45-31	FEEDER FRAME
5	540-45-32	FEEDER CONVEYOR REAR LH LEG
6	540-45-33	FEEDER CONVEYOR REAR RH LEG
7	540-45-34	FEEDER CONVEYOR FRONT LH LEG
8	540-45-35	FEEDER CONVEYOR FRONT RH LEG
9	540-45-36	FEEDER CHASSIS BRACE
10	540-45-37	FEEDER CHASSIS BRACE
11	540-45-42	FEEDER ACCESS DOOR
12	540-45-43	FEEDER ACCESS DOOR
13	540-45-44	FEEDER ACCESS DOOR
14	540-45-45	FEEDER ACCESS DOOR
15	540-45-56	OUTLET GUARD
16	540-45-58	FEEDER EXT PLATE
17	540-45-59	HOPPER OUTLET RUBBER
18	540-45-60	FEEDER EXT PLATE CLAMP
19	540-45-61	OUTLET GUARD
20	540-45-62	HOPPER OUTLET EXTENSION PLATE
21	540-45-66	RUBBER
22	540-45-67	CLAMP PLATE
23	540-45-07	FEEDER EXCESS DOOR
24	540-45-14	FEEDER JACK LEG
25	540-45-16	COVER PLATE
26	570-45-29	TRACK LEAD MTG PLATE

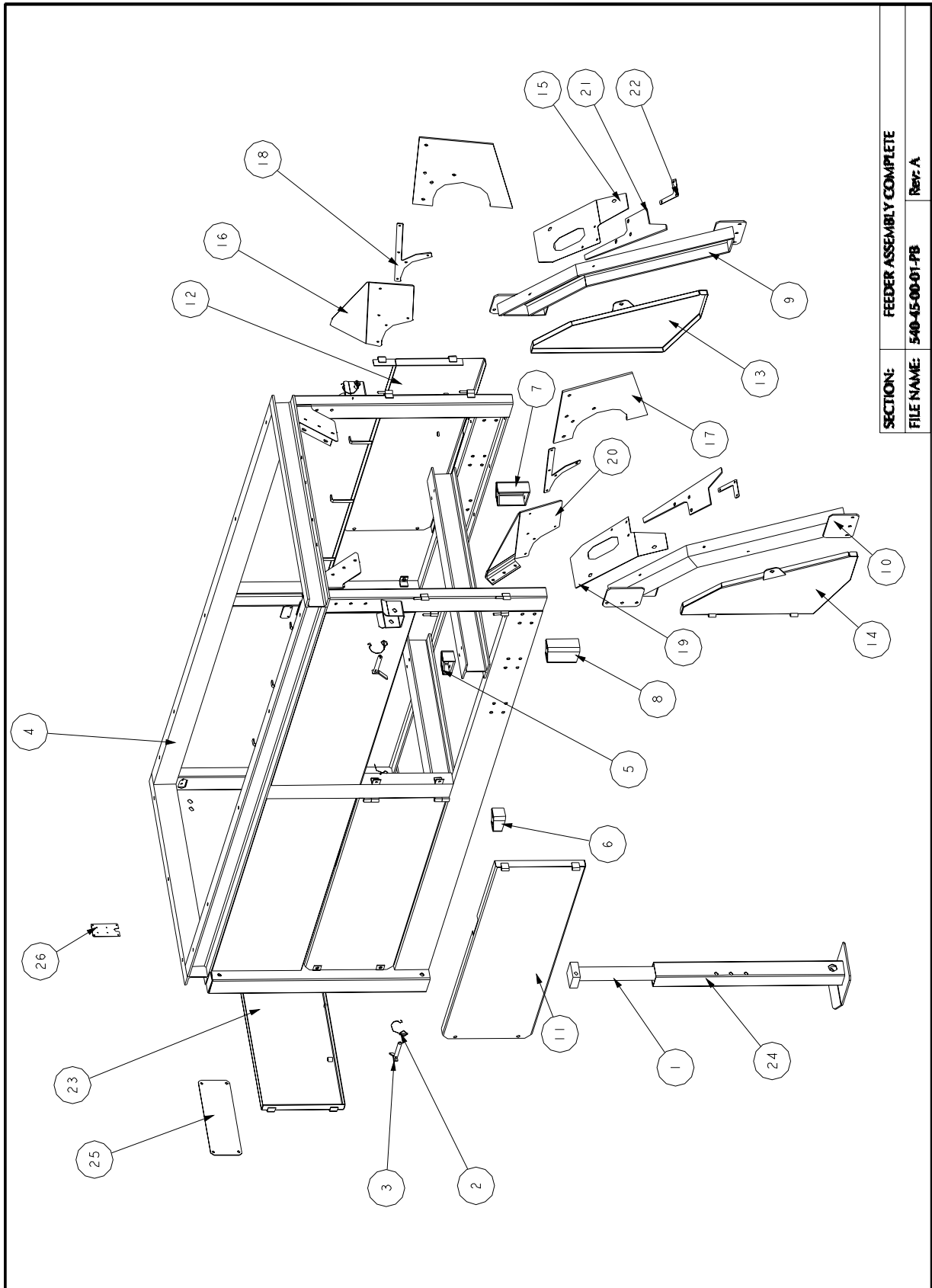


SECTION: FEEDER ASSEMBLY COMPLETE

FILE NAME: 540-45-00-01-PB

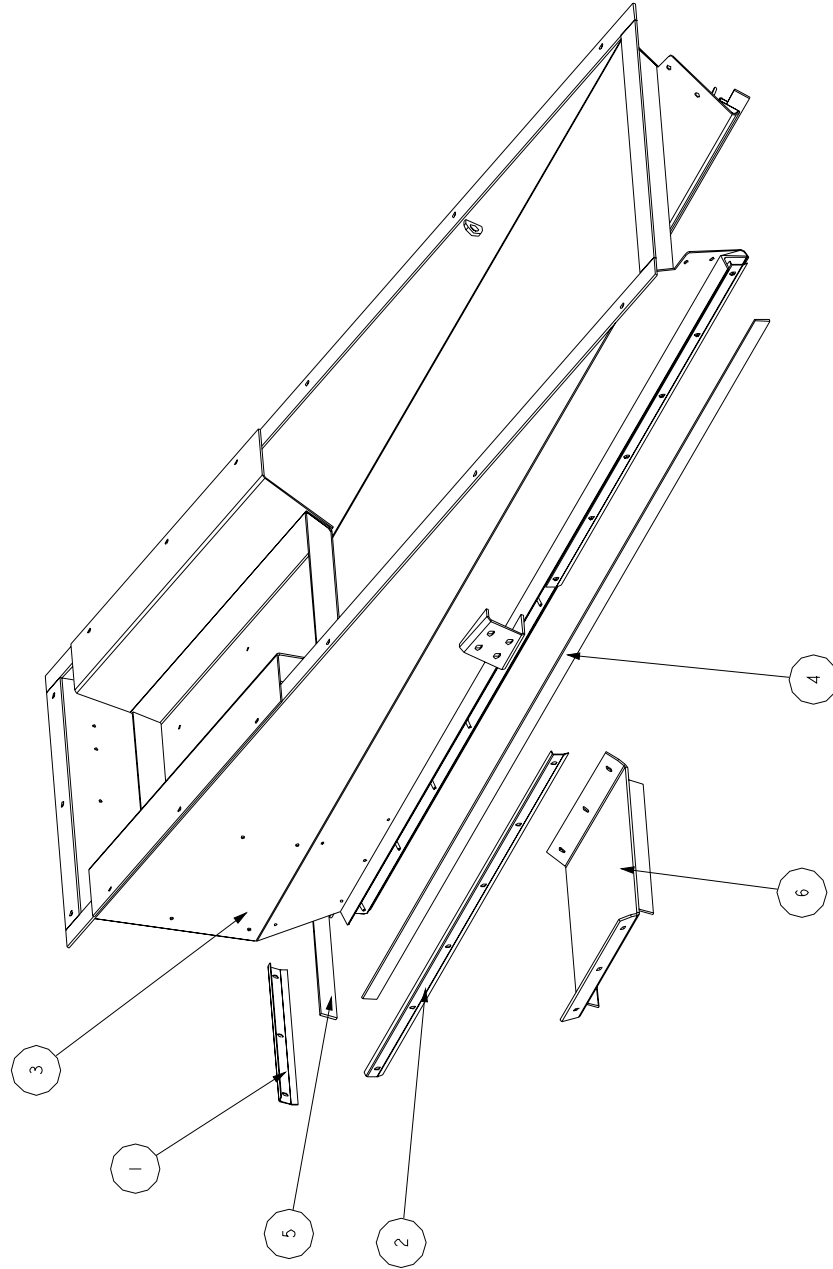
Rev: A

# Spare Parts



SECTION:	FEEDER ASSEMBLY COMPLETE
FILE NAME:	540-45-00-01-P8 Rev: A

PARTS LIST			
No.	PART No.	DESCRIPTION	QTY
1	000-45-04	CLAMP PLATE	1
2	000-45-05	CLAMP PLATE	4
3	540-45-38	BOLT IN HOPPER	1
4	540-45-40	FEEDER SIDE SKIRT RUBBER	2
5	540-45-41	FEEDER SKIRT RUBBER	1
6	540-45-50	CHASSIS IMPACT BED	1



SECTION: BOLT IN FEED HOPPER

FILE NAME: 540-45-38-01-98

Rev: A

PARTS LIST

No.	PART No.	DESCRIPTION	QTY
1	540-45-51	CRUSHER FEEDER BOX	1
2	540-45-52	WING PLATE PIVOT BAR	1
3	540-45-53	CRUSHER FEEDER DOOR	1
4	540-45-54	CRUSHER FEEDBOX LINER	1
5	540-45-55	CRUSHER FEEDBOX LINER	1
6	540-45-57	PLATE	1

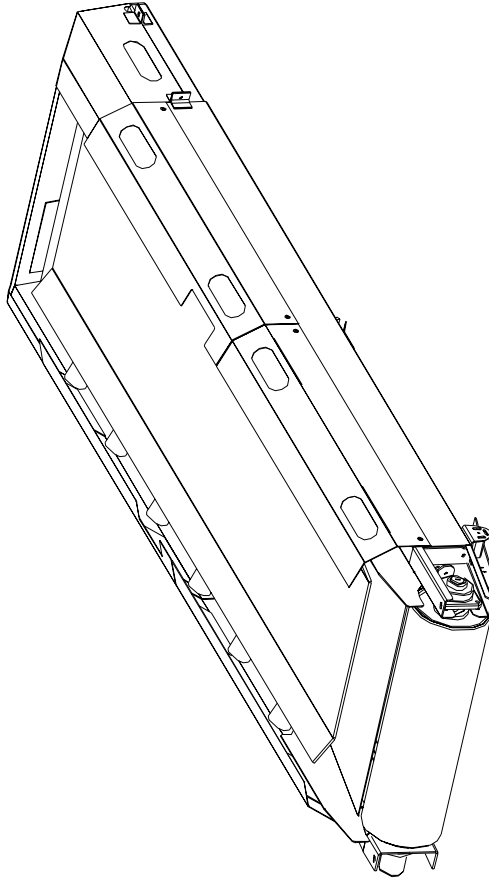
Exploded view diagram of a crusher feeder box assembly. The diagram shows the main feeder box (1) with a pivot bar (2) attached to its top. A feeder door (3) is shown below the box. Two liners (4 and 5) are shown to the left of the door. A plate (6) is shown below the liners. Callouts 1 through 6 point to their respective parts.

SECTION: FEEDER BOX CHUTE

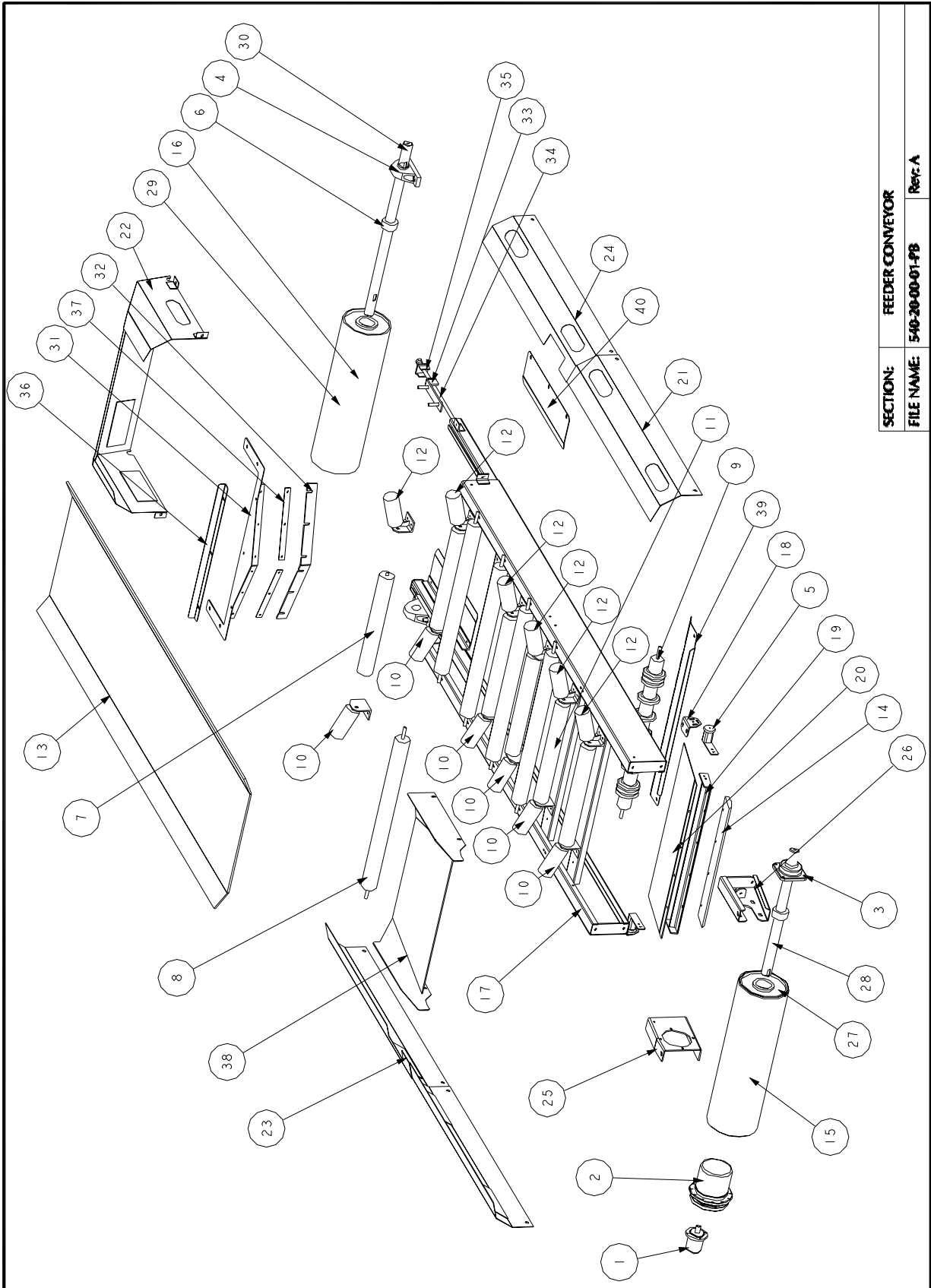
FILE NAME: 540-45-51-00-P8

Rev: A

PARTS LIST			SECTION: FEEDER CONVEYOR		Rev: A
No.	PART No.	DESCRIPTION	QTY	FILE NAME	540-20-00-01-PB
1	10-25-01-25	HYDRAULIC MOTOR	1		
2	10-26-00-95	GEARBOX	1		
3	11-20-02-13	BEARING	1		
4	11-25-02-13	BEARING	2		
5	12-12-00-27	ROSTA TENSIONER	2		
6	13-04-76-65	TAPERLOCK	4		
7	19-01-07-80	CENTRE ROLLER	6		
8	19-04-11-60	PLAIN RETURN ROLLER 1160 RL	5		
9	19-05-11-60	DISC RETURN ROLLER	1		
10	19-20-02-20	20 DEGREE WING ROLLER LH	6		
11	19-20-10-50	20 DEGREE WING ROLLER RH	6		
12	19-21-02-20	20 DEGREE ROLLER SET FOR 1050 BELT	6		
13	20-01-05-42	FEEDER 1050MM EP500/3PLY	1		
14	20-55-09-30	930 WIDE BELT SCRAPER	1		
15	540-20-04-00	FEED DRIVE DRUM COMPLETE	1		
16	540-20-07-00	FEED TAIL DRUM COMPLETE	1		
17	540-20-15	FEEDER CONVEYOR FRAME	1		
18	540-20-19	SCRAPER MTG	2		
19	540-20-20	SCRAPER MTG	1		
20	540-20-21	SPILLAGE RUBBER	1		
21	540-65-68	FEEDER SIDE GUARD	2		
22	540-65-71	FEEDER BACK GUARD	1		
23	540-65-80	FEEDER SIDE GUARD	1		
24	540-65-81	FEEDER SIDE GUARD	1		
25	540-20-02	GEARBOX MTG BRACKET	1		
26	540-20-03	BEARING MTG BRACKET	1		
27	540-20-04	DRUM	1		
28	540-20-05	SHAFT	1		
29	540-20-07	DRUM	1		
30	540-20-08	SHAFT	1		
31	540-20-09	TAIL DRUM V-SCRAPER	1		
32	540-20-09_003	V-SCRAPER RUBBER	1		
33	540-20-10	BEARING ADJUSTER	2		
34	540-25-11	ADJUSTER BAR	2		
35	540-25-12	ADJUSTER BOLT END CAP	2		
36	540-25-16	V-SCRAPER PLATE	1		
37	540-25-17	V-SCRAPER CLAMP	2		
38	540-65-01	HEAD DRUM GUARD	1		
39	540-65-02	RETURN ROLLER GUARD	1		
40	540-65-17	UNDERSIDE GUARD	2		



# Spare Parts



SECTION:	FEEDER CONVEYOR
FILE NAME:	540-20-00-01-PB
REV:	A

PARTS LIST			QTY
No.	PART No.	DESCRIPTION	
1	10-28-0021	GRID TIPPING RAM	2
2	12-02-0015	SI46 LINC PIN AND CHAIN	2
3	12-10-0100	GRID BUMP STOP	2
4	96-30-0125	30X125 PIN	2
5	540-50-24	GRID TIPPING FRAME	1
6	540-50-25	GRID SUB FRAME	1
7	540-50-26	GRID HOPPER	1
8	540-50-28	GRID SUPPORT LEG	2
9	540-50-09	GRID BUMP STOP PLATE	2
10	540-50-15	GRID BAR	28
11	540-50-17	WING PLATE LH	1
12	540-50-18	WING PLATE RH	1
13	540-50-19	WING PLATE PIVOT BAR	2
14	570-50-04	GRID BAR MTG. FRAME	2
15	570-50-11	GRID BAR PIVOT BAR	2
16	570-50-12	4" FRONT RUNNER	2
17	570-50-13	4" BAR SPACER	20
18	570-50-14	4" BAR SPACER	4

6" OPTION (SPACERS)  
PART NOS: QTY: 13  
540-50-34 QTY: 3  
540-50-35 QTY: 3  
540-50-36 QTY: 4

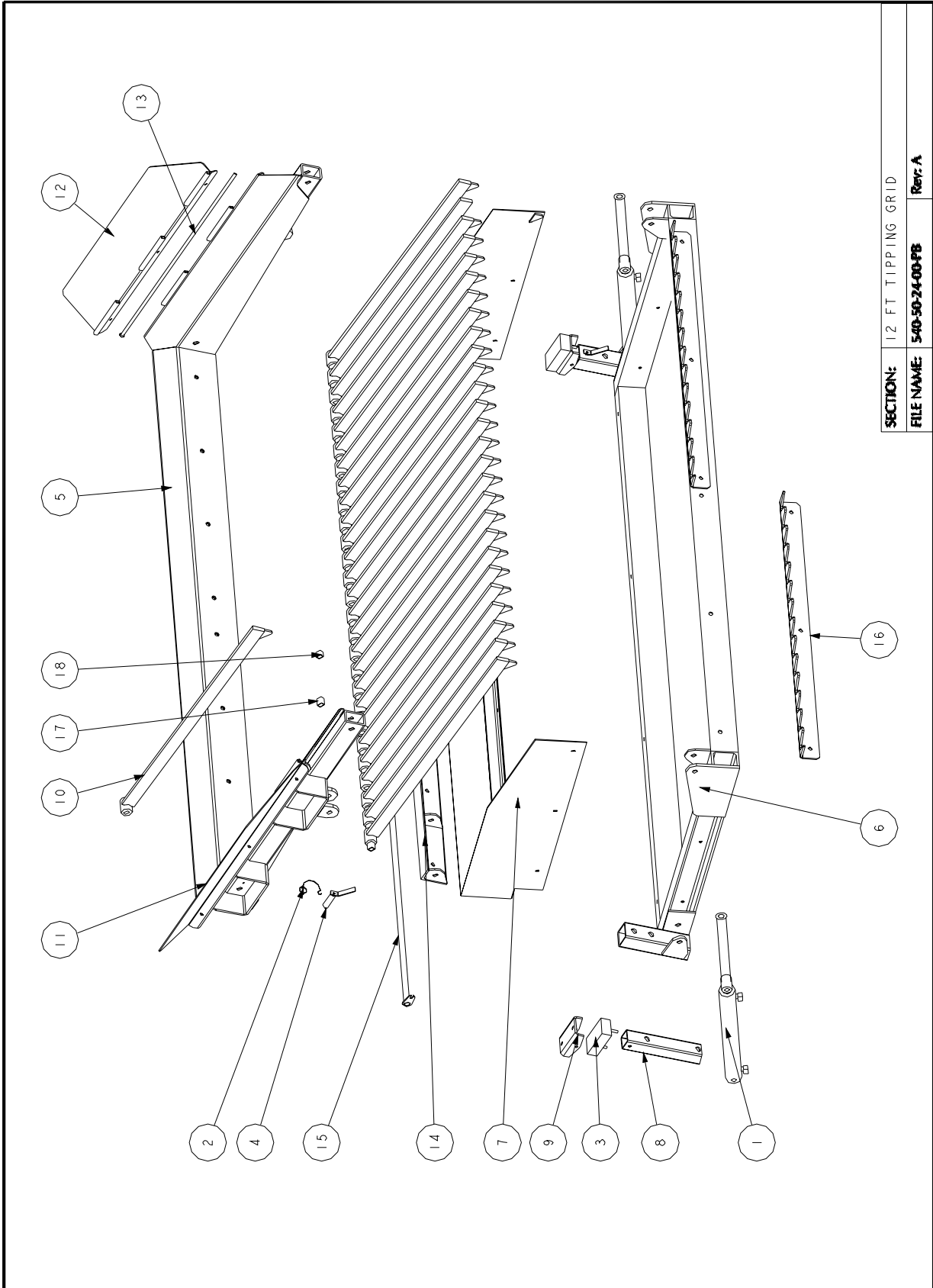
6" OPTION (BARS)  
PART NO: 540-50-15  
QTY: 20

6" OPTION (FRONT RUNNER)  
PART NO: 540-50-27  
QTY: 2

SECTION: 12 FT TIPPING GRID  
FILE NAME: 540-50-24-00-P8  
Rev: A



# Spare Parts



SECTION:	12 FT TIPPING GRID
FILE NAME:	540-50-24-00-P8
REV:	A

PARTS LIST			
No.	PART No.	DESCRIPTION	QTY
1	10-28-0003	GRID RAM	2
2	12-02-0015	5146 LINCH PIN AND CHAIN	2
3	12-10-0100	GRID BUMP STOP	2
4	96-30-0125	30X125 PIN	2
5	540-50-28	GRID SUPPORT LEG	2
6	540-50-29	14' 6 INCH FRONT RUNNER	1
7	540-50-30	14' GRID SUB FRAME	1
8	540-50-31	14' GRID HOPPER	1
9	540-50-33	14' GRID TIPPING FRAME	1
10	540-50-34	6" BAR SPACER	16
11	540-50-35	6" BAR SPACER	6
12	540-50-09	GRID BUMP STOP PLATE	2
13	540-50-15	GRID BAR	56
14	540-50-17	WING PLATE LH	1
15	540-50-18	WING PLATE RH	1
16	540-50-19	WING PLATE PIVOT BAR	2
17	570-50-24	GRID PIVOT BAR	2
18	570-50-25	14' GRID BAR MTG FRAME	2
19	570-50-26	14' 4 INCH FRONT RUNNER	2
20	570-50-13	4" BAR SPACER	25

6" OPTION (SPACERS)  
PART NOS: 540-50-34 QTY: 16  
540-50-35 QTY: 6

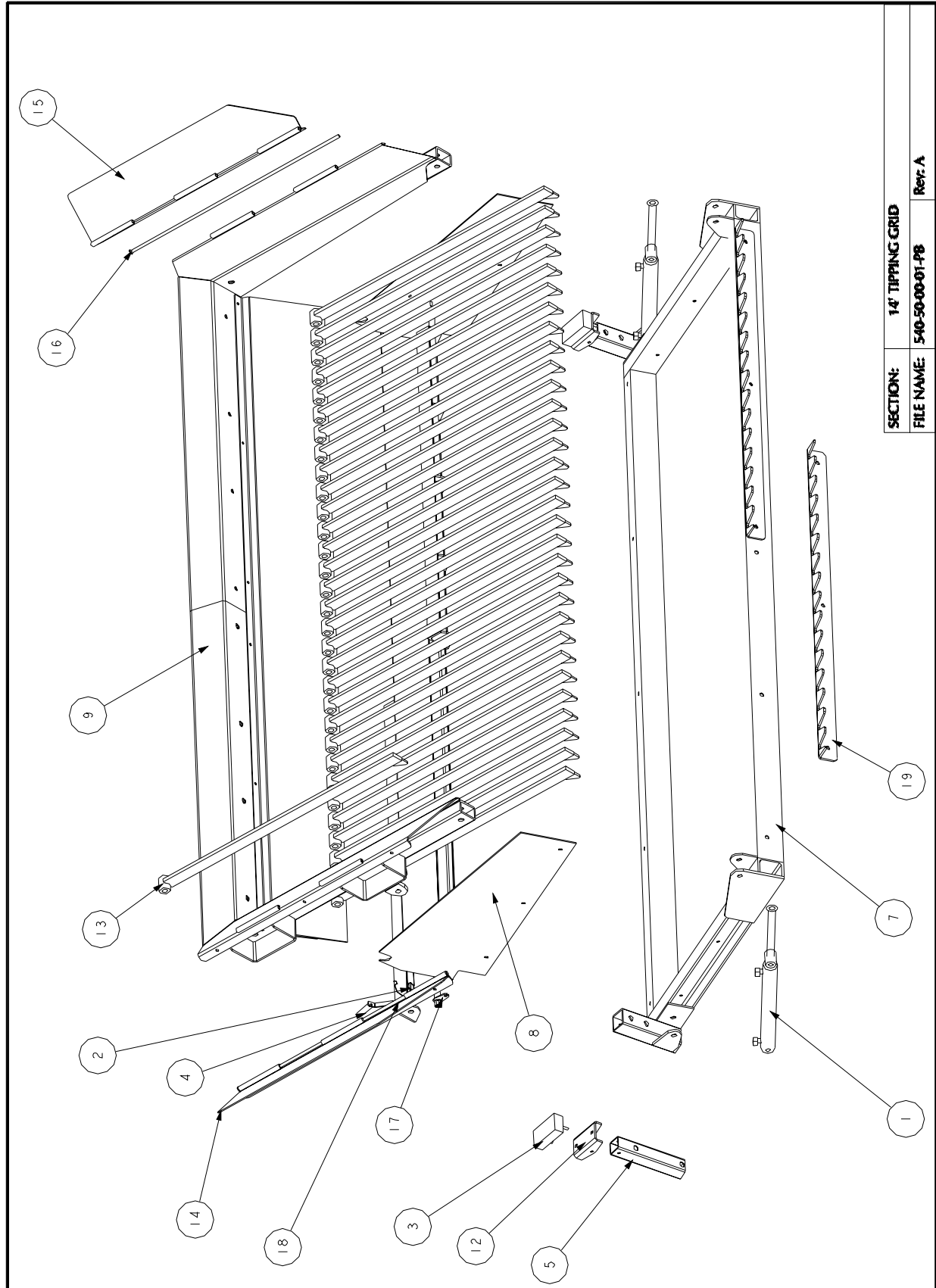
6" OPTION (BARS)  
PART NO: 540-50-15  
QTY: 24

6" OPTION (FRONT RUNNER)  
PART NO: 540-50-29  
QTY: 1

14 FT TIPPING GRID

SECTION: 540-50-00-01-PB  
FILE NAME: Rev: A

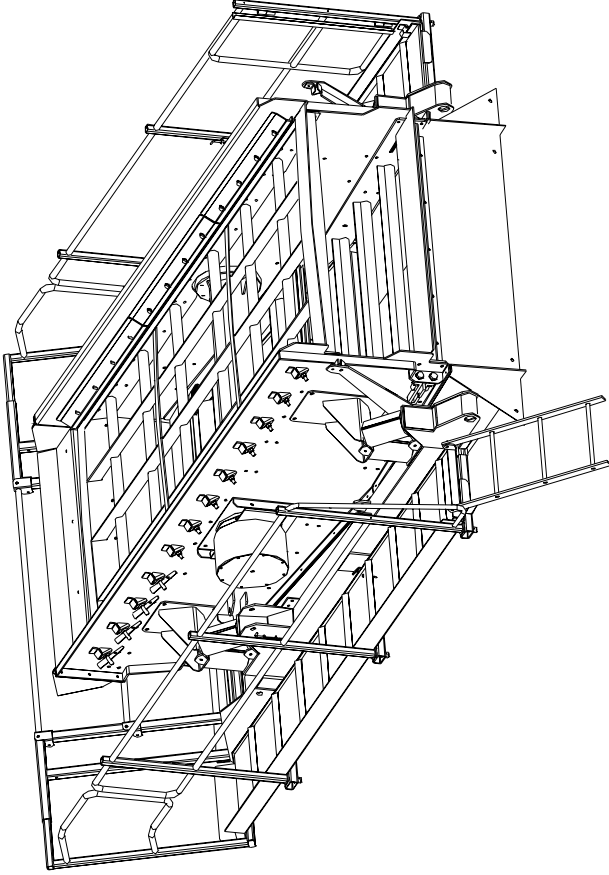
# Spare Parts



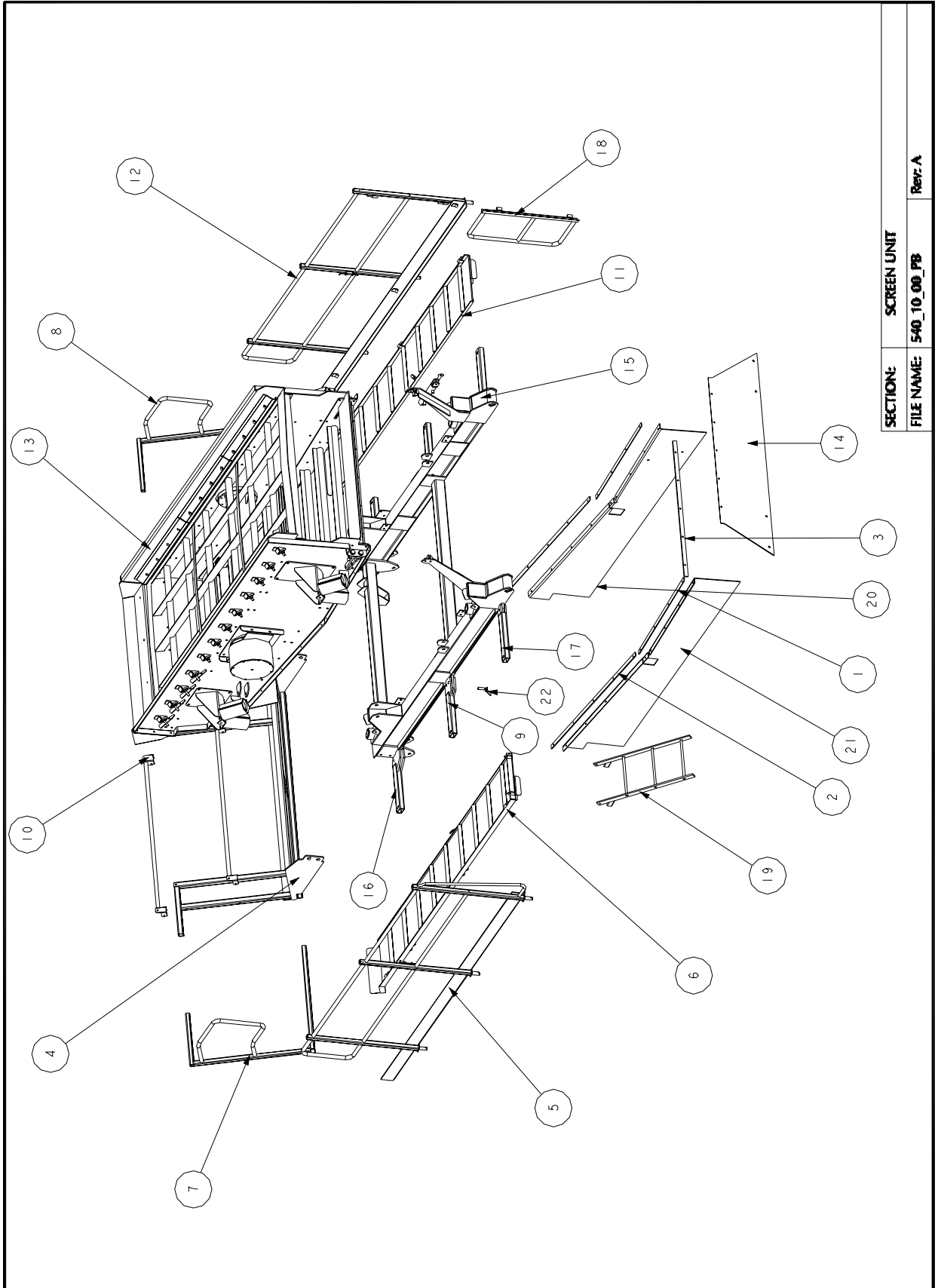
SECTION: 14' TIPPING GRID

FILE NAME: 540-50-00-01-P8

Rev: A

PARTS LIST				SECTION: SCREEN UNIT			
No.	PART No.	DESCRIPTION	QTY				
1	000-10-01	CLAMP STRAP	2	540_10_00_PB	Rev: A		
2	000-10-02	CLAMP STRAP	2				
3	540-10-63	RUBBER CLAMP	1				
4	540-10-79	WALKWAY	1				
5	540-10-80	LOWER RHS SCREEN HANDRAIL	1				
6	540-10-81	LOWER RHS SCREEN WALKWAY	1				
7	540-10-82	SLIDING HANDRAIL	1				
8	540-10-83	SLIDING HANDRAIL	1				
9	540-10-84	SIDE WALKWAY PIVOT MTG	2				
10	540-10-85	REAR SLIDING HANDRAIL	2				
11	540-10-86	LOWER LHS WALKWAY	1				
12	540-10-87	LOWER LHS HANDRAIL	1				
13	540-10-00-01	SCREEN UNIT COMPLETE (SECOND GENERATION)	1				
14	540-10-63-001	SCREEN DISCHARGE RUBBER	1				
15	540-10-20	SCREEN SUBFRAME ASSY	1				
16	540-10-32	SIDE WALKWAY PIVOT MTG	2				
17	540-10-33	SIDE WALKWAY PIVOT MTG LONG	2				
18	540-10-43	LOWER LHS SCREEN HANDRAIL	1				
19	540-10-44	SCREEN LADDER	1				
20	540-10-62-001	SCREEN HANGING RUBBER	1				
21	540-10-62-002	SCREEN HANGING RUBBER	1				
22	96-20-0085	20X85 PIN	2				

# Spare Parts



SECTION:	SCREEN UNIT
FILE NAME:	540_10_00_PB
Rev:	A

# Spare Parts

PARTS LIST			
No.	PART No.	DESCRIPTION	QTY
1	10-25-6164	HYDRAULIC MOTOR	1
2	11-00-0319	ROLLER BEARING	2
3	12-11-0005	SCREEN SPRINGS	8
4	13-04-7522	TAPERLOCK	1
5	13-04-7560	TAPERLOCK	1
6	13-05-0180	HRC 180 COUPLING	2
7	13-05-1180	COUPLING INSERT	1
8	17-00-1744	END TENSIONER BAR ASSY	2
9	20-31-1153	SPRING COVER	15
10	21-00-0003	SIMPLICITY WEDGE KIT	8
11	90-0101-42-16120	M16X120 BOLT	16
12	90-0202-51-24150	M24X150 SETSCREW	8
13	90-2102-51-24000	M24_NUT_HEX	8
14	90-2301-41-16000	M16_NUT_NYLOC	16
15	90-4100-01-16000	M16_WASHER_FLAT	32
16	90-4100-01-24000	M24_WASHER_FLAT	8
17	540-10-76	BACK DEFLECTOR ASSEMBLY	1
18	540-10-88	SCREENBOX DEFLECTOR LINER	1
19	540-10-91-001	SCREEN RUBBER	1
20	540-10-92-001	RUBBER CLAMP	1
21	540-65-28	MOTOR MTG PLATE	1
22	540-10-01	SCREEN LHS ASSY	1
23	540-10-02	SCREEN RHS ASSY	1
24	540-10-03	BOTTOM DECK ASSY	1
25	540-10-04	TOP DECK ASSY	1
26	540-10-05	BEARING HOUSING MTG PLT	1
27	540-10-10	PIPE UNIT	1
28	540-10-11	SCREEN SHAFT ASSY	1
29	540-10-17	BEARING HOUSING ASSY	2
30	540-10-18	BEARING END CAP ASSY	2
31	540-10-18-002	BEARING SPACER RING	2
32	540-10-19	BEARING HOUSING MTG PLATE	1
33	540-10-23	TOP DECK SIDE TENSIONER ASSY	6
34	540-10-46	SCREEN FLYWHEEL	2
35	540-10-47	SCREEN COUNTERWEIGHT	4
36	540-10-51	FRONT SPRING ASSY MTG	1
37	540-10-52	BEARING HOUSING MTG PLT	1
38	540-10-53	BACK SPRING ASSY MTG	1
39	540-10-54	BEARING HOUSING MTG PLT	1
40	540-10-57	TENSIONER BRACKET	4
41	540-10-58-001	RUBBER CLAMP	2
42	540-10-59-001	SCREEN RUBBER	2
43	540-65-27	FREE VIB ELEMENT GUARD	1
44	540-65-29	FREE VIB GUARD END PLT	1
45	540-65-32	DRIVE & VIB GUARD	1
46	SCREEN_CAPPING_RUBBER	.	6

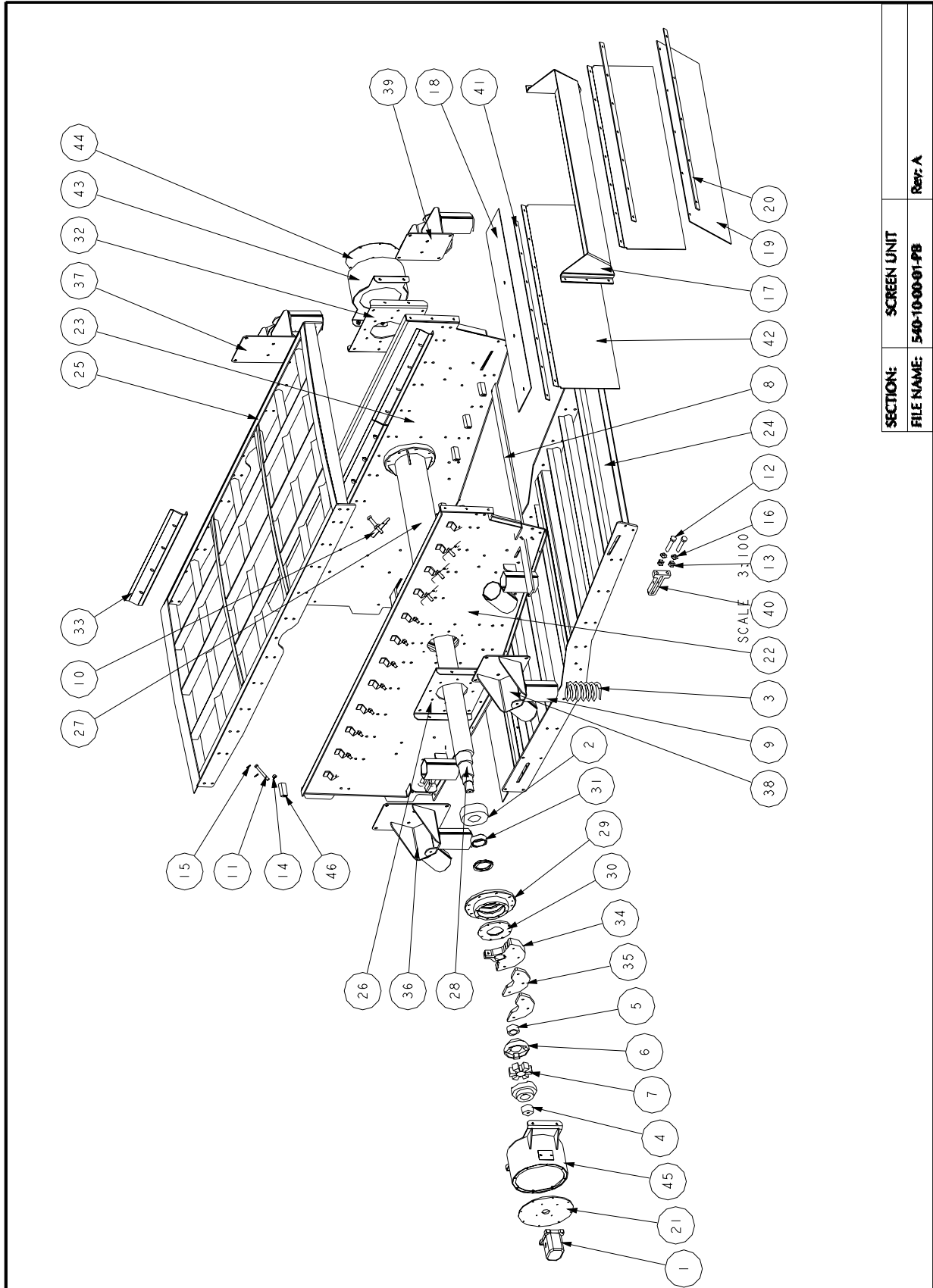
SCALE 1:25

SECTION: SCREEN UNIT COMPLETE (SECOND GENERATION)

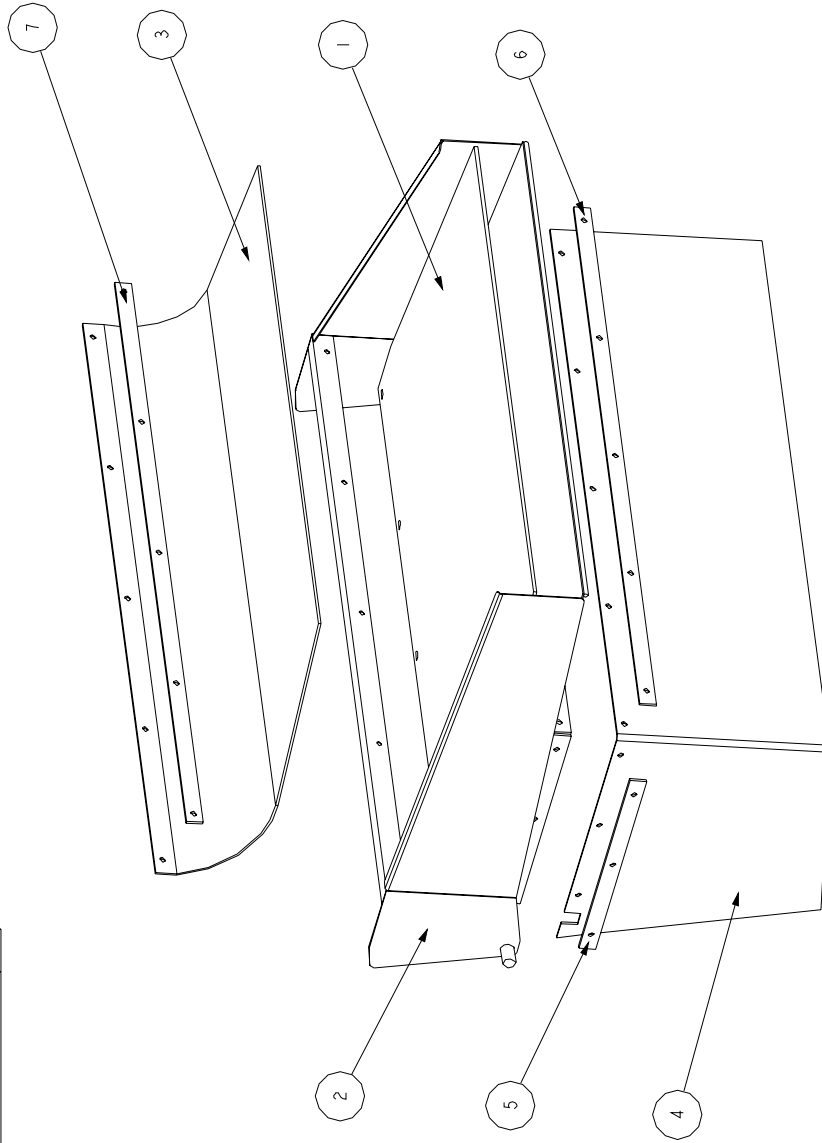
FILE NAME: 540-10-00-01-PB

Rev: A

# Spare Parts



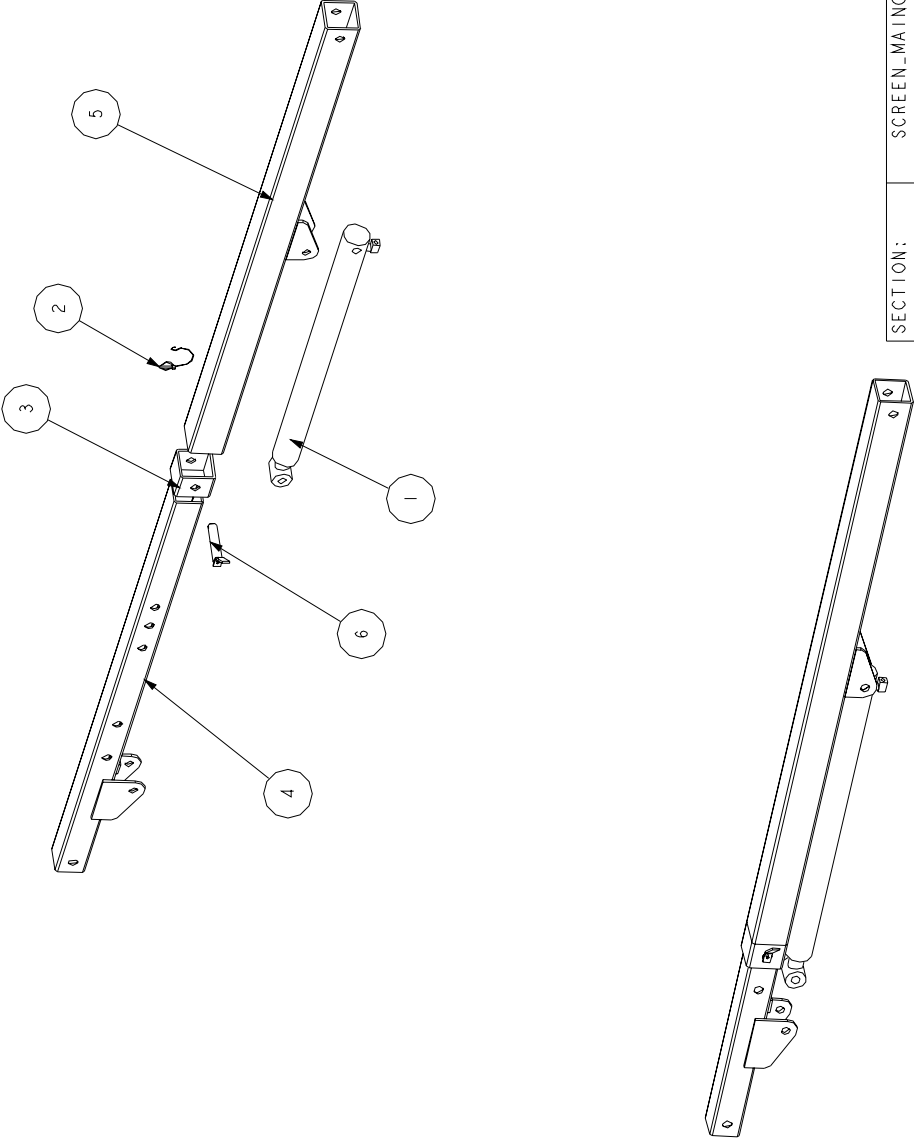
PARTS LIST			SECTION: TOP DECK CHUTE		Rev: A
No.	PART No.	DESCRIPTION	QTY	FILE NAME: 540_10_56_00_PB	
1	20-35-0100	CHUTE LINING	1		
2	540_10_56	TOP DECK CHUTE	1		
3	540_10_60	TOP DECK RUBBER	1		
4	540_10_61	BOTTOM DECK RUBBER	1		
5	540_10_65	CLAMP PLATE	1		
6	540_10_66	CLAMP PLATE	1		
7	540_10_67	CLAMP PLATE	1		





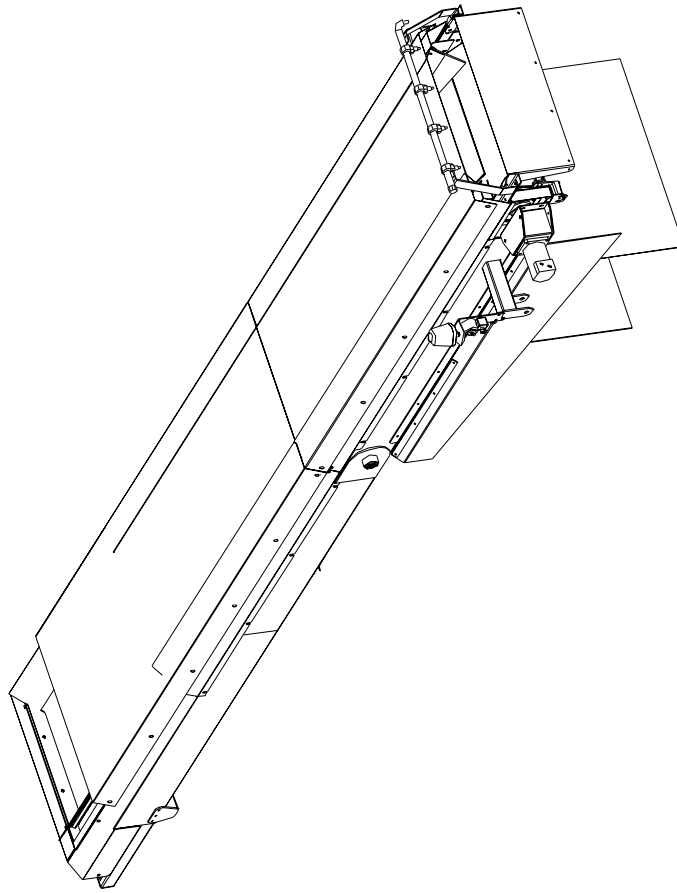
PARTS LIST

No.	PART No.	DESCRIPTION	QTY
1	10-28-0004	SCREEN RAM	1
2	12-02-0015	ST46 LINC PIN AND CHAIN	1
3	540-10-25	SCREEN SUPPORT SLIDE	1
4	540-10-27	SCREEN LOWER SUPPORT	1
5	540-10-28	SCREEN UPPER SUPPORT	1
6	96-30-0150	30X150 PIN	1



SECTION:	SCREEN_MAINCONVEYOR_SUPPORT
FILE NAME:	540_10_27_01
Rev:	A

PARTS LIST				
No.	PART No.	DESCRIPTION	QTY	
1	000-25-26	FEDBOOT BACK RUBBER	1	
2	000-25-27	FEDBOOT SIDE RUBBER	2	
3	000-25-34	80X60X42.5 COLLAR	1	
4	000-25-35	80X60X45.0 COLLAR	3	
5	000-90-50-001	50MM PIN COLLAR	2	
6	000-92-50-160	50MM WELDED PIN	2	
7	000-25-01	FEDBOOT SIDE CLAMP	2	
8	000-25-02	FEDBOOT BACK CLAMP	2	
9	000-25-0630	HYDRAULIC MOTOR	1	
10	11-20-0212	FLANGE BLOCK BEARING	1	
11	11-25-0212	PILLOW BLOCK BEARING	2	
12	12-10-0060	SPRING HOOK	4	
13	12-12-0027	ROSTA TENSTONER	2	
14	12-16-0007	DUST COVER	1	
15	12-16-0008	DUST COVER	1	
16	13-04-7550	TAPER LOCK	1	
17	13-04-7560	TAPER LOCK	1	
18	13-04-7660	TAPER LOCK	4	
19	13-05-0180	HRC 180 COUPLING	2	
20	13-05-1180	COUPLING INSERT	2	
21	14-05-0100	BEACON	1	
22	19-01-0780	CENTRE ROLLER	12	
23	19-05-1160	DISC RETURN ROLLER	2	
24	19-30-0220	30 DEGREE WING ROLLER LH	5	
25	19-31-0220	30 DEGREE WING ROLLER RH	5	
26	19-40-0220	40 DEGREE WING ROLLER LH	7	
27	19-41-0220	40 DEGREE WING ROLLER RH	7	
28	20-02-0542	MAIN CONVEYOR BELT	1	
29	20-55-0930	930 WIDE BELT SCRAPER	1	
30	540-25-03-00	MAIN CONVEYOR HEAD DRUM	1	
31	540-25-06-00	MAIN CONVEYOR TAIL DRUM	1	
32	540-25-43	MAIN CONVEYOR HEAD SECTION	1	
33	540-25-45	MAIN FEEDBOOT	1	
34	540-25-48	MAIN CONVEYOR LOWER SECTION	1	
35	540-25-50	LOWER SKIRT RUBBER	2	
36	540-25-51	UPPER SKIRT RUBBER	2	
37	540-25-54	CURTAIN ANGLE	2	
38	540-25-55	CLAMP PLATE	2	
39	540-25-56	1250MM SPRAY BAR ASSY	1	
40	540-25-59	SCREEN RUBBER MTG PLATE	2	
41	540-25-60	SCREEN/WALKWAY SPILLAGE RUBBER	2	
42	540-25-61	CLAMP PLATE	4	
43	540-25-63	BEACON MTG	1	
44	540-25-64	WEAR PLATE	1	
45	540-25-70	CLEVLOC BEARING ADJUSTMENT BRACKET	2	
46	540-25-71	MAIN DRUM V-SCRAPPER	1	
47	540-25-72	V-SCRAPPER BRACKET	1	
48	540-25-73-00	V - SCRAPER PLATE	1	
49	540-25-74	HEAD DRUM BLANKING PLATE	1	
50	540-65-60	UPPER RHS GUARD	2	
51	540-65-66	UPPER LHS GUARD	1	
52	540-65-67	UPPER RHS GUARD	1	
53	540-65-72	LOWER RHS GUARD	1	
54	540-65-73	LOWER LHS GUARD	1	
55	540-65-74	LOWER SIDE GUARD CLAMP	2	
56	540-65-75	UPPER SIDE GUARD CLAMP	2	
57	540-65-76	IDLER DRUM BACK GUARD	1	
58	540-65-77	LHS FEEDBOOT GUARD	1	
59	540-65-78	RHS FEEDBOOT GUARD	1	
60	540-20-09.003	V-SCRAPER RUBBER	1	
61	540-25-03	DRIVE DRUM	1	
62	540-25-04	DRIVE SHAFT	1	
63	540-25-06	DRUM	1	
64	540-25-07	SHAFT	1	
65	540-25-08	HEAD SECTION RHS	1	
66	540-25-09	HEAD SECTION LHS	1	
67	540-25-11	ADJUSTER BAR	2	
68	540-25-17	V-SCRAPER CLAMP	2	



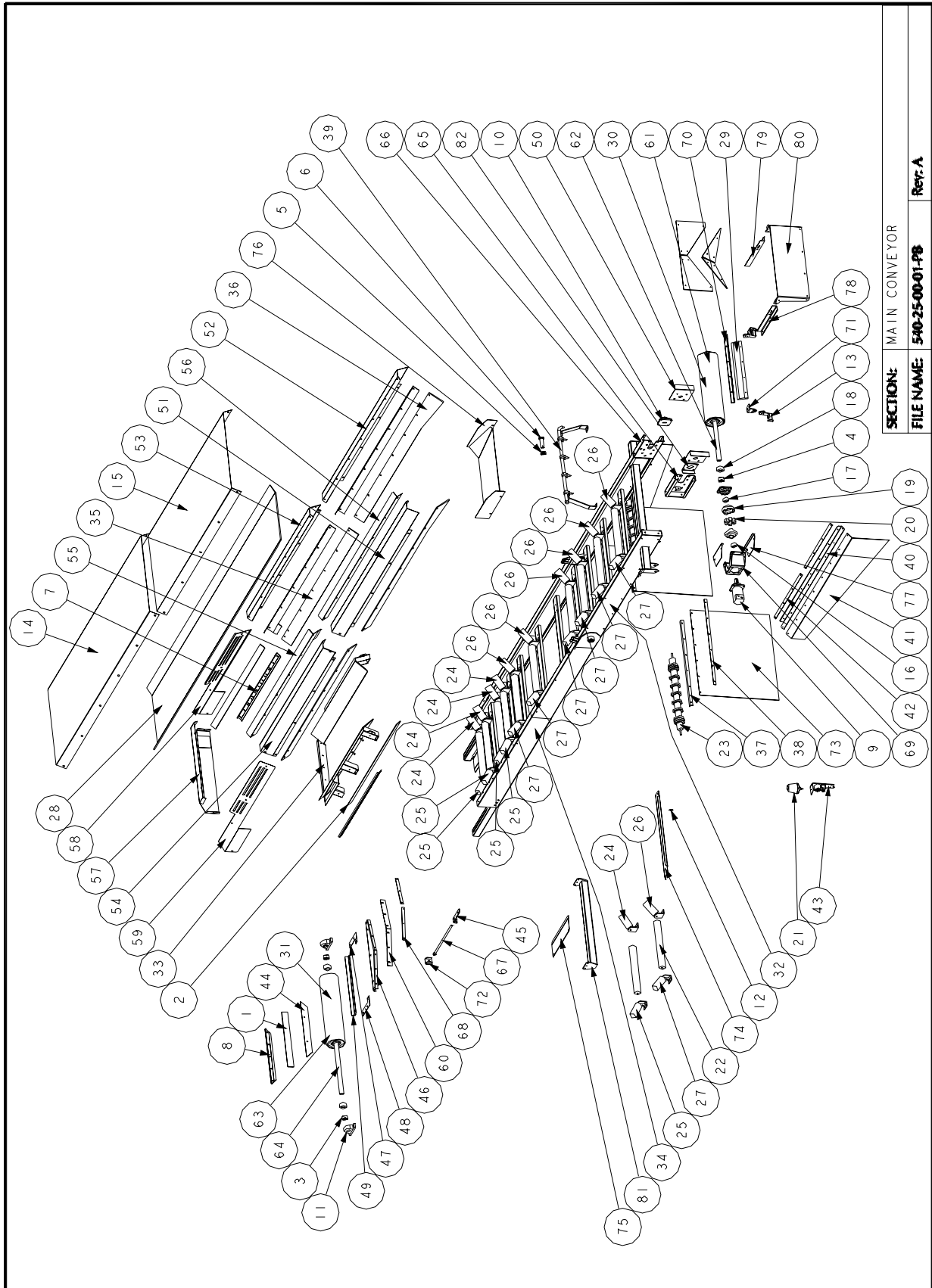
69	540-25-18	MOTOR MOUNTING	1
70	540-25-28	SCRAPER FRAME	1
71	540-25-29	SCRAPER MTG	2
72	540-25-30	ADJUSTER END CAP	2
73	540-25-31.003	RUBBER CURTAIN	2
74	540-65-02	RETURN ROLLER GUARD	2
75	540-65-17	UNDERSIDE GUARD	2
76	540-65-31	CHEESE GUARD	1
77	540-65-35	MOTOR MOUNTING GUARD	2
78	540-25-36	LHS SPREADER PLATE ANGLE	1
79	540-25-37	RHS SPREADER PLATE ANGLE	1
80	540-25-38	SPREADER PLATE	1
81	570-25-15	MAIN CONVEYOR SLIDE BRACKET	2
82	1107-35-35	60mm BEARING ADJUSTER PLATE	2

SECTION: MAIN CONVEYOR

FILE NAME: 540-25-00-01-P8

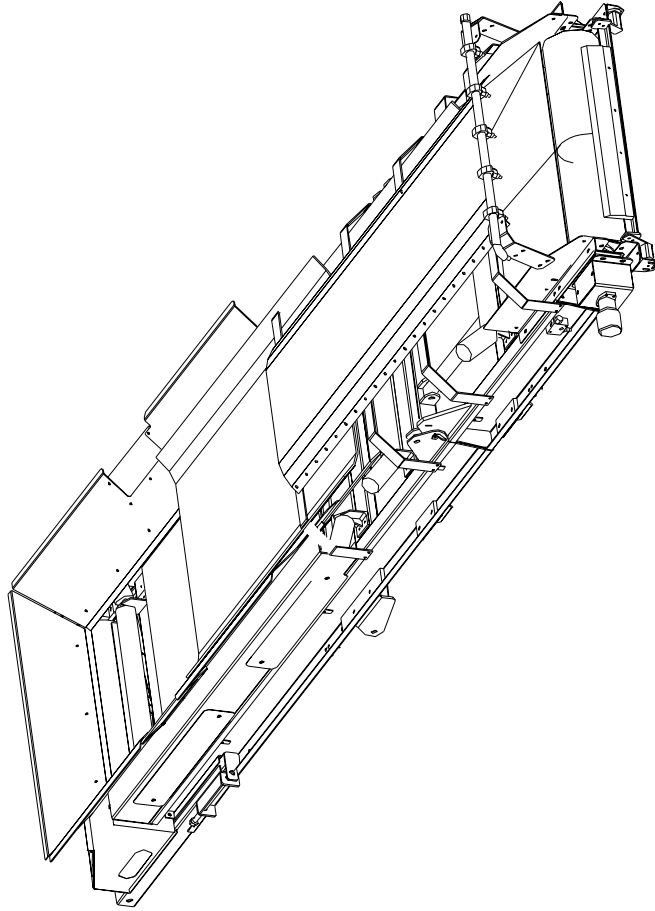
Rev: A

# Spare Parts



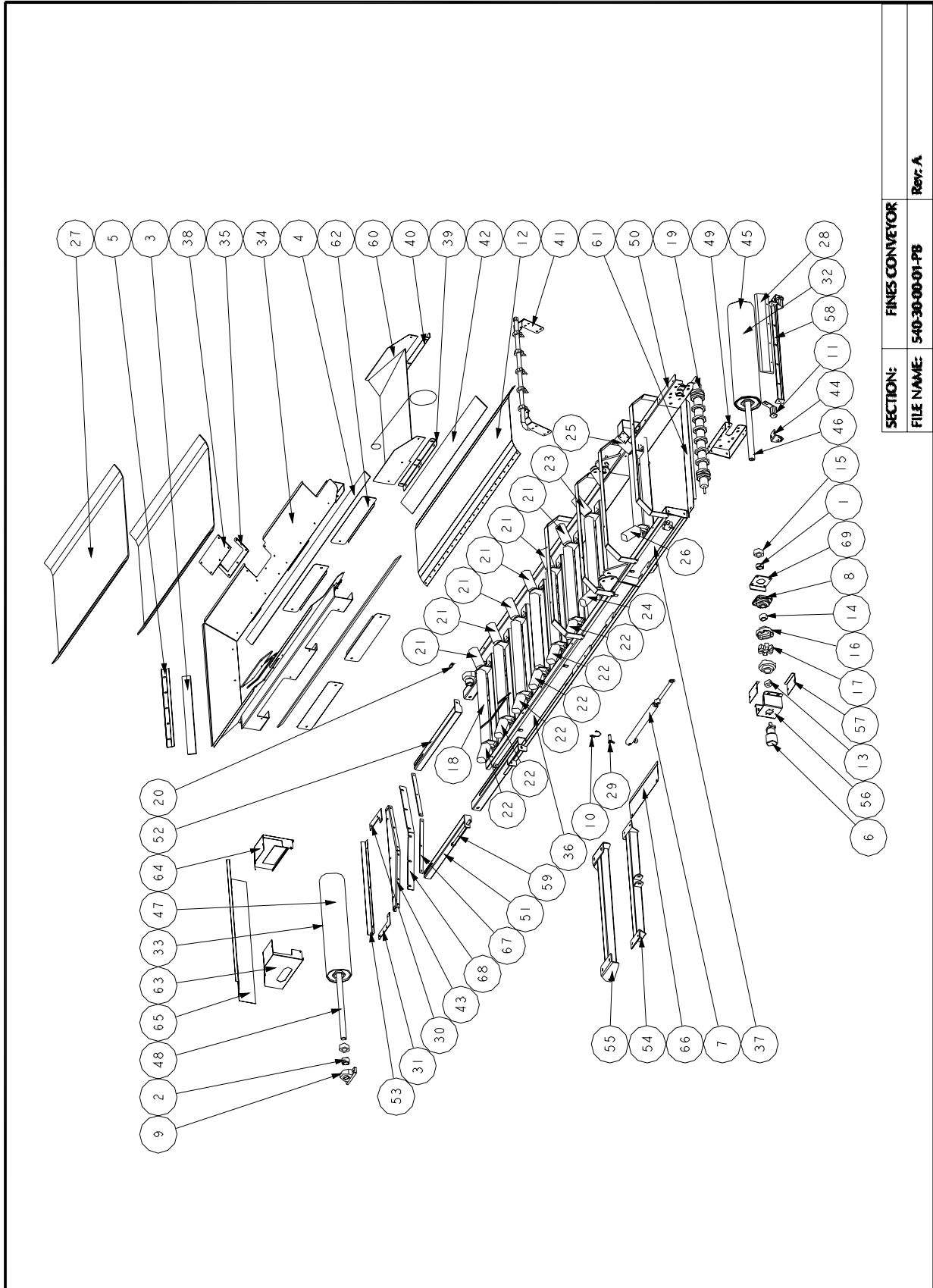
PARTS LIST					
No.	PART No.	DESCRIPTION	QTY		
1	000-25-33	80X60X37.5 COLLAR	2		
2	000-25-37	80X60X54.5 COLLAR	2		
3	000-30-05	RUBBER	1		
4	000-30-06	RUBBER	2		
5	000-30-02	FEEDBOOT BACK CLAMP	1		
6	10-25-0400	HYDRAULIC MOTOR	1		
7	10-28-0006	TAIL B RAM	1		
8	11-20-0212	FLANGE BLOCK BEARING	2		
9	11-25-0212	PILLOW BLOCK BEARING	2		
10	12-02-0015	SI 46 LINC PIN AND CHAIN	2		
11	12-12-0027	ROSTA TENSIONER	2		
12	12-76-0011	FINES CONVEYOR DUST COVER	1		
13	13-04-7535	TAPERLOCK	1		
14	13-04-7560	TAPERLOCK	4		
15	13-04-7660	TAPERLOCK	4		
16	13-05-0180	HRC 180 COUPLING	2		
17	13-05-1180	COUPLING INSERT	1		
18	19-01-0930	CENTRE ROLLER	8		
19	19-05-1310	DISC RETURN ROLLER 1310 RL	2		
20	19-10-0220	FIXING KIT/ROLLER	1		
21	19-20-0220	20 DEGREE WING ROLLER LH	6		
22	19-21-0220	20 DEGREE WING ROLLER RH	6		
23	19-40-0220	40 DEGREE WING ROLLER LH	1		
24	19-41-0220	40 DEGREE WING ROLLER RH	1		
25	19-50-0220	50 DEGREE WING ROLLER LH	1		
26	19-51-0220	50 DEGREE WING ROLLER RH	1		
27	20-03-0540	TAIL 1200MM EP400/3PLY	2		
28	20-55-1000	1000 WIDE BELT SCRAPER	1		
29	96-30-0085	30X85 PIN	2		
30	540-25-72	V-SCRAPER BRACKET	1		
31	540-25-73-00	V-SCRAPER BRACKET	1		
32	540-30-03-00	FINES CONVEYOR DRIVE DRUM	1		
33	540-30-06-00	FINES CONVEYOR TAIL DRUM	1		
34	540-30-35	FINES CONVEYOR FEEDBOOT	1		
35	540-30-36	FEEDBOOT RUBBER CLAMP	2		
36	540-30-37	FINES CONVEYOR LOWER SECTION	1		
37	540-30-38	FINES CONVEYOR UPPER SECTION	1		
38	540-30-39	BLANKING PLATE	2		
39	540-30-40	DRIVE DRUM GUARD BRACKET	1		
40	540-30-41	DRIVE DRUM GUARD BRACKET	1		
41	540-30-45	1400 SPRAY BAR ASSY	1		
42	540-30-47-001	10MM RUBBER	1		
43	540-30-48	TAIL DRUM V-SCRAPER	1		
44	540-25-29	SCRAPER MTG	2		
45	540-30-03	DRUM	1		
46	540-30-04	SHAFT	1		
47	540-30-06	DRUM	1		
48	540-30-07	SHAFT	1		
49	540-30-08	BEARING MTG PLATE RH	1		
50	540-30-09	BEARING MTG PLATE LH	1		
51	540-30-10	BEARING ADJUSTER RH	1		
52	540-30-11	BEARING ADJUSTER LH	1		
53	540-30-13	TAIL DRUM SCRAPER PLATE	1		
54	540-30-20	FINES UPPER RAM BRACKET	2		
55	540-30-21	FINES LOWER RAM BRACKET	1		
56	540-30-23	MOTOR MTG ASSY	1		

57	540-30-24	COUPLING COVER	2
58	540-30-25	SCRAPER FRAME	1
59	540-30-28	BEARING ADJUSTER BOLT	2
60	540-65-11	DRIVE DRUM GUARD	1
61	540-65-12	DISC ROLLER GUARD	2
62	540-65-13	FINES FEEDBOOT SIDE GUARDS	4
63	540-65-14	TAIL DRUM SIDE GUARD RH	1
64	540-65-15	TAIL DRUM SIDE GUARD LH	1
65	540-65-16	TAIL DRUM BACK GUARD	1
66	540-65-17	UNDERSIDE GUARD	2
67	570-20-14-00	V-SCRAPER RUBBER CLAMP	2
68	570-20-15-001	V-SCRAPER RUBBER	1
69	1107-35-35	60mm BEARING ADJUSTER PLATE	2

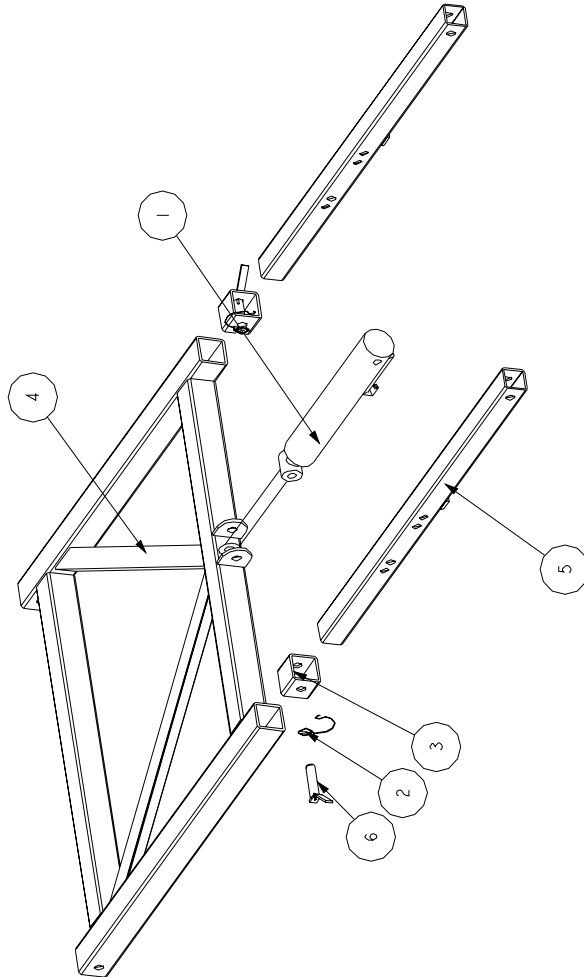


SECTION: FINES CONVEYOR  
FILE NAME: 540-30-00-01-PB  
Rev: A

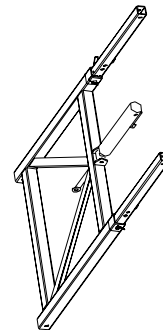
## Spare Parts



PARTS LIST		
No.	PART No.	DESCRIPTION
1	10-28-0008	TAIL A RAM 100MM BORE
2	12-02-0015	S146 LINC PIN AND CHAIN
3	540-10-26	TAIL CONVEYOR SUPPORT SLIDE
4	540-30-18	TAIL CONVEYOR TOP SUPPORT
5	540-30-19	TAIL CONVEYOR LOWER SUPPORT
6	96-30-0125	30X125 PIN



SCALE 1:20



SECTION:	TAIL CONVEYOR SUPPORT
FILE NAME:	540-10-26-01
Rev:	A

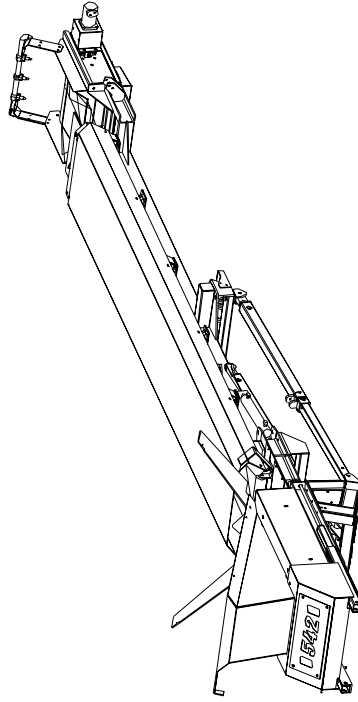
---

## Spare Parts

---

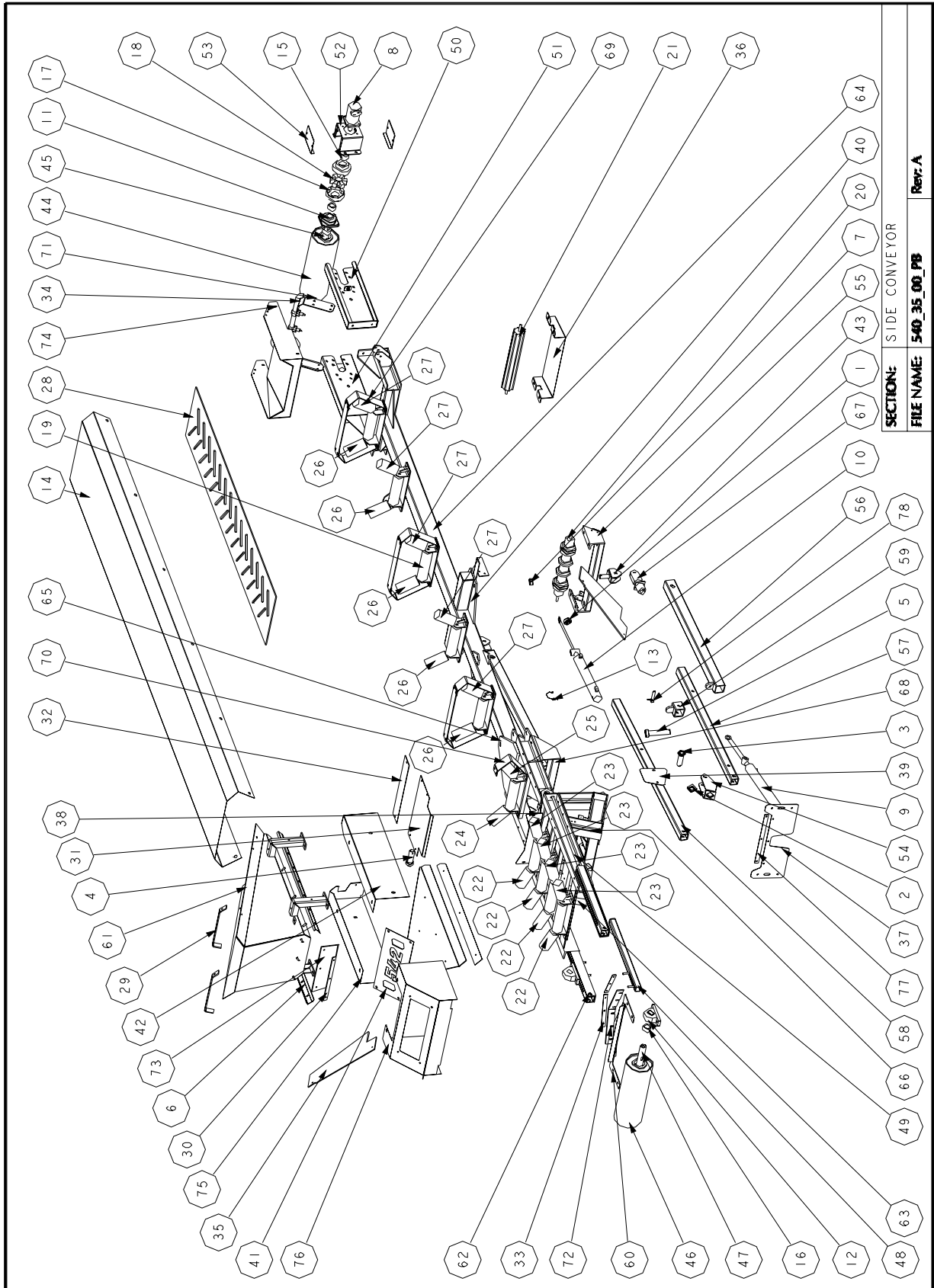
# Spare Parts

PARTS LIST			SECTION: SIDE CONVEYOR	
No.	PART No.	DESCRIPTION	QTY	FILE NAME: 540_35_00_PB
1	000-90-50-001	50MM PIN COLLAR	5	Ref: A
2	000-90-60-001	60MM PIN COLLAR	2	
3	000-92-50-160	50MM WELDED PIN	1	
4	000-92-50-175	50MM WELDED PIN	1	
5	000-92-50-250	50MM WELDED PIN	1	
6	000-35-01	CLAMP PLATE	2	
7	000-90-40-001	40MM PIN COLLAR	2	
8	10-25-0315	HYDRAULIC MOTOR	1	
9	10-28-0001	SIDE A RAM	1	
10	10-28-0002	SIDE B RAM	1	
11	11-20-0212	FLANGE BLOCK BEARING	2	
12	11-25-0212	PILLOW BLOCK BEARING	2	
13	12-02-0015	S146 LINC PIN AND CHAIN	1	
14	12-76-0006	DUST COVER	1	
15	13-04-7540	TAPERLOCK	1	
16	13-04-7560	TAPERLOCK	5	
17	13-05-0180	HRC 180 COUPLING	2	
18	13-05-1180	COUPLING INSERT	1	
19	19-01-0370	102/20 X 370 C/R	10	
20	19-04-0750	650 BELT DISC ROLLER	2	
21	19-06-0750	650 BELT VIB ROLLER	1	
22	19-20-0220	20 DEGREE WING ROLLER LH	4	
23	19-21-0220	20 DEGREE WING ROLLER RH	4	
24	19-40-0220	40 DEGREE WING ROLLER LH	1	
25	19-41-0220	40 DEGREE WING ROLLER RH	1	
26	19-60-0220	60 DEGREE WING ROLLER LH	5	
27	19-61-0220	60 DEGREE WING ROLLER RH	5	
28	20-04-0540	SIDE 650MM EP250/2PLY C15	1	
29	540-35-54	CHUTE SLIDER BRACKET	2	
30	540-35-57	BOOT RUBBER CLAMP	1	
31	540-35-63	STONE GUARD	1	
32	540-35-66	STONE GUARD	1	
33	540-35-68	CLAMP	2	
34	540-35-70	SIDE CONVEYOR SPRAY BAR ASSY	1	
35	540-35-59-001	FEEDBOOT SPILL RUBBER	2	
36	540-65-07	650 FULL VIB ROLLER GUARD	1	
37	540-65-45	SIDE CONV LOWER RETURN ROLLER GUARD	1	
38	540-65-46	RETURN ROLLER GUARD	1	
39	540-65-47	SIDE CONV SIDE GUARD	2	
40	540-65-58	RETURN ROLLER GUARD	1	
41	540-65-79	NUMBER PLATE	1	
42	540-65-82	FEEDBOOT GUARD	1	
43	540-35-06	UPPER STRUT PIVOT ASSY	2	
44	540-35-11	DRUM	1	
45	540-35-12	SHAFT	1	
46	540-35-14	DRUM	1	
47	540-35-15	SHAFT	1	
48	540-35-16	BELT TENSIONER ASSY	2	
49	540-35-22	SC TENSIONER BOLTS	2	
50	540-35-23	RHS HEAD SECTION	1	
51	540-35-24	LHS HEAD SECTION	1	
52	540-35-25	MOTOR MTG ASSY	1	
53	540-35-26	SC MOTOR MTG COVER	2	
54	540-35-34	LOWER STRUT PIVOT ASSY	2	
55	540-35-35	TOP SEC RAM MTG	1	
56	540-35-36	UPPER STRUT	2	
57	540-35-37	LOWER STRUT	1	
58	540-35-38	LOWER STRUT	1	
59	540-35-39	UPPER STRUT	2	
60	540-35-40	INSIDE BELT SCRAPER	1	
61	540-35-41	FEED BOOT	1	
62	540-35-43	SIDE CONVEYOR BASE	1	
63	540-35-44	SIDE CONVEYOR BASE SUPPORT	1	
64	540-35-45	SIDE CONVEYOR TOP SECTION	1	
65	540-35-46	SIDE CONVEYOR MID SECTION	1	
66	540-35-47	SIDE CONVEYOR BASE SUPPORT	1	
67	540-35-49	SIDE CONV UPPER PIVOT	2	
68	540-35-50	MID SEC RAM MTG	1	
69	540-35-51	BELT COVER	3	
70	540-35-55	BELT RETAINING BRACKET	1	
71	540-35-11-01	SIDE CONVEYOR DRIVE DRUM	1	
72	540-35-40-005	V-SCRAPER RUBBER	1	
73	540-35-58-001	BOOT RUBBER	1	
74	540-65-03	SIDE CONVEYOR BREPBY GUARD	1	
75	540-65-36	FEED BOOT SIDE GUARD	1	
76	540-65-37	FEED/TAIL DRUM GUARD	1	
77	570-35-26	SIDE CONV FEEDBOOT CLAMP	1	
78	96-25-0125	25.4X125 PIN	1	



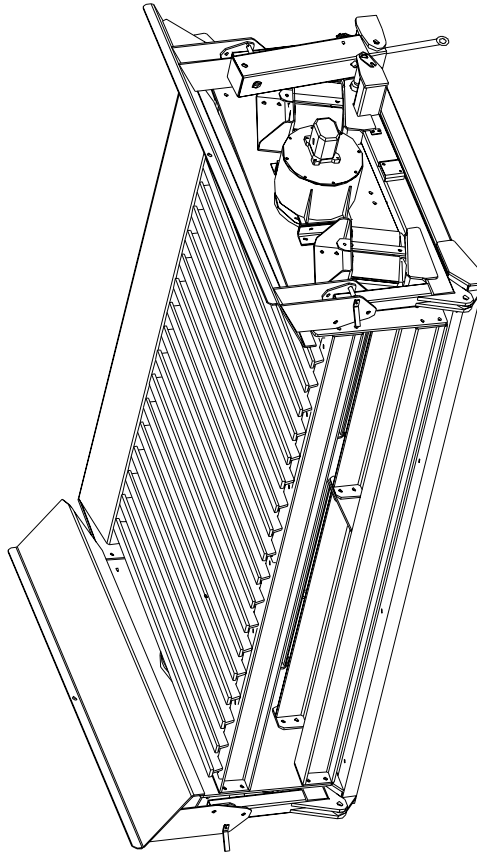


# Spare Parts



SECTION:	SIDE CONVEYOR
FILE NAME:	540_35_00_PB
REV:	A

PARTS LIST		
No.	PART No.	QTY
1	1000-90-30-001	1
2	10-25-6164	1
3	10-28-0010	2
4	11-00-0320	2
5	11-70-0040	4
6	12-02-0015	6
7	12-11-0005	8
8	13-04-7522	1
9	13-04-7560	1
10	13-05-0180	2
11	13-05-1180	1
12	20-31-1153	8
13	96-20-0150	4
14	96-25-1175	2
15	540-55-32	1
16	540-55-33	1
17	540-55-34	2
18	540-55-35	2
19	540-55-36	2
20	540-65-28	1
21	540-55-03-00	1
22	540-55-12	1
23	540-55-13	1
24	540-55-16	2
25	540-55-19	4
26	540-55-20	1
27	540-55-21	2
28	540-55-22	1
29	540-55-23	2
30	540-55-24	2
31	540-55-25	2
32	540-55-26	2
33	540-65-29	1
34	540-65-42	2

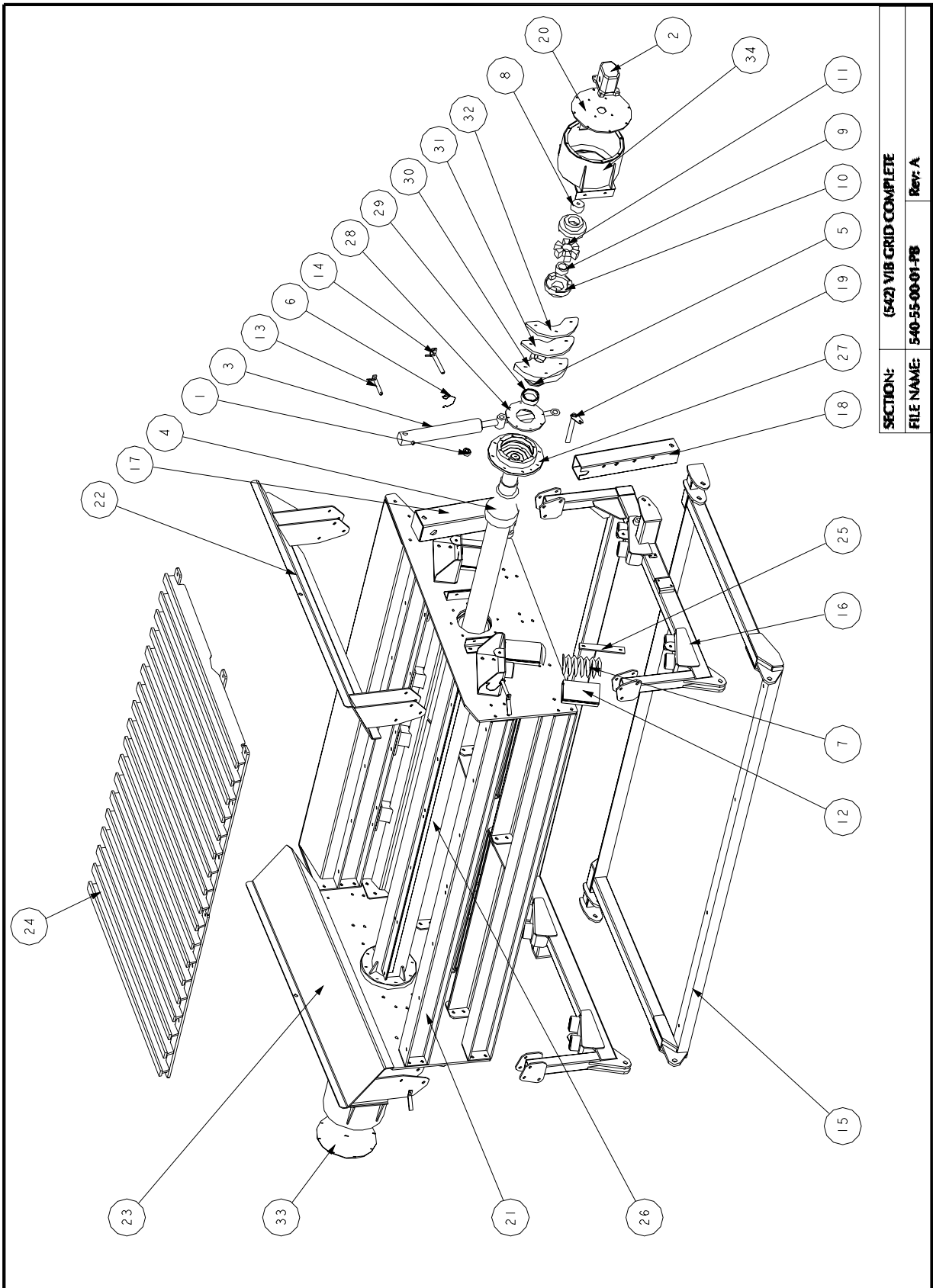


SECTION: VIB GRID COMPLETE

FILE NAME: 540-55-00-01-PB

Rev: A

# Spare Parts



SECTION:	(542) V18 GRID COMPLETE
FILE NAME:	540-55-00-01-PB
REV:	A

PARTS LIST			QTY
No.	PART No.	DESCRIPTION	
1	540-55-03	VIB GRID LH SIDE PLATE	2
2	540-55-04	VIB GRID FRONT TOP CROSS MEMBER	1
3	540-55-05	VIB GRID FRONT TOP CROSS MEMBER	1
4	540-55-07	BOTTOM DECK CENTER SUPPORT STRUT	1
5	540-55-08	VIB GRID BOTTOM BACK CROSS BEAM	1
6	540-55-09	VIB GRID BOTTOM DECK CROSS MEMBER	6
7	540-55-10	VIB GRID PIPE UNIT	1
8	540-55-11	VIB GRID SPRING MTG. BRACKET	4
9	540-55-27	FLYWHEEL GUARD MTG BRACKET	4
10	540-55-28	TOP DECK SIDE TENSIONER ASSY	2
11	540-55-31	VIB GRID FRONT TOP CROSS MEMBER	1
12	90-0101-42-16120	M16X120 BOLT	10
13	90-2301-41-16000	M16_NUT_NYLOC	10
14	90-4100-01-16000	M16_WASHER_FLAT	20

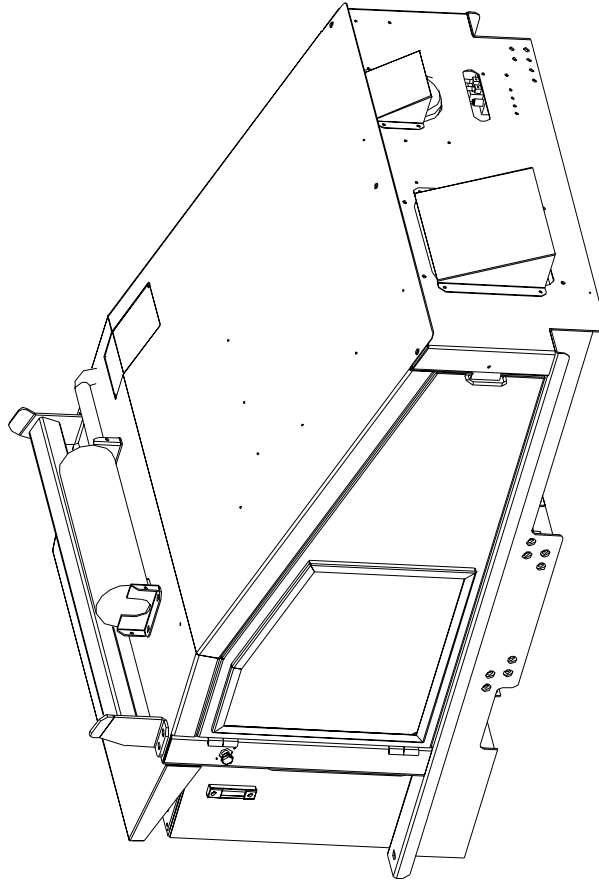
SECTION: VIBRATING GRID BOX COMPLETE  
FILE NAME: 540\_55\_03\_00\_PB  
Rev: A

---

## Spare Parts

---

## CAT ENGINE



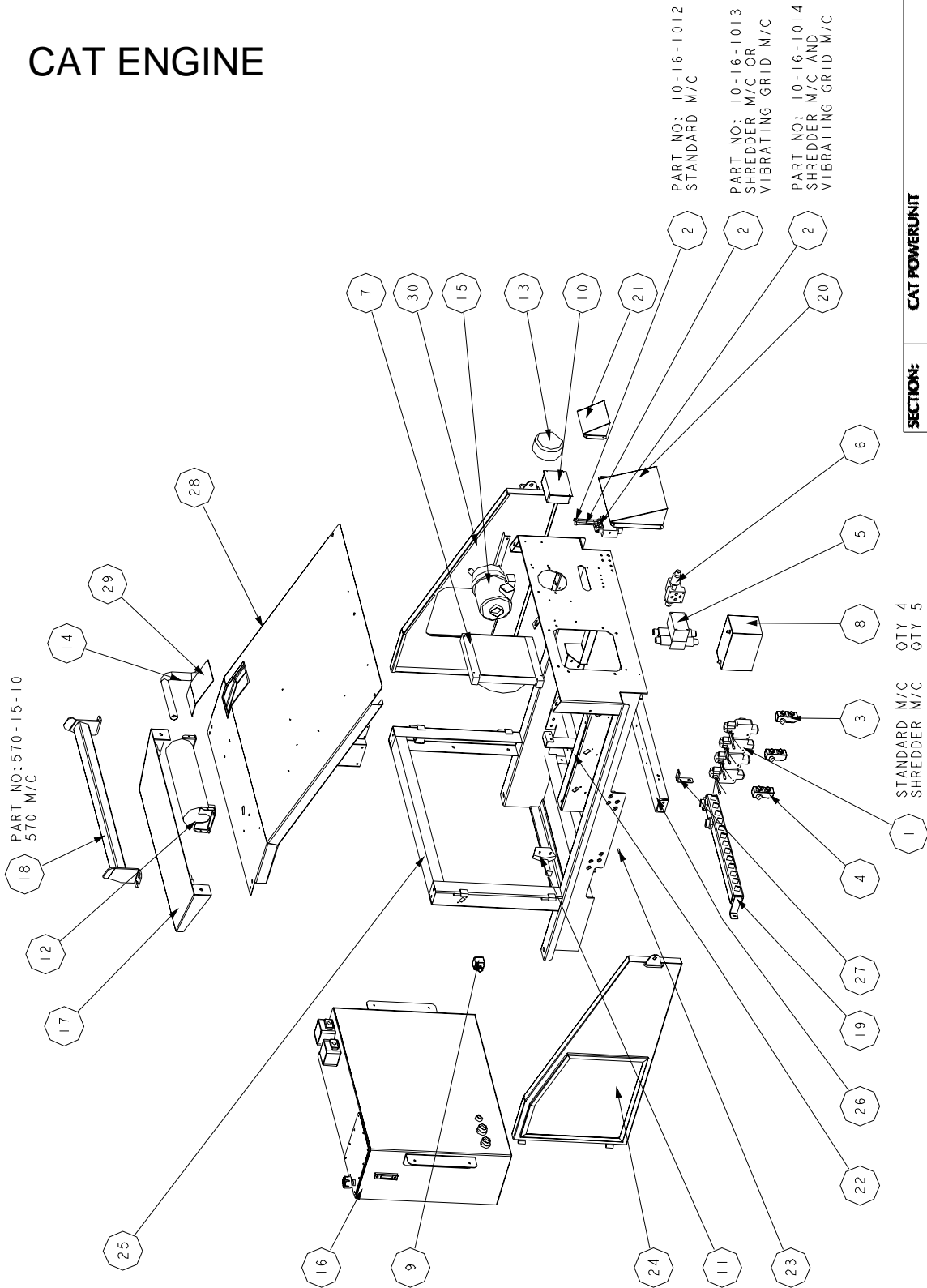
PARTS LIST			
No.	PART No.	DESCRIPTION	QTY
1	10-16-1010	CONTROL VALVE	4
2	10-16-1012	DOUBLE BANK AUX CV	1
3	10-16-2125	FLOW CONTROL VALVE	2
4	10-16-2200	FLOW CONTROL VALVE	1
5	10-16-4003	TRACK SOLENOID	1
6	10-16-4006	GRID SOLENOID	1
7	10-35-1612	OIL COOLER	1
8	12-70-0184	12V BATTERY	1
9	14-04-3540	EMERGENCY STOP	2
10	14-04-5540	RADIO CONTROLLED TRACK PANEL	1
11	15-05-0540	HAND THROTTLE	1
12	15-20-0100	EXHAUST	1
13	15-20-0214	PRE CLEANER	1
14	15-20-1100	EXHAUST OUTLET PIPE	1
15	15-22-0004	AIR CLEANER HOUSING	1
16	540-15-04-00	HYDRAULIC TANK	1
17	540-15-06	HYDRAULIC TANK CANOPY	1
18	540-15-13	MAIN CONVEYOR SUPPORT	1
19	540-15-14	MANIFOLD	1
20	540-15-18	OIL COOLER COVER	1
21	540-15-19	PRE CLEANER COVER	1
22	540-15-20	CONTROL VALVE PLATE	1
23	540-15-22-001	CONTROL VALVE SPACER	6
24	570-15-08	LH POWERUNIT DOOR	1
25	570-15-17	P-UNIT BASE FRAME	1
26	570-15-20	CAT CROSS MEMBER	2
27	570-15-21	MOUNTING BRACKET	1
28	570-15-23	ENGINE CANOPY	1
29	570-15-24	INSPECTION PLATE	1
30	570-15-26	LH POWER UNIT DOOR	1

SECTION: CAT POWERUNIT

FILE NAME: 570-15-17-00-P8

Rev: A

CAT ENGINE

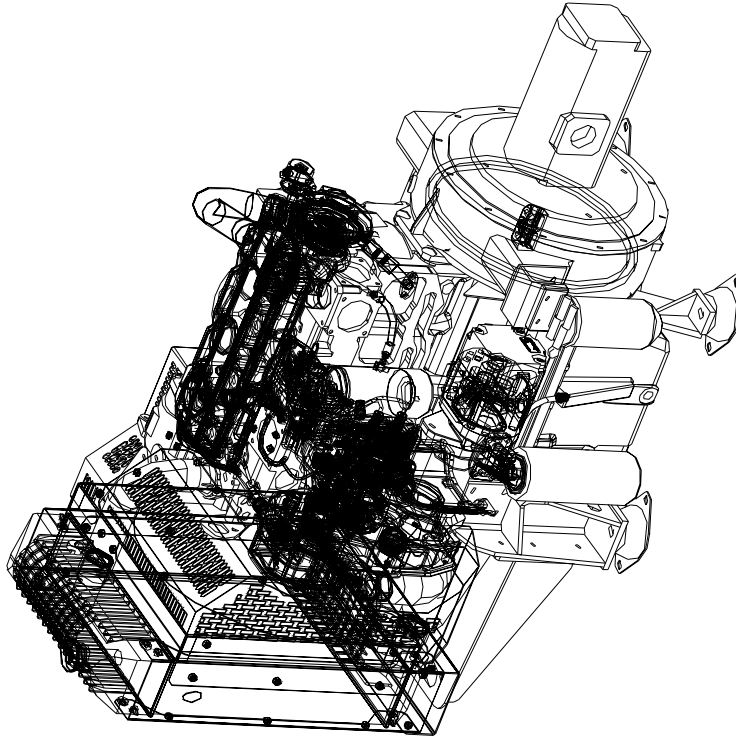


SECTION: CAT POWERUNIT

FILE NAME: 570-15-17-90-P8

Rev: A

## CAT ENGINE

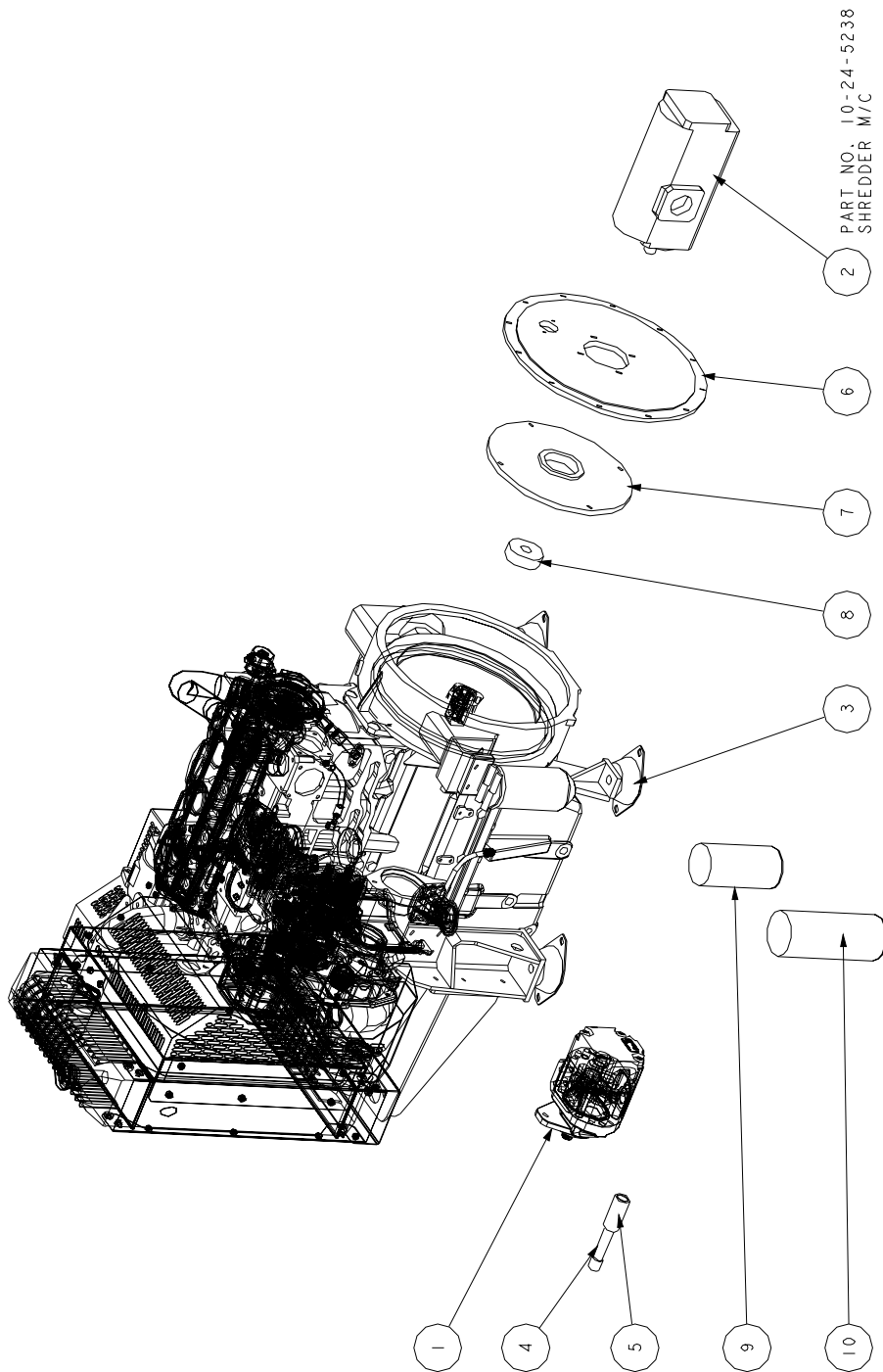


PARTS LIST		
No.	PART No.	DESCRIPTION
1	10-24-5224	23CC TANDEM PUMP CW
2	10-24-5236	TANDEM PUMP 6X1A50365036
3	12-05-0001	CAT 3054 ENGINE MOUNT
4	15-25-0001	COUPLING SHAFT
5	15-25-0002	COUPLING COLLAR
6	15-25-6045	PUMP MTG PLATE
7	15-25-7045	FLYWHEEL PLATE
8	15-25-8045	1" PUMP HUB
9	15-30-0171	FUEL FILTER
10	15-30-0172	OIL FILTER

SECTION:	CAT ENGINE	Rev: A
FILE NAME:	15-03-0074	

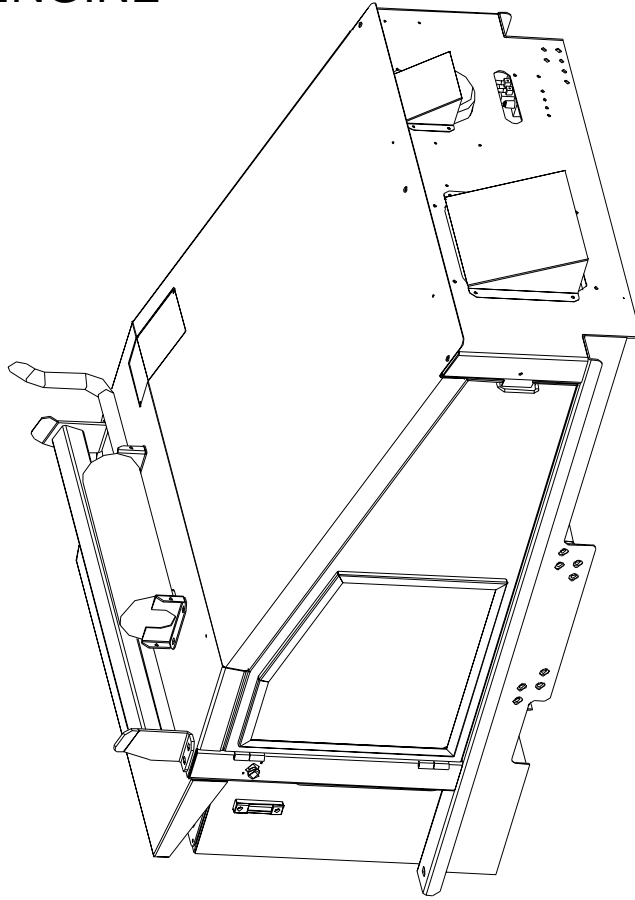


## CAT ENGINE



SECTION:	CAT ENGINE	Rev. A
FILE NAME:	15-03-0074	

## DEUTZ ENGINE



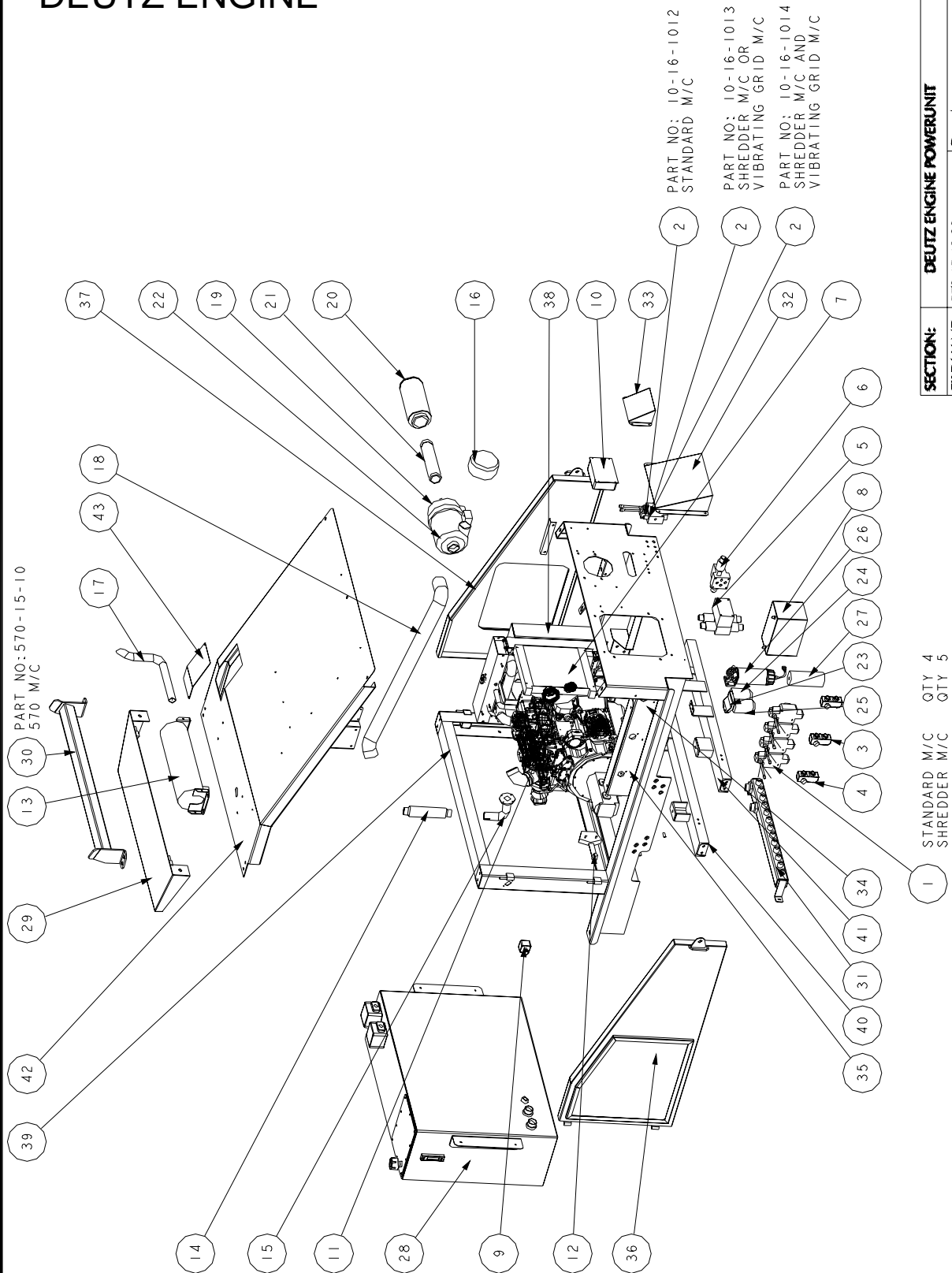
PARTS LIST		
No.	PART No.	DESCRIPTION
1	10-16-1010	CONTROL VALVE
2	10-16-1012	DOUBLE BANK AUX CV
3	10-16-2125	FLOW CONTROL VALVE
4	10-16-2200	FLOW CONTROL VALVE
5	10-16-4003	TRACK SOLENOID
6	10-16-4006	GRID SOLENOID
7	10-35-1612	OIL COOLER
8	12-70-0184	12V BATTERY
9	14-04-3540	EMERGENCY STOP
10	14-04-5540	RADIO CONTROLLED TRACK PANEL
11	15-02-2072	DEUTZ ENGINE
12	15-05-0540	HAND THROTTLE
13	15-20-0100	EXHAUST
14	15-20-0150	BRAIDED EXHAUST CENTRE PIECE
15	15-20-0155	TURBO OUTLET PIPE 2012
16	15-20-0214	PRE CLEANER
17	15-20-1100	EXHAUST OUTLET PIPE
18	15-21-0110	AIR INDUCTION HOSE
19	15-22-0001	AIR CLEANER HOUSING
20	15-22-0002	FILTER ELEMENT
21	15-22-0003	SAFETY CARTRIDGE
22	15-22-0540	AIR CLEANER KIT
23	15-30-0130	FUEL FILTER BRACKET
24	15-30-0130-00	FUEL FILTER ASSEMBLY
25	15-30-0131	FUEL FILTER
26	15-30-0175	WATERTRAP
27	15-30-0176	FILTER CARTRIDGE
28	540-15-04-00	HYDRAULIC TANK
29	540-15-06	HYDRAULIC TANK CANOPY
30	540-15-13	MAIN CONVEYOR SUPPORT
31	540-15-14	MANIFOLD
32	540-15-18	OIL COOLER COVER
33	540-15-19	PRE CLEANER COVER
34	540-15-20	CONTROL VALVE PLATE
35	540-15-22-001	CONTROL VALVE SPACER
36	570-15-08	LH POWERUNIT DOOR
37	570-15-09	LH POWER UNIT DOOR
38	570-15-16	AIR DUCT
39	570-15-17	P-UNIT BASE FRAME
40	570-15-18	DEUTZ CROSS MEMBER
41	570-15-19	DEUTZ CROSS MEMBER
42	570-15-23	ENGINE CANOPY
43	570-15-24	INSPECTION PLATE

SECTION: DEUTZ ENGINE POWERUNIT

FILE NAME: 570-15-18-00

Rev: A

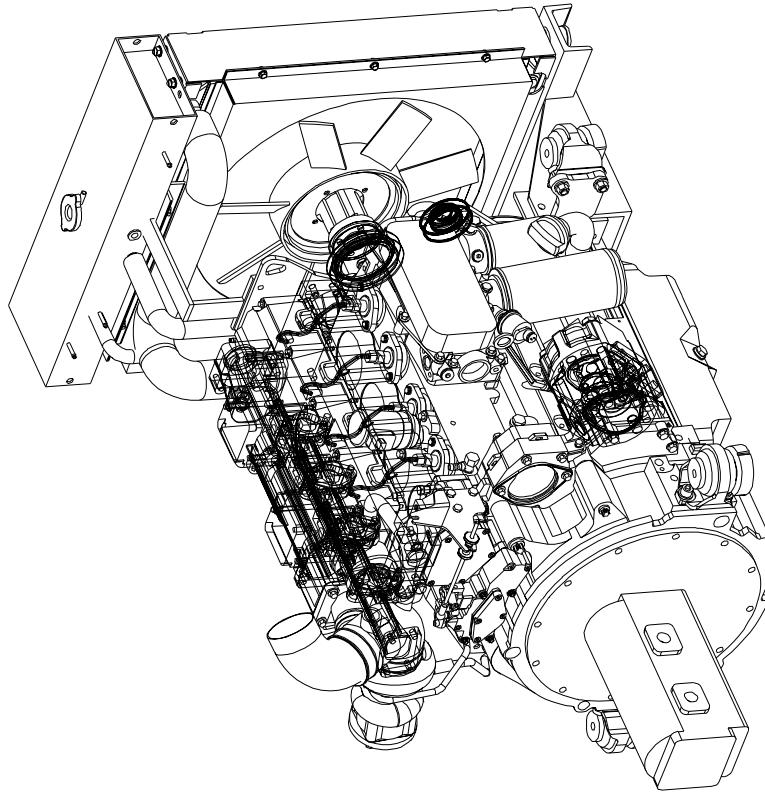
# DEUTZ ENGINE



SECTION:	DEUTZ ENGINE POWERUNIT
FILE NAME:	570-15-18-00 Ref: A

STANDARD M/C	QTY 4
SHREDDER M/C	QTY 5

## DEUTZ ENGINE



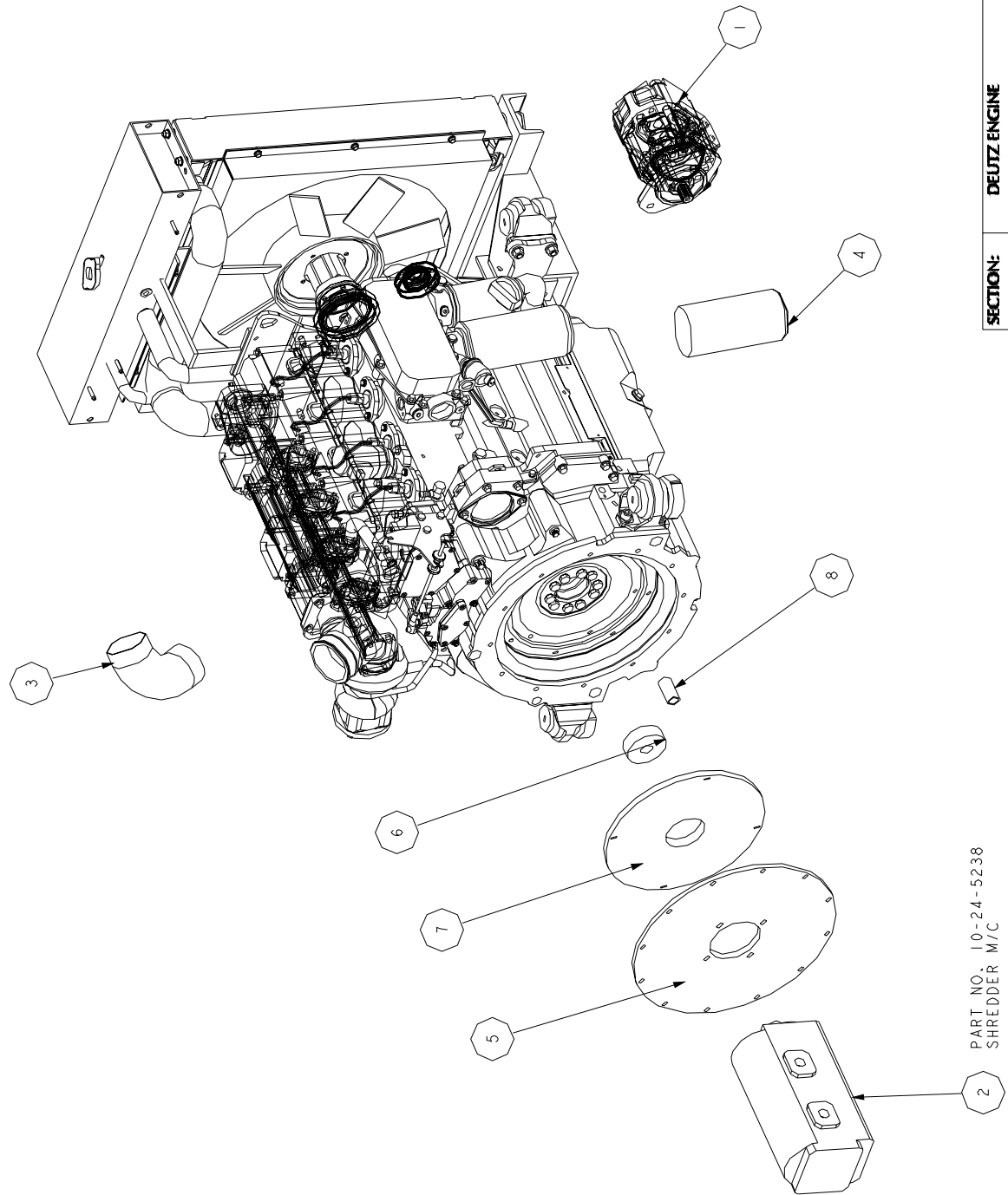
PARTS LIST			
No.	PART No.	DESCRIPTION	QTY
1	10-24-5225	23CC TANDEM PUMP CCW	1
2	10-24-5236	TANDEM PUMP 6X1A50365036	1
3	15-02-0001	TURBO INLET PIPE	1
4	15-23-0005	OIL FILTER	1
5	15-25-1048	PUMP MOUNTING PLATE	1
6	15-25-2048	1" PUMP HUB	1
7	15-25-3048	FLYWHEEL PLATE	1
8	15-30-0141	PUMP COUPLING	1

SECTION: DEUTZ ENGINE

FILE NAME: 15-02-2072

Rev: A

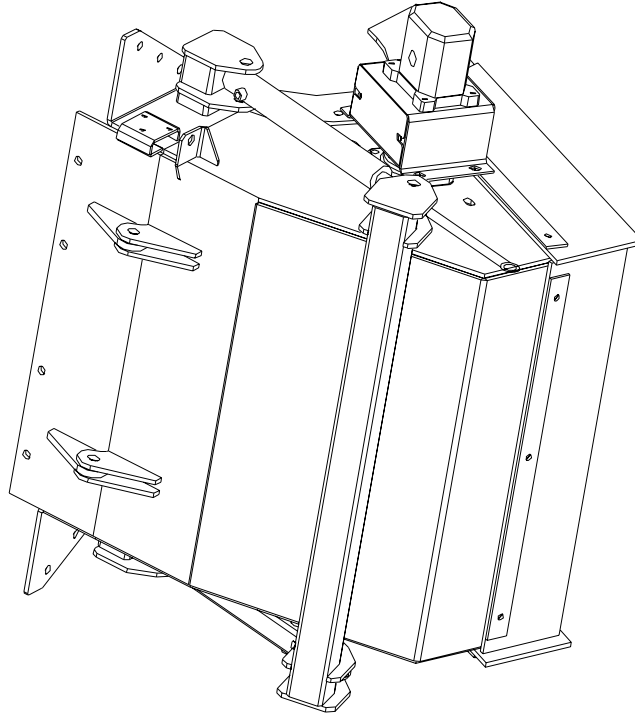
# DEUTZ ENGINE



SECTION:	DEUTZ ENGINE	Rev: A
FILE NAME:	15-02-2072	

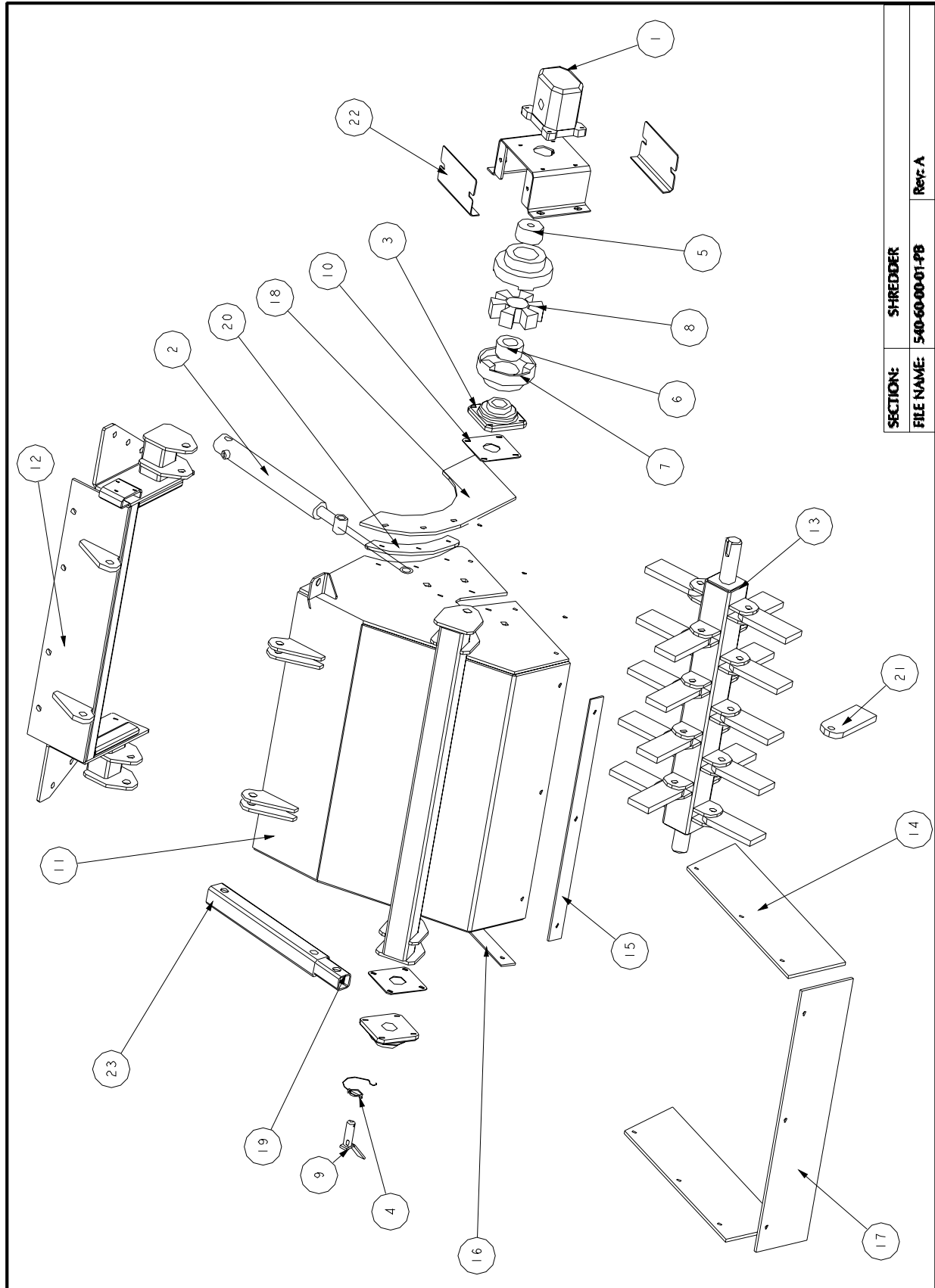
PART NO: 10-24-5238  
SHREDDER M/C

PARTS LIST			
No.	PART No.	DESCRIPTION	QTY
1	10-25-6164	HYDRAULIC MOTOR	1
2	10-28-0019	SHREDDER LIFT RAM	1
3	11-20-0210	BEARING	2
4	12-02-0015	SI 46 LINCH PIN AND CHAIN	1
5	13-04-7522	TAPERLOCK	1
6	13-04-7550	TAPERLOCK	1
7	13-05-0180	HRC 180 COUPLING	2
8	13-05-1180	COUPLING INSERT	1
9	96-25-0085	25.4X85 PIN	1
10	540-60-08	BLANKING PLATE	2
11	540-60-12	SHREDDER	1
12	540-60-13	SHREDDER MTG ASSEMBLY	1
13	540-60-14	SHREDDER BLADE ASSEMBLY	1
14	540-60-15	SHREDDER SIDE RUBBER	2
15	540-60-18	RUBBER STRAP	1
16	540-60-19	RUBBER STRAP	2
17	540-60-20	SHREDDER RUBBER CURTAIN	1
18	540-60-21-001	SHREDDER RUBBER CURTAIN	2
19	540-60-22	INNER STRUT	1
20	540-60-25	CLAMP PLATE	2
21	540-60-03	SHREDDER BLADES	18
22	540-60-04	MOTOR MOUNTING	1
23	540-60-07	SHREDDER STRUT	1



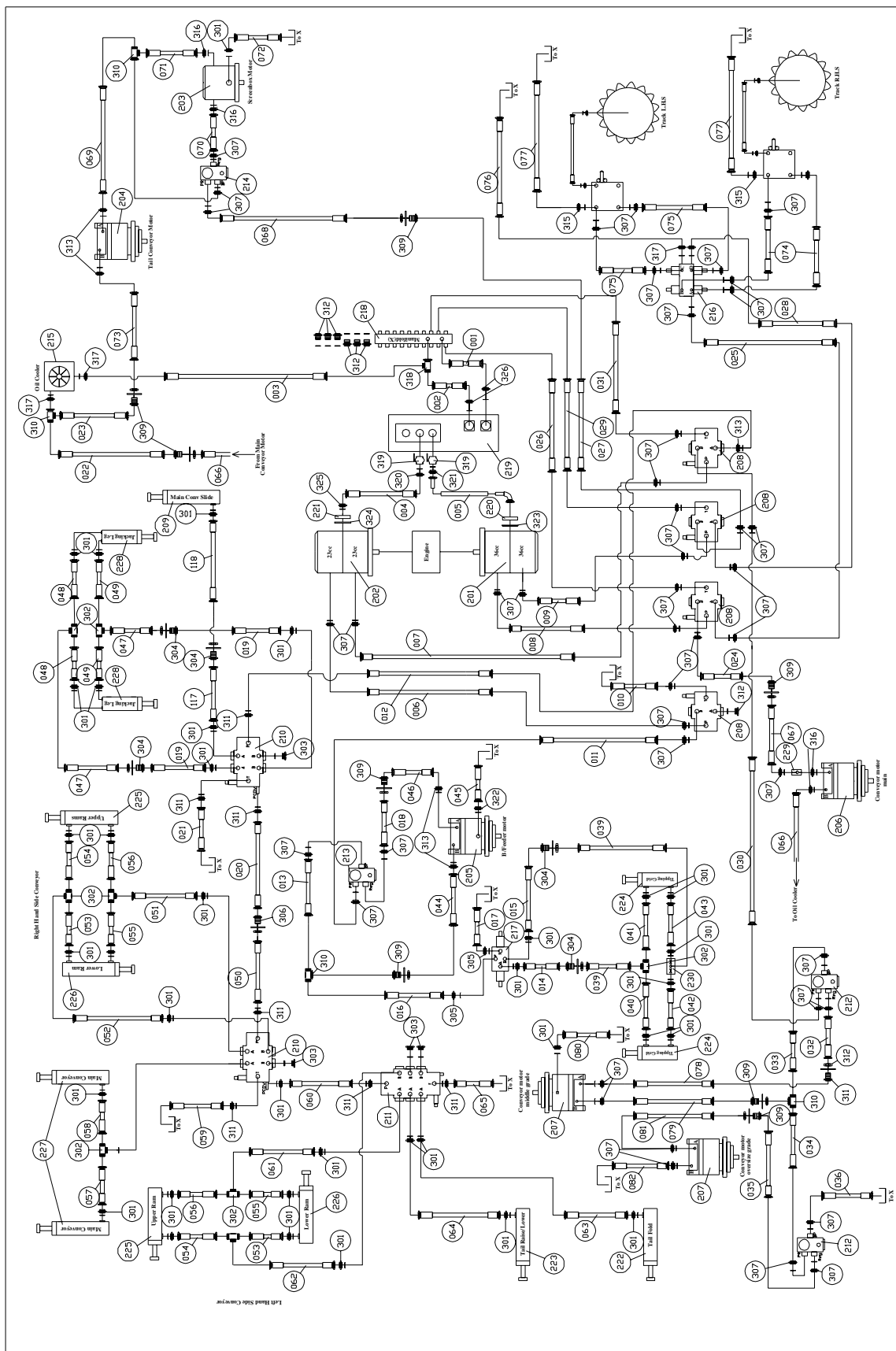
SECTION:	SHREDDER
FILE NAME:	540-60-01-PB
Rev:	A

# Spare Parts



SECTION:	SHREDDER	Rev: A
FILE NAME:	540-60-00-01-PB	

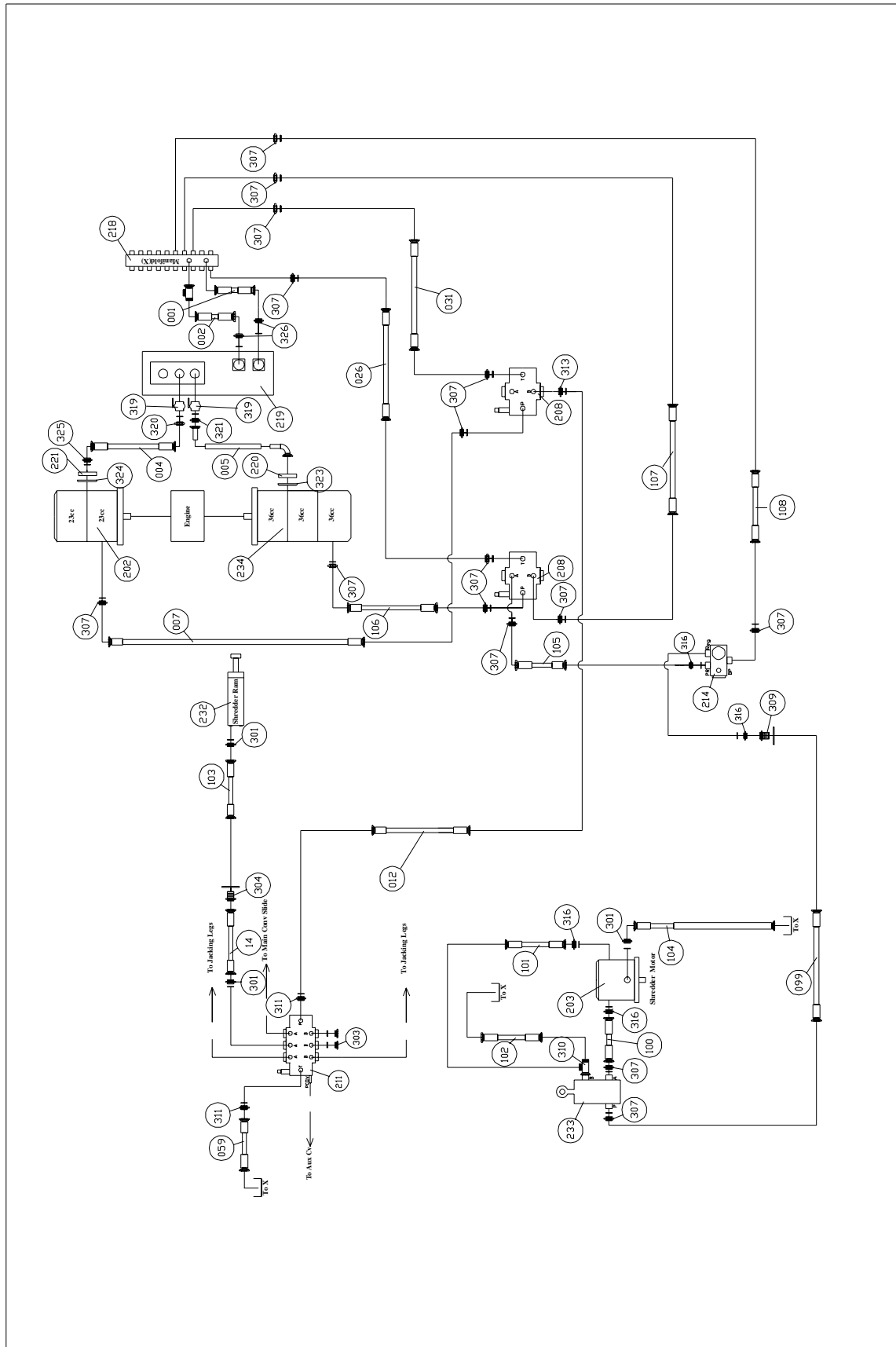
## Track Machine



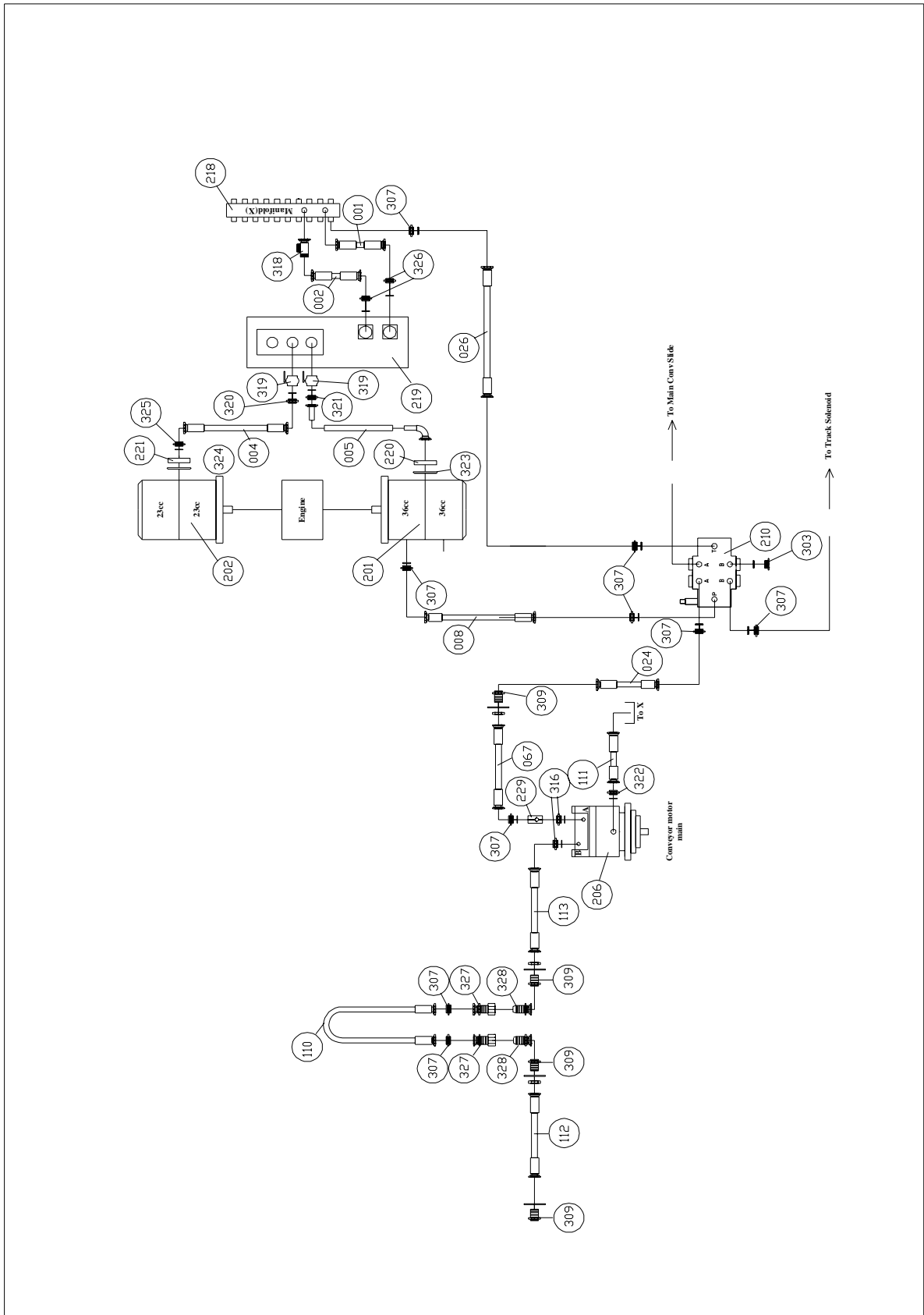




Shredder Circuit



## Extra Coupling Conveyor



## Spare Parts

### Description Powerunit hose kit

**Part no. 10290540**

Ref No.	Description	Part No.	Type	Qty
1	Return manifold to return filter (1)	10290001	R1AT-24	1
2	Return manifold tee to return filter (2)	10290002	R1AT-24	1
3	Oil cooler to return manifold tee	10290003	R1AT-20	1
4	Suction filter to 23cc tandem pump	10290004	R1AT-24	1
5	Suction filter to 36cc tandem pump	10290005		1
6	23cc pump to feeder cv (P)	10290006	R2AT-12	1
7	23cc pump to side conveyor cv (P)	10290007	R2AT-12	1
8	36cc pump to main conveyor cv (P)	10290008	R2AT-12	1
9	36cc pump to screen&tail conveyor cv (P)	10290009	R2AT-12	1
10	Feeder cv (T) to manifold	10290010	R2AT-12	1
11	Feeder cv (B) to feeder FCV (PR)	10290011	R2AT-12	1
12	Feeder cv (A) to jacking leg cv (P)	10290012	R2AT-08	1
13	Feeder FCV (BP) to tee on feeder return	10290013	R2AT-12	1
14	Tipping grid solenoid (A) to BHD	10290014	R2AT-06	1
15	Tipping grid solenoid (B) to BHD	10290015	R2AT-06	1
16	Tipping grid solenoid (P) to tee on feeder return	10290016	R2AT-12	1
17	Tipping grid solenoid (T) to manifold	10290017	R1AT-12	1
18	Feeder FCV (REG) to BHD	10290018	R2AT-12	1
19	Jacking leg cv (A&B) to BHD	10290019	R2AT-06	2
20	Jacking leg cv HPCO to BHD	10290020	R2AT-08	1
21	Jacking leg cv (T) to manifold	10290021	R1AT-08	1
22	Oil cooler tee to BHD (return from main)	10290022	R1AT-12	1
23	Oil cooler tee to BHD (return from tail)	10290023	R1AT-12	1
24	Main conveyor cv (B) to BHD	10290024	R2AT-12	1
25	Main conveyor cv (A) to track solenoid (P)	10290025	R2AT-12	1
26	Main conveyor cv (T) to manifold	10290026	R1AT-12	1
27	Screen & tail cv (B) to BHD	10290027	R2AT-12	1
28	Screen & tail cv (A) to track solenoid (P)	10290028	R2AT-12	1
29	Screen & tail cv (T) to manifold	10290029	R1AT-12	1
30	Side conveyors cv (B) to 1st side FCV (PR)	10290030	R2AT-12	1
31	Side conveyors cv (T) to manifold	10290031	R1AT-12	1
32	Side conv 1st FCV (REG) to BHD	10290032	R2AT-12	1
33	Side conv 1st FCV (BP) to tee on side conv return	10290033	R2AT-12	1
34	Side conv 2nd FCV(PR) to tee on side conv return	10290034	R2AT-12	1
35	Side conv 2nd FCV(REG) to BHD	10290035	R2AT-12	1
36	BP 2nd side fc/v to manifold	10290036	R1AT-12	1
37	Diesel line tank to filter	10290037	R1AT-08	1
38	Diesel filter to engine	10290038	R1AT-08	1

## Spare Parts

Ref No.	Description	Part No.	Type	Qty
39	BHD to tipping grid 50/50 flow divider & tee	10290039	R2AT-06	2
40	Tipping grid tee to grid ram A down stroke	10290040	R2AT-06	1
41	Tipping grid tee to grid ram B down stroke	10290041	R2AT-06	1
42	Tipping grid flow divider to grid ram A up stroke	10290042	R2AT-06	1
43	Tipping grid flow divider to grid ram B up stroke	10290043	R2AT-06	1
44	Feeder conveyor return to tee	10290044	R2AT-12	1
45	Feeder conveyor motor bleed to manifold	10290045	R1AT-06	1
46	Feeder FCV (REG) to feeder motor drive	10290046	R2AT-12	1
47	BHD to jacking leg up stroke tee	10290047	R2AT-06	2
48	Up stroke tee to jacking leg rams	10290048	R2AT-06	2
49	Down stroke tee to jacking leg rams	10290049	R2AT-06	2
50	BHD of HPCO to double bank aux (P)	10290050	R2AT-08	1
51	Rh side conv ram aux (A) to tee	10290051	R2AT-06	1
52	Rh side conv ram aux (B) to tee	10290052	R2AT-06	1
53	Tee to Rh/Lh side conv ram A up stroke	10290053	R2AT-06	2
54	Tee to Rh/Lh side conv ram B down stroke	10290054	R2AT-06	2
55	Tee to Rh/Lh side conv ram A down stroke	10290055	R2AT-06	2
56	Tee to Rh/Lh side conv ram B up stroke	10290056	R2AT-06	2
57	Main conv ram aux (A) to Rh ram up stroke	10290057	R2AT-06	1
58	Main conv ram aux (A) to Lh ram up stroke	10290058	R2AT-06	1
59	Double bank aux (T) to manifold	10290059	R1AT-08	1
60	Double bank aux HPCO to triple bank aux (P)	10290060	R2AT-08	1
61	Lh side conv ram aux (A) to tee	10290061	R2AT-06	1
62	Lh side conv ram aux (B) to tee	10290062	R2AT-06	1
63	Tail conv fold ram aux (A) to ram up stroke	10290063	R2AT-06	1
64	Tail conv raise & lower ram aux (A) to ram up stroke	10290064	R2AT-06	1
65	Triple bank aux (T) to manifold	10290065	R1AT-08	1
66	Main conveyor motor return to BHD	10290066	R1AT-12	1
67	BHD to main conveyor drive check valve	10290067	R2AT-12	1
68	BHD to screen FCV (PR)	10290068	R2AT-12	1
69	Tee at FCV (BP) to tail conv motor drive	10290069	R2AT-12	1
70	Screen FCV (REG) to screen motor drive	10290070	R2AT-12	1
71	Screen motor return to FCV (BP) tee	10290071	R2AT-12	1
72	Screen motor bleed to manifold	10290072	R1AT-06	1
73	Tail conveyor motor return to BHD oil cooler	10290073	R1AT-12	1
74	Track solenoid (A&B) to track drive & return	10290074	R2AT-12	2
75	Track solenoid (C&D) to track drive & return	10290075	R2AT-12	2
76	Track solenoid return to manifold	10290076	R2AT-16	1
77	Track motors bleed pipes to manifold	10290077	R1AT-08	2
78	BHD to Rh side conveyor motor drive	10290078	R2AT-12	1
79	Rh side conveyor motor return to BHD	10290079	R2AT-12	1
80	Rh side conveyor motor bleed to manifold	10290080	R1AT-06	1
81	BHD to Lh side conveyor motor drive	10290081	R2AT-12	1
82	Lh side conveyor motor return to manifold	10290082	R1AT-12	1

---

## Spare Parts

---

Ref No.	Description	Part No.	Qty
201	36cc Tandem Pump	10-24-5236	1
202	23cc Tandem Pump	10-24-5233	1
203	Screenbox Motor	10-25-6161	1
203	Seal Kit	10-19-0512	1
204	Tail Conveyor Motor	10-25-0400	1
204	Seal Kit	10-19-0509	1
205	Feed Conveyor Motor	10-25-0125	1
205	Seal Kit	10-19-0510	1
206	Main Conveyor Motor	10-25-0630	1
206	Seal Kit	10-19-0511	1
207	Side Conveyor Motor	10-25-0315	2
207	Seal Kit	10-19-0510	2
208	Drive Control Valve	10-16-1010	4
209	Single Bank Control Valve	10-16-1011	1
210	Double Bank Control Valve	10-16-1012	1
211	Tripple Bank Control Valve	10-16-1013	1
212	Flow Control Valve	10-16-2125	2
213	Flow Control Valve	10-16-2200	1
214	Flow Control Valve	10-16-0150	1
215	Oil Cooler	10-35-1612	1
216	Track Solenoid	10-16-4003	1
217	Tipping Grid Solenoid	10-16-4006	1
218	Manifold	540-15-14	1
219	Hydraulic Tank	540-15-04-00	1
220	2" Split Flange	10-24-0045	1
221	1/1/2" Flange	10-24-0033	1
222	Tail Fold Ram	10-28-0006	1
222	Seal Kit	10-19-0504	1
223	Tail Raise Ram	10-28-0009	1
223	Seal Kit	10-19-0506	1
224	Grid Ram	10-28-0003	2
224	Seal Kit	10-19-0501	2
225	Side Conveyor Fold Ram	10-28-0001	2
225	Seal kit	10-19-0505	2
226	Side Conveyor Lower Ram	10-28-0002	2
226	Seal kit	10-19-0505	2
227	Main Conveyor Ram	10-28-0004	2
227	Seal kit	10-19-0502	2
228	Jacking Leg Ram	10-28-0007	2
228	Seal kit	10-19-0505	2
229	Check Valve	10-16-6018	1

---

## Spare Parts

---

Ref No.	Description	Part No.	Qty
230	Flow Divider	10-16-5260	1
231	Vibrating Grid Ram	10-28-0010	2
231	Vibrating Grid Ram Seal Kit	10-19-0505	2
232	Shredder Ram	10-28-0019	1
232	Shredder Ram Seal Kit	10-19-0513	1
233	Mechanical Diverter Switch	10-17-0103	1
234	36cc Triple Pump	10-24-5336	1
235	Feed Conveyor Gearbox	10-26-0095	1
236	Seal Kit	10-19-0507	1

Ref No.	Description	Part No.
301	3/8" x 3/8" MM Adaptor	10-01-1109
302	3/8" Male Equal Tee	10-04-1109
303	3/8" Blanking Plug	10-09-0009
304	3/8" x 2" Long Bulkhead	10-03-1110
305	3/4" x 3/8" MM Adaptor	10-01-1111
306	1/2" x 2" Long Bulkhead	10-03-1115
307	3/4" x 3/4" MM Adaptor	10-01-1118
308	3/4" Male Equal Tee	10-04-1118
309	3/4" x 2" Long Bulkhead	10-03-1119
310	3/4" MFM Tee	10-10-0023
311	1/2" x 3/8" MM Adaptor	10-01-1110
312	3/4" Blanking Plug	10-09-0018
313	3/4" x 1/2" MM Adaptor	10-01-1115
314	1" x 1" MM Adaptor	10-01-1122
315	1/2" x 1/2" MM Adaptor	10-01-1114
316	1" x 3/4" MM Adaptor	10-01-1119
317	1/1/4" x 3/4" MM Adaptor	10-01-1120
318	1/1/2" x 1/1/4" "x 1/1/4" MFM Tee	10-01-0031
319	2" Ball Valve	10-16-0070
320	2" x 1/1/2" MM Adaptor	10-01-1136
321	2" x 2" MM Adaptor	10-01-1144
322	3/8" x 1/4" BSP MM Adaptor	10-01-1106
323	2" O-Ring	10-24-0046
324	1 1/2" O-Ring	10-24-0035
325	1 1/2" x 1 1/2" MM Adaptor	10-01-1132
326	1/1/2" x 1/1/4" MM Adaptor	10-01-0031
327	3/4" x 3/4" F Quick Release Coupling	10-20-0218
328	3/4" x 3/4" M Quick Release Coupling	10-20-0118

---

## Spare Parts

---

### Description Grease Hose Kit

Part no. 10291540

Description	Part No.	Type	Qty
Feeder tail drum Rh bearing	10290083	R703-3/16"	1
Feeder tail drum Lh bearing	10290084	R703-3/16"	1
Feeder drive drum Lh bearing	10290085	R703-3/16"	1
Tail conveyor head drum Lh bearing	10290086	R703-3/16"	1
Tail conveyor head drum Rh bearing	10290087	R703-3/16"	1
Tail conveyor head tail Lh bearing	10290088	R703-3/16"	1
Tail conveyor head tail Rh bearing	10290089	R703-3/16"	1
Main conveyor head drum LH bearing	10290090	R703-3/16"	1
Main conveyor head drum RH bearing	10290091	R703-3/16"	1
Main conveyor tail drum LH bearing	10290092	R703-3/16"	1
Main conveyor tail drum RH bearing	10290093	R703-3/16"	1
Side conveyor head drum LH bearing	10290094	R703-3/16"	2
Side conveyor head drum RH bearing	10290095	R703-3/16"	2
Side conveyor tail drum LH bearing	10290096	R703-3/16"	2
Side conveyor tail drum RH bearing	10290097	R703-3/16"	2
Screen bearings	10290098	R703-3/16"	2
Vibrating Grid RH Bearing	10290106	R703-3/16"	1
Vibrating Grid LH Bearing	10290107	R703-3/16"	1



## Spare Parts

### Description    Powerunit hose kit (Vibrating Grid)

**Part no.        10291540**

Ref No.	Description	Part No.	Type	Qty
1	Return manifold to return filter (1)	10290001	R1AT-24	1
2	Return manifold tee to return filter (2)	10290002	R1AT-24	1
3	Oil cooler to return manifold tee	10290003	R1AT-20	1
4	Suction filter to 23cc tandem pump	10290004	R1AT-24	1
5	Suction filter to 36cc tandem pump	10290005		1
6	23cc pump to feeder cv (P)	10290006	R2AT-12	1
7	23cc pump to side conveyor cv (P)	10290007	R2AT-12	1
8	36cc pump to main conveyor cv (P)	10290008	R2AT-12	1
9	36cc pump to screen&tail conveyor cv (P)	10290009	R2AT-12	1
10	Feeder cv (T) to manifold	10290010	R2AT-12	1
11	Feeder cv (B) to feeder FCV (PR)	10290011	R2AT-12	1
12	Side Conv cv (A) to jacking leg cv (P)	10290012	R2AT-08	1
14	Vibrating grid control valve to BHD	10291014	R2AT-06	1
18	Feeder FCV (REG) to BHD	10290018	R2AT-12	1
19	Jacking leg cv (A&B) to BHD	10290019	R2AT-06	2
20	Jacking leg cv HPCO to BHD	10290020	R2AT-08	1
21	Jacking leg cv (T) to manifold	10290021	R1AT-08	1
22	Oil cooler tee to BHD (return from main)	10290022	R1AT-12	1
23	Oil cooler tee to BHD (return from tail)	10290023	R1AT-12	1
24	Main conveyor cv (B) to BHD	10290024	R2AT-12	1
25	Main conveyor cv (A) to track solenoid (P)	10290025	R2AT-12	1
26	Main conveyor cv (T) to manifold	10290026	R1AT-12	1
27	Screen & tail cv (B) to BHD	10290027	R2AT-12	1
28	Screen & tail cv (A) to track solenoid (P)	10290028	R2AT-12	1
29	Screen & tail cv (T) to manifold	10290029	R1AT-12	1
30	Side conveyor cv (B) to 1st side FCV (PR)	10290030	R2AT-12	1
31	Side conveyors cv (T) to manifold	10290031	R1AT-12	1
32	Side conv 1st FCV (REG) to BHD	10290032	R2AT-12	1
33	Side con 1st FCV (BP) to tee on side con return	10290033	R2AT-12	1
34	Side conv 2nd FCV(PR) to tee on side con return	10290034	R2AT-12	1
35	Side conv 2nd FCV(REG) to BHD	10290035	R2AT-12	1
36	BP 2nd side fc/v to manifold	10290036	R1AT-12	1
37	Diesel line tank to filter	10290037	R1AT-08	1
38	Diesel filter to engine	10290038	R1AT-08	1
39	Feeder FCV to Manifold	10291039	R1AT-12	1
44	Feeder conveyor return to manifold	10290044	R2AT-12	1
45	Feeder conveyor motor bleed to manifold	10290045	R1AT-06	1

## Spare Parts

Ref No.	Description	Part No.	Type	Qty
46	Feeder FCV (REG) to feeder motor drive	10290046	R2AT-12	1
47	BHD to jacking leg up stroke tee	10290047	R2AT-06	2
48	Up stroke tee to jacking leg rams	10290048	R2AT-06	2
49	Down stroke tee to jacking leg rams	10290049	R2AT-06	2
50	BHD of HPCO to double bank aux (P)	10290050	R2AT-08	1
51	Rh side conv ram aux (A) to tee	10290051	R2AT-06	1
52	Rh side conv ram aux (B) to tee	10290052	R2AT-06	1
53	Tee to Rh/Lh side conv ram A up stroke	10290053	R2AT-06	2
54	Tee to Rh/Lh side conv ram B down stroke	10290054	R2AT-06	2
55	Tee to Rh/Lh side conv ram A down stroke	10290055	R2AT-06	2
56	Tee to Rh/Lh side conv ram B up stroke	10290056	R2AT-06	2
57	Main conv ram aux (A) to Rh ram up stroke	10290057	R2AT-06	1
58	Main conv ram aux (A) to Lh ram up stroke	10290058	R2AT-06	1
59	Double bank aux (T) to manifold	10290059	R1AT-08	1
60	Double bank aux HPCO to triple bank aux (P)	10290060	R2AT-08	1
61	Lh side conv ram aux (A) to tee	10290061	R2AT-06	1
62	Lh side conv ram aux (B) to tee	10290062	R2AT-06	1
63	Tail conv fold ram aux (A) to ram up stroke	10290063	R2AT-06	1
64	Tail conv raise & lower ram aux (A) to ram up stroke	10290064	R2AT-06	1
65	Triple bank aux (T) to manifold	10290065	R1AT-08	1
66	Main conveyor motor return to BHD	10290066	R1AT-12	1
67	BHD to main conveyor drive check valve	10290067	R2AT-12	1
68	BHD to screen FCV (PR)	10290068	R2AT-12	1
69	Tee at FCV (BP) to tail conv motor drive	10290069	R2AT-12	1
70	Screen FCV (REG) to screen motor drive	10290070	R2AT-12	1
71	Screen motor return to FCV (BP) tee	10290071	R2AT-12	1
72	Screen motor bleed to manifold	10290072	R1AT-06	1
73	Tail conveyor motor return to BHD oil cooler	10290073	R1AT-12	1
74	Track solenoid (A&B) to track drive & return	10290074	R2AT-12	2
75	Track solenoid (C&D) to track drive & return	10290075	R2AT-12	2
76	Track solenoid return to manifold	10290076	R2AT-16	1
77	Track motors bleed pipes to manifold	10290077	R1AT-08	2
78	BHD to Rh side conveyor motor drive	10290078	R2AT-12	1
79	Rh side conveyor motor return to BHD	10290079	R2AT-12	1
80	Rh side conveyor motor bleed to manifold	10290080	R1AT-06	1
81	BHD to Lh side conveyor motor drive	10290081	R2AT-12	1
82	Lh side conveyor motor return to manifold	10290082	R1AT-12	1
99	Bhd to FCV	10290099	R2AT-12	1
100	Return to Bhd	10290100	R2AT-12	1

## Spare Parts

Ref No.	Description	Part No.	Type	Qty
101	FCV to Motor	10290101	R2AT-12	1
102	Motor to Tee FCV	10290102	R2AT-12	1
103	Bleed to Manifold	10290103	R2AT-06	1
104	Tee to Ram A Front	10290104	R2AT-06	1
105	Tee to Ram B	10290105	R2AT-06	1
114	BHD to tee of Vib Grid Rams	10290039	R2AT-06	2

### Description Main assy hose kit (Shredder)

Part no. 10292540

Ref No.	Description	Part No.	Type	Qty
1	Return manifold to return filter (1)	10290001	R1AT-24	1
2	Return manifold tee to return filter (2)	10290002	R1AT-24	1
3	Oil cooler to return manifold tee	10290003	R1AT-20	1
5	Suction filter to 36cc tandem pump	10292005		1
6	23cc pump to feeder cv (P)	10290006	R2AT-12	1
7	23cc pump to side conveyor cv (P)	10290007	R2AT-12	1
8	36cc pump to main conveyor cv (P)	10290008	R2AT-12	1
9	36cc pump to screen&tail conveyor cv (P)	10290009	R2AT-12	1
10	Feeder cv (T) to manifold	10290010	R2AT-12	1
11	Feeder cv (B) to feeder FCV (PR)	10290011	R2AT-12	1
12	Feeder cv (A) to jacking leg cv (P)	10290012	R2AT-08	1
13	Feeder FCV (BP) to tee on feeder return	10290013	R2AT-12	1
14	Tipping grid solenoid (A) to BHD	10290014	R2AT-06	1
15	Tipping grid solenoid (B) to BHD	10290015	R2AT-06	1
16	Tipping grid solenoid (P) to tee on feeder return	10290016	R2AT-12	1
17	Tipping grid solenoid (T) to manifold	10290017	R1AT-12	1
18	Feeder FCV (REG) to BHD	10290018	R2AT-12	1
19	Jacking leg cv (A&B) to BHD	10290019	R2AT-06	2
20	Jacking leg cv HPCO to BHD	10290020	R2AT-08	1
21	Jacking leg cv (T) to manifold	10290021	R1AT-08	1
22	Oil cooler tee to BHD (return from main)	10290022	R1AT-12	1
23	Oil cooler tee to BHD (return from tail)	10290023	R1AT-12	1
24	Main conveyor cv (B) to BHD	10290024	R2AT-12	1
25	Main conveyor cv (A) to track solenoid (P)	10290025	R2AT-12	1
26	Main conveyor cv (T) to manifold	10290026	R1AT-12	1
27	Screen & tail cv (B) to BHD	10290027	R2AT-12	1
28	Screen & tail cv (A) to track solenoid (P)	10290028	R2AT-12	1
29	Screen & tail cv (T) to manifold	10290029	R1AT-12	1
30	Side conveyors cv (B) to 1st side FCV (PR)	10290030	R2AT-12	1
31	Side conveyors cv (T) to manifold	10290031	R1AT-12	1
32	Side conv 1st FCV (REG) to BHD	10290032	R2AT-12	1
33	Side con 1st FCV (BP) to tee on side conv return	10290033	R2AT-12	1
34	Side con 2nd FCV(PR) to tee on side conv return	10290034	R2AT-12	1

## Spare Parts

Ref No.	Description	Part No.	Type	Qty
35	Side conv 2nd FCV(REG) to BHD	10290035	R2AT-12	1
36	BP 2nd side fc/v to manifold	10290036	R1AT-12	1
37	Diesel line tank to filter	10290037	R1AT-08	1
38	Diesel filter to engine	10290038	R1AT-08	1
39	BHD to tipping grid 50/50 flow divider & tee	S10290039	R2AT-06	2
40	Tipping grid flow divider to grid ram A up stroke	10290040	R2AT-06	1
41	Tipping grid flow divider to grid ram B up stroke	10290041	R2AT-06	1
42	Tipping grid tee to grid ram A down stroke	10290042	R2AT-06	1
43	Tipping grid tee to grid ram B down stroke	10290043	R2AT-06	1
44	Feeder conveyor return to tee	10290044	R2AT-12	1
45	Feeder conveyor motor bleed to manifold	10290045	R1AT-06	1
46	Feeder FCV (REG) to feeder motor drive	10290046	R2AT-12	1
47	BHD to jacking leg up stroke tee	10290047	R2AT-06	2

### Description    Extra Coupling Kit

**Part no.        10293540**

Ref No.	Description	Part No.	Type	Qty
110	Loop Hose	10290110	R1AT-12	1
111	Main conveyor bleed hose	10290111	R1AT-06	1
112	Extra coupling BHD to powerunit BHD	10290112	R1AT-12	1
113	Main conveyor motor return to BHD	10290113	R2AT-12	1

**Electrical Components**

<b>Description</b>	<b>Part No.</b>
Hour Meter	14-05-0005
Ignition Switch	14-05-0010
Ignition Key	14-05-0015
Override Button & Contact Block	14-05-0020
RA...Oil Pressure Relay	14-05-0025
RB...Engine Coolant Relay	14-05-0030
RC...Fuel Relay	14-05-0035
RD...Starter Motor Relay	14-05-0040
RE...Oil Cooler Relay	14-05-0045
ST2...Start Delay Timer	14-05-0050
Track Remote / Manual Switch	14-05-0055
Track Forward / Reverse Switch	14-05-0060
Track Start / Stop Switch	14-05-0065
Stop Box	14-04-3540
Siren	14-05-0075
Beacon	14-05-0100
Manual Handset	14-05-0080
Track Junction Box	14-04-2540
Track Mini Relay	14-05-0090
Tipping Grid Remote Receiver	14-04-1540
Tipping Grid Remote Transmitter	14-05-0105
Tipping Grid Remote Transmitter Battery	14-05-0110
10 Amp Fuse	14-05-0115
15 Amp Fuse	14-05-0120
Strip Link Fuse ( Oil Cooler)	14-05-0125
Strip Link Fuse ( Main Loom)	14-05-0130
Strip Link Fuse Holder	14-05-0135
Radio Control Track Receiver	14-04-5540
Radio Control Track Transmitter	14-05-0070
Radio Control Track Battery Charger	14-05-0085
Radio Control Track Battery	14-05-0095
Negative Battery Lead	14-05-0140
Positive Battery Lead	14-05-0145
Earth Lead	14-05-0150