



---

## Spare part list **PC 10/60 I**

## INDEX

<b>1 INTRODUCTION .....</b>	<b>3</b>
<b>2 VIBRATING CHUTE MT03P.41.00.00BH .....</b>	<b>4</b>
<b>3 MAIN CONVEYOR BELT MT03P.57.00.00BC .....</b>	<b>6</b>
3.1 DRIVING DRUM MT03P.57.04.00.00Bc- .....	11
3.2 REVERSING DRUM MT03B.52.07.00B- .....	12
<b>4 SIDE BELT CONVEYOR MT03P.931.00.00B- .....</b>	<b>13</b>
4.1 DRIVING DRUM MT03P.92.05.00DA .....	15
4.2 REVERSING DRUM MT03P.91.04.00CA .....	15
4.3 SCRAPER MT04P.86.13.00D- .....	16
4.4 ASSEMBLY PARTS – SIDE CONVEYOR .....	16
<b>5 IMPACT CRUSHER I1060.001.00.00B .....</b>	<b>17</b>
5.1 SIDE WALL I I1060.121.00.00 C .....	23
5.1.1 WEAR PLATES I1060.121.02.00 D .....	25
5.2 SIDE WALL II I1060.131.00.00 C .....	26
5.2.1 WEAR PLATES I1060.131.02.00 D .....	27
5.3 UNDER SECTION I1060.01.00.00 CA .....	28
5.4 CRUSHER INLET I1060.061.00.00 C .....	30
5.5 UPPER SWING BEAM I1060.071.00.00 C .....	31
5.5.1 UPPER SWING BEAM *Optionally: Wear plates in “casted steel” .....	32
5.6 LOWER SWING BEAM I1060.101.00.00 C .....	33
5.6.1 LOWER SWING BEAM *Optionally: Wear plates in “casted steel” .....	34
5.7 ROTOR I1060.38.00.00 B- .....	35
5.8 WEAR PLATES CRUSHER OUTLET PC1060I.12.00.00 BF .....	37
5.9 ADJUSTMENT PLATE UNDER CRUSHER OUTLET .....	37
<b>6 DRIVING UNIT .....</b>	<b>38</b>
6.1 CLUTCH HFO-311 & MULTI PUMP MPD-14 .....	40
6.2 HYDRAULIC OIL TANK .....	42
6.3 FUEL TANK .....	43
<b>7 CRAWLER UNIT .....</b>	<b>44</b>
<b>8 MAGNETIC SEPARATOR .....</b>	<b>45</b>
<b>9 HYDRAULIC CHART .....</b>	<b>46</b>
<b>10 ELECTRIC INSTALLATION .....</b>	<b>50</b>
<b>11 REMOTE CONTROL .....</b>	<b>55</b>
<b>12 GENERAL .....</b>	<b>56</b>

# SPAREPART LIST PC 10/60 I

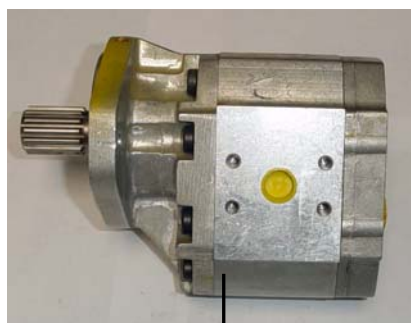
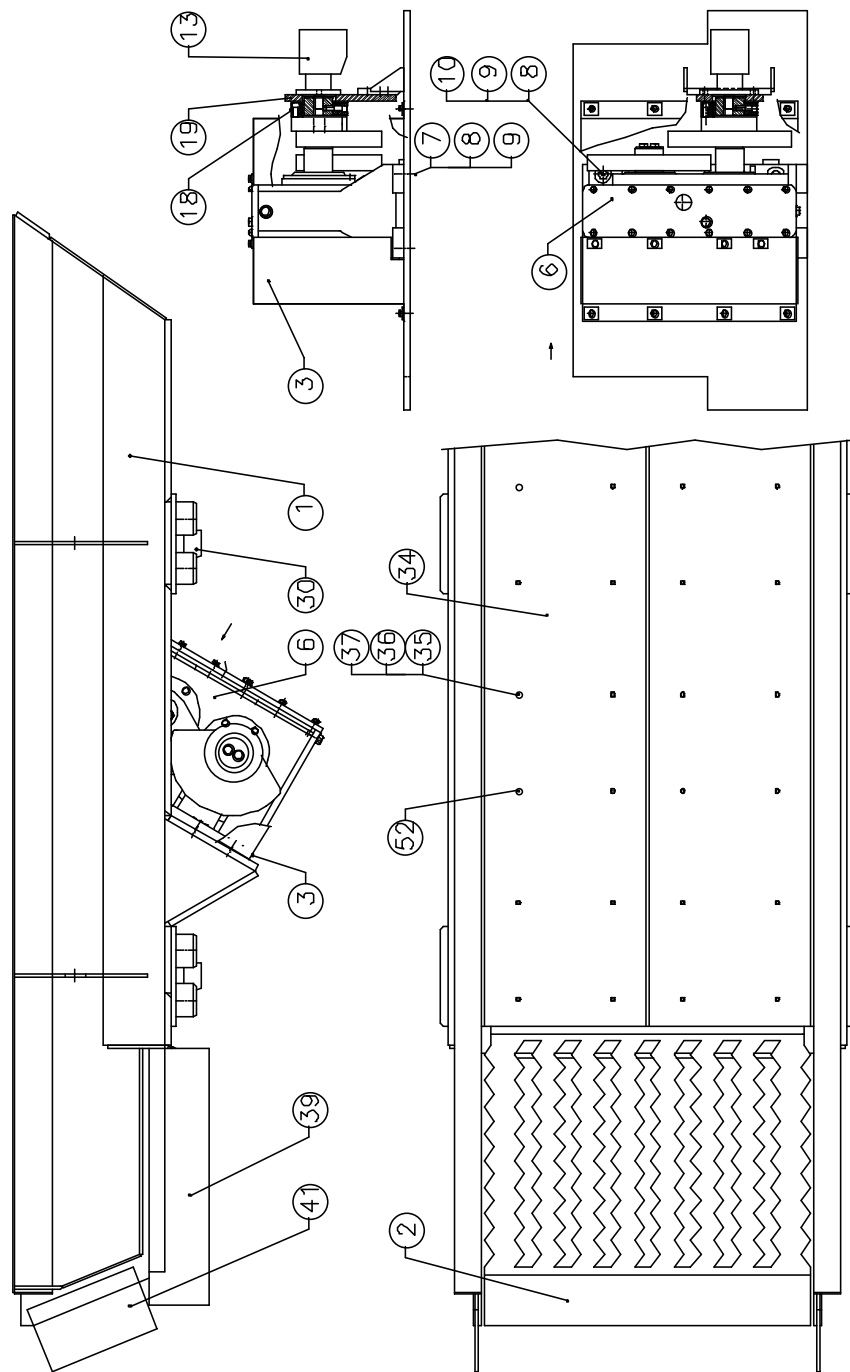
## 1 INTRODUCTION

This is a spare parts list of the Powercrusher PC10/60 I which contains the main parts of this machine.

In order to avoid delays, please indicate first of all serial number of the plant, listed at the front-page and in addition quantity, exact designation and article number. Date of release also listed on the front page.

# SPAREPART LIST PC 10/60 I

## 2 VIBRATING CHUTE MT03P.41.00.00Bh



13



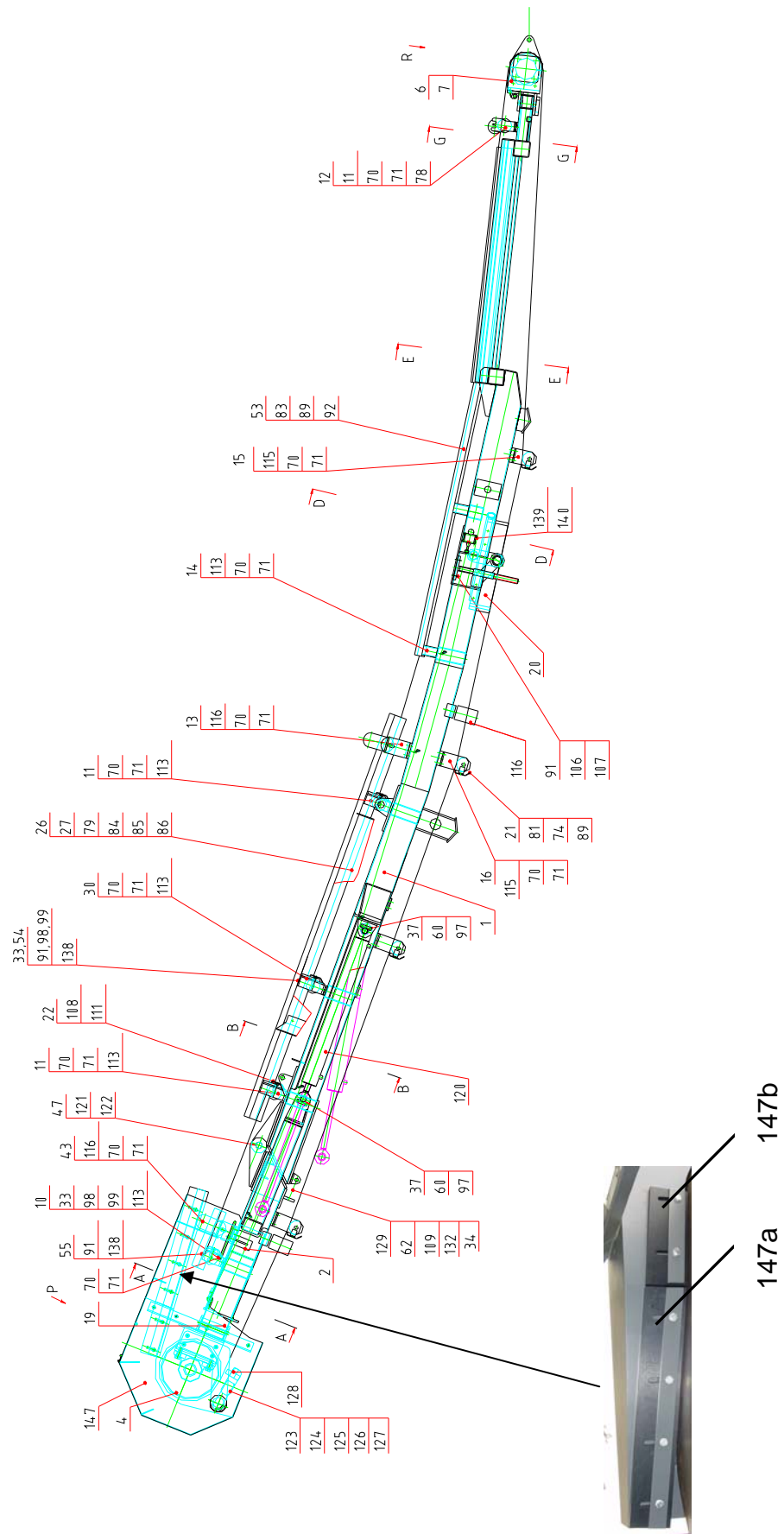
18

# SPAREPART LIST PC 10/60 I

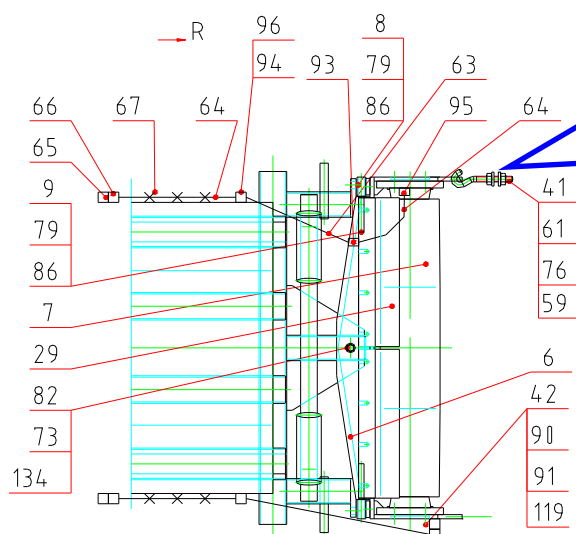
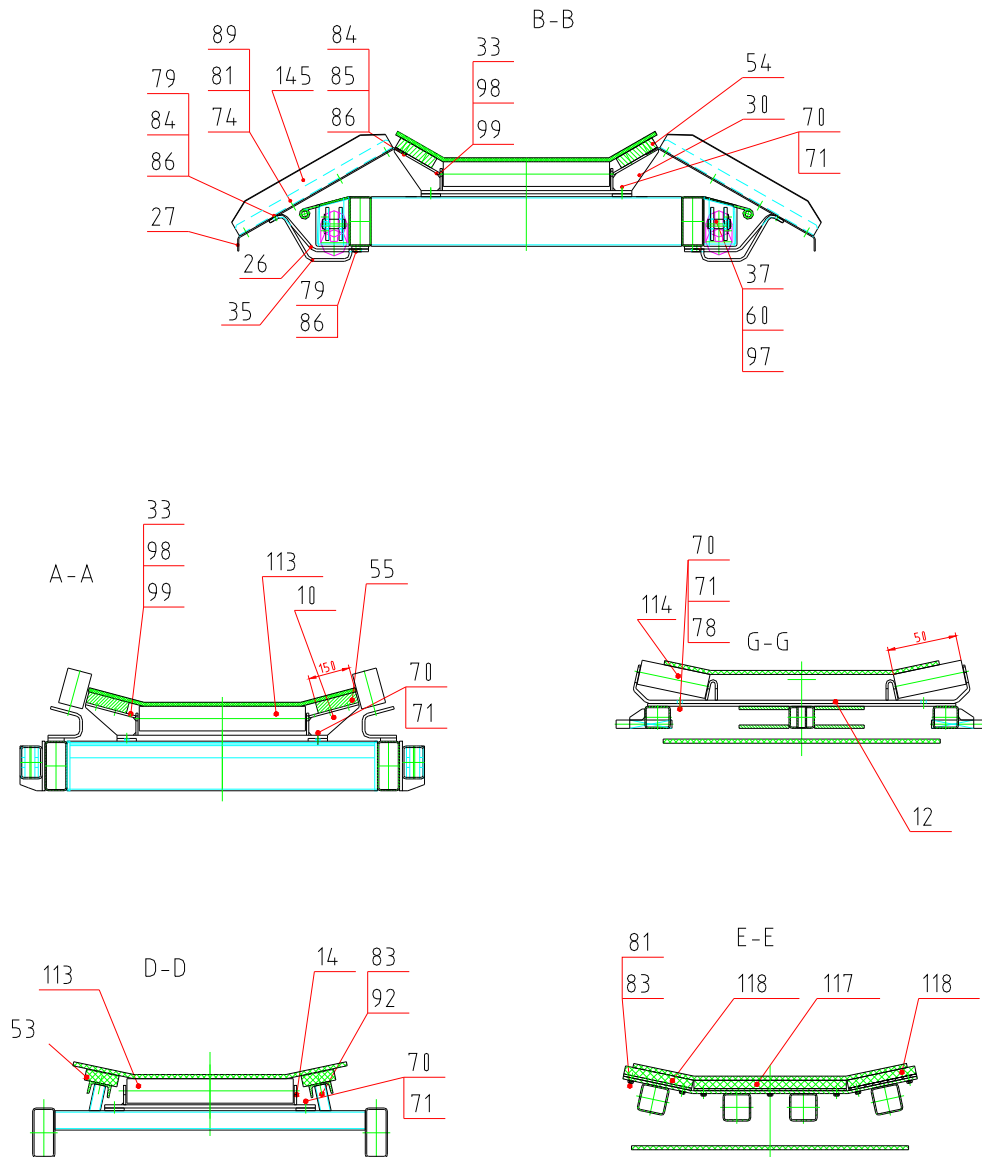
POS.	QUANT.	DESIGNATION	ARTICLE NO.
1	1	VIBRO FRAME	MT03P.41.01.00B-
2	1	ROST	MT03B.40.021.90B-
3	1	COVER	KM03P.42.03.00Ba
6	1	VIBRO GEARBOX	VG03.00.00.00Ba
7	6	BOLT	SKSCHM24/100/10.9
8	16	NUT	SKM24/934/8
9	16	WASHER	SCHEIBEHVM24
10	2	BOLT	KM03P.41.10.00E-
13	1	HYDRAULIC MOTOR	HYMZR3050M3AAP
18	1	FLEXIBLE CLUTCH	KUPCF180PROFIL
19	1	HOLDER	MT03P.41.19.00E-
30	4	RUBBER HOLDER	MT03P.41.30.00E-
34	2	WEAR PLATE	MT03P.41.34.00E-
35	32	BOLT	SKSCHSKM12/35/10.9
36	32	WASHER	SCHEIBEHVM12
37	32	NUT	SKM12/985/8
39	2	RUBBER L=875mm	GUMBS10/180
41	2	RUBBER L=340mm	GUMBS10/200
	4	RUBBER BLOCKS	GUMPU200VIB
	8	SPRINGS	FEDDRUCK250
	4	O-RING F. GEARBOX	ORING72X3
	4	SEALING F. GEARBOX	WDR85/110/13
	4	BEARINGS F. GEARBOX	LAG22315
	1	FILTER F. GEARBOX	HYFILBFP4G10

# SPAREPART LIST PC 10/60 I

## 3 MAIN CONVEYOR BELT MT03P.57.00.00Bc



# SPAREPART LIST PC 10/60 I



41

# SPAREPART LIST PC 10/60 I

POS.	QUANT.	DESIGNATION	ARTICLE NO.
4	1	DRIVING DRUM	MT03P.57.04.00.00Bb-
6	1	DRUM HOLDER	MT03P.52.06.00 C
7	1	REVERSING DRUM	MT03B.52.07.00 D
8	2	HOLDER	MT03B.52.08.00 E
9	1	HOLDER	MT03B.52.09.00 D
10	1	PULLEY CARRIER 1	MT03B.52.10.00 C
11	2	PULLEY CARRIER 2	MT03B.52.11.00 C
12	1	PULLEY CARRIER 3	MT03B.52.12.00 C
13	2	HOLDER	MT03B.52.13.00 D
14	2	PULLEY CARRIER	MT03B.51.14.00 D
15	2	HOLDER	MT03B.52.15.00 D
16	6	HOLDER	MT03P.50.16.00 D
19	2	HOLDER	MT03B.52.19.00 D
20	1	BELT CLEANER	MT03P.56.20.00 E
21	4	COVER	MT03B.52.21.00 D
22	4	COVER	MT03B.52.22.00 D
23	2	BOLT M24X400	MT03B.52.23.00 E
24	2	FORK	MT03B.52.24.00 E
25	2	PIN	MT03P.50.25.00 E
26	4	HOLDER	MT03B.52.26.00 D
27	2	PLATE	MT03B.53.27.00 Da
29	2	CLEANING PLATE	MT03B.52.29.00 D
30	1	PULLEY CARRIER IV	MT03B.52.30.00 C
33	4	PLATE	MT03B.52.33.00 E
34	2	PIN 22	MT03B.52.34.00 E
35	2	LEVEL	MT03B.53.35.00 D
37	2	PIN Ø34/82	MT03B.53.37.00 E
41	2	BOLT	252.20.00.5901
42	2	COVER	MT03P.55.42.00 E
43	2	HOLDER	MT03B.52.43.00 D
47	2	PIN	MT03B.53.47.00 E
53	2	ROBALON	ROB40/120/1730
54	2	ROBALON	ROB40/150/2650 + ROB40/150/1100
55	2	ROBALON	ROB40/150/850
59	4	WASHER	MT03B.52.59.00 E
60	4	HOLDER	MT03B.53.60.00 E
61	4	NUT M20	SKM20/934/8
62	2	WASHER 23	SCHEIBEM24/125
65	2	GREASING HEAD KM 10X1	SCHMIERNH1M10/1
70	34	BOLT M16X40	SKSCHM16/40/8.8/933
71	34	WASHER 17	SCHEIBEM16/125
72	2	NUT M20	SKM20/985/5
73	6	WASHER 25	SCHEIBEM24/125
74	8	WASHER 10.5	SCHEIBEM10DIN125



# SPAREPART LIST PC 10/60 I

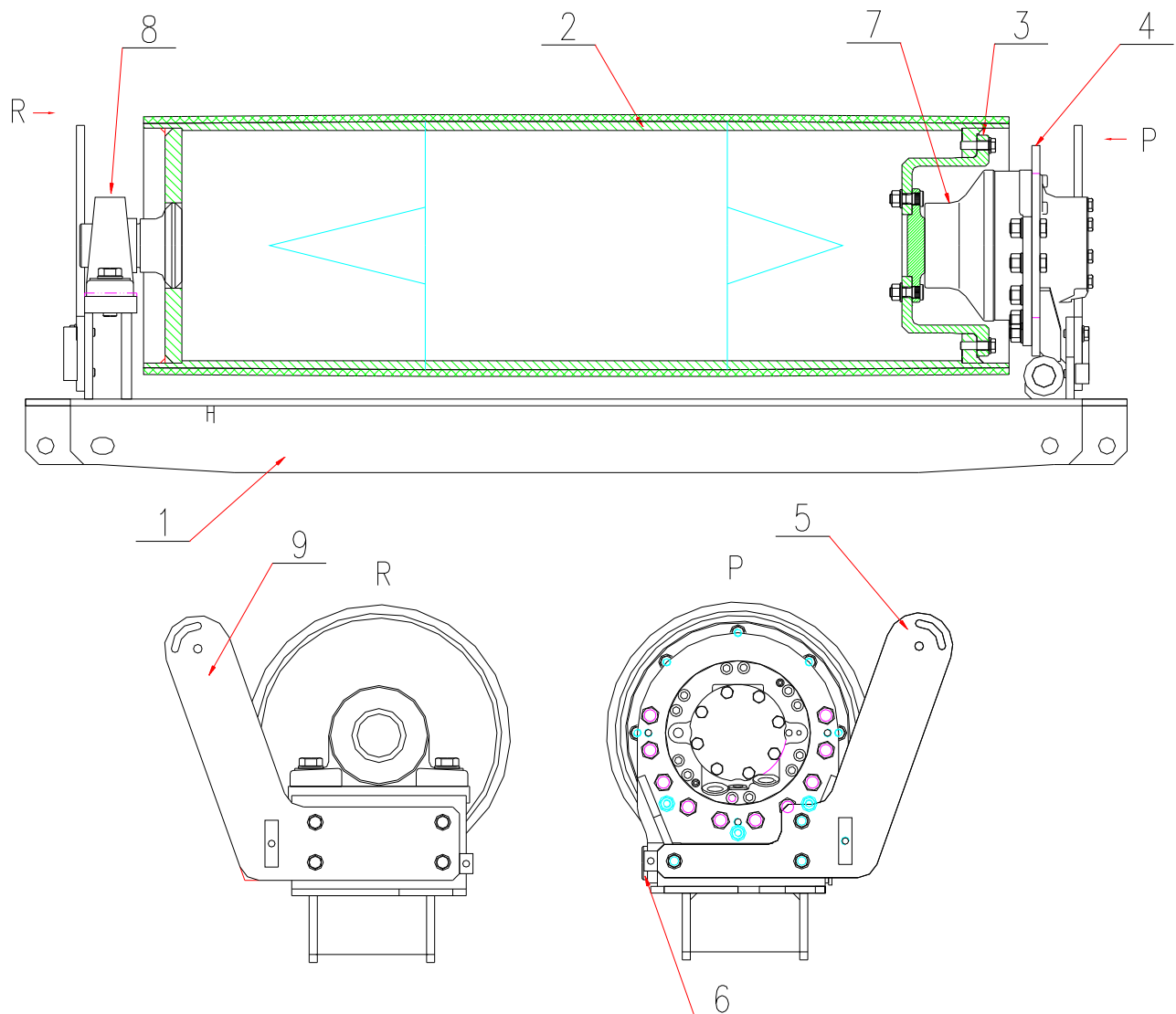
75	6	NUT	SKM24/934/8
76	10	WASHER	SCHEIBEM20/125
78	2	NUT	SKM16/934/8
79	20	BOLT	SKSCHM12/35/8.8/933
80	2	BOLT	SKSCHM20/220/8.8/931
81	72	BOLT	SKSCHM10/25/8.8/933
82	1	BOLT	SKSCHM24/150/8.8/931
83	74	WASHER	SCHEIBEM10DIN127
84	19	NUT	SKM12/934/8
85	12	BOLT	ZYSCHM12/35/8.8/912
86	35	WASHER	SCHEIBEM12/125
88	2	COTTER PIN	SPLINT6,3/45/94
89	36	NUT	SKM10/934/8.8
90	8	BOLT	SKSCHM16/90/8.8/931
91	28	NUT	SKM16/985/8
92	18	BOLT	ZYSCHM10/35/8.8/912
97	4	BOLT	ZYSCHM10/16/8.8/912
98	4	BOLT	SKSCHM8/12/8.8/933
99	4	WASHER	SCHEIBEM8/125
105	12	NUT	SKM16/934/8
106	16	BOLT	SKSCHM16/50/8.8/933
107	14	WASHER	SCHEIBEM16/125
108	9	BOLT	SKSCHM12/20/8.8/933
109	2	COTTER PIN	SPLINT5/32
111	8	WASHER	SCHEIBEM12/125
112	1	RIP-STOP BELT	GURTTR1000/21050
113	6	ROLLER	ROLTR89/600
114	2	ROLLER	ROLTR89/250
115	4	ROLLER	ROLTR89/1150
116	8	ROLLER	ROLSF89/132
117	1	SANPRO PLATE	GUMSA550/1500
118	2	SANPRO PLATE	GUMSA250/1500
119	2	BEARING	LAGUCFC212
120	2	HYDR. CYLINDER	HYZY80/45/800R
121	2	WASHER	SCHEIBEM40/125
122	2	COTTER PIN	SPLINT8/63/94
123	2	ROSTA	ROSTASANNSE27
124	2	ROSTA HOLDER	ROSTAHALTSE27
125	2	BOLT	SKSCHM12/50/8.8/933
126	2	NUT	SKM12/934/8
127	2	WASHER	SCHEIBEM12/125
128	1	STRIPPER	GUMKWA1000
129	2	NUT	SKM24/6331/8
130	2	WASHER	SCHEIBEM24/125
132	2	BOLT WITH EYE	A-SCHM24/180
134	1	NUT	SKM24/985/8
135	1	WASHER	SCHEIBEM12/125

## SPAREPART LIST PC 10/60 I

147	1	COVER - ASSEMBLY	MT03B.53.147.00B
147a	2	ROBALON	MT03P.57.147.03D
147b	2	ROBALON	MT03P.57.147.02E
	1	MAGNETIC SEPARATOR	MAGNET503HY

# SPAREPART LIST PC 10/60 I

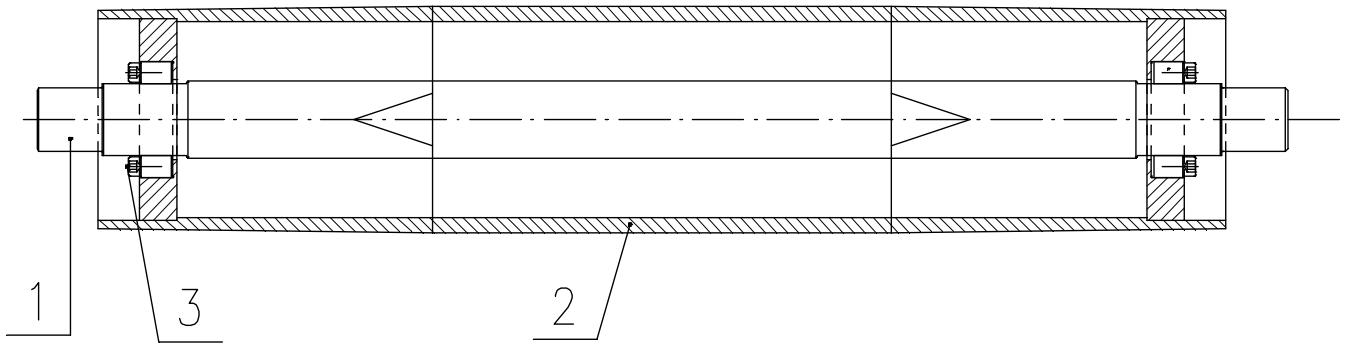
## 3.1 DRIVING DRUM MT03P.57.04.00.00Bc-



POS.	QUANT.	DESIGNATION	ARTICLE NO.
1	1	DRUM HOLDER	MT03P.57.04.01.00 Bb
2	1	DRUM – WELDMENT	MT03P.57.04.02.00 B
3	1	PLATE 3	MT03P.57.04.03.00 Ea
4	1	HOLDER OF MOTOR	PC1275.05.041.04C
5	1	HOLDER OF SCRAPER 1	MT03P.57.04.05.00 D
6	1	PIN Ø35	MT03P.57.04.06.00 E
7	1	HYDR. MOTOR	HYMMSE05V
8	1	BEARING	LAGUCP213
9	1	HOLDER OF SCRAPER 2	MT03P.57.04.09.00 D

# SPAREPART LIST PC 10/60 I

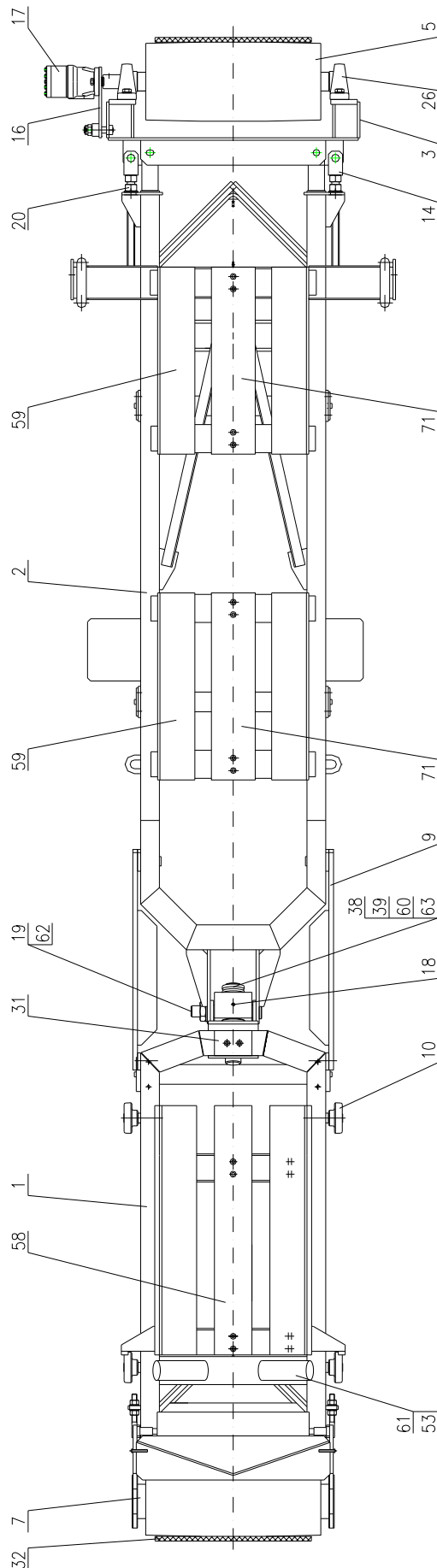
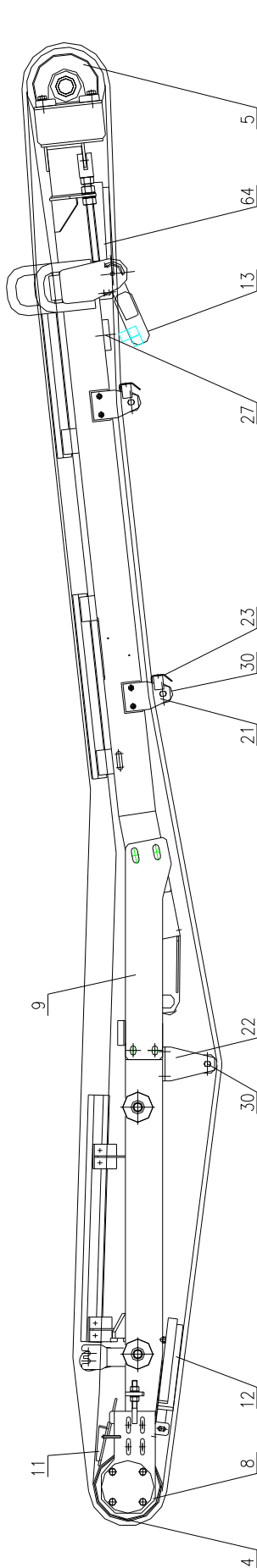
## 3.2 REVERSING DRUM MT03B.52.07.00B-



POS.	QUANT.	DESIGNATION	ARTICLE NO.
1	1	SHAFT	MT03B.52.07.01 D-
2	1	DRUM	MT03B.52.07.02 D-
3	2	LOCK RING	LAGRF70/110

# SPAREPART LIST PC 10/60 I

## 4 SIDE BELT CONVEYOR MT03P.931.00.00B-

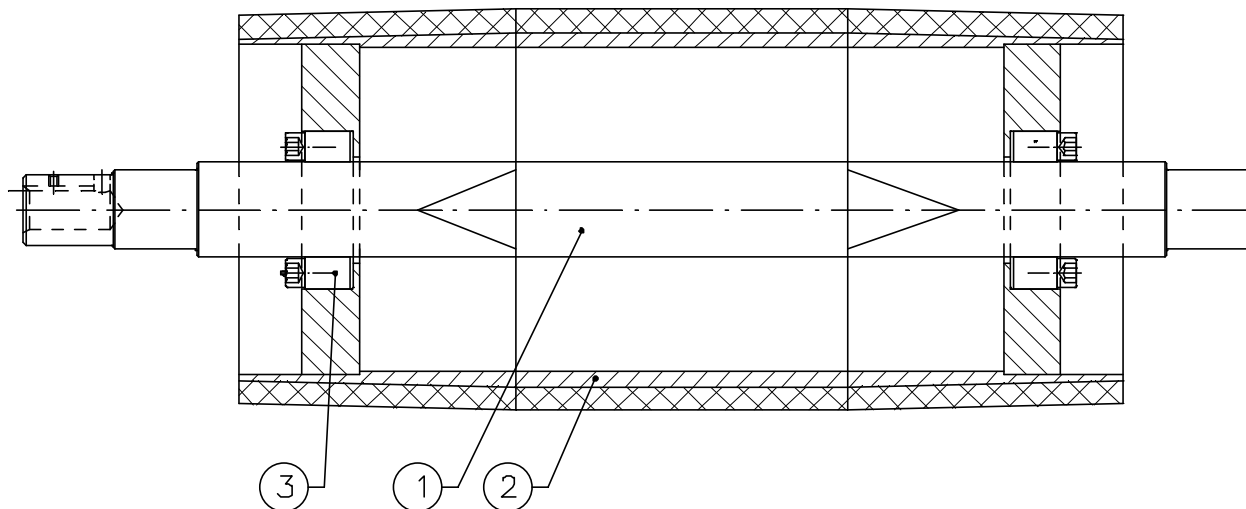


# SPAREPART LIST PC 10/60 I

POS.	QUANT.	DESIGNATION	ARTICLE NO.
3	1	DRIVING DRUM HOLDER	MT03P.921.03.00B-
4	1	REVERSING DRUM	MT03P.91.04.00Ca
5	1	DRIVING DRUM	MT03P.92.05.00Da
7	2	BEARING	LAGUCFC210
8	2	REVERSING DRUM HOLDER	MT03P.921.08.00C-
9	2	HOLDER	MT03P.931.09.00C-
10	4	PULLEY	MT04P.86.10.00Eb
11	1	DRUM SCRAPER	MT03P.931.11.00C-
12	1	RUBBER OF SCRAPER	ROB15/50/380
	1	RUBBER OF SCRAPER	ROB15/50/395
13	1	BELT SCRAPER COMPLETE	MT04P.86.13.00D-
14	2	FORK	MT03P.90.14.00E-
16	1	TORQUE SUPPORT	MT04P.86.04.03D-
17	1	HYDRAULIC MOTOR	HYM315/25OMP0617
18	1	YOKE	MT04P.86.18.00Da
19	1	PIN	MT04P.86.19.00Ea
20	2	ADJUSTING SPINDLE	MT03P.93.20.00Ea
21	4	ROLLER HOLDER	MT04P.86.21.00Da
22	2	ROLLER HOLDER	MT04P.86.22.00Da
23	2	COVER	MT03P.931.23.00D-
26	2	BEARING	LAGUCP210
27	1	ROBALON	ROB20/100/540
30	3	ROLLER	ROLTR63/600
31	1	ROBALON	ROB20/120/80
32	1	BELT	GURT500/10250
38	1	WASHER	LAGMB10
39	2	NUT	LAGKM10
53	2	ROLLER	ROLTR63/165
58	3	ROBALON	ROB20/120/805
59	4	ROBALON	ROB20/120/600
60	2	RING	MT04P.86.60.00E-
61	1	ROLLER HOLDER	MT03P.931.61.00C-
62	2	SLEAVE	LAGMB4030DU
63	2	SLEAVE	LAGMB5030DU
64	1	RUBBER OF SCRAPER	ROB15/50/380
	1	RUBBER OF SCRAPER	ROB15/50/395
71	2	ROBALON	ROB20/140/600

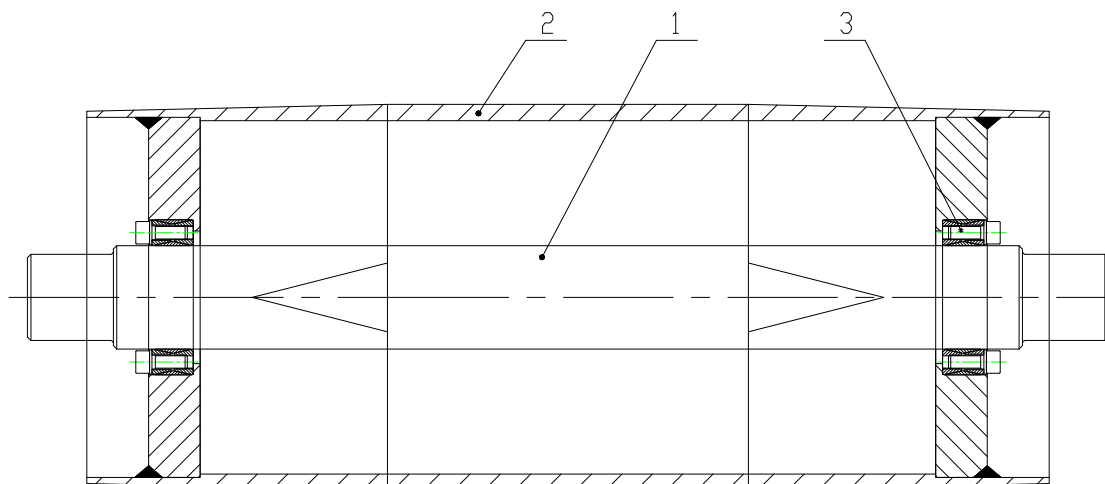
# SPAREPART LIST PC 10/60 I

## 4.1 DRIVING DRUM MT03P.92.05.00Da



POS.	QUANT.	DESIGNATION	ARTICLE NO.
1	1	SHAFT	MT03P.92.05.01 B
2	1	DRUM	MT03P.91.05.20 C
3	2	LOCK RING	LAGRF90/110

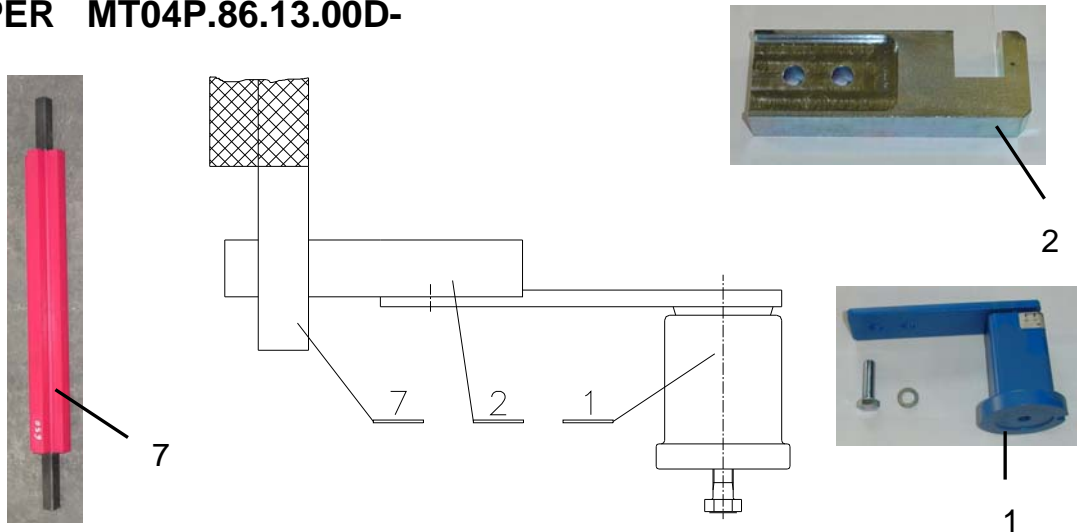
## 4.2 REVERSING DRUM MT03P.91.04.00Ca



POS.	QUANT.	DESIGNATION	ARTICLE NO.:
1	1	SHAFT	MT03P.91.04.10D
2	1	DRUM	MT03P.91.05.20Ca
3	2	LOCK RING	LAGRF60/90

# SPAREPART LIST PC 10/60 I

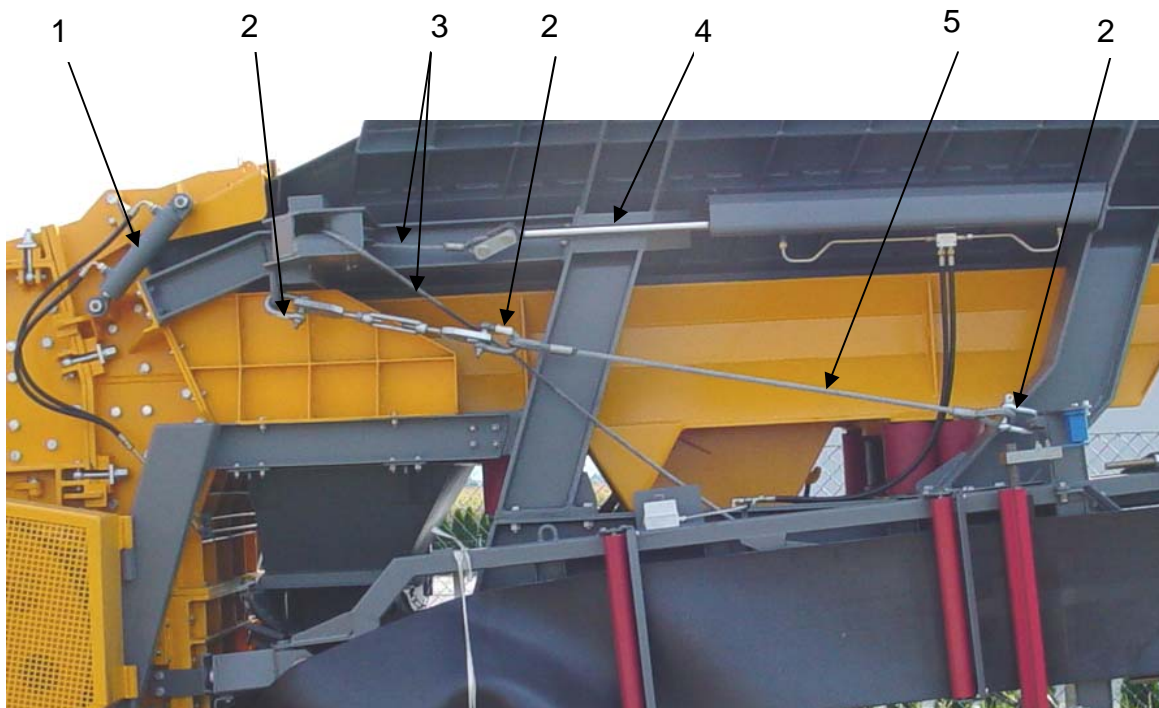
## 4.3 SCRAPER MT04P.86.13.00D-



POS.	QUANT.	DESIGNATION	ARTICLE NO.
1	2	ROSTA ELEMENT	ROSTASPANNSE27
2	2	HOLDER OF ROSTA	ROSTAHALTSE27
7	1	SCRAPER BAR	GUMKWA500

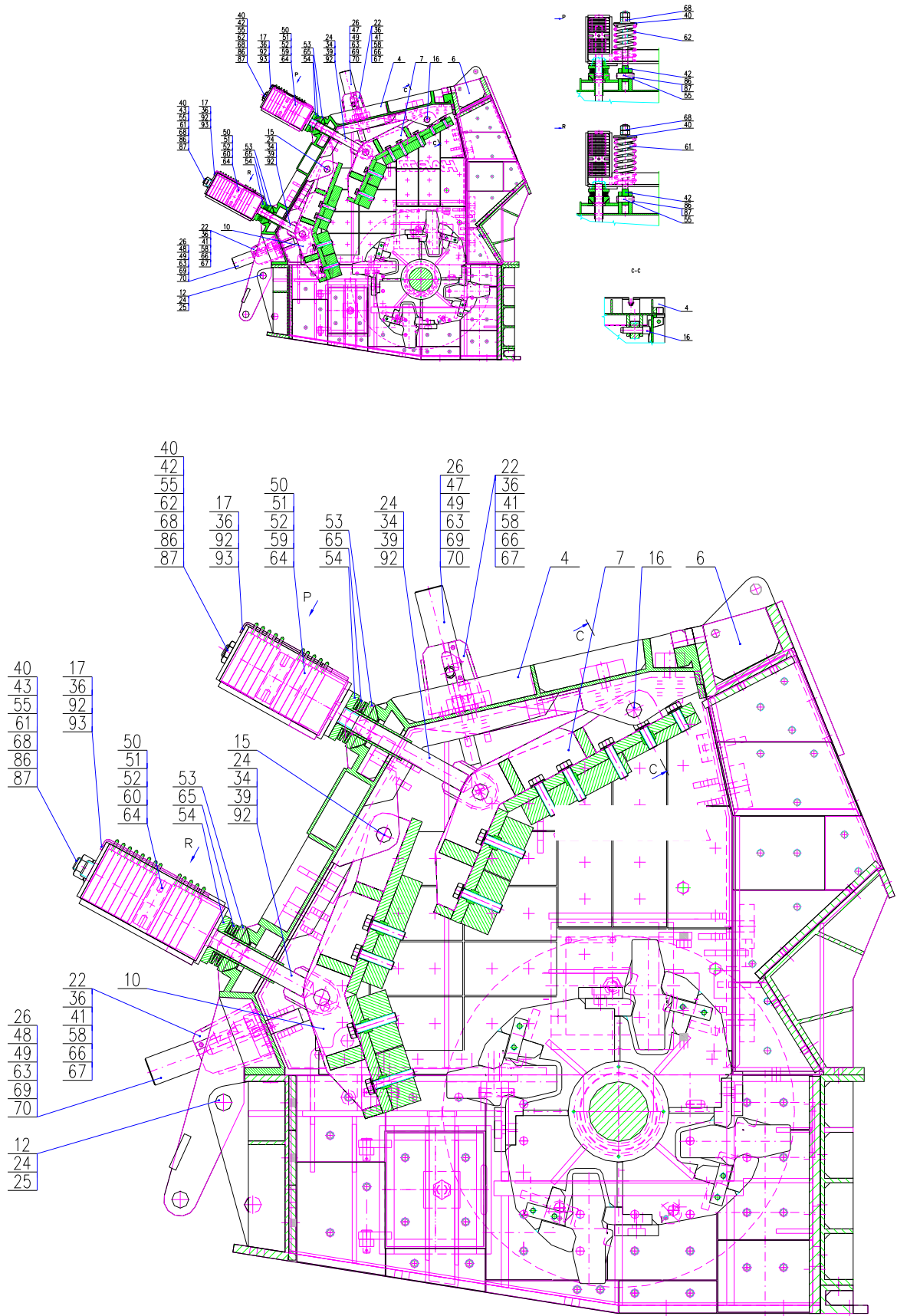
## 4.4 ASSEMBLY PARTS – SIDE CONVEYOR

POS.	QUANT.	DESIGNATION	ARTICLE NO.
1	1	HYDRAULIC CYLINDER	HYZY60/36/200R
2	3	SCHÄKEL	SCHÄKELM24TYPC
3	1	STEEL CABLE	MT03P.951.16.00E
4	1	HYDRAULIC CYLINDER	HYZY60/32/800K
5	1	STEEL CABLE	MT03P.951.15.00E

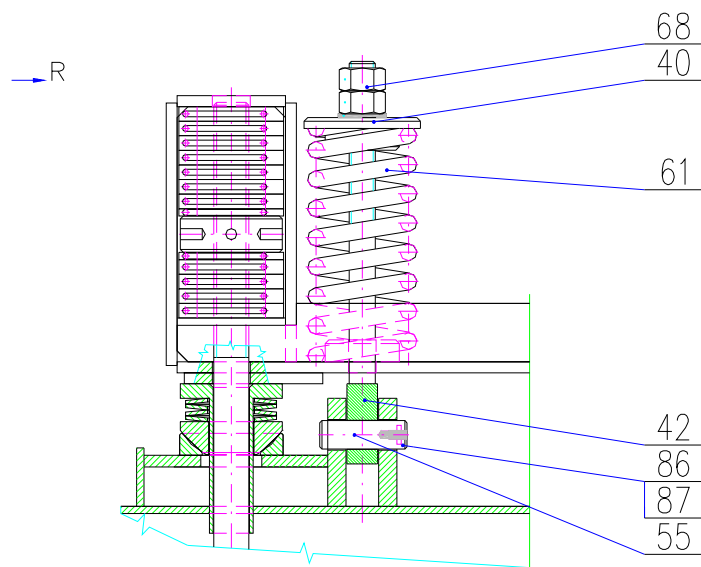
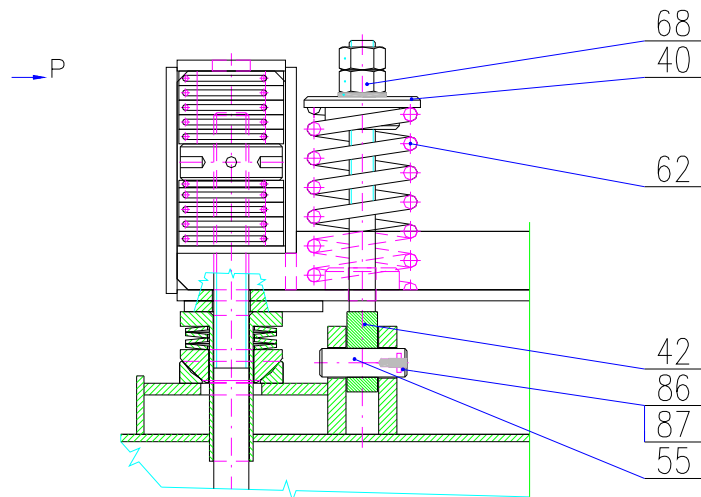




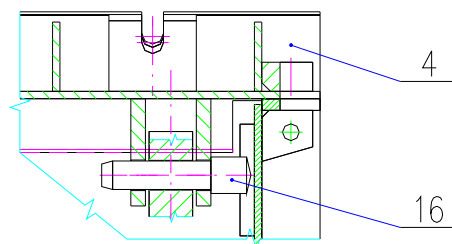
## 5 IMPACT CRUSHER I1060.001.00.00B



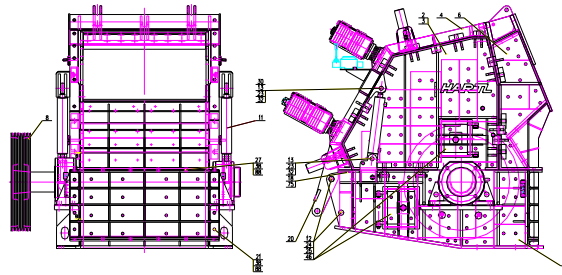
# SPAREPART LIST PC 10/60 I



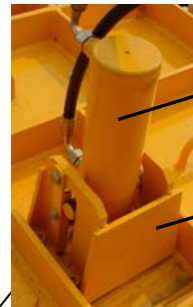
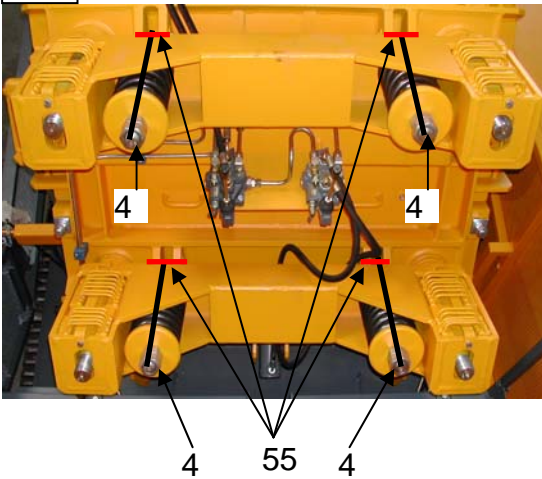
C-C



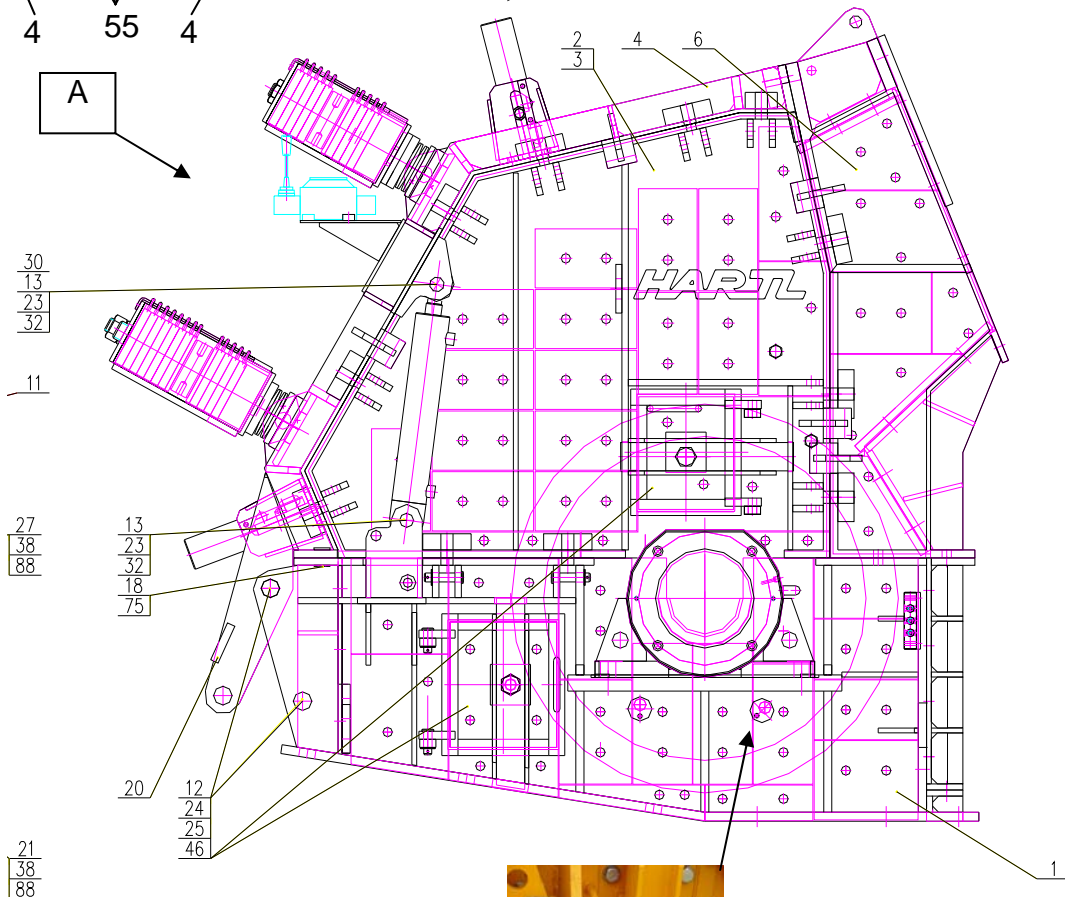
# SPAREPART LIST PC 10/60 I



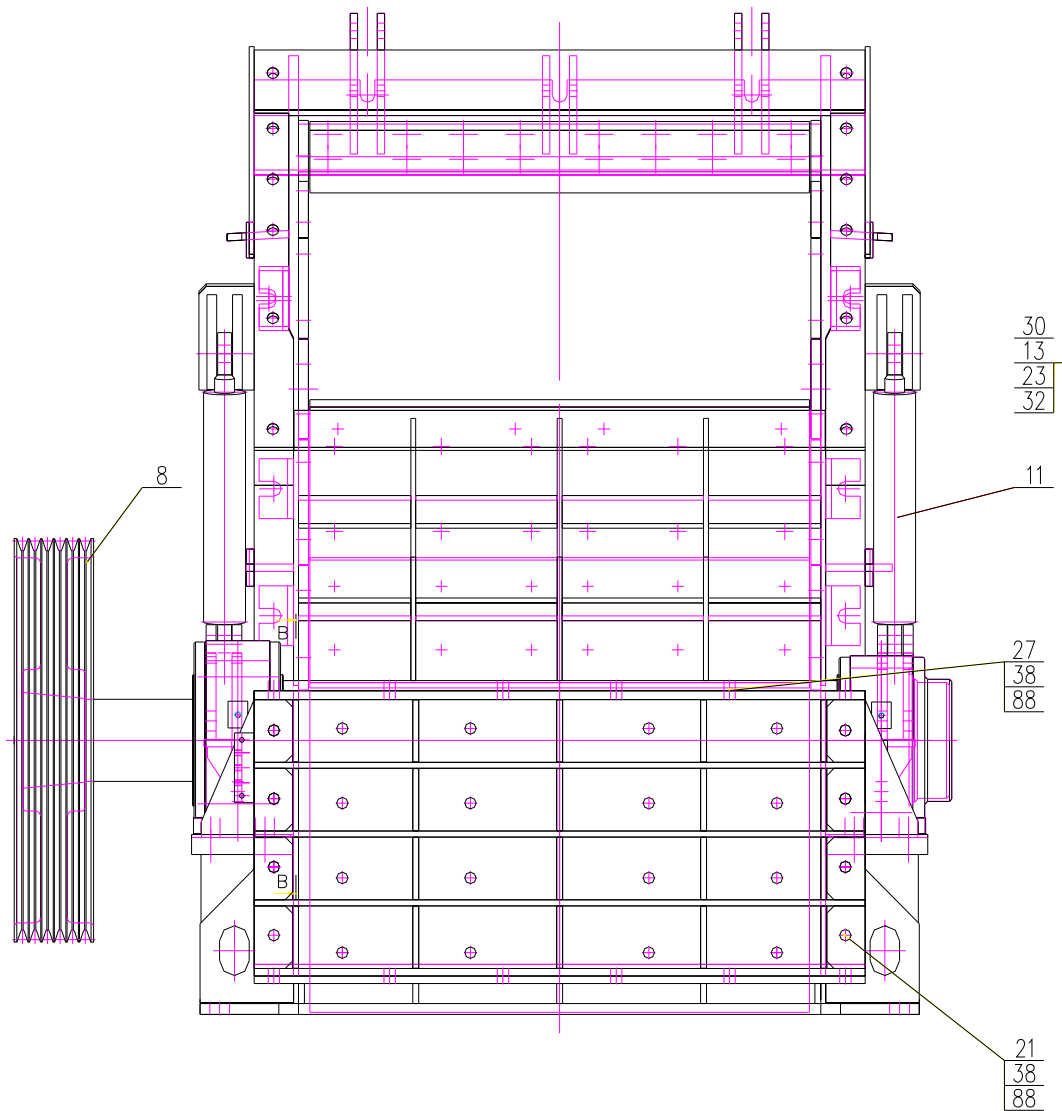
A



A



# SPAREPART LIST PC 10/60 I



# SPAREPART LIST PC 10/60 I

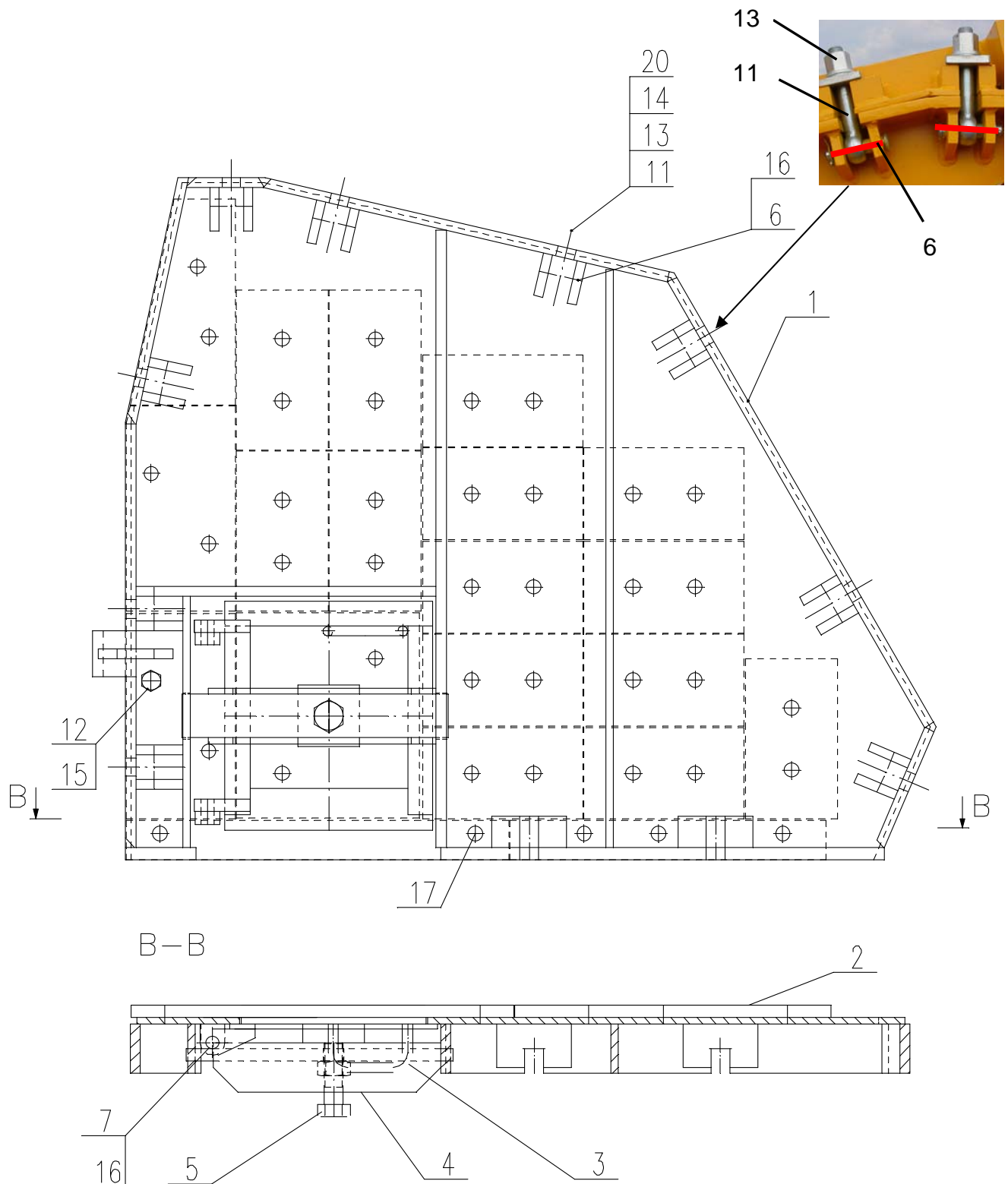
POS.	QUANT.	DESIGNATION	ARTICLE NO.
1	1	LOWER PART	I1060.01.00.00 Ca
2	1	SIDE WALL I	I1060.121.00.00 C
3	1	SIDE WALL II	I1060.131.00.00 C
6	1	CRUSHER INLET	I1060.061.00.00 C
7	1	UPPER SWING BEAM	I1060.071.00.00 C
8	1	ROTOR	I1060.38.00.00 B
10	1	LOWER SWING BEAM	I1060.101.00.00 C
11	2	HYDRAULIC CYLINDER	HYZY70/40/350R
12	4	PIN	I1060.00.00.12 E
13	4	PIN	I1060.00.00.13 Ea
15	2	PIN	I1060.15.00.00 E
16	2	PIN	I1060.16.00.00 E
17	4	SECURING PLATE	I1060.17.00.00 D
18	1	INDUKTIV LIMIT SWITCH	NOTAUSÜBERWACH
21	8	BOLT	SKSCHM20/100/10.9/933
22	2	LOCKING PLATE	I1060.22.00.00 E
23	4	COTTER PIN	SPLINT8/50/94
24	8	WASHER	SCHEIBEHVM45
25	2	COTTER PIN	SPLINT8/80/94
26	2	COTTER PIN	SPLINT5/32/94
27	6	BOLT	SKSCHM20/60/10.9/933
32	4	WASHER	SCHEIBEM36/125
34	4	PIN	I1060.07.00.07 E
36	8	BOLT	SKSCHM10/12/8.8/933
38	16	NUT	SKM20/934/8
39	4	EYE	I1060.39.00.00 D
40	4	PLATE	I1060.40.00.00 E
41	2	BRACKET OF HYDR. CYLINDER	I1270.41.00.00 Cc
42	2	UPPER EYE	I1060.42.00.00 D
43	2	LOWER EYE	I1060.43.00.00 D
46	4	SECURING OF DOOR	4-980.015.278. E
47	1	EXTENSION 1	I1060.471.00.00 E
48	1	EXTENSION 2	I1060.48.00.00 E
49	2	PIN	I1060.49.00.00 E
50	4	ADJUSTING DISC M48	I1060.50.00.00
51	52	DISTANCE PLATE	I1060.51.00.00 D
52	4	DISTANCE PLATE 1	I1060.52.00.00 D
53	4	SPHERICAL BEARING	I1270.53.00.00 E
54	4	GUIDE	I1060.54.00.00 E
55	4	PIN	I1060.55.00.00 Ea
58	2	COVER RUBBER	I1060.58.00.00 E
61	2	SPRING LOWER SWING BEAM	FEDDRUCK320
62	2	SPRING UPPER SWING BEAM	FEDDRUCK250
63	2	HYDRAULIC CYLINDER	HYZY63/36/150R3/8
64	4	PROTECTION-RUBBER FOR SPRING	GUMRS06/160/260
65	16	SPRING	FEDER125
66	6	WASHER	SCHEIBEM12/127
67	6	BOLT	ZYSCHM12/35/8.8/912
68	8	NUT	SKM36/934/8

## SPAREPART LIST PC 10/60 I

70	2	WASHER	SCHEIBEM16/125
87	8	BOLT	SKSCHM10/30/8.8/933
88	14	WASHER	SCHEIBEHVM20
92	4	COTTER PIN	SPLINT10/80/94
93	4	FIXING PLATE	I1060.93.00.00 D
94	4	WASHER	SCHEIBEM10/127
100	10	BOLT	MT03P.00.24.00E

# SPAREPART LIST PC 10/60 I

## 5.1 SIDE WALL I I1060.121.00.00 C



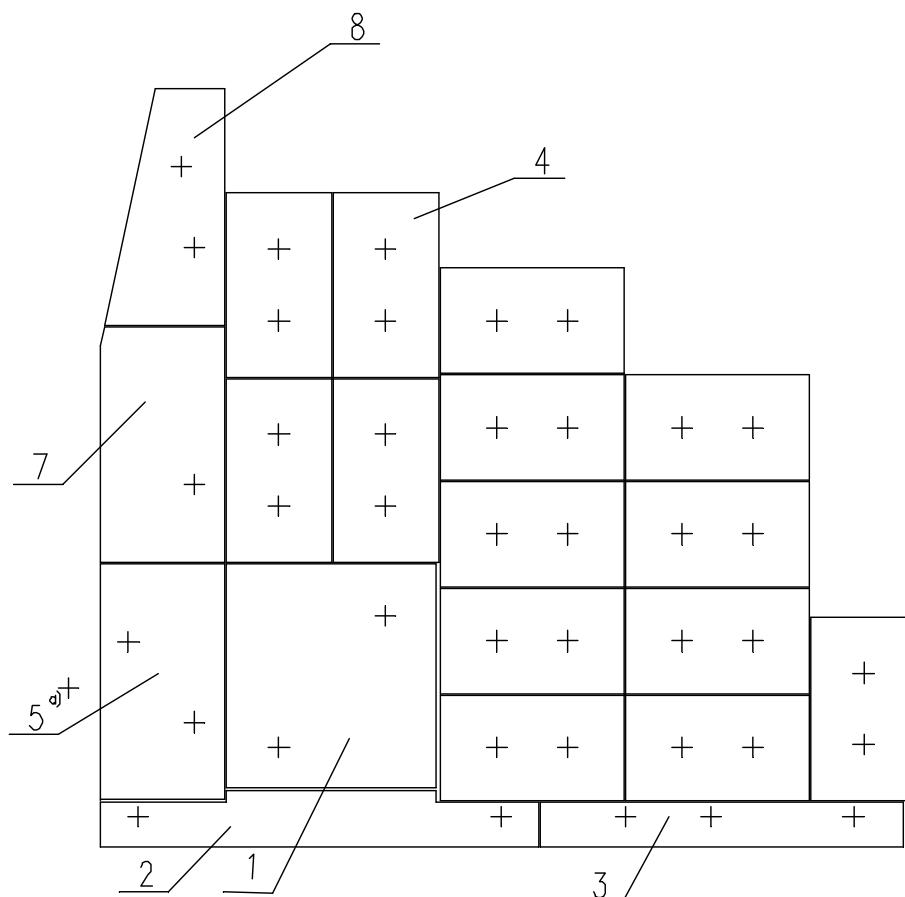
# SPAREPART LIST PC 10/60 I

POS.	QUANT.	DESIGNATION	ARTICLE NO.
2	1	WEARPLATES COMPLETE	I1060.121.02.00 D
3	1	DOOR	I1060.021.03.00 C
4	1	LOCKING BAR	I1060.02.04.00 E
5	1	BOLT	SKSCHM30/100/8.8/931
6	9	PIN	I1060.01.00.63 E
7	2	PIN	I1060.01.00.62 E
11	9	EYE BOLT	A-SCHM24/160
12	36	BOLT	SKSCHM20/35/10.9/933
13	9	NUT	SKM24/6331/8
14	9	HV-WASHER	SCHEIBEHVM24
15	41	HV-WASHER	SCHEIBEHVM20
16	5	COTTER PIN	SPLINT5/32/94
18	5	BOLT	ZYSCHM20/35/10.9/912
20	9	HV-WASHER	I1060.01.08.00 E-



# SPAREPART LIST PC 10/60 I

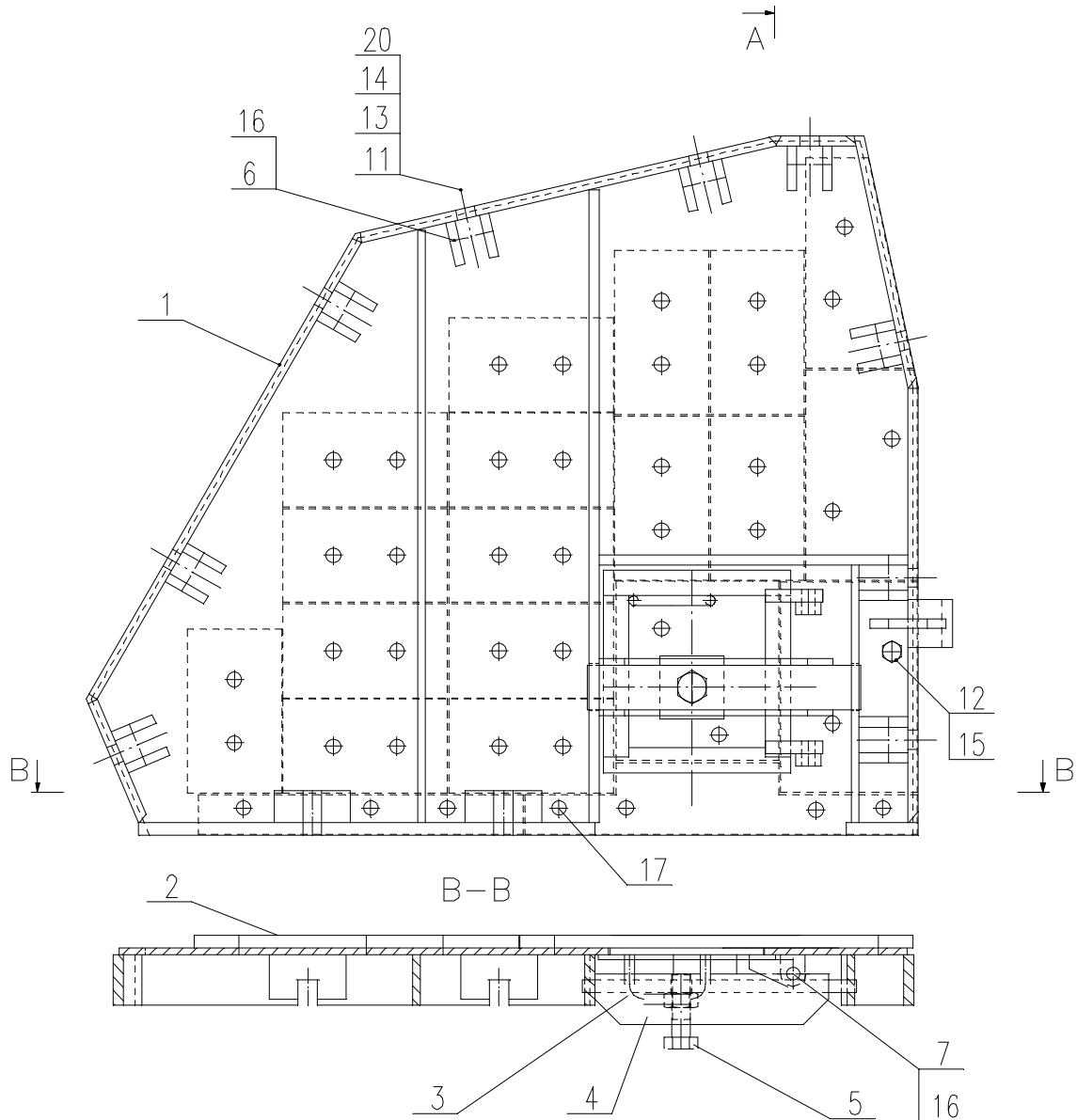
## 5.1.1 WEAR PLATES I1060.121.02.00 D



POS.	QUANT.	DESIGANTION	ARTICLE NO.
1	1	WEAR PLATE	I1060.021.02.01 E
2	1	WEAR PLATE	I1060.02.02.02 Db
3	1	WEAR PLATE	I1060.02.02.03 Da
4	14	WEAR PLATE	I1060.02.02.04 E
5	1	WEAR PLATE	I1060.021.02.05 E
7	1	WEAR PLATE	I1060.121.02.07 E
8	1	WEAR PLATE	I1060.12.02.08 E

# SPAREPART LIST PC 10/60 I

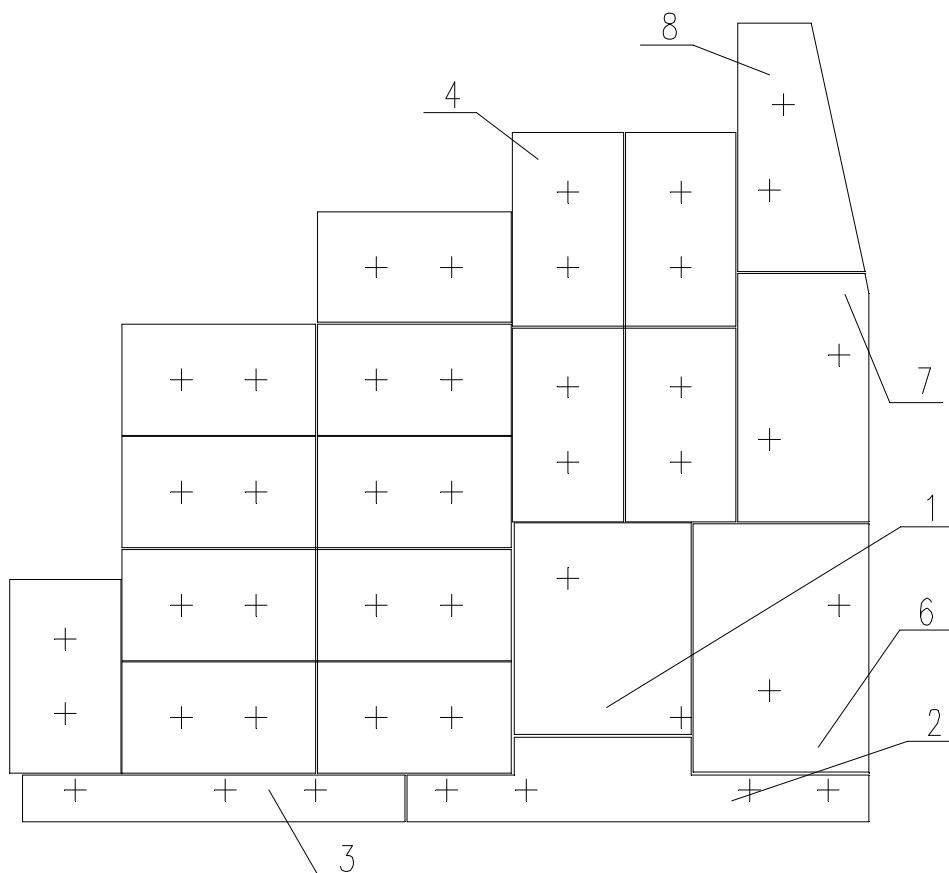
## 5.2 SIDE WALL II I1060.131.00.00 C



POS.	QUANT.	DESIGANTION	ARTICLE NO.
2	1	WEARPLATES COMPLETE	I1060.131.02.00 D
3	1	DOOR	I1060.031.03.00 C
4	1	LOCKING BAR	I1060.03.04.00 E
5	1	BOLT	SKSCHM30/100/8.8/931
6	9	PIN	I1060.01.00.63 Ea
7	2	PIN	I1060.01.00.62 Ea
11	9	EYE BOLT	A-SCHM24/180
12	36	BOLT	SKSCHM20/35/10.9/933
13	9	NUT	SKM24/6331/8
14	9	WASHER	SCHEIBEHVM24
15	41	WASHER	SCHEIBEHVM20
16	5	COTTER PIN	SPLINT5/32/94
18	5	BOLT	ZYSCHM20/35/10.9/912
20	9	HV-WASHER	I1060.01.08.00 E

# SPAREPART LIST PC 10/60 I

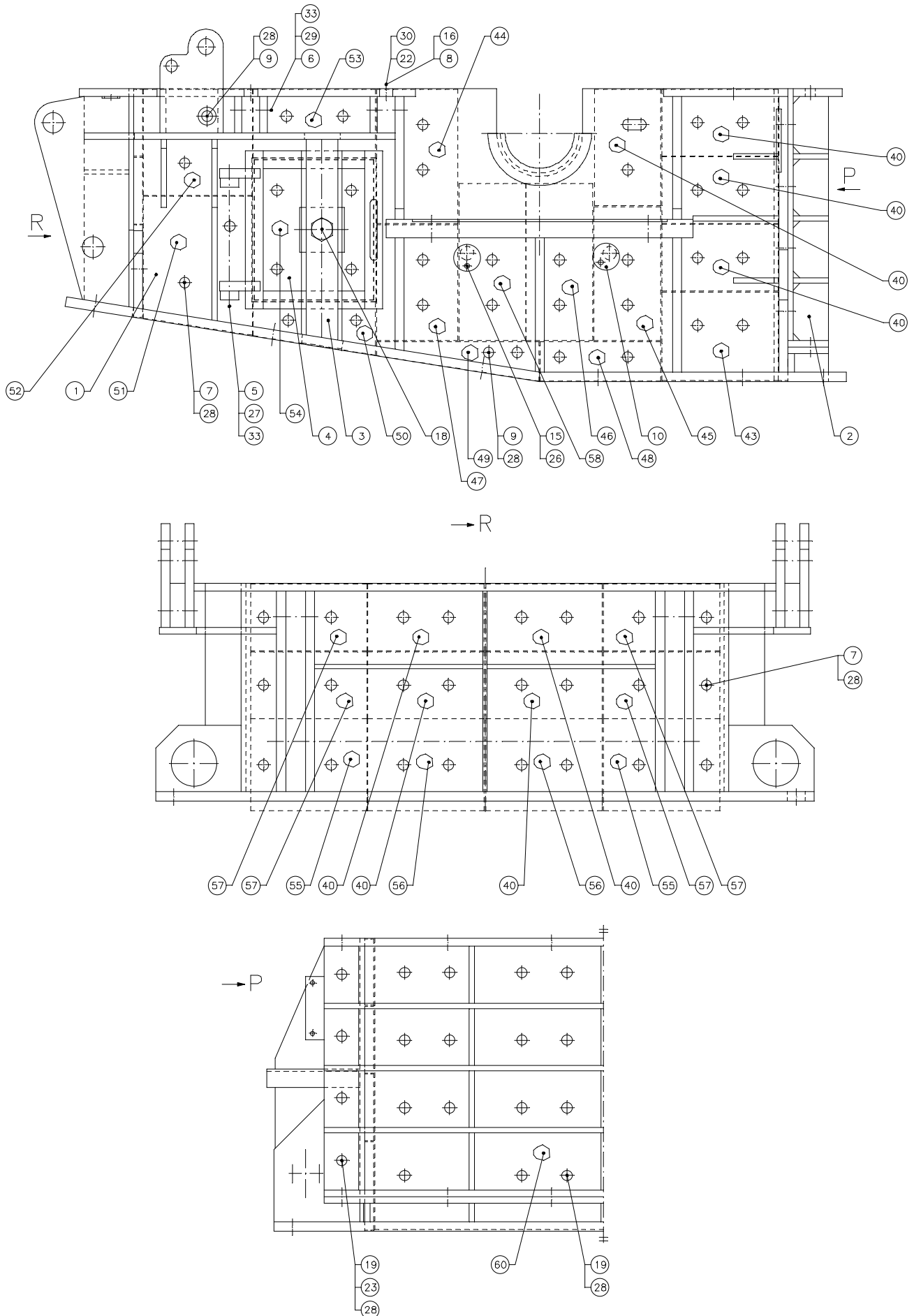
## 5.2.1 WEAR PLATES I1060.131.02.00 D



POS.	QUANT.	DESIGNATION	ARTICLE NO.
1	1	WEAR PLATE	I10/60.031.02.01 E
2	1	WEAR PLATE	I1060.03.02.02 Db
3	1	WEAR PLATE	I1060.02.02.03 Da
4	14	WEAR PLATE	I1060.02.02.04 E
6	1	WEAR PLATE	I1060.031.02.06 E
7	1	WEAR PLATE	I1060.12.02.07 E
8	1	WEAR PLATE	I1060.12.02.08 E

# SPAREPART LIST PC 10/60 I

## 5.3 UNDER SECTION I1060.01.00.00 Ca

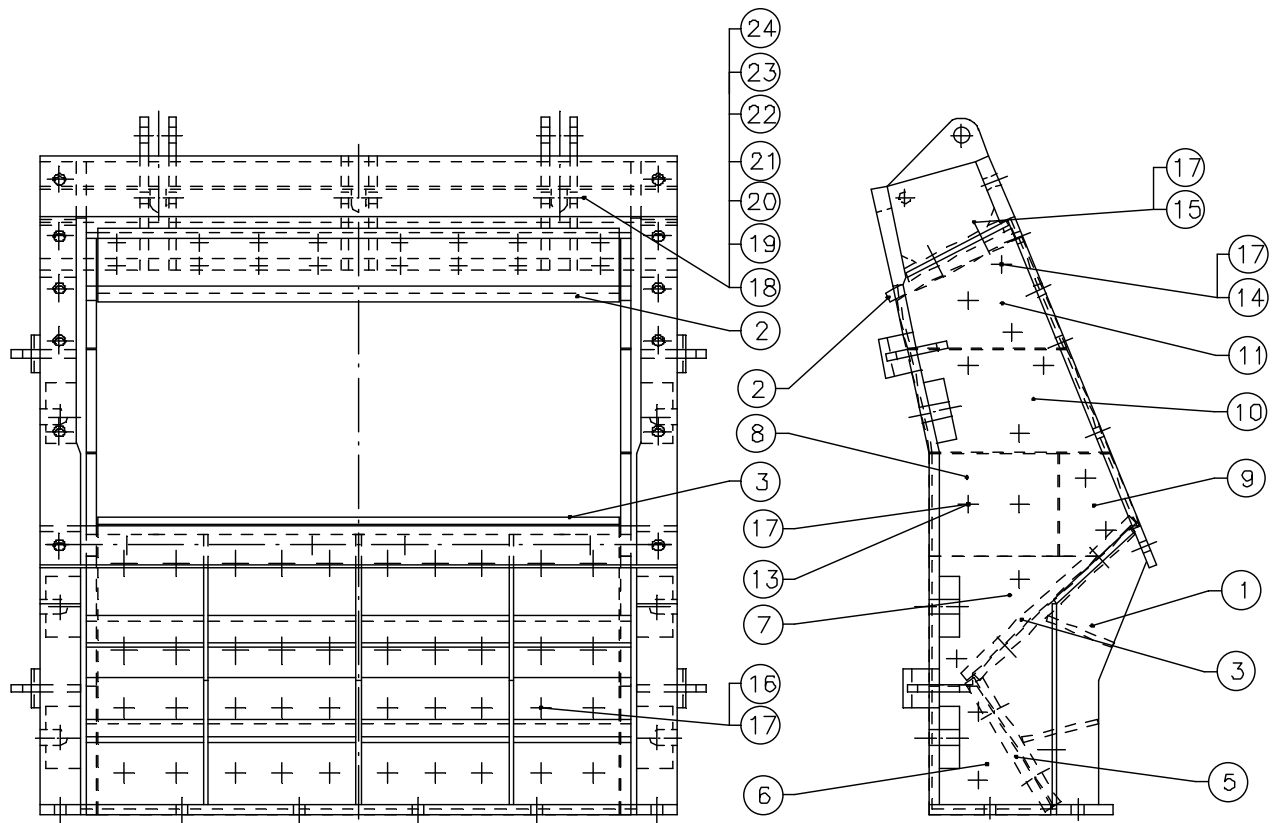


# SPAREPART LIST PC 10/60 I

POS.	QUANT.	DESIGNATION	ARTICLE NO.
3	2	LOCK	I1060.01.60.00 D-
4	2	SIDE DOOR	I1060.01.61.00 D-
5	4	PIN	I1060.01.00.62 Ea
6	4	PIN	I1060.01.00.63 Ea
7	78	BOLT	SKSCHM20/35/10.9/933
8	4	WASHER	I1060.01.08.00 E-
9	18	BOLT	ZYSCHM20/35/10.9/912
10	4	COVER	I1060.01.00.79 E-
15	4	BOLT	ZYSCHM10/8.8/918
16	4	EYE BOLT	A-SCHM24/160
18	2	BOLT	SKSCHM30/100/8.8/931
19	30	BOLT	SKSCHM20/50/10.9/933
22	4	NUT	SKM24/6331/10
23	14	NUT	SKM24/934/8
26	4	WASHER	SCHEIBEM10/127
27	4	WASHER	SCHEIBEM20/125
28	126	HV-WASHER	SCHEIBEHVM20
29	4	WASHER	SCHEIBEM24/125
30	4	WASHER	SCHEIBEHVM24
33	8	COTTER PIN	SPLINT5/32/94
40	12	WEAR PLATE	I1060.01.00.40 Ea
43	2	WEAR PLATE	I1060.01.00.43 Eb
44	2	WEAR PLATE	I1060.01.00.44 Ea
45	2	WEAR PLATE	I1060.01.00.45 Eb
46	2	WEAR PLATE	I1060.01.00.46 Ea
47	2	WEAR PLATE	I1060.01.00.47 Ea
48	2	WEAR PLATE	I1060.01.00.48 Eb
49	2	WEAR PLATE	I1060.01.00.49 Ea
50	2	WEAR PLATE	I1060.01.00.50 Ea
51	2	WEAR PLATE	I1060.01.00.51 Ea
52	2	WEAR PLATE	I1060.01.00.52 Ea
53	2	WEAR PLATE	I1060.01.00.53 Ea
54	2	WEAR PLATE	I1060.01.00.54 Ea
55	2	WEAR PLATE	I1060.01.00.55 Ea
56	2	WEAR PLATE	I1060.01.00.56 Ea
57	4	WEAR PLATE	I1060.01.00.57 Ea
58	2	WEAR PLATE	I1060.01.00.58 Eb
60	1	WEAR PLATE	I1060.01.00.60 Da

# SPAREPART LIST PC 10/60 I

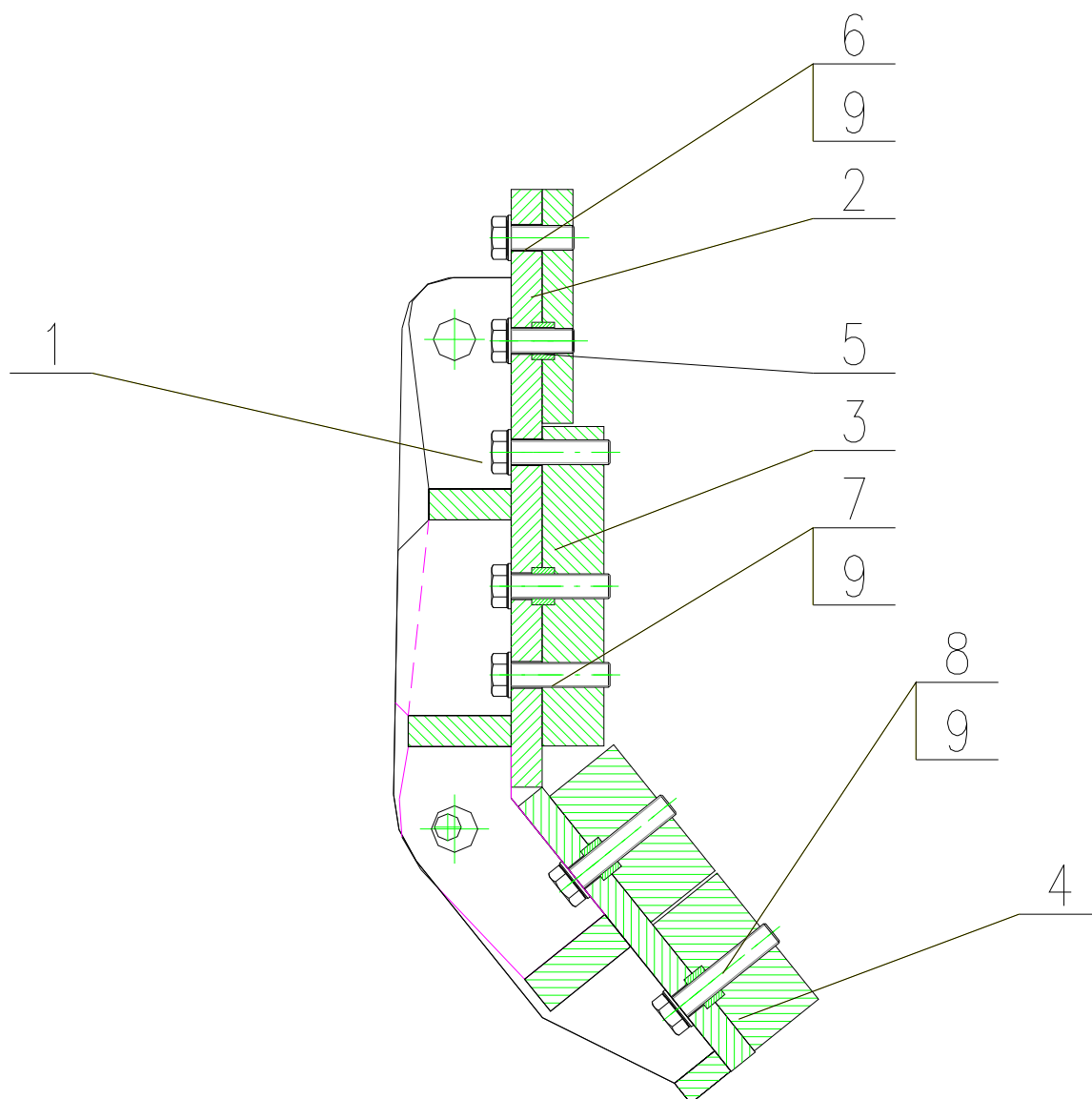
## 5.4 CRUSHER INLET I1060.061.00.00 C



POS.	QUANT.	DESIGNATION	ARTICLE NO.
1	1	INLET – WELDMENT	I1060.061.01.00 B
2	1	WEAR PLATE	I1060.16.02.00 D
3	1	WEAR PLATE	I1060.16.03.00 Da
5	1	WEAR PLATE	I1060.16.05.00 Da
6	2	WEAR PLATE	I1060.16.06.00 E
7	2	WEAR PLATE	I1060.16.07.00 E
8	2	WEAR PLATE	I1060.06.00.08 Ea
9	2	WEAR PLATE	I1060.16.09.00 E
10	2	WEAR PLATE	I1060.16.10.00 E
11	2	WEAR PLATE	I1060.16.11.00 E
13	16	BOLT	SKSCHM20/35/10.9/933
14	12	BOLT	SKSCHM20/45/10.9/933
15	16	BOLT	SKSCHM20/50/10.9/933
16	24	BOLT	SKSCHM20/40/10.9/933
17	68	HV-WASHER	SCHEIBEHVM20
18	3	WASHER	SCHEIBEM24/125
19	3	BOLT	A-SCHM24/160
20	3	PIN	I1060.01.00.63 E
21	3	COTTER PIN	SPLINT5/32/94
22	3	HV-WASHER	SCHEIBEHVM24
23	3	WASHER	I1060.01.00.72 E-
24	3	NUT	SKM24/6331/8

# SPAREPART LIST PC 10/60 I

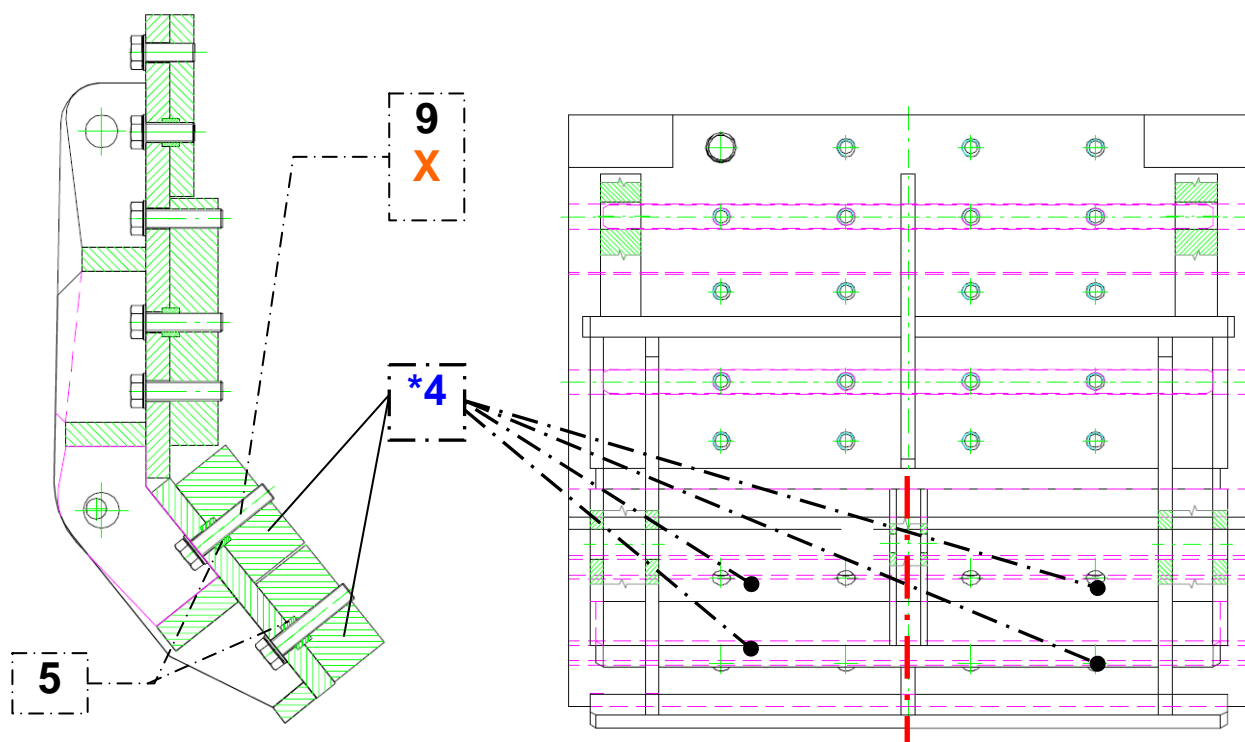
## 5.5 UPPER SWING BEAM I1060.071.00.00 C



POS	QUANT.	DESIGNATION	ARTICLE NO.
1	1	SWING BEAM WELDMENT	I1060.071.01.00 B
2	1	WEARPLATE	I1060.071.02.00 E
3	1	WEARPLATE	I1060.071.03.00 E
4	2	WEARPLATE	I1060.071.04.00 E
5	4	FEATHER	I1060.071.05.00 E
6	8	BOLT	SKSCHM24/65/10.9/933
7	12	BOLT	SKSCHM24/100/10.9/933
8	8	BOLT	SKSCHM24/120/10.9/933
9	28	WASHER	SCHEIBEHVM24

# SPAREPART LIST PC 10/60 I

## 5.5.1 UPPER SWING BEAM \*Optionally: Wear plates in “casted steel”

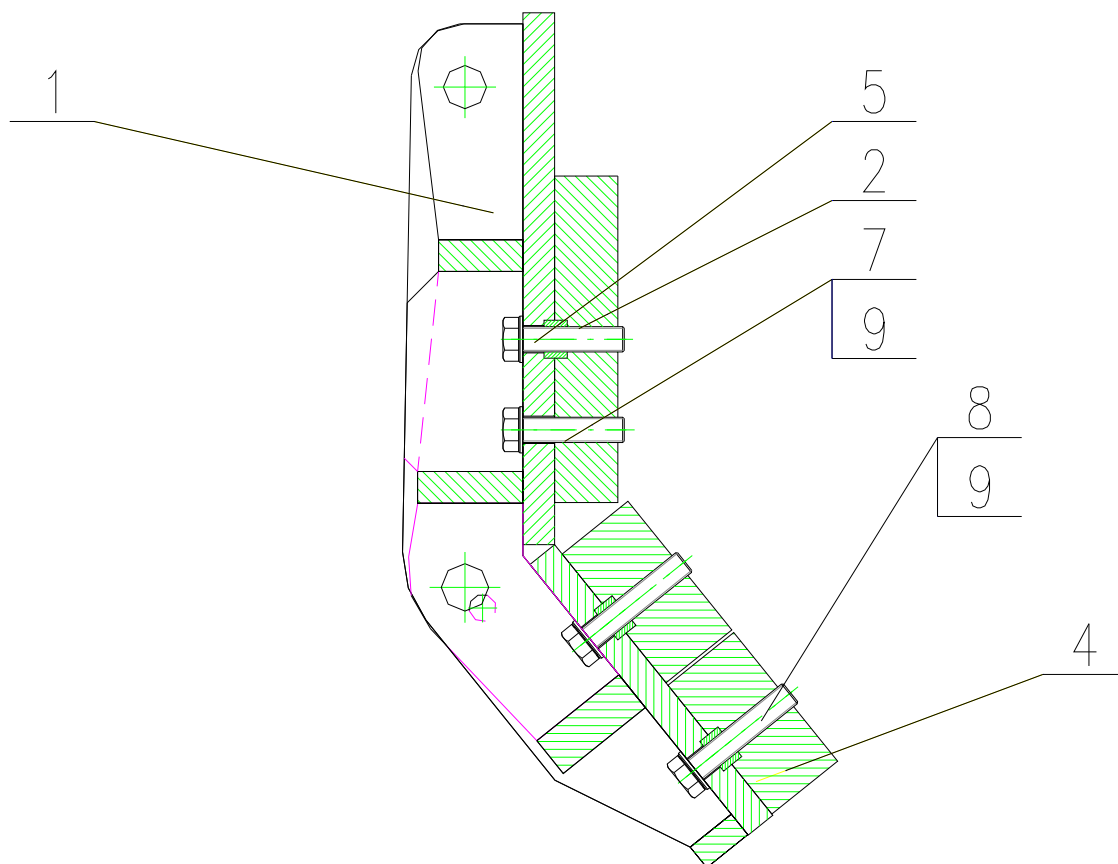


POS	QUANT.	DESIGNATION	ART. NO.	ARTICLE NO.
4	4	WEAR PLATE “casted steel”	300354	I1060.071.04.00EG
x	8	BOLT SPECIAL	300052	SPEZIALSCHM24/155
5	2	FEATHER	300022	I1060.071.05.00E
9	8	WASHER	1500012	SCHEIBEHVM24



# SPAREPART LIST PC 10/60 I

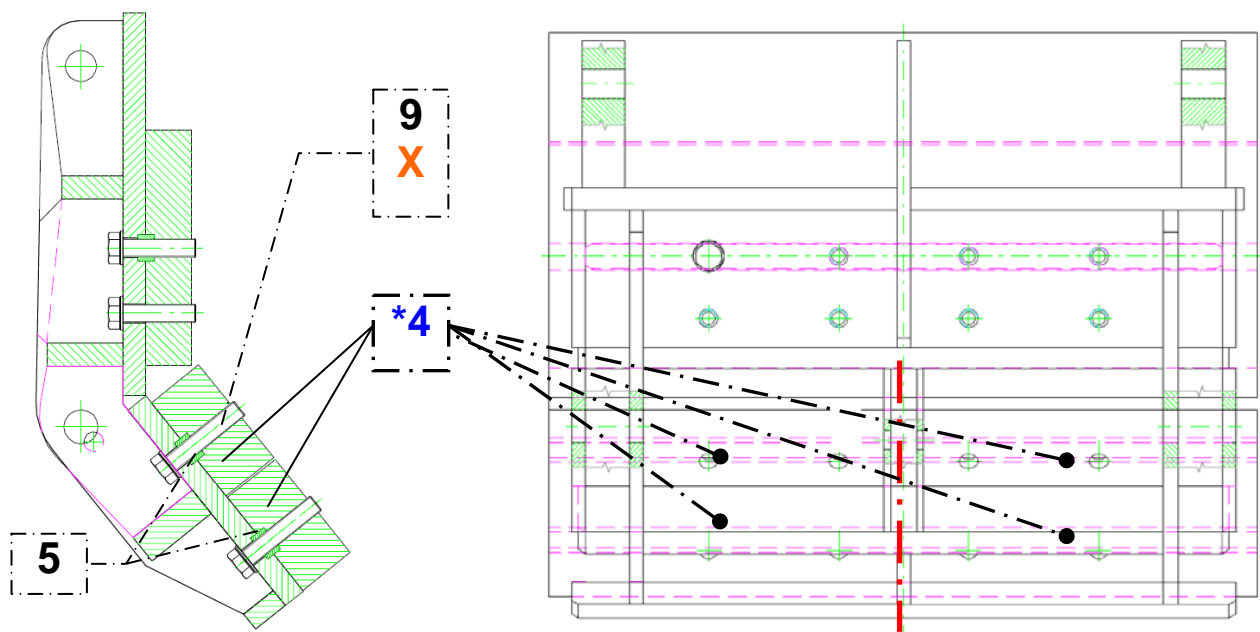
## 5.6 LOWER SWING BEAM I1060.101.00.00 C



POS	QUANT.	DESIGNATION	ARTICLE NO.
1	1	LOWER SWING BEAM	I1060.101.01.00 B
2	1	WEAR PLATE	I1060.101.02.00 E
4	2	WEAR PLATE	I1060.071.04.00 E
5	3	FEATHER	I1060.071.05.00 E
7	8	BOLT	SKSCHM24/100/10.9/933
8	8	BOLT	SKSCHM24/120/10.9/933
9	16	SPRING WASHER	SCHEIBEHVM24

# SPAREPART LIST PC 10/60 I

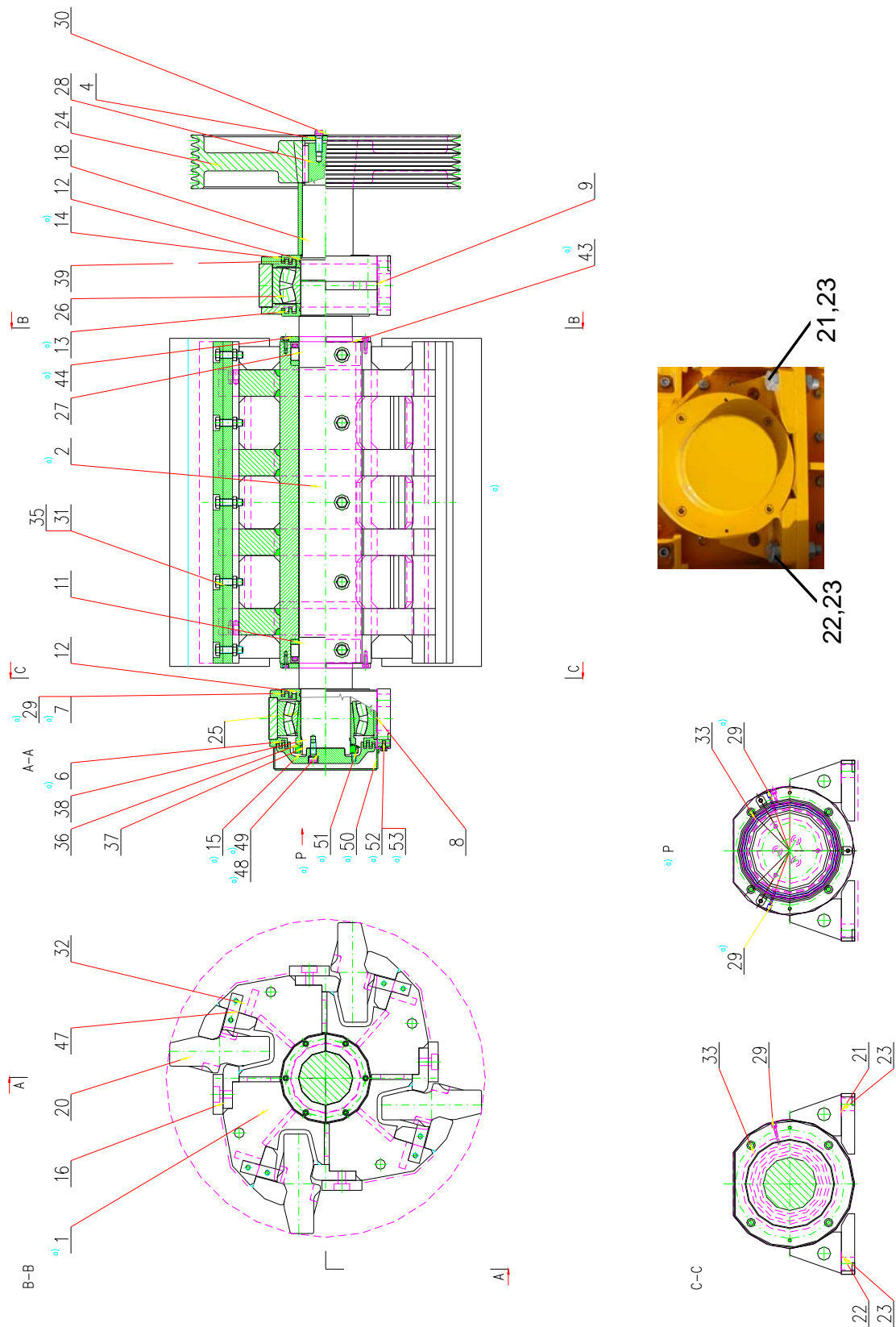
## 5.6.1 LOWER SWING BEAM \*Optionally: Wear plates in “casted steel”



POS	QUANT.	DESIGNATION	ART. NO.	ARTICLE NO.
4	4	WEAR PLATE “casted steel”	300354	I1060.071.04.00EG
x	8	BOLT SPECIAL	300052	SPEZIALSCHM24/155
5	2	FEATHER	300022	I1060.071.05.00E
9	8	WASHER	1500012	SCHEIBEHVM24

# SPAREPART LIST PC 10/60 I

## 5.7 ROTOR I1060.38.00.00 B-

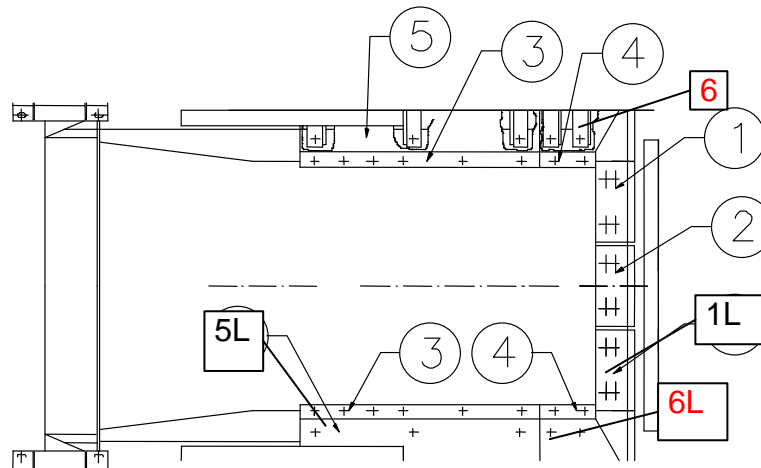


# SPAREPART LIST PC 10/60 I

POS	QUANT.	DESIGNATION	ARTICLE NO.
1	1	ROTOR-WELDMENT	I1060.38.01.00 B
2	1	SHAFT	I1060.38.02.00 C
4	1	PLATE	I1060.08.00.04 E
6	1	COVER	H301.28.061.00 C
7	1	COVER	H301.28.07.00 Da
8	1	BEARING 1.	I1060.38.08.00 D
9	1	BEARING 2.	I1060.38.09.00 D
11	2	PLATE	I1060.08.00.11 E
12	3	OUTER RING	I1060.28.12.00 E
13	1	LABYRINT	H301.28.13.00 Db
14	1	LABYRINT	H301.28.14.00 Db
15	1	LABYRINT COVER	H301.38.15.00C
16	4	BAR	I1060.38.16.00 Da
18	1	TUBE	I1060.08.00.18 E
20	4	IMPACT BLADE L=990mm	SL1060.....
21	4	BOLT	4-980.005.091 E
22	4	BOLT	4-011.015.265 E
23	8	NUT	4-014.010.362 E
24	1	V-BELT PULLEY	KRS800/6SPC
25	1	BEARING	LAG23232EFK800W33
26	1	BEARING	LAG22330EF800
27	2	LOCK RING	LAGRF160/210
28	1	PARALLEL KEY	PASSFEDER32/18/110
29	5	GREASING HEAD	SCHMIERNH3R1/4
30	3	BOLT	ZYSCHM20/50/8.8/912
31	20	BOLT	SKSCHM20/70/1.5/10.9
32	16	BOLT	SKSCHM16/40/8.8/933
33	16	BOLT	ZYSCHM16/30/8.8/912
35	20	NUT	SKM20/1.5/985/10
36	1	WASHER	LAGMB30
37	1	NUT	LAGKM30
38	1	BUSH	LAGAH3232
39	3	O-RING	ORING150X5
43	2	COVER	H301.38.431.00 E
44	8	BOLT	SKSCHM8/20/8.8/933
45	8	WASHER	SCHEIBEM8/125
47	8	LOOCK	I1060.28.47.00 E
48	3	BOLT	ZYSCHM12/45/8.8/912
50	1	COVER	H1275.08.50.00

# SPAREPART LIST PC 10/60 I

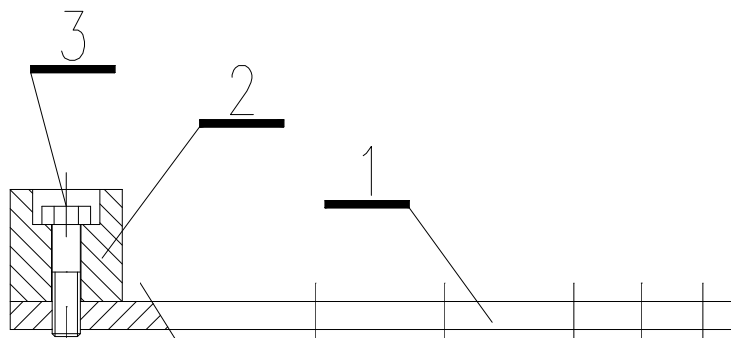
## 5.8 WEAR PLATES CRUSHER OUTLET PC1060I.12.00.00 Bf



POS.	QUANT.	DESIGNATION	ARTICLE NO.
1	1	WEAR PLATE	PC1060I.00.17.00 Dc P1R
1L	1	WEAR PLATE	PC1060I.00.17.00 Dc P1L
2	1	WEAR PLATE	PC1060I.00.17.00 Dc P2
3	2	EDGE COVER II	PC1060I.00.23.00 Ea
4	2	EDGE COVER I	PC1060I.00.22.00 D
5	1	WEAR PLATE	PC1060I.10.70.00 EdR
5L	1	WEAR PLATE	PC1060I.10.70.00 EdL
6	1	WEAR PLATE	PC1060I.10.69.00 EcR
6L	1	WEAR PLATE	PC1060I.10.69.00 EcL

\*Wear plates are in "wear steel 450"

## 5.9 ADJUSTMENT PLATE UNDER CRUSHER OUTLET

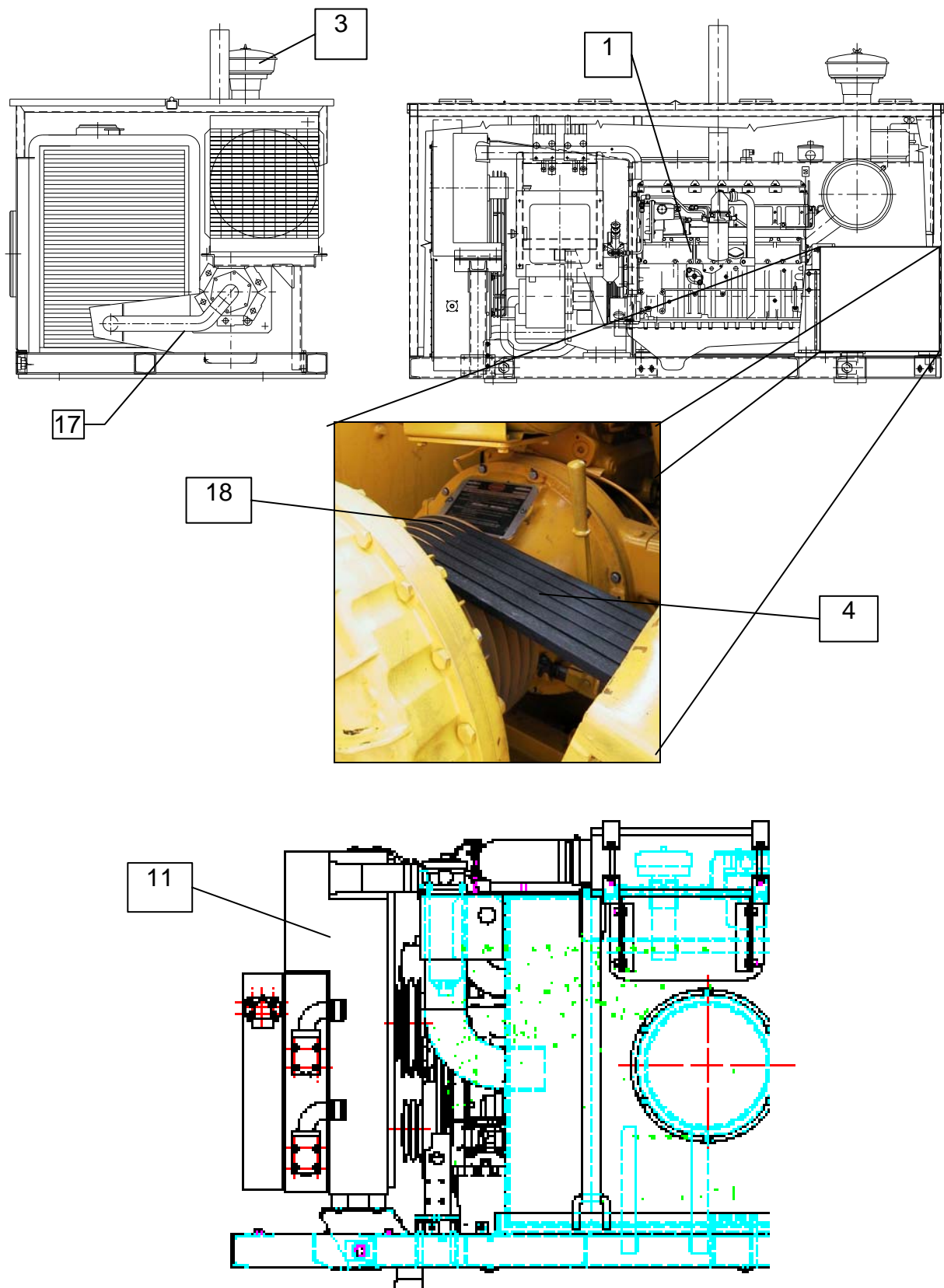


POS.	QUANT.	DESIGNATION	ARTICLE NO.
1	1	PLATE	PC1060I.00.19.00CaP2
2	1	WEAR PLATE	KM03P.00.18.00E
3	5	BOLT	SKSCHM20/80/10.9/931

\*Wear plates are in "wear steel 450"

# SPAREPART LIST PC 10/60 I

## 6 DRIVING UNIT



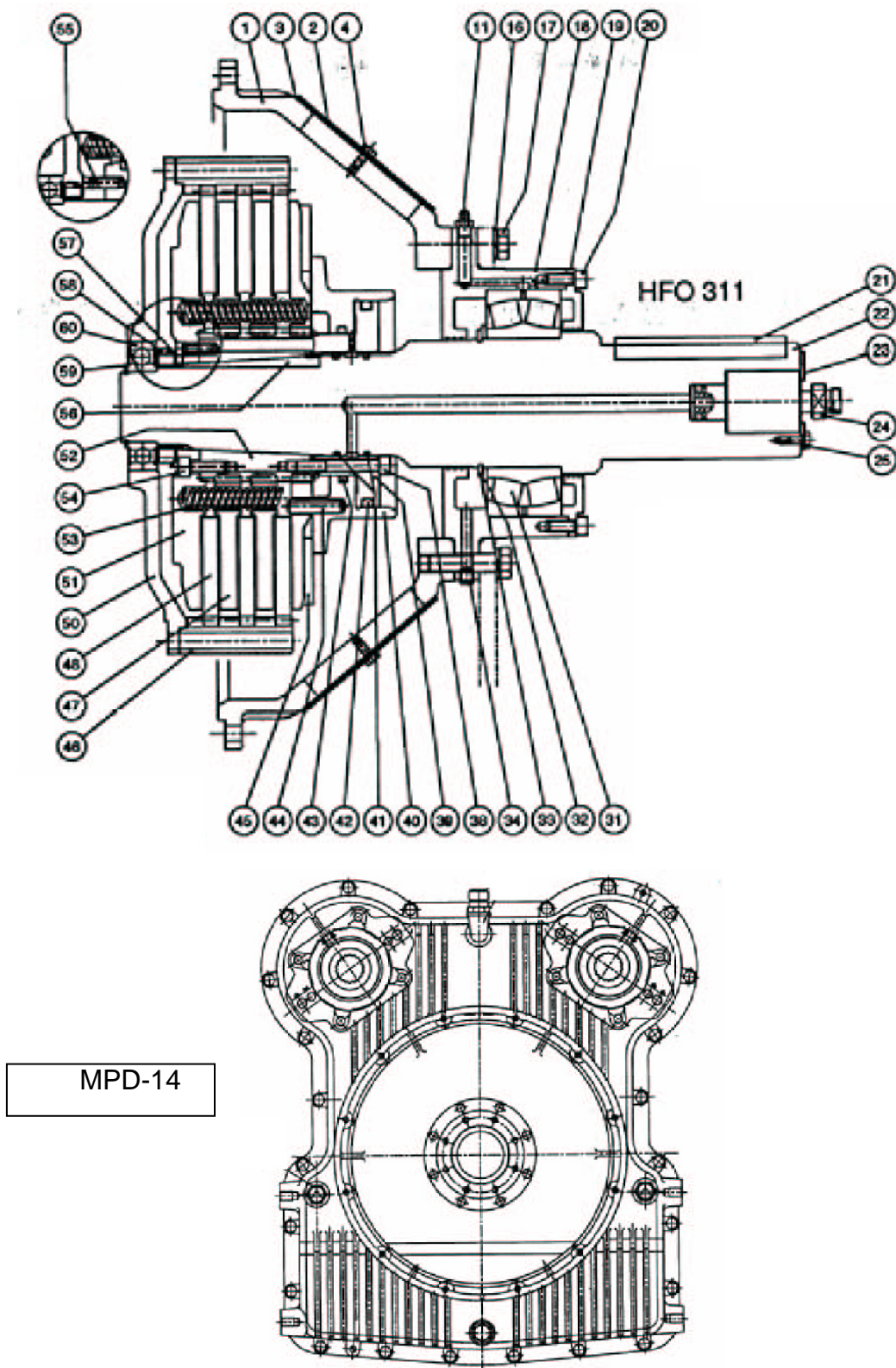
# SPAREPART LIST PC 10/60 I

POS	QUANT	DESIGNATION	ARTICLE NO.
1	1	ENGINE CATERPILLAR C7 STAGE III	MTCTC7ST3
3	1	AIR FILTER	MOTCT3126TURBOCL
4	6	V-BELTS	KRN6700SPC
5	1	CLUTCH FOR PUMP	KUPCF270
11	1	COMBI COOLER AIR/WATER/OIL	HYKKSHK099A2
17	1	SPIRAL-HOSE	HYSSNW70/1000
18	1	V-BELT PULLY	KRS335/6SPC
19	1	SEALING F.MANHOLE O-SHAPED	ORING340X5

# SPAREPART LIST PC 10/60 I

## 6.1 CLUTCH HFO-311 & MULTI PUMP MPD-14

POS.	QUANT.	DESIGNATION	ARTICLE NO.
		CLUTCH & MULTI PUMP	HYANTRPAK2HFO311





# SPAREPART LIST PC 10/60 I

POS.	BEZEICHNUNG	DESIGNATION
1	Gehäuse	housing
2	Deckel	cover
3	Dichtring	sealing
4	Schraube	screw
5	Schraube	screw
6	Scheibe	washer
7	Verlängerung	extension
8	Schraube	screw
9	Scheibe	washer
10	Sicherungsscheibe	safety washer
11	Schmienippel	nippel head
12	Stopfen	plug
13	Stopfen	plug
14	Ölmessstab	dipstick
15	Rohr	tube
16	Scheibe	washer
17	Schraube	screw
18	Lagerhalter	bearing holder
19	Deckel	cover
20	Schraube	screw
21	Passfeder	parallel key
22	Welle	shaft
23	Sicherungsscheibe	safety washer
24	Drehverbindung	rotary-connector
25	Schraube	screw
26	Schraube	screw
27	Flansch für Kegelbuchse	flange for ball lining
28	Kegelbuchse	ball lining
29	Dichtung	sealing
30	O-Ring	o ring
31	Lager	bearing
32	Unterlegscheibe	washer
33	Sprengring	circlip
34	Stopfen	plug
35	Schraube	screw
36	Dichtung	sealing
37	Mutter	nut
38	Schraube	screw
39	Nabe	hub
40	Kolben	piston
41	O-RING	o ring
42	O-RING	o ring
43	O-RING	o ring
44	Spannstift	dowel pin
45	Druckplatte	pressure plate
46	Treibring	driving ring
47	Zwischenplatte	intermediate plate

48	Reibscheibe	friction disk
49	Nabe und Stützplatte	hub and support plate
50	Schwungradadapter	adapter for flywheel
51	Stützscheibe	support disk
52	Keilnabe	key hub
53	Feder	spring
54	Schraube	screw
55	Spannstift	dowel pin
56	Passfeder	parallel key
57	Sicherungsscheibe	safety washer
58	Mutter	nut
59	Sprengring	spring dowel pin
60	Führungskugellager	leading ball bearing
61	Schraube	screw
62	Scheibe	washer
63	SAE-Adapter	SAE-adapter
64	Dichtungsträger	sealing support
65	Schraube	screw
66	O-Ring	o ring
67	Distanzring	distance ring
68	Lager	bearing
80	Schraube	screw
81	Mutter	nut
82	Scheibe	washer
83	Schraube	screw
84	Verlängerung SAE	extension SAE
85	elastische Kupplung	elastic clutch
86	Schraube	screw
87	Adapter für elastische Kupplung	adapter for elastic clutch
88	Sprengring	spring dowel pin
89	Distanzring	distance ring
90	Distanzring	distance ring
100	Ventil	valve
101	Dichtring	sealing
102	Ölanschluss (Ausgang)	oil-connection (output)
103	Sprengring	spring dowel pin
104	Kolbenring	piston ring
105	Buchse für Kolbenring (innen)	hub for piston ring (inner)
106	Buchse für Kolbenring (außen)	hub for piston ring (outside)
107	Spannstift	dowel pin
108	Stopfen	plug
109	Schraube	screw

# SPAREPART LIST PC 10/60 I

## 6.2 HYDRAULIC OIL TANK

POS.	QUANT.	DESIGNATION	ARTICLE NO.
1	1	TANK WELDMENT	MT03P.31.02.01.Ba
2	1	MAN HOLE COVER	MANNLOCHDKL
3	1	SEALING FOR MAN HOLE COVER	ORING340X5
4	1	AIRATION FILTER	HYFILELFP5G10W2
5	1	ELECTRIC LEVEL SWITCH	HYSSCHWIMMSSM2
6	1	RETURN FILTER HYDRAULIC OIL	HYFILRLTEF426
6a	1	FILTER ELEMENT	HYFILES01.E42510P
7	1	OIL LEVEL REGARDING GLAS	ÖLSCHAUFSA254
8	1	LEAK OIL RETURN FILTER	HYFILWPL90-10
8a	1	FILTER ELEMENT	HYFILESWP90-10
9	1	BALL VALVE FOR OIL OUTLET	HYKHND11/2"
10	1	BALL VALVE FOR HYDRAULICPUMP	HYKHND21/2"



4



5



6



6a



7



8



8a

# SPAREPART LIST PC 10/60 I

## 6.3 FUEL TANK

POS.	QUANT.	DESIGNATION	ARTICLE NO.
1	1	TANK WELDMENT	MT03P.01.141.01B
2	1	FUEL FILLING PUMP	HYBETANKPUMPE
3	1	FILLER CAP	TANKVERSCH
4	1	ELECTRIC FUEL INDICATOR	E9170007
5	1	AIRATION FILTER	HYFILBF3101.0
6	1	FUEL INDICATOR GLAS	ÖLSCHAUFSA176
7	1	MAN HOLE COVER	MANNLOCHDKL
8	1	SEALING FOR MAN HOLE COVER	ORING340X5
9	1	BALL VALVE OUTLET TANK	HYKHND1



2

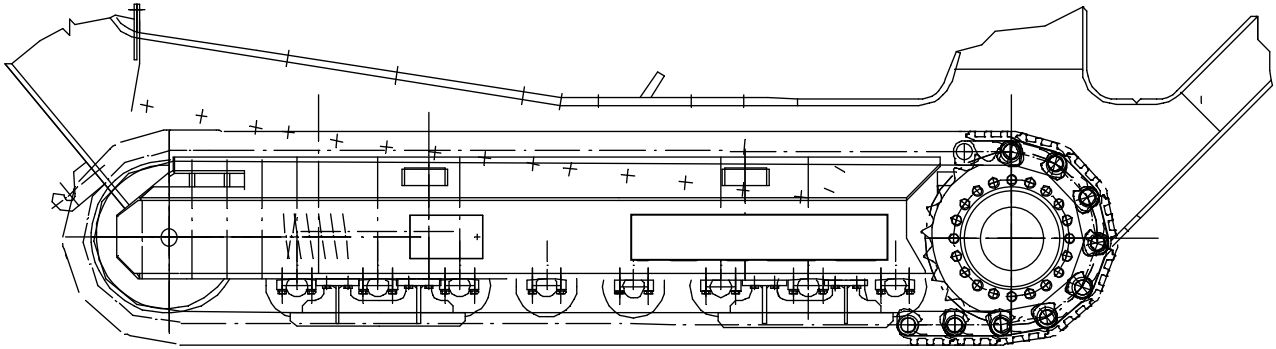


3



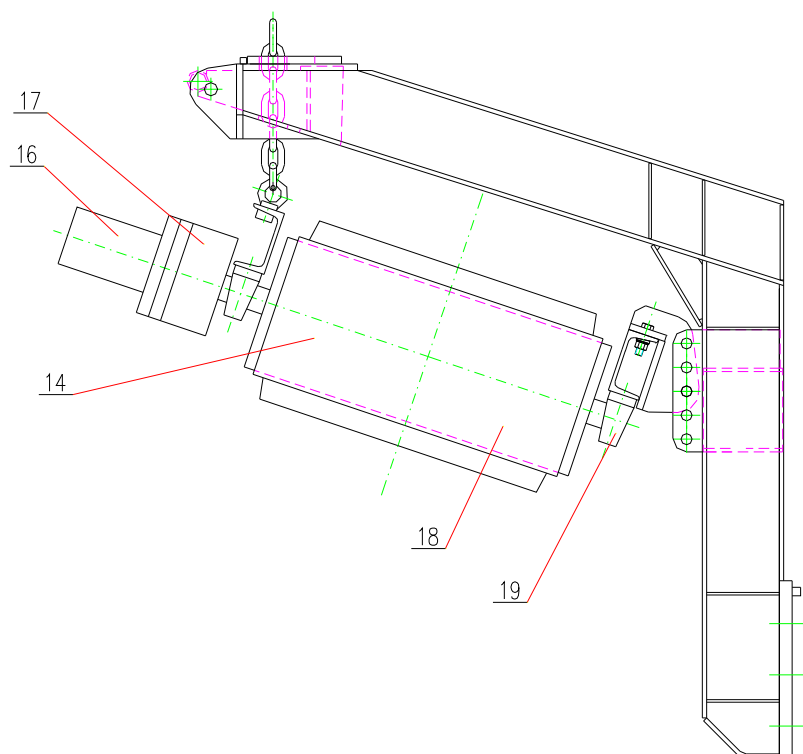
6

## 7 CRAWLER UNIT



POS	DESIGNATION	ARTICLE NO.
1	CRAWLER-CHAIN SET	See attachments of user manual
2	GEAR DRIVE SET	LWGET709A0181

## 8 MAGNETIC SEPARATOR



Pos.	Quant.	Designation	ARTICLE-No.
14	1	MAGNET SEPARATOR COMPLETE	<b>MAGNETBAND1000</b>
16	1	MOTOR	<b>HYM495EATON</b>
17	1	CLUTCH	<b>KUPKOMPCP20/100</b>
17a	1	RUBBER PART OF CLUTCH	<b>KUPSTERNCP20/100</b>
18	1	BELT	<b>MAGNET503GURT</b>
19	2	BEARING	<b>LAGUCP208</b>



16



17



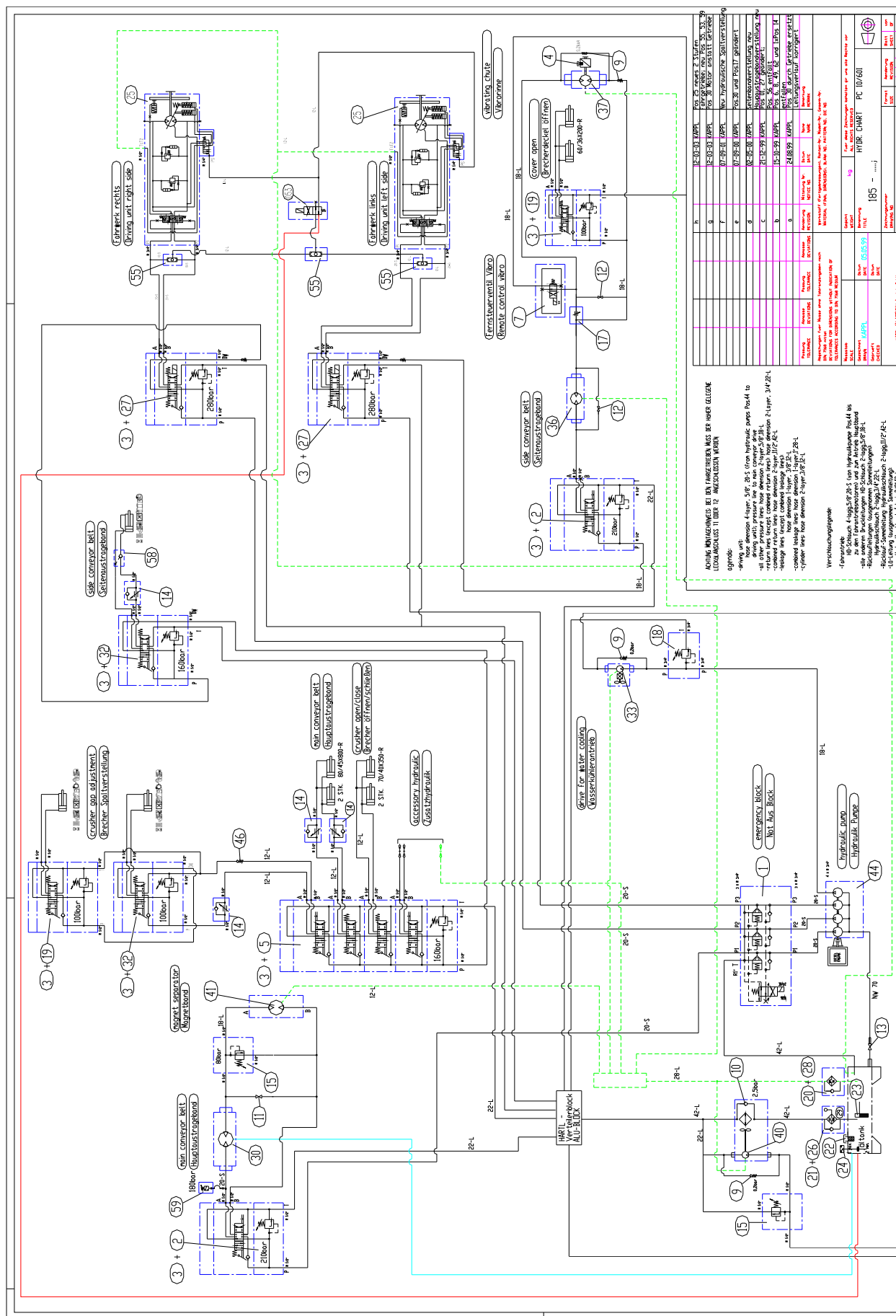
17a



19

SPAREPART LIST PC 10/60 I
---------------------------

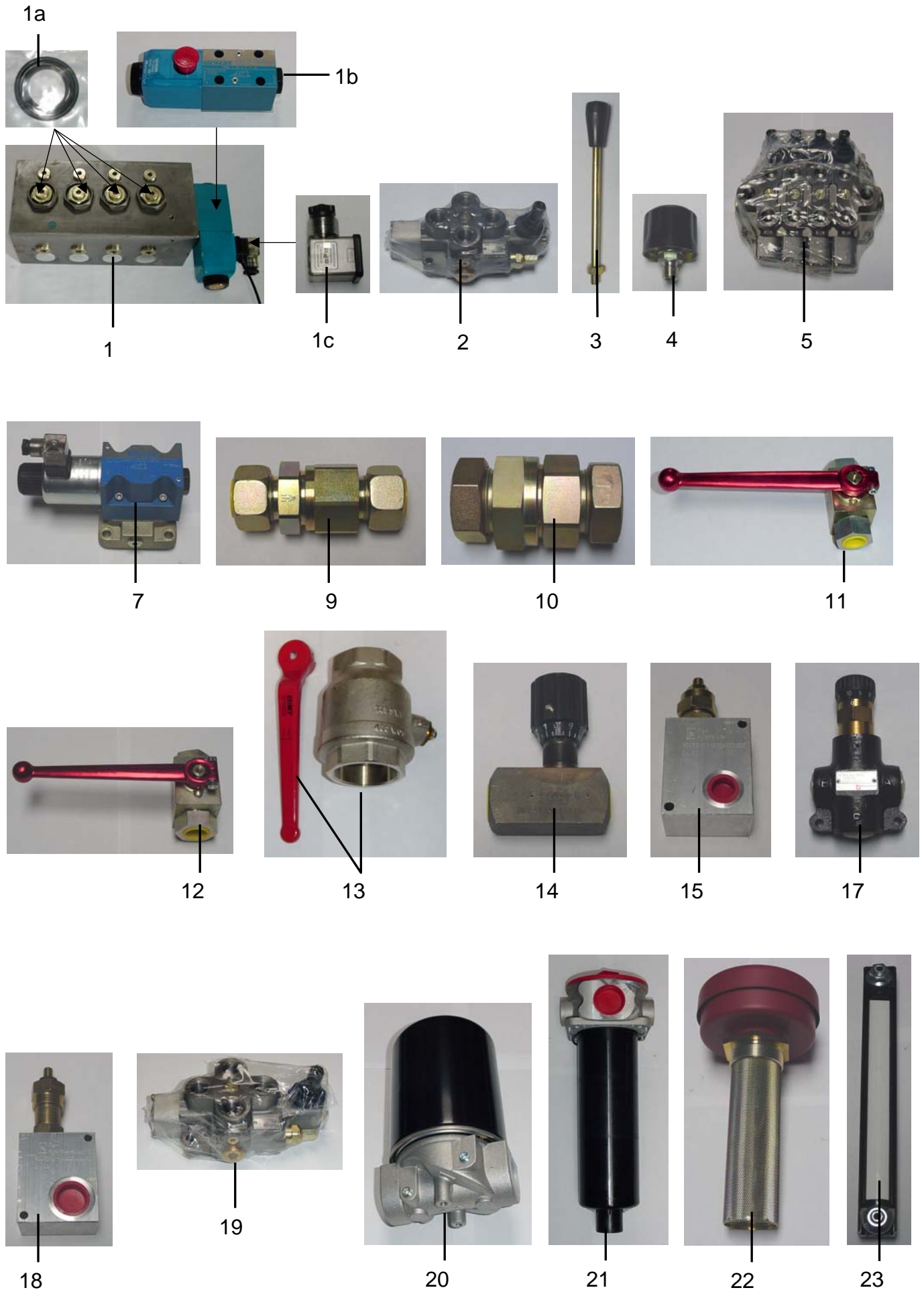
## 9 HYDRAULIC CHART



# SPAREPART LIST PC 10/60 I

POS.	QUANT.	DESIGNATION	ARTICLE NO.
1	1	EMERGENCY BLOCK	HYWEGEVENT2/23
1a	1	SEALS FOR VALVE BLOCK	HYWEGEDICHTSA
1b	1	VALVE	HYWEGE4/2NG06REP
1c	1	VALVE PLUG 24	HYVENTILSTECK2
2	2	VALVE	HYVENTHDM18/1K02
3	13	HANDLEVER	HYHANDHEBEL185
4	1	FILTER	HYFILBFP4G10
5	1	VALVE	HYVENTHDM18/4K02FFGG
7	1	VALVE FOR VIBRATING CHUTE	HYVENTDG4V52AJ
9	4	CHECK VALVE	HYVENTRHD18PL
10	1	CHECK VALVE	HYVENTRHD42PL
11	2	BALL VALVE	HYKHHDKHBG1/2
12	1	BALL VALVE	HYKHHDKHBG3/4
13	1	BALL VALVE	HYKHND21/2
14	4	THROTTLE VALVE	HYVENTDRV12-1.0
15	2	PRESSURE REDUCTION VALVE	HYVENTDBGR1/2
17	1	FLOW DEVIDER	HYMTMTKAVIDM08
18	1	PRESSURE REDUCTION VALVE	HYVENTDBGR3/4
19	2	VALVE	HYVENTHDM181K02F
20	1	FILTER	HYFILWPL90-10
21	1	RETURN LINE FILTER COMPLETE	HYFILRLTEF426
22	1	FILTER	HYFILELFP5G10W2
23	1	OIL REGARDING CAP	ÖLSCHAUFSA254
24	1	LEVEL SWITCH	HYSCHWIMMSSM2
26	1	FILTER ELEMENT	HYFILS01.E42510P
27	2	VALVE	HYVENTHDM18/1KEHI
28	1	FILTER ELEMENT	HYFILESWP90-10
29	1	POLLUTION CONTROLL UNIT	HYVERSCHMANZOA
30	1	DRIVE MAIN CONVEYOR BELT	HYMMSE05V
33	1	DRIVE WATER COOLER	HYMZR2026/GR2
36	1	DRIVE SIDE CNVEYOR BELT	HYM315/25OMP0617
37	1	DRIVE VIBRATING CHUTE	HYMZR3050M3AAP
40	1	DRIVE OIL COOLER	HYLKÖKÖMOT11
41	1	DRIVE MAGNETIC BELT	HYM495EATON
42	2	CHAIN DRIVE	LWGETMAG85VP11
44	1	HYDRAULIC PUMP	HYPP4FACHLI32
46	1	CHECK VALVE	HYVENTRHD12PL
53	1	VALVE FOR SECOND SPEED	HYVENTDG4V32AMUH760
55	3	VALVE	HYVENTWVT12S-1
58	1	VALVE	HYVENTRPIO6/5G
59	1	PRESSURE SWITCH	HYDRUCKSCHDS507

# SPAREPART LIST PC 10/60 I





# SPAREPART LIST PC 10/60 I



26



27



28



29



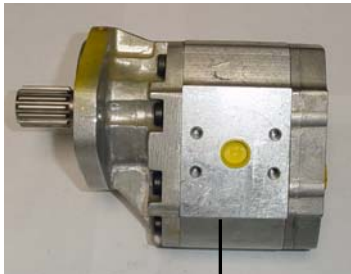
30



33



36



37



41



44



46



58

# SPAREPART LIST PC 10/60 I

## 10 Electric installation

Pos.	Quant.	Part number	Designation	Article No.
1	3	-K2.2,-K5.2	relais 24VDC incl. safetydiode	E9150000
2	3	-K2.2,-K5.2	relaissocket	E9150001
3	2	Reserve	relais 24VDC incl. safetydiode	E9150000
4	2	Reserve	relaissocket	E9150001
5				
6	1	-E6.2	radio control unit receiver	
7	1	-E6.2	radio control unit handtransmitter	
8	1	-E6.2	radio control unit antenna	
9	1	-E1.2	radio control unit charger	
10	1	-S5.21/-H5.2	push-button green illuminated	E9003060
10a	11		coupling unit	E9003300
11	1	-S5.21/-H5.2	Lamp holder	E9003300
12	1	-S5.21/-H5.2	contact NO	E9003301
13	1	-S5.21/-H5.2	lamp 24VDC	E9986025
14	1	-S5.21/-H5.2	silikosis cover	E9003410
15				
16				
17				
18	1	-S1.11	emergency stop	E9003160
19	1	-S1.11	shield emergency stop	E9003404
20	1	-S5.22/-H6.5	Push-button red illuminated	E9003062
21	1	-S5.22/-H6.5	Lamp holder	E9003303
22	1	-S5.22/-H6.5	contact NC	E9003540
23	1	-S5.22/-H6.5	lamp 24VDC	E9986025
24	1	-S5.22/-H6.5	silikosis cover	E9003410
25	1	-S6.3	Switch 3 pos	E9003200
26	2	-S6.3	contact NO	E9003301
27	1	-S6.3	shieldholder	E9003450
28	1	-S6.3	Shield "I 0 II"	E9003456
29	1	-S4.1	Switch 2 pos	E9003180
30	1	-S4.1	contact NO	E9003301
31	1	-S4.1	Shield holder	E9003450
32	1	-S4.1	shield "0 I"	E9003452
33	1	-S1.0	ignition key	E9106002
34	1	-P4	fuel indication	E9170220
35	1	-R3	fuel giver 479mm	E9170007
36	1	-R3	fuel holder	E9170000
37	1		Engine control unit EMS Marine	2500321
40	1	-H3.4	lamp transparency	E9003128
41	1	-H3.5	lamp red	E9003122
42	2	-H3.4,-H3.5	lampholder	E9003303
43	2	-H3.4,-H3.5	Lamp 24 VDC	E9986025
45	1		electric box	E9160007
46	1	-F4.1	Circuit breaker B16A	ESCHUTZETA16A

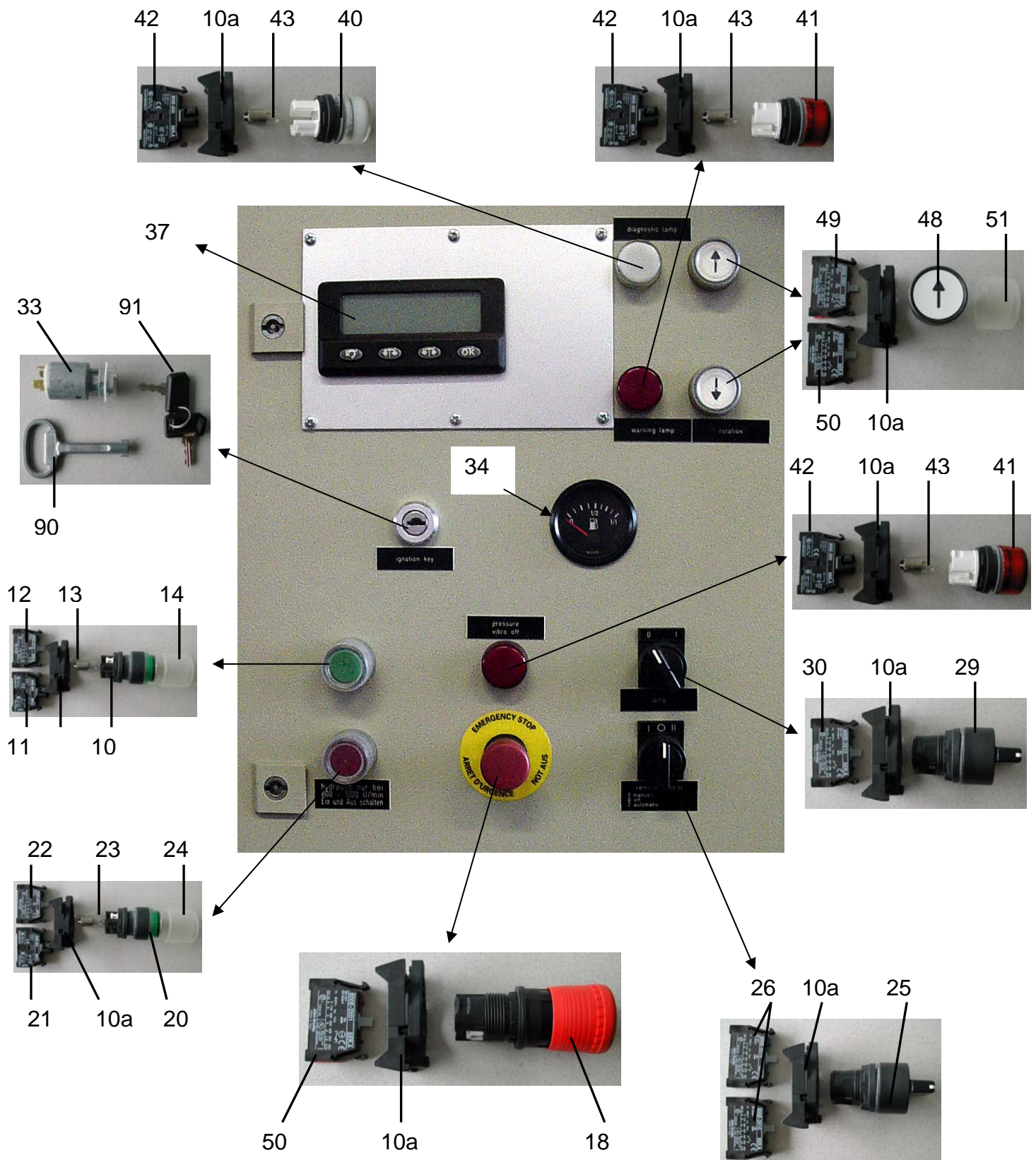
# SPAREPART LIST PC 10/60 I

47	1	-F4.2	Circuit breaker B10A	ESCHUTZETA10A
48	2	-S7.51, -S7.52	Push button white with arrow	E9003001
49	4	-S7.51, -S7.52	Contact NO	E9003301
50	3	-S7.51, -S7.52,-S1.12,...	Contact NC	E9003540
51	2	-S7.51, -S7.52	Silikosis cover	E9003408
Austaster				
52	2	-S4.7, -S4.8	nut PG16	E1013640
53	2	-S4.7, -S4.8	overhead plug	E9003360
54	2	-S4.7, -S4.8	contact NC	E9003540
55	2	-S4.7, -S4.8	push-button red	E9003006
56	2	-S4.7, -S4.8	silikosis cover	E9003408
57	2	-S4.7, -S4.8	wire crewing PG16 V-T	E1013540
Schwimmerschalter / floating switch				
58	1	-S4.3	Floating switch	HYSCHWIMMSSM2
Not Aus Extern / emergency stop extern				
59	1	-S1.12,-S1.13,-S1.14	emergency stop	E9003160
60	1	-S1.12,-S1.13,-S1.14	Metal box yellow	E9003364
61	2	-S1.12,-S1.13,-S1.14	wire crewing PG16 V-T	E1013540
62	2	-S1.12,-S1.13,-S1.14	nut PG16	E1013640
Seilzugschalter Extern / rope drive switch extern				
63	2	-S4.5,-S4.6	Rope drive switch	E9072011
Stecker f. Bänder extern / plug f. convayor extern				
64	2	X3, X4	plug socket closed 6 pol	E9067102
65	2	X3, X4	socket 6 pol	E9067000
66	3	X3, X4	overhead plug 6 pol	E9067200
67	3	X3, X4	plug 6 pol	E9067010
68	1	X3	blind screwing	E1013970
Temperaturgeber extern /temperature switch extern				
69	1	-S11.8	hydrauliccoiltemperature switch	E9175005
Kabel / cable				
70	125		Cable 3x1,5	E2160013
71	20		Cable 5x1,5	E2160015
72	10		Cable 7x1,5	E2160016
73	10		Cable 2x2x0,75	E2160050
Startrelais/startrelais				
74	1	-K2.1	startrelais	E9154000

# SPAREPART LIST PC 10/60 I

Arbeitsscheinwerfer/working lamp				
75	2	-H4.1,-H4.2	lamp with grating (without holder)	SCHEINWERFER
76				
Batterieschalter/ battery switch				
77	1	-S1.1	batterieswitch	EBATTERIESCHAL
Batterie/ battery				
78	2	-G2.1,-G2.2	battery	EBATTERIE 140
79	2	-G2.1,-G2.2	batterieterminal minus	EBATTERIEKLMIN
80	2	-G2.1,-G2.2	batterieterminal plus	EBATTERIEKLPLU
Schlüssel/ keys				
90	1		panel key	E9160015
91	1		starting key	E9106008
100	1	-H11.8	horn	E9056400

# SPAREPART LIST PC 10/60 I





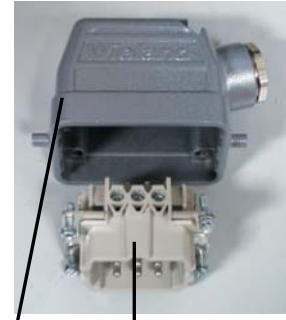
# SPAREPART LIST PC 10/60 I



63

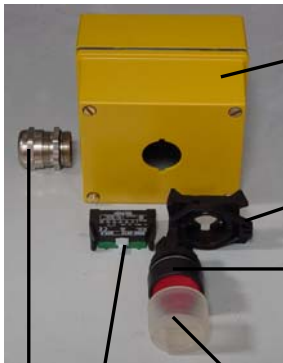


74



66

67



53

10a

55

57

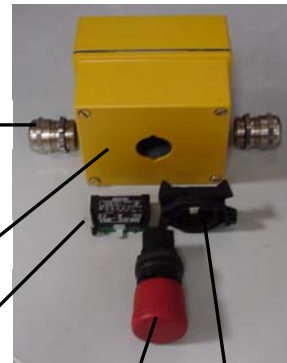
54

56



64

65



61

60

50

59

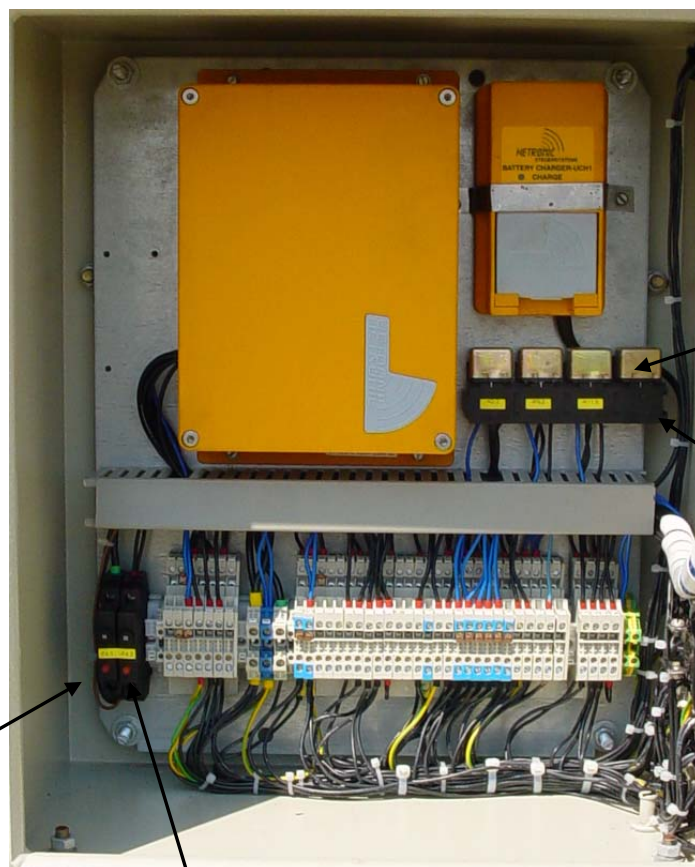
10a



69



77



1

2

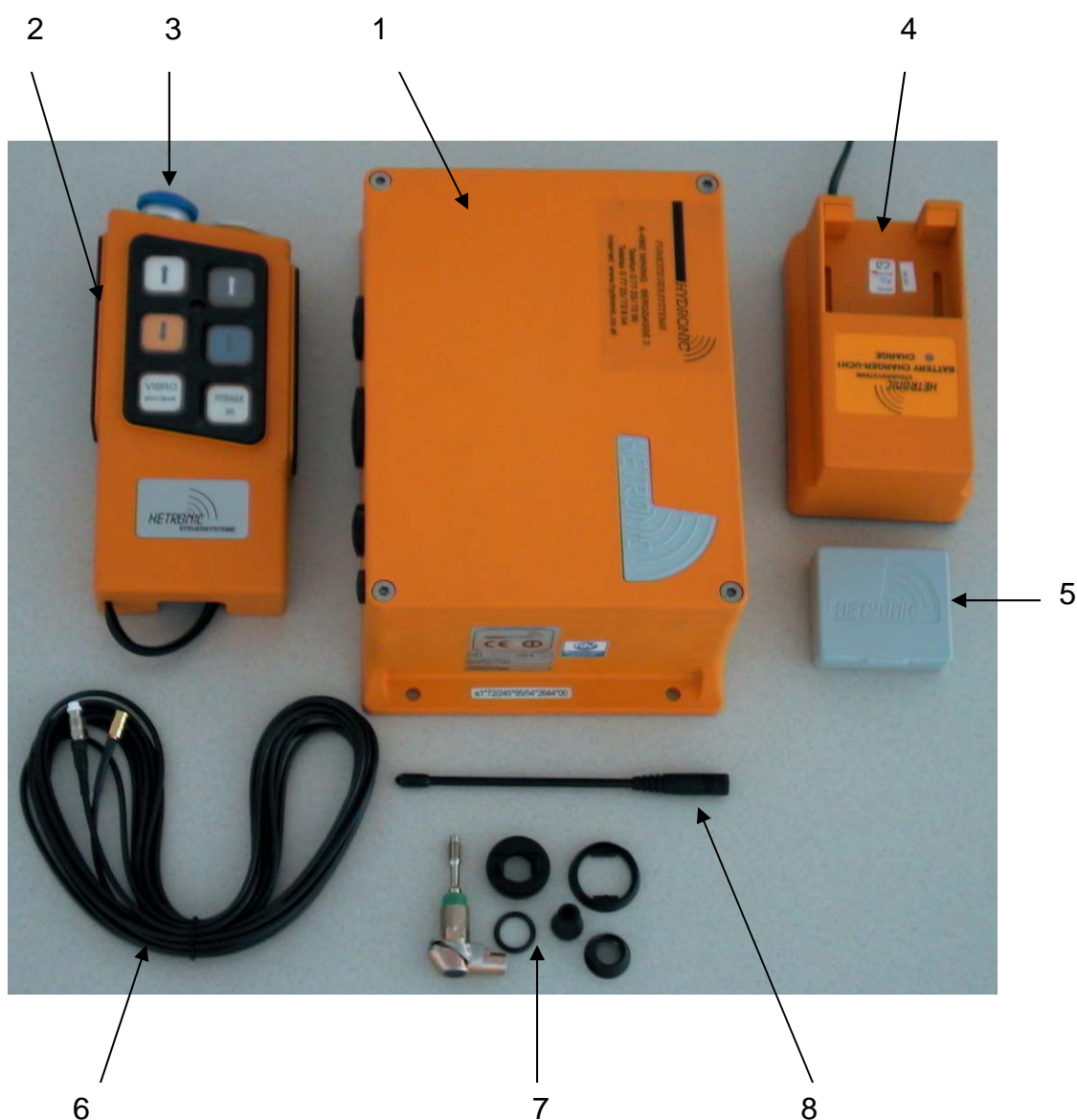
46

47

# SPAREPART LIST PC 10/60 I

## 11 REMOTE CONTROL

Pos.	Quant	Designation	Article-No.
1	1	radio control unit receiver	FERNSTEMPFGA609
2	1	radio control unit hand transmitter	FERNSTHANDSENDERGOV2
3	1	on/ off - button	FERNSTHYDROTASTBLAU
4	1	radio control unit charger	FERNSTLADEGERÄT
5	2	Akku	FERNSTAKKUMINI
6	2	radio control unit antenna	FERNSTANTKAB5M
7	1	antenna foot	FERNSTANTFUSSHYDR
8	1	antenna	FERNSTANTSTAB



## 12 GENERAL

### HARTL ANLAGENBAU CONTACT ADDRESS:

#### **AUSTRIA:**

HARTL Anlagenbau GmbH  
PEM Straße 2  
A-4310 Mauthausen

Tel.: +43 (0)7238 / 29350  
Fax: +43 (0)7238 / 29350-40

E-mail: Warranty dept.: torw@powercrusher.com  
E-mail: Service dept.: kalh@powercrusher.com  
E-mail: Spare parts:kass@powercrusher.com

ALL INFORMATION OF THIS PUBLICATION IS BASED ON THE LATEST PRODUCT-DEVELOPMENT-INFORMATION, WHICH WAS AVAILABLE AT TIME OF THE GRANT TO PRINT POWERCRUSHER CRUSHING AND SCREENING TECHNIC RESERVES ALL RIGHTS TO PUT ON CHANGES AT ANY TIME AND WITHOUT ADVANCE NOTICE, WITHOUT UNDERTAKING ANY OBLIGATION.

NOT ANY PART OF THIS PUBLICATION HAS TO BE REPRODUCED WITHOUT WRITTEN GRANT OF POWERCRUSHER MAUTHAUSEN

MISPRINTS RESERVED.