

**POWERCRAUSER
PC 10/55 J**

SPARE PARTS PC 10/55J

INDEX

1	INTRODUCTION	3
2	JAW CRUSHER J 10/55	4
3	VIBRATING CHUTE.....	11
4	MAIN CONVEYOR BELT.....	13
4.1	DRIVING DRUM.....	17
5	SIDE CONVEYOR BELT.....	18
6	DRIVING UNIT.....	21
6.1	FLUID CLUTCH KUPKS17	23
7	CHAIN DRIVE.....	24
8	MAGNETIC SEPARATOR	25
9	HYDRAULIC COMPONENTS: HYDR. SCHEDULE PC1055J.072.00.00BI	26
10	ELECTRIC-SCHEDULE PC 10/55 J	30
11	REMOTE CONTROL.....	35
12	GENERAL	36

SPARE PARTS PC 10/55J

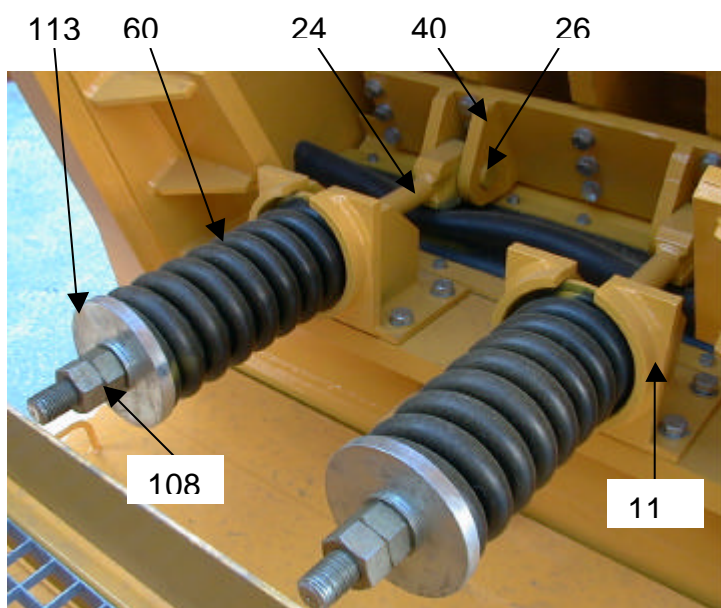
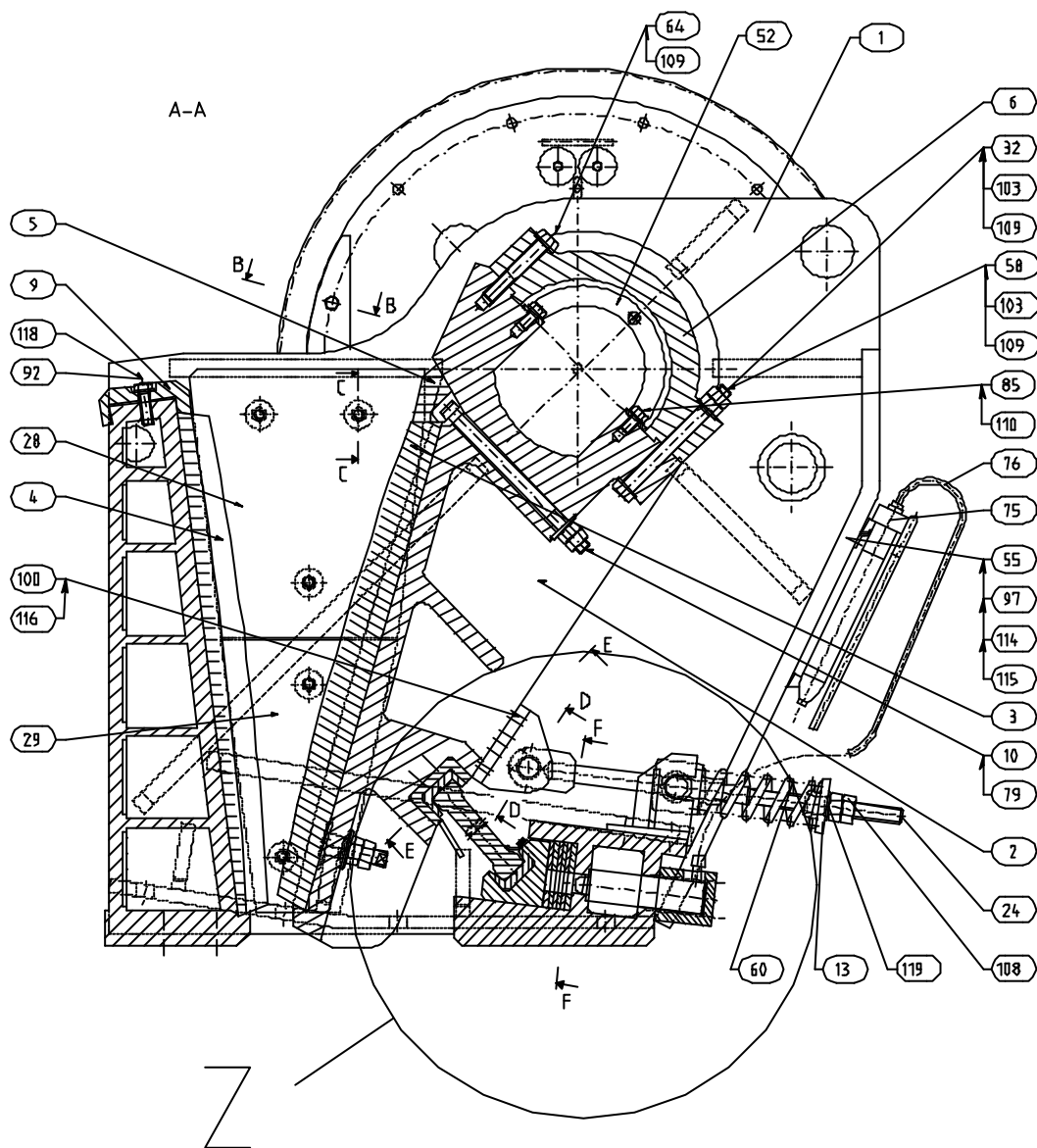
1 INTRODUCTION

This is a spare parts list of the Powercrusher PC 10/55 J which contains the main parts of this machine.

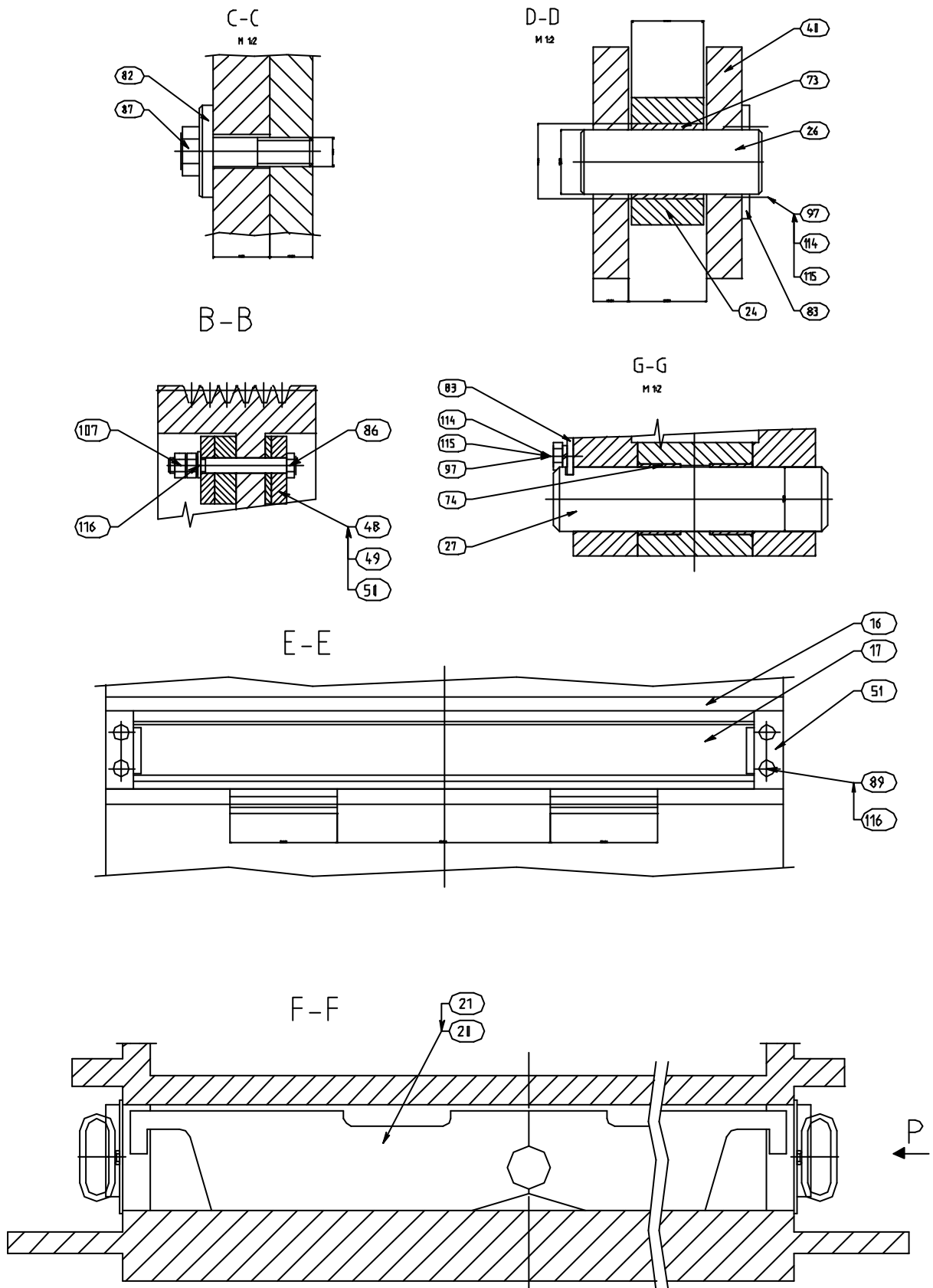
In order to avoid delays, please indicate first of all serial number of the plant, and in addition quantity, exact designation and article number.

SPARE PARTS PC 10/55J

2 JAW CRUSHER J 10/55

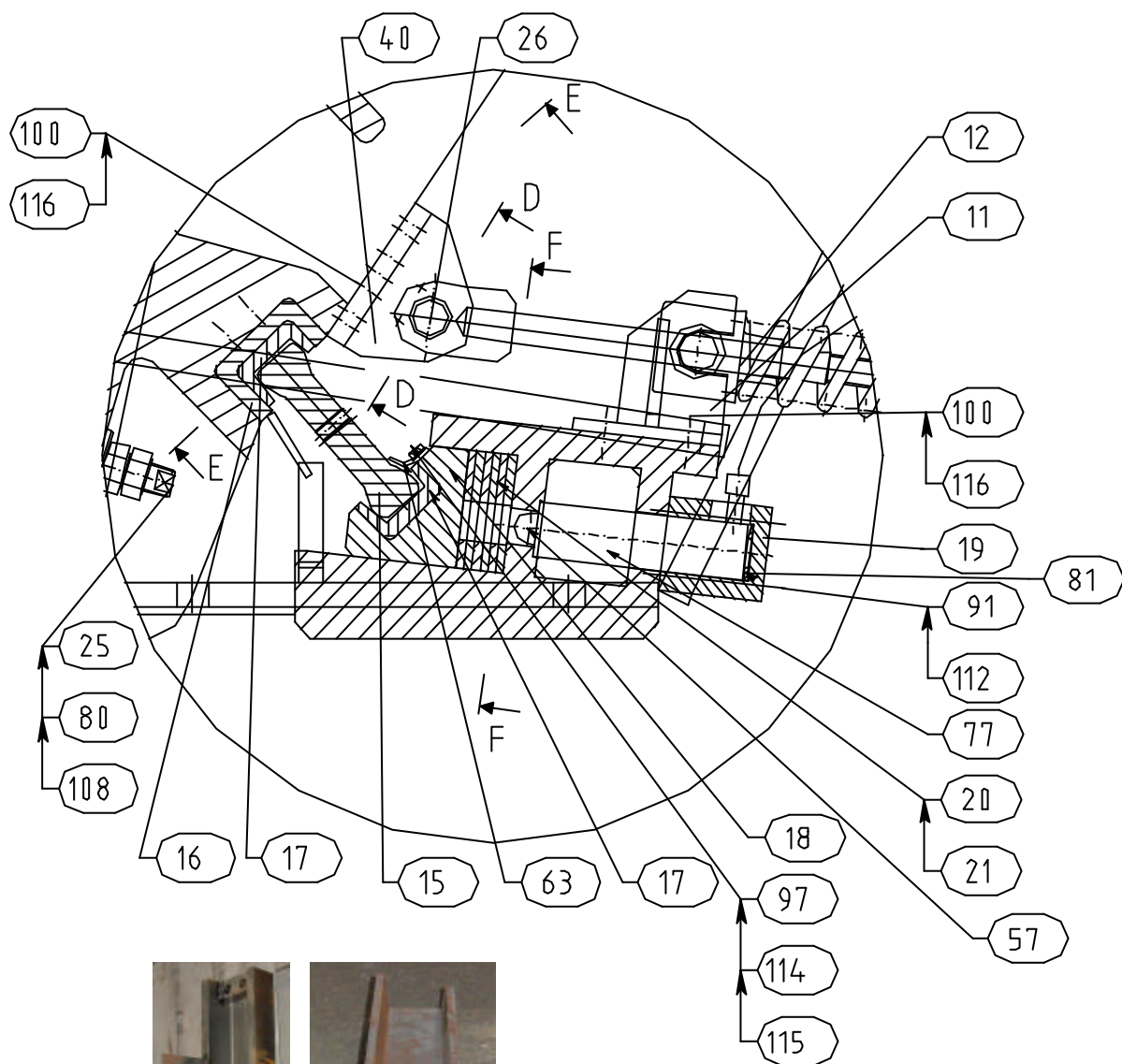


SPARE PARTS PC 10/55J

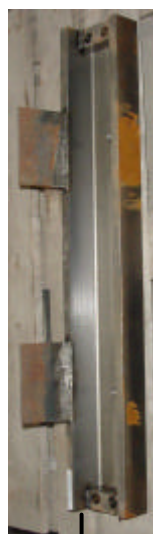


SPARE PARTS PC 10/55J

Detail Z



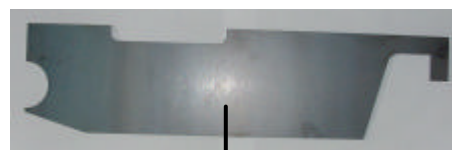
15



16



17

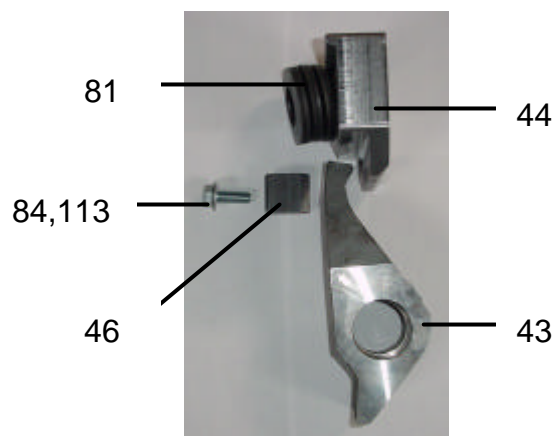
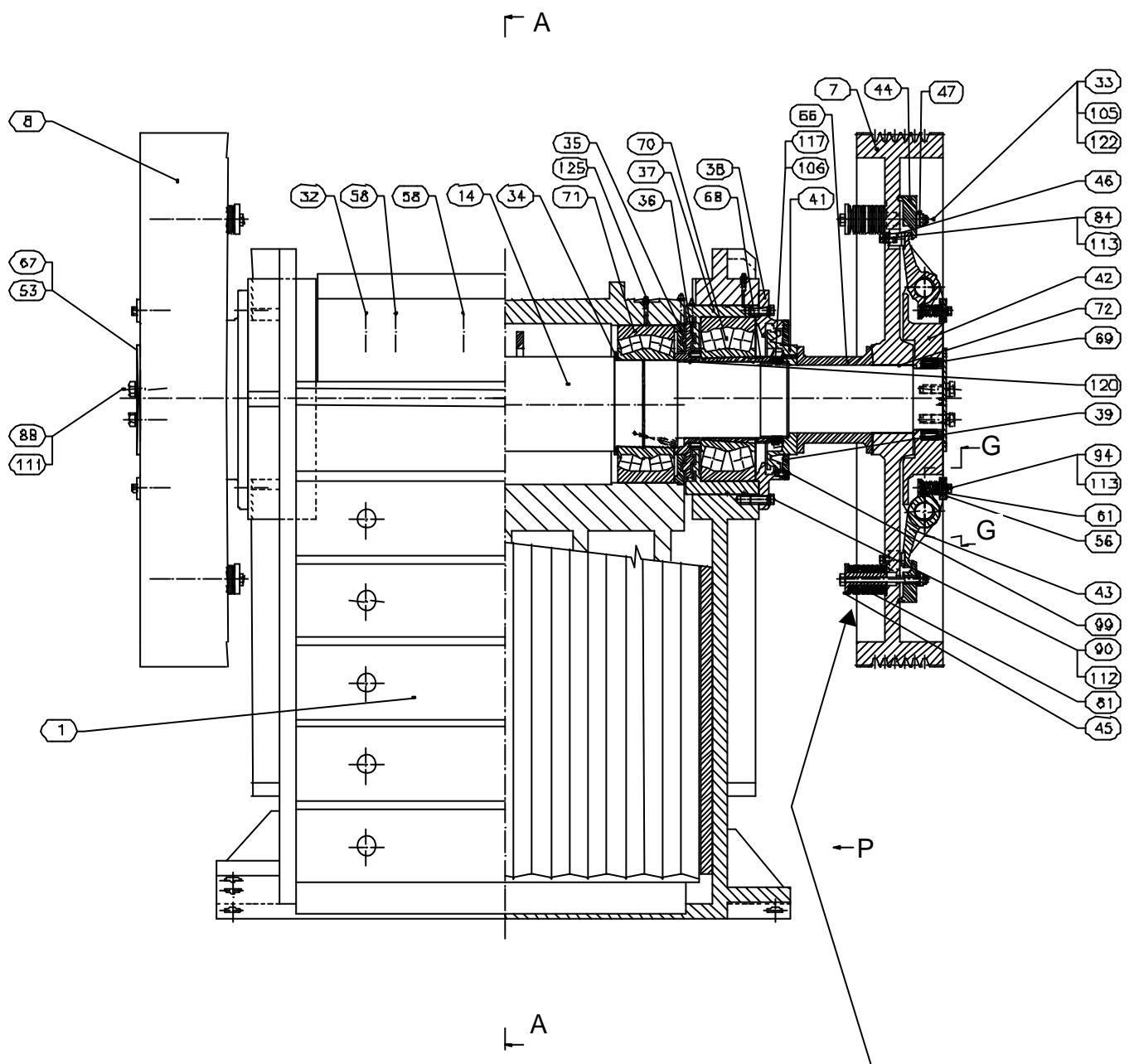


21



77

SPARE PARTS PC 10/55J



SPARE PARTS PC 10/55J

Pos.	Quant.	Designation	ART. NR.
1	1	Frame	BB105.011.00.00Ba
2	1	Pendulum	BB105.02.00.00B
3	1	Moving jaw	BB105.03.00.00Cb
4	1	Fixed jaw	BB105.04.00.00Cb
5	1	Anchor of jaw I	BB105.05.00.00C
6	1	Pendulum cover	BB105.06.00.00C
7	1	V-belt pulley	BB15.07.00.00C
8	1	Flywheel	BB15.08.00.00C
9	1	Anchor of jaw II	BB105.091.00.00C-
10	4	Anchor bolt	BB15.10.00.00Da
11	2	Bracket	PC1055.13.98.00b
13	2	Spring support	PC1055.13.98.05b
14	1	Eccentric shaft	BB105.14.00.00C-
15	1	Toggel plate	J1055.15.00.00D
16	1	Bed I	J1055.161.00.00D
17	2	Bed II	BB105.17.00.00E
18	1	Support	BB105.181.00.00C
19	1	Bracket	BB105.19.00.00D
20	20	Steel plate I	BB105.20.00.00E
21	2	Steel plate II	BB105.21.00.00E
24	2	Pull rod	BB105.24.00.00E
25	2	T-Bolt	BB18.25.00.00E
26	2	Pin	BB18.261.00.00E
27	4	Pin ø45f7	BB15.27.00.00E
28	1	Wear Plate I	J1055.281.00.00EL
28a	1	Wear Plate I	J1055.281.00.00ER
29	1	Wear Plate II	J1055.291.00.00EL
29a	1	Wear Plate II	J1055.291.00.00ER
32	2	Bolt M30 h6 x 320	BB18.32.00.00D
33	8	Bolt M16	BB15.33.00.00E
34	2	Distance ring	BB15.34.00.00E
35	2	Cover	BB15.35.00.00Dd
36	2	Inside labyrinth	BB105.36.00.00De
37	2	Bearing bush	BB15.371.00.00C
38	2	Cover	BB15.38.00.00B
39	2	Cover	BB15.39.00.00D
40	1	Holder	BB105.401.00.00D
41	2	Holding down cover	BB15.41.00.00C
42	2	Nave	BB15.42.00.00C
43	4	Lever	BB15.43.00.00D
44	4	Support	BB15.44.00.00E
45	8	Tube	BB15.45.00.00E
46	4	Tooth	BB15.46.00.00E
47	8	Lock washer	BB15.47.00.00E
48	2	Weight I	BB105.48.00.00E
49	4	Weight II	BB105.49.00.00E
50	2	Weight III	BB105.50.00.00E
51	4	Side stop	BB105.511.00.00E
52	1	Holder	BB15.52.00.00C
53	2	Cover	BB15.53.00.00D

SPARE PARTS PC 10/55J

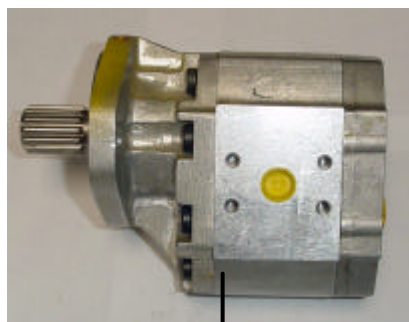
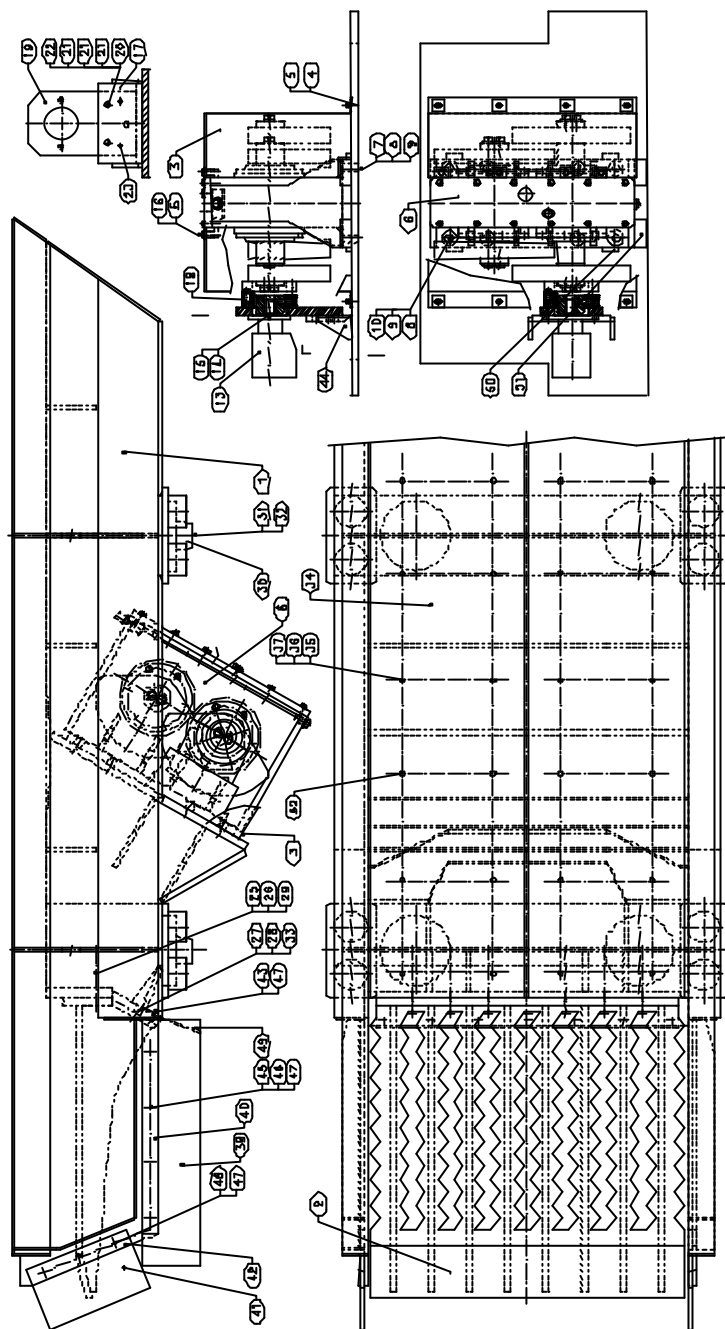
54	2	Door	BB105.541.00.00D
55	1	Hook	BB105.55.00.00E
56	4	Plate	BB15.56.00.00E
57	1	Pin	BB15.57.00.00E
58	4	Bolt M30x320	BB18.58.00.00D
60	2	Spring	FEDDRUCK360/35/160
61	8	Spring	BB15.61.00.00E
64	5	Bolt M30 x 180	BB18.64.00.00D
66	1	Ring	BB105.66.00.00E
67	2	O-Ring	ORING220X5
68	2	Bush	LAGAOH2340
69	2	Lock ring	LAGRF160/210
70	2	Bearing	LAG22340
71	2	Bearing	LAG23244
72	2	Plain bearing	LAGMB170100DU
73	2	Plain bearing bush	LAG455350GM
74	8	Plain bearing	LAGMB4530DU
75	1	Hand pump	ENERARM0,66L
76	1	Hose for hydr. pump	ENERGUM2000
77	1	Hydr. cylinder	ENERRC156
79	4	Washer 31	BB18.79.00.00E
80	2	Washer 37	BB18.80.00.00E
81	129	Belleville washer	FEDER071
82	10	Washer 21	BB18.82.00.00Eb
83	6	Plate 50	BB18.83.00.00E
84	4	Bolt DIN933 - 8.8 M12x35	SKSCHM12/35/8.8/931
85	2	Bolt DIN933 - 8.8 M24x45	SKSCHM24/45/8.8/933
86	4	Bolt DIN931-8.8 M20x160	SKSCHM20/160/8.8/931
87	10	Bolt DIN931 - 8.8 M20x80	SKSCHM20/80/8.8/931
88	6	Bolt DIN933 - 8.8 M20x50	SKSCHM20/50/8.8/933
89	8	Bolt DIN931 - 8.8 M20x80	SKSCHM20/80/8.8/931
90	24	Bolt DIN933 - 8.8 M16x50	SKSCHM16/50/8.8/933
91	4	Bolt DIN 912 - 8.8 M16x150	ZYSCHM16/150/8.8/912
92	19	Bolt DIN933 - 10.9 M24x80	SKSCHM24/80/10.9/933
93	4	Bolt M20x90 DIN 931-8.8	SKSCHM20/90/8.8/931
94	8	Bolt DIN933 - 8.8 M12x30	SKSCHM12/30/8.8/933
97	30	Bolt DIN933 - 8.8 M10x25	SKSCHM10/25/8.8/933
99	12	Bolt DIN 963 - 8.8 M10x25	SKSCHM10/25/8.8/963
100	27	Bolt DIN933-8.8 M20x55	SKSCHM20/55/8.8/933
103	20	Nut DIN 934 - 8 M30	SKM30/934/8
105	8	Nut DIN 935 - 8 M16	SKM16/935/8
106	2	Nut KM38 M190x3	LAGKM38
107	8	Nut DIN 934 - 8 M20	SKM20/934/8
108	8	Nut DIN 934 M36	SKM36/934/8
109	17	HV-Washer DIN 6916 31	SCHEIBEHVM36
110	14	Washer 25 DIN 6916	SCHEIBEM24/6916
111	6	Washer 20 DIN 127	SCHEIBEM20/127
112	28	Washer 17 DIN 6916	SCHEIBEM16/6916
113	12	Washer 13 DIN 6916	SCHEIBEM12/6916
114	30	Washer 10 DIN 127	SCHEIBEM10/127
116	39	Washer 21 DIN 6916	SCHEIBEM20/6916
117	2	Washer MB38	LAGMB38

SPARE PARTS PC 10/55J

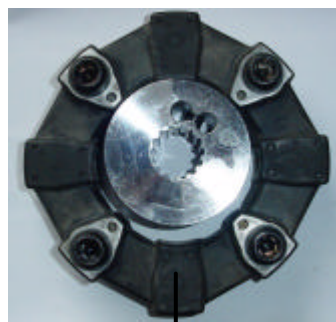
118	7	Belleville washer 50x25.4x3	FEDER050
119	2	Washer 37 DIN 125	SCHEIBEM36/125
120	2	Feather key 10x8-32	PAßFEDER10/8/32
122	8	Cotter pin 4x32 DIN 94	SPLINT4/32/94
125	8	Greasing head KM10x1	SCHMIERNH1M10/1

SPARE PARTS PC 10/55J

3 VIBRATING CHUTE



13



18

SPARE PARTS PC 10/55J

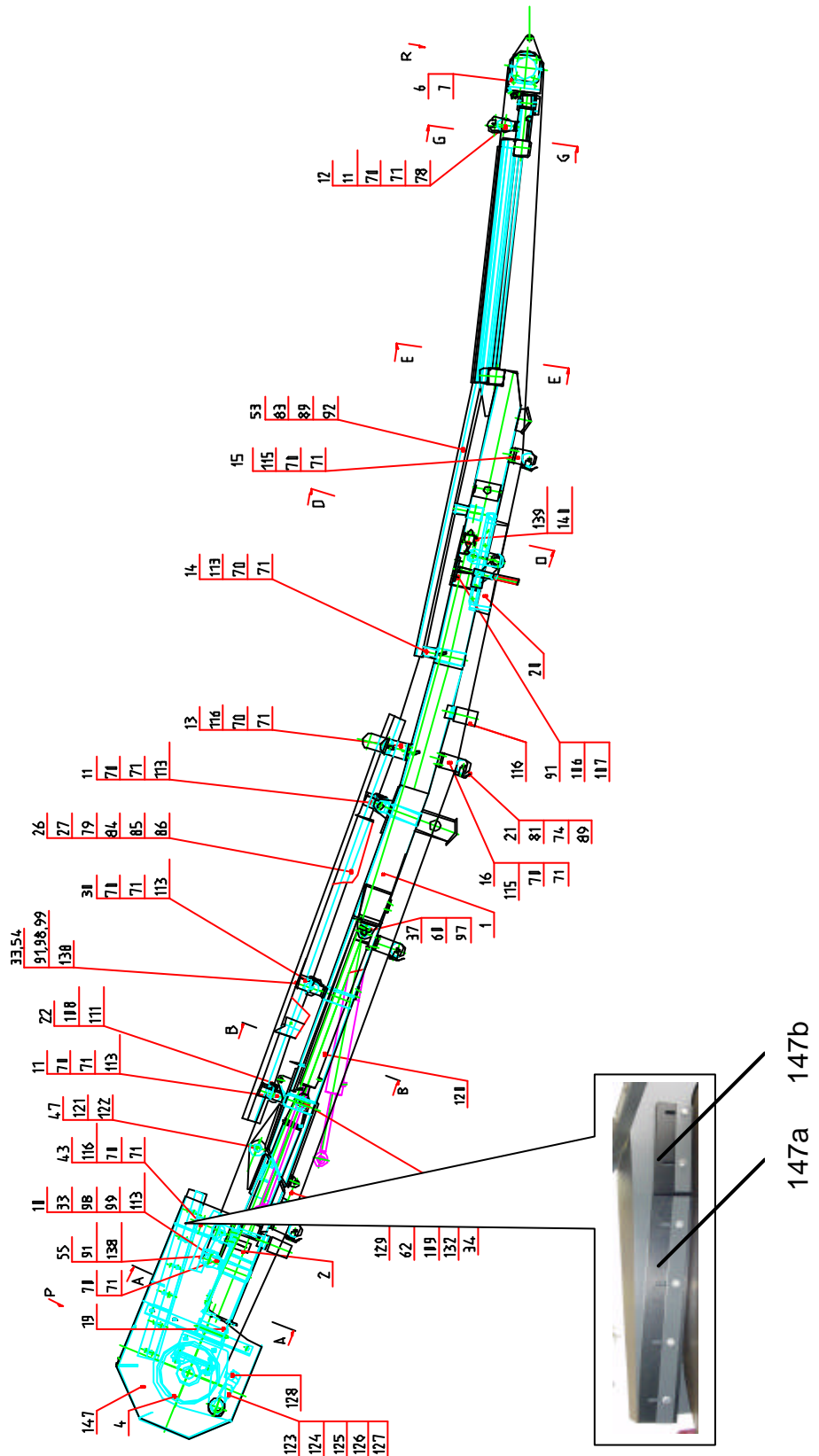
Pos.	Quant.	Designation	ART. NR.
1	1	Vibro-frame	MT03P.41.01.00B
2	1	Rost 40	MT03B.40.02.90C
3	1	Cover	KM03B.42.03.00B
4	7	Bolt M10x25 DIN 933-8.8	SKSCHM10/25/8.8/933
5	15	Washer 10.5	SCHEIBEM10/125
6	1	Vibro-Gearbox complete	VG03.00.00.00B
7	6	Bolt M24x100	SKSCHM24/100/10.9
8	16	Nut M24 DIN 934 – 8	SKM24/934/8
9	16	HV - Washer 25 DIN 6916	SCHEIBEHVM24
10	2	Bolt M24x100	KM03P.41.10.00E
13	1	Hydr. motor	HYMZR3050M3AAP
14	2	Bolt M12x35 DIN 933-8.8	SKSCHM12/35/8.8/933
15	2	HV - Washer 13 DIN 6916	SCHEIBEHVM12
16	8	Bolt M10x45 DIN 933-8.8	SKSCHM10/45/8.8/933
17	1	Plate	MT03P.41.17.00E
18	1	Clutch	KUPCF180PROFIL
19	1	Holder	MT03P.41.19.00E
20	3	Bolt M16x80 DIN 933-8.8	SKSCHM16/80/8.8/933
21	6	Nut M16 DIN 934 – 8	SKM16/934/8
22	3	HV - Washer 17 DIN 6916	SCHEIBEHVM16
25	7	Bolt M30x120 DIN931-8.8	SKSCHM30/100/8.8/931
26	7	HV - Washer 31 DIN 6916	SCHEIBEHVM30
27	7	Bolt M20x80 DIN 931 - 8.8	SKSCHM20/80/8.8/931
28	7	HV - Washer 21 DIN 6916	SCHEIBEHVM20
29	14	Nut M30 DIN 934 - 8	SKM30/934/8
30	4	Rubber holder	MT03P.41.30.00E
31	4	Bolt M16x70 DIN 931 - 8.8	SKSCHM16/70/8.8/931
32	4	HV - Washer 17 DIN 6916	SCHEIBEHVM16
33	14	NutM20 DIN 934 - 8	SKM20/934/8
34	2	Plate	MT03P.41.34.00E
35	28	Bolt M12x35 DIN 7991	SKSCHM12/35/8.8/7991
36	32	Washer 13 DIN 125	SCHEIBEM12/125
37	32	Nut M12 DIN 985	SKM12/985
43	7	Bolt M12x20 DIN 931 - 8.8	SKSCHM12/20/8.8/931
45	8	Bolt M12x45 DIN 931 - 8.8	SKSCHM12/45/8.8/931
46	8	Nut M12 DIN 985	SKM12/985
47	27	Washer 13 DIN 125	SCHEIBEM12/125
48	12	Bolt M12x30 DIN 931 - 8.8	SKSCHM12/30/8.8/931
49	1	Plate	MT03P.41.49.00D
52	4	Bolt M12x45 DIN 7991	SKSCHM12/45/8.8/7991

Parts of Vibro gearbox

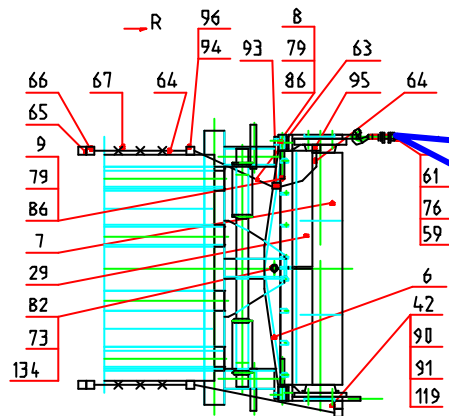
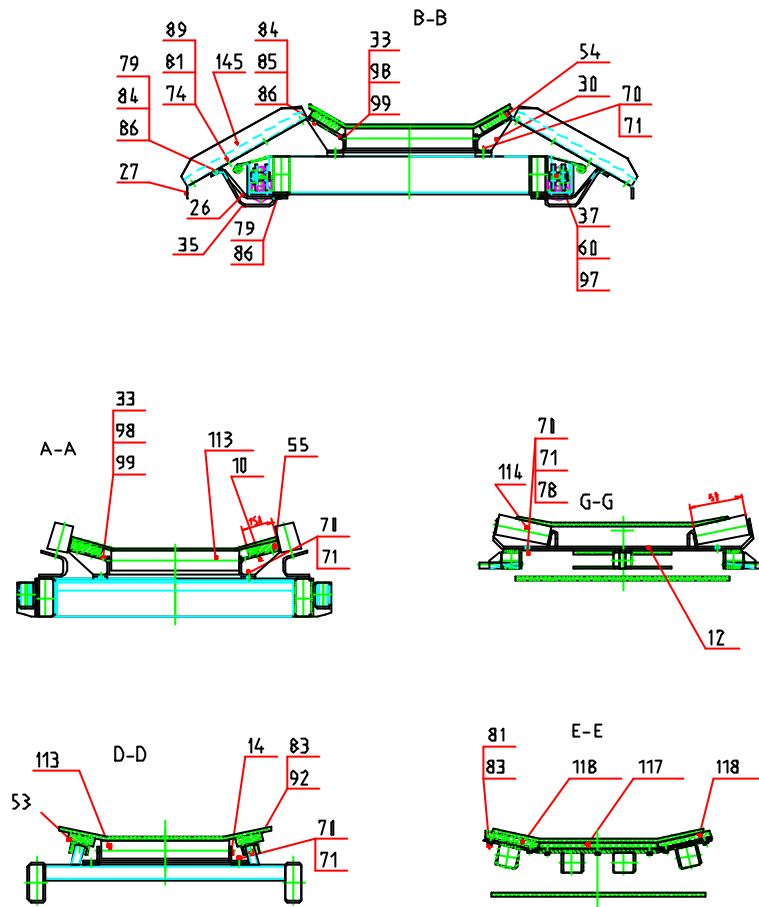
	4	Bearing	LAG22315
	4	Feather	VG03.17.00.00E
	4	Feather	PAßFEDER18/11/56
	1	Airation filter	HYFILBFP4G10
	4	Oil-seal ring	WDR85/110/13
	4	O – ring	ORING72X3

SPARE PARTS PC 10/55J

4 MAIN CONVEYOR BELT



SPARE PARTS PC 10/55J



41

POS.	QUANT.	DESIGNATION	ARTICLE NO. :
1	1	FRAME 1	MT03B.53.01.00 Ba
2	1	FRAME 2	MT03B.53.02.00 Ca
4	1	DRIVING DRUM	MT03P.57.04.00.00Bb-
6	1	DRUM HOLDER	MT03P.52.06.00 C
7	1	REVERSING DRUM	MT03B.52.07.00 D
8	2	HOLDER	MT03B.52.08.00 E
9	1	HOLDER	MT03B.52.09.00 D
10	1	PULLEY CARRIER 1	MT03B.52.10.00 C

SPARE PARTS PC 10/55J

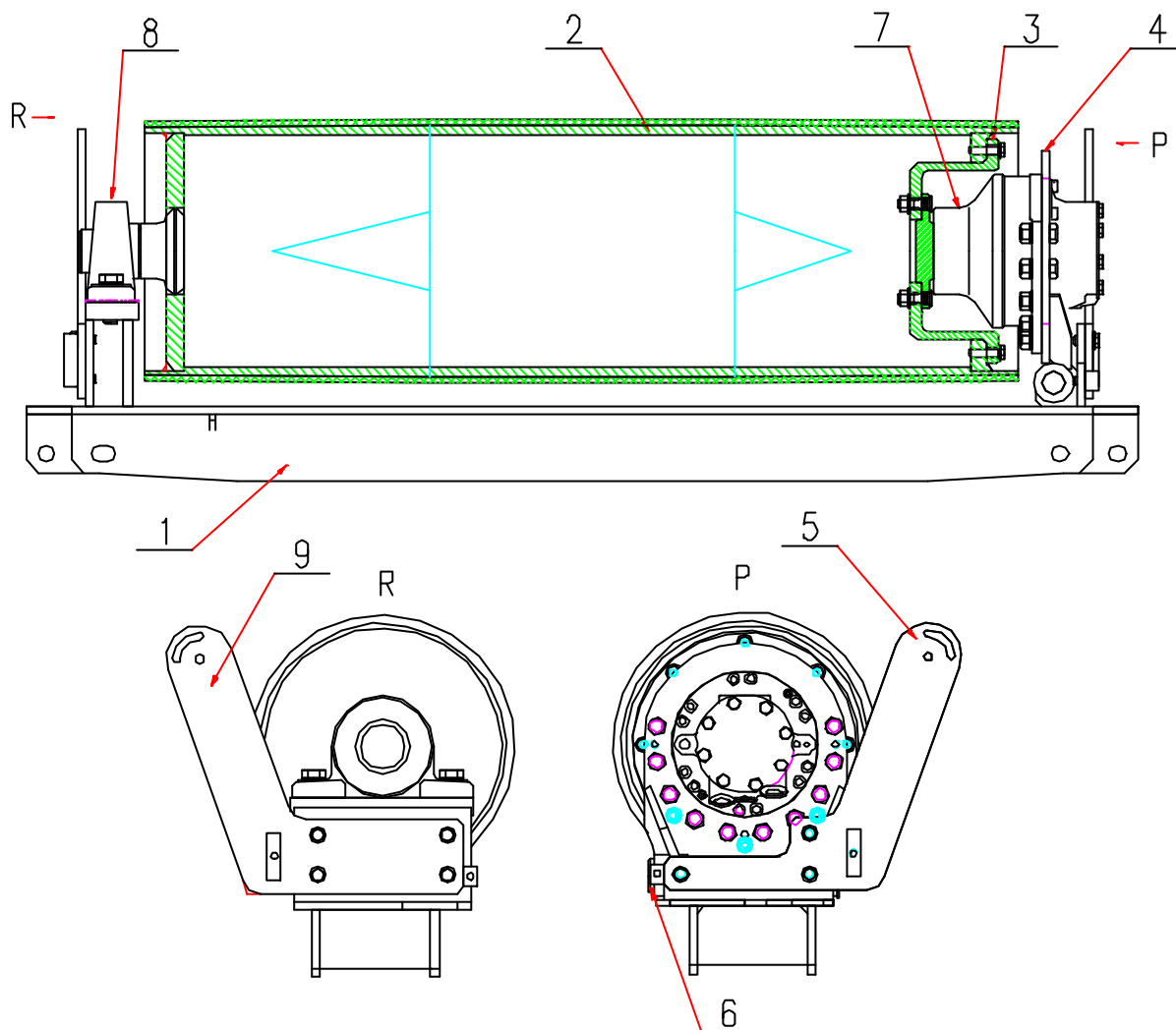
11	2	PULLEY CARRIER 2	MT03B.52.11.00 C
12	1	PULLEY CARRIER 3	MT03B.52.12.00 C
13	2	HOLDER	MT03B.52.13.00 D
14	2	PULLEY CARRIER	MT03B.51.14.00 D
15	2	HOLDER	MT03B.52.15.00 D
16	6	HOLDER	MT03P.50.16.00 D
19	2	HOLDER	MT03B.52.19.00 D
20	1	BELT CLEANER	MT03P.56.20.00 E
21	4	COVER	MT03B.52.21.00 D
22	4	COVER	MT03B.52.22.00 D
23	2	BOLT M24X400	MT03B.52.23.00 E
24	2	FORK	MT03B.52.24.00 E
25	2	PIN	MT03P.50.25.00 E
26	4	HOLDER	MT03B.52.26.00 D
27	2	PLATE	MT03B.53.27.00 Da
29	2	CLEANING PLATE	MT03B.52.29.00 D
30	1	PULLEY CARRIER IV	MT03B.52.30.00 C
33	4	PLATE	MT03B.52.33.00 E
34	2	PIN 22	MT03B.52.34.00 E
35	2	LEVEL	MT03B.53.35.00 D
37	2	PIN Ø34/82	MT03B.53.37.00 E
41	2	BOLT	252.20.00.5901
42	2	COVER	MT03P.55.42.00 E
43	2	HOLDER	MT03B.52.43.00 D
47	2	PIN	MT03B.53.47.00 E
53	2	ROBALON	ROB40/120/1730
54	2	ROBALON	ROB40/150/2650+ROB40/150/1100
55	2	ROBALON	ROB40/150/850
59	4	WASHER	MT03B.52.59.00 E
60	4	HOLDER	MT03B.53.60.00 E
61	4	NUT M20	SKM20/934/8
62	2	WASHER 23	SCHEIBEM24/125
65	2	GREASING HEAD KM 10X1	SCHMIERNH1M10/1
70	34	BOLT M16X40	SKSCHM16/40/8.8/933
71	34	WASHER 17	SCHEIBEM16/125
72	2	NUT M20	SKM20/985/5
73	6	WASHER 25	SCHEIBEM24/125
74	8	WASHER 10.5	SCHEIBEM10DIN125
75	6	NUT	SKM24/934/8
76	10	WASHER	SCHEIBEM20/125
78	2	NUT	SKM16/934/8
79	20	BOLT	SKSCHM12/35/8.8/933
80	2	BOLT	SKSCHM20/220/8.8/931
81	72	BOLT	SKSCHM10/25/8.8/933
82	1	BOLT	SKSCHM24/150/8.8/931
83	74	WASHER	SCHEIBEM10DIN127
84	19	NUT	SKM12/934/8
85	12	BOLT	ZYSCHM12/35/8.8/912
86	35	WASHER	SCHEIBEM12/125

SPARE PARTS PC 10/55J

88	2	COTTER PIN	SPLINT6,3/45/94
89	36	NUT	SKM10/934/8.8
90	8	BOLT	SKSCHM16/90/8.8/931
91	28	NUT	SKM16/985/8
92	18	BOLT	ZYSCHM10/35/8.8/912
97	4	BOLT	ZYSCHM10/16/8.8/912
98	4	BOLT	SKSCHM8/12/8.8/933
99	4	WASHER	SCHEIBEM8/125
105	12	NUT	SKM16/934/8
106	16	BOLT	SKSCHM16/50/8.8/933
107	14	WASHER	SCHEIBEM16/125
108	9	BOLT	SKSCHM12/20/8.8/933
109	2	COTTER PIN	SPLINT5/32
111	8	WASHER	SCHEIBEM12/125
112	1	RIP-STOP BELT	GURTTR1000/21050
113	6	ROLLER	ROLTR89/600
114	2	ROLLER	ROLTR89/250
115	4	ROLLER	ROLTR89/1150
116	8	ROLLER	ROLSF89/132
117	1	SANPRO PLATE	GUMSA550/1500
118	2	SANPRO PLATE	GUMSA250/1500
119	2	BEARING	LAGUCFC212
120	2	HYDR. CYLINDER	HYZY80/45/800R
121	2	WASHER	SCHEIBEM40/125
122	2	COTTER PIN	SPLINT8/63/94
123	2	ROSTA	ROSTASANNSE27
124	2	ROSTA HOLDER	ROSTAHALTSE27
125	2	BOLT	SKSCHM12/50/8.8/933
126	2	NUT	SKM12/934/8
127	2	WASHER	SCHEIBEM12/125
128	1	STRIPPER	GUMKWA1000
129	2	NUT	SKM24/6331/8
130	2	WASHER	SCHEIBEM24/125
132	2	BOLT WITH EYE	A-SCHM24/180
134	1	NUT	SKM24/985/8
135	1	WASHER	SCHEIBEM12/125
147	1	COVER - ASSEMBLY	MT03B.53.147.00B
147a	2	ROBALON	MT03P.57.147.03D
147b	2	ROBALON	MT03P.57.147.02E

SPARE PARTS PC 10/55J

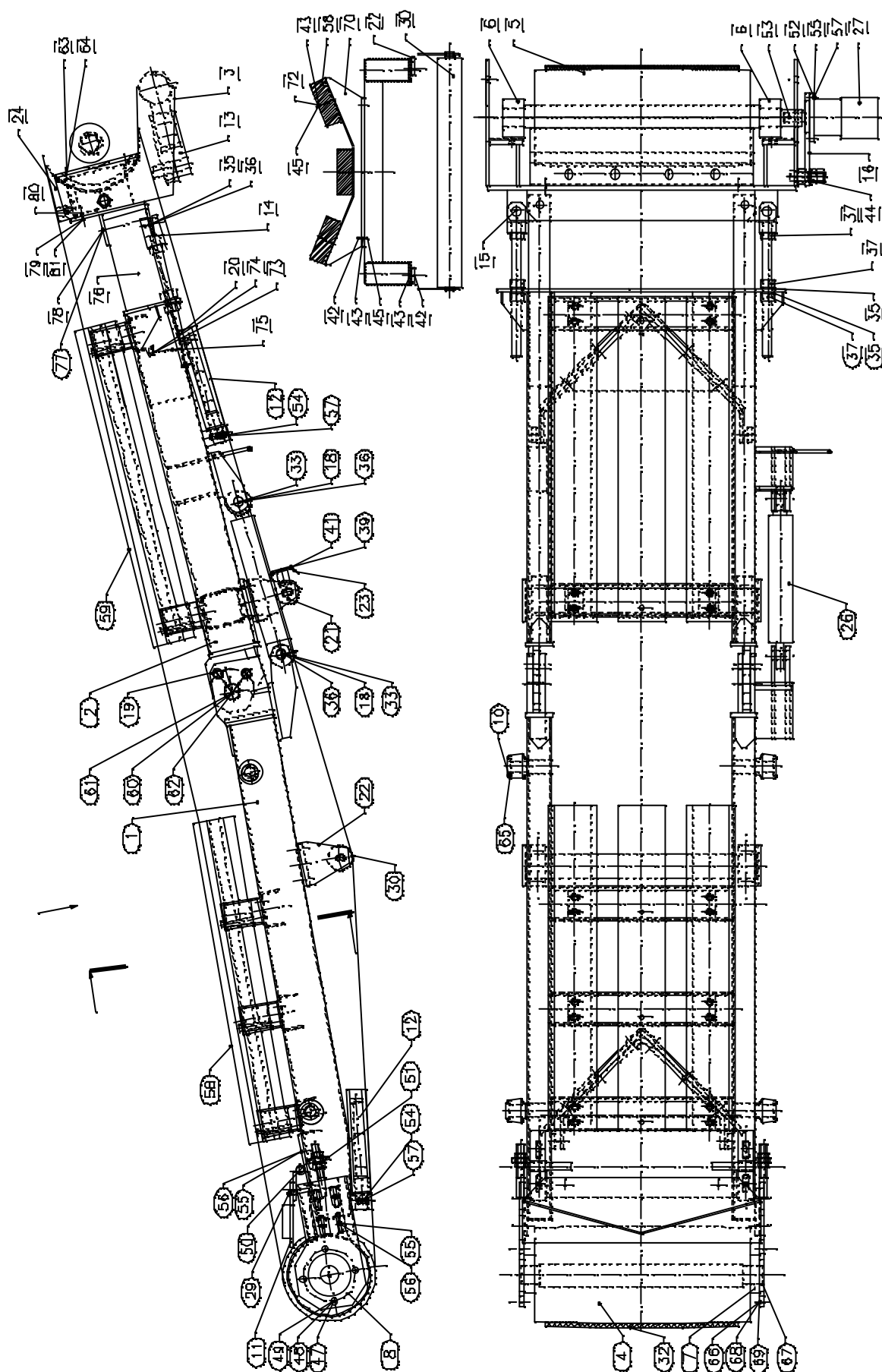
4.1 DRIVING DRUM



Pos.	Quant.	Designation	Article No.
1	1	DRUM CARRIER	MT03B.53.04.01.00B-
2	1	DRUM – WELDMENT	MT03B.53.04.02.00B-
3	1	PLATE 3	MT03P.57.04.03.00Ea-
4	1	MOTOR CARRIER	PC1275.05.041.04C
5	1	SCRAPER HOLDER	MT03B.53.04.05.00D-
6	1	PIN Ø35	MT03B.53.04.06.00E-
7	1	HYDRAULIC GEARBOX WITH MOTOR	HYMMSE05V
8	1	BEARING	LAGUCP213
9	1	SCRAPER HOLDER 2	MT03B.53.04.09.00D-

SPARE PARTS PC 10/55J

5 SIDE CONVEYOR BELT



SPARE PARTS PC 10/55J

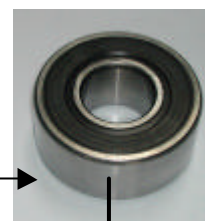
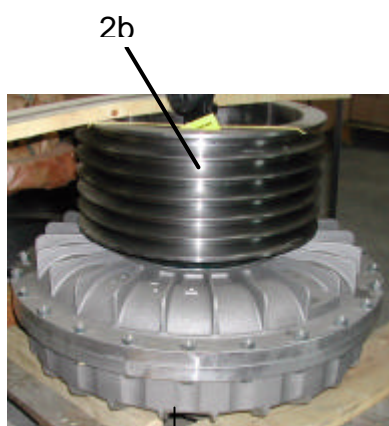
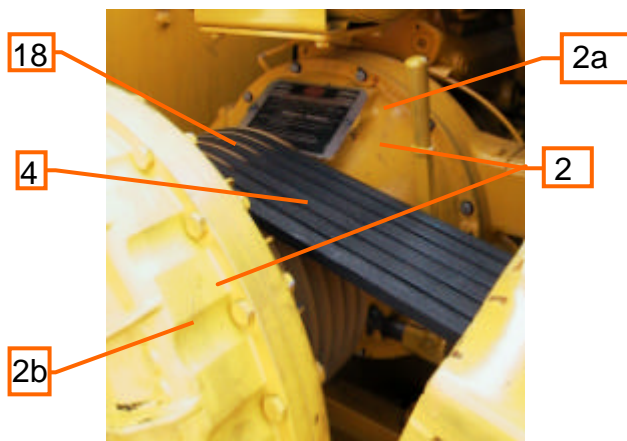
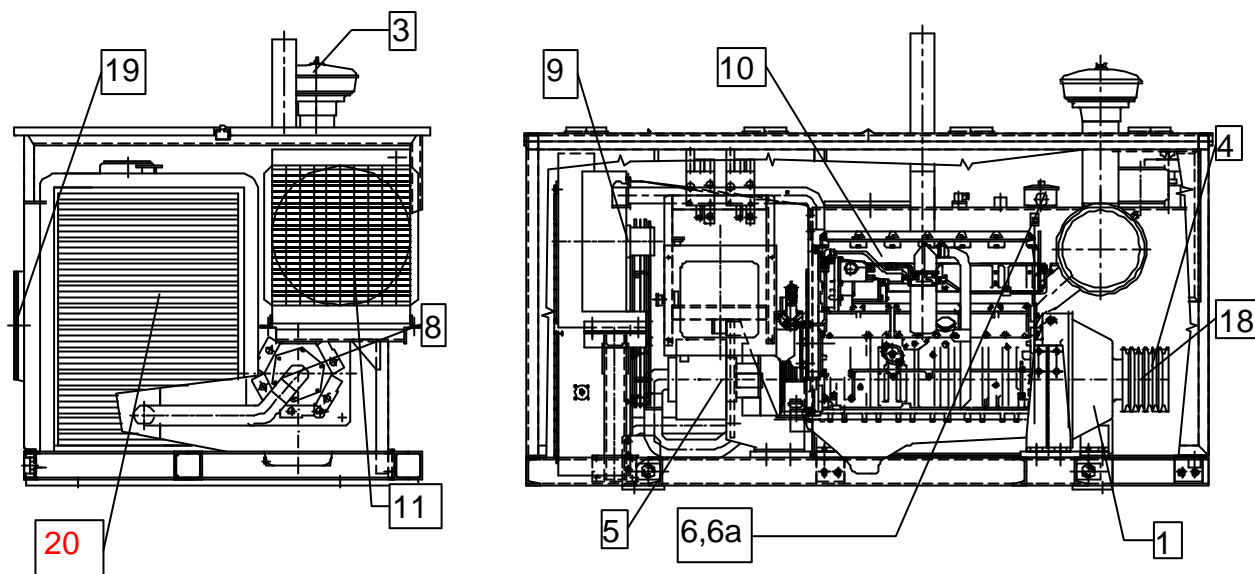
Pos.	Quant.	Designation	Article No.
1	1	Frame I	MT03B.92.01.00B
2	1	Frame II	MT03B.93.02.00B
3	1	Drum holder	MT03B.93.03.00B
4	1	Reversing drum	MT03P.91.04.00C
5	1	Drive drum	MT03P.92.05.00D
6	2	Bearing	LAGUCP210
7	2	Bearing	LAGUCFC210
8	2	Shackle	MT03B.92.08.00D
10	4	Guide roller	MT03B.92.10.00E
11	1	Drum scrapper	MT03B.92.11.00C
12	2	Belt scrapper	MT03B.93.12.00D
13	1	Scrapper	MT03P.90.13.00C
15	2	Pin 24	MT03P.90.15.00E
16	1	Lever	MT03P.92.16.00D
18	2	Pin	MT03B.92.18.00E
19	2	Pin	MT03B.92.19.00D
20	2	Bolt M24	MT03P.93.20.00E
21	2	Holder II	MT03B.92.21.00D
22	2	Holder	MT03B.92.22.00D
23	1	Plate	MT03B.92.23.00D
24	1	Cover	MT03P.93.24.00D
26	1	Hydr. cylinder	HYZY60/36/200R
27	1	Hydr.motor Danfoss	HYM315/250OMP0617
29	2	Shackle	MT03B.92.29.00E
30	2	Roller	ROLTR63/600
32	1	Belt	GURT500/6800
33	2	Washer	SCHEIBEHVM26
35	6	Washer	SCHEIBEHVM24
36	4	Cotter pin	SPLINT6,3/45
37	6	Nut	SKM24/934/8
39	2	Bolt	SKSCHM8/20/8.8/933
41	2	Washer	SCHEIBEM8/125
42	28	Bolt	SKSCHM10/25/8.8/933
43	48	Washer	SCHEIBEM10/125
44	2	Nut	SKM20/934/8
45	20	Nut	SKM10/934/8
47	8	Bolt	SKSCHM14/60/8.8/933
48	8	Nut	SKM14/934/8
49	8	Washer	SCHEIBEM14/125
50	4	Nut	SKM16/934/8
51	4	Washer	SCHEIBEM16/125
52	2	Bolt	SKSCHM12/40/8.8/933
53	1	Bolt	SKSCHM6/10/8.8/933
54	4	Bolt	SKSCHM12/30/8.8/933
55	14	Washer	SCHEIBEM12/125
56	12	Bolt	SKSCHM12/25/8.8/933
57	10	Nut	SKM12/934/8
58	3	Bar	MT03P.93.58.00D
59	3	Bar	MT03P.93.59.00D
60	2	Bolzen	MT03B.92.60.00E

SPARE PARTS PC 10/55J

61	2	Splint	SPLINT8/56
62	2	Washer	SCHEIBEHVM40
63	4	Bolt	SKSCHM16/60/8.8/933
64	4	Washer	SCHEIBEM16/125
67	2	Greasing head	SCHMIERNH1M10/1
70	5	Carrier	MT03B.92.70.00C
72	15	Bolt	SKSCHM12/40/8.8/933
73	2	Eye	MT03P.93.73.00E
76	2	Carrier	MT03P.93.76.00D
77	2	Bolt	SKSCHM16/150/8.8/931
78	2	Nut	SKM16/934/8
79	3	Bolt	SKSCHM12/35/8.8/931
80	18	Nut	SKM12/934/8
81	18	Washer	SCHEIBEM12/125
82	3	Plate 1	MT03P.93.82.00D
83	3	Plate 2	MT03P.93.83.00D

SPARE PARTS PC 10/55J

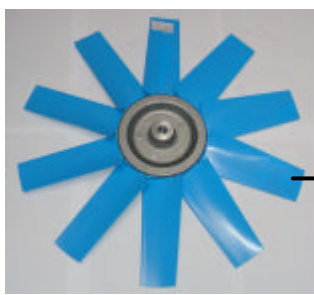
6 DRIVING UNIT



2c

SPARE PARTS PC 10/55J

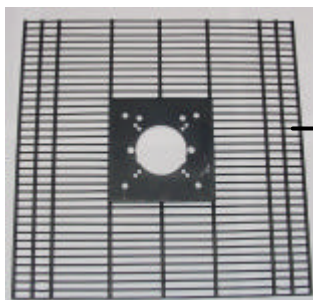
Pos.	Quant.	Designation	ART. NR.
2	1	CLUTCH TWIN DISC CONSISTING OF	KUPSP211+17KSI
2a	1	MANUALLY CLUTCH SP211	KUPSP211HP2
	1	REPAIRSET FOR CLUTCH SP 211	KUPSP211REPSATZ
2b	1	FLUID CLUTCH	KUP17KSI
2c	1	PILOT BEARING OF CLUTCH	KUPSP211PIL
2d	1	SAFTY MELTING SCREW	KUPSCHMELZ175
2e	1	BOLT FOR MOUNTING THE FLUID CLUTCH	SKSCHM20/210/10/933
3	1	PREE AIR CLEANER	MOTCT3126TURBOCL
4	6	V-BELT	KRN6700SPC
5	1	COUPLING FOR HYDRAULIC PUMP	KUPCF0270
6	1	HYDRAULIC OIL FILTER COMPLETE	HYFILRLTEF426
6a	1	FILTER ELEMENT FOR POS 6	HYFILES01.E425109
8	1	HYDRAULIC MAIN PUMP	HYPP4FACHLI32CCM
9	1	HYDRAULIC MOTOR FAN-DRIVE FOR WATER COOLER	HYMZR2026/GR2
10	1	ENGINE CATERPILLAR	MTCT3126B
11	1	OIL COOLER COMPLETE	HYLKS02611
11a	1	FAN FOR OILCOOLER	HYLKÖKO050-5FLÜGEL
11b	1	PROTECTION GRID	HYLKS02611-GITTER
11d	1	HYDRAULIC MOTOR FOR OIL COOLER	HYLKÖKOMOT11
13	1	FUEL PUMP COMPLETE	HYBETANKPUMPE
18	1	V-BELT PULLEY	KRS224/6SPC
19	1	O-RING FOR MANHOLE	ORING340X5
20	1	WATER COOLER COMPLETE	MTCT3126BCOOLER
21	1	SUCTION HOSE FOR PUMP	HYSSNW70/1000



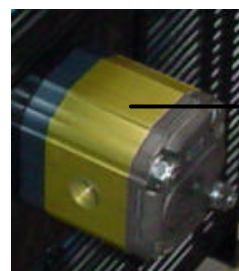
11a



11



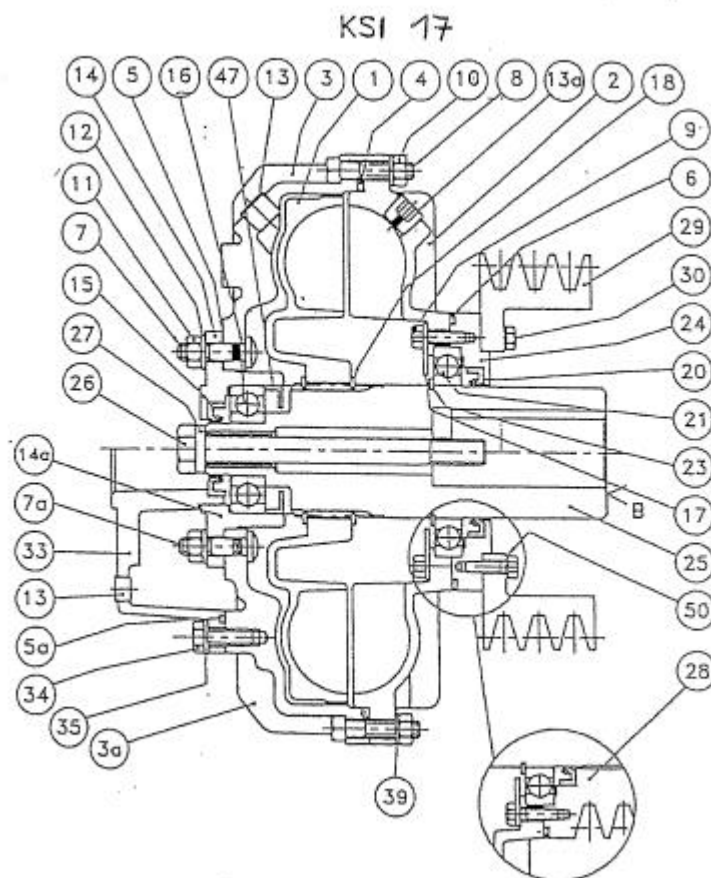
11b



11d

SPARE PARTS PC 10/55J

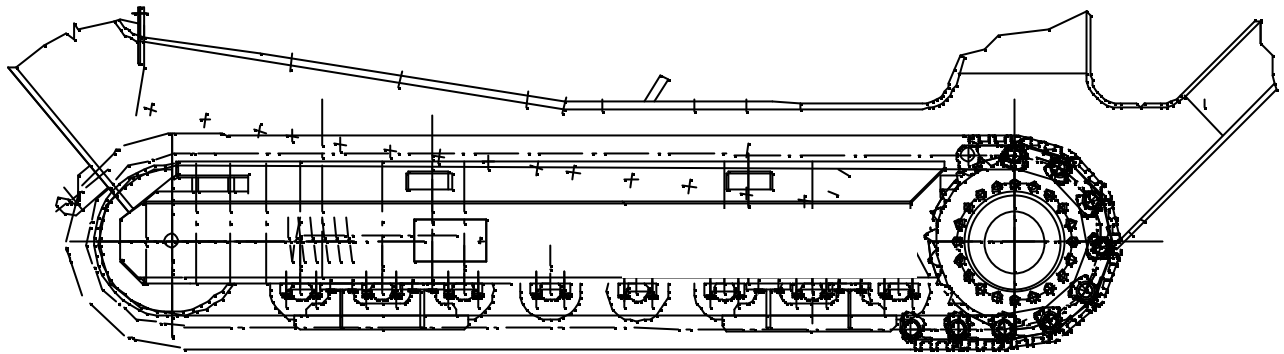
6.1 FLUID CLUTCH KUPKSI17



Pos.	Quant.	Designation	Article no.
1	1	INNER IMPELLER	KUP17KSI/POS1
2	1	OUTER IMPELLER	KUP17KSI/POS2
4	1	SEAL RING	KUP17KSI/POS4
5	1	SEAL RING	KUP17KSI/POS5
6	1	SEAL RING	KUP17KSI/POS6
13	1	PLUG	KUP17KSI/POS13
13a	1	SAFETY PLUG	KUPSCHMELZ175
15	1	SEAL RING	WDR54/85/10-VITON
16	1	BEARING	LAG6212C3
20	1	SEAL RING	WDR130/160/12-VITON
21	1	BEARING	LAG6024C3
47	1	SEALING	KUP17KSI/POS47
	1	SEAL KIT COMPLETE	KUP17KSIDICHTSATZ

SPARE PARTS PC 10/55J

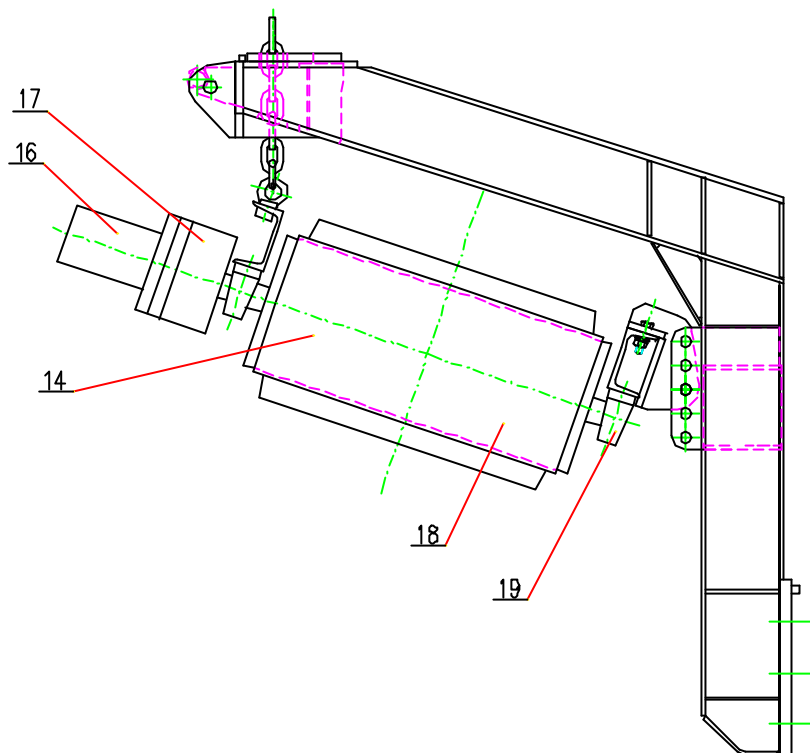
7 CHAIN DRIVE



Pos.	Designation	ART. NR.
1	CRAWLER-CHAINSET	See attachments of user manual
2	CHAIN REPAIRSET without bottom plate	LW503REPSETKETHSW
3	GEAR DRIVE SET	LWGETMAG85VP11

SPARE PARTS PC 10/55J

8 MAGNETIC SEPARATOR



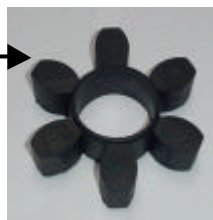
Pos.	Quant.	Designation	ARTICLE-No.
14	1	MAGNET SEPARATOR COMPLETE	MAGNETBAND1000
16	1	MOTOR	HYM495EATON
17	1	CLUTCH	KUPKOMPCP20/100
17a	1	RUBBER PART OF CLUTCH	KUPSTERNCP20/100
18	1	BELT	MAGNET503GURT
19	2	BEARING	LAGUCP208



16



17



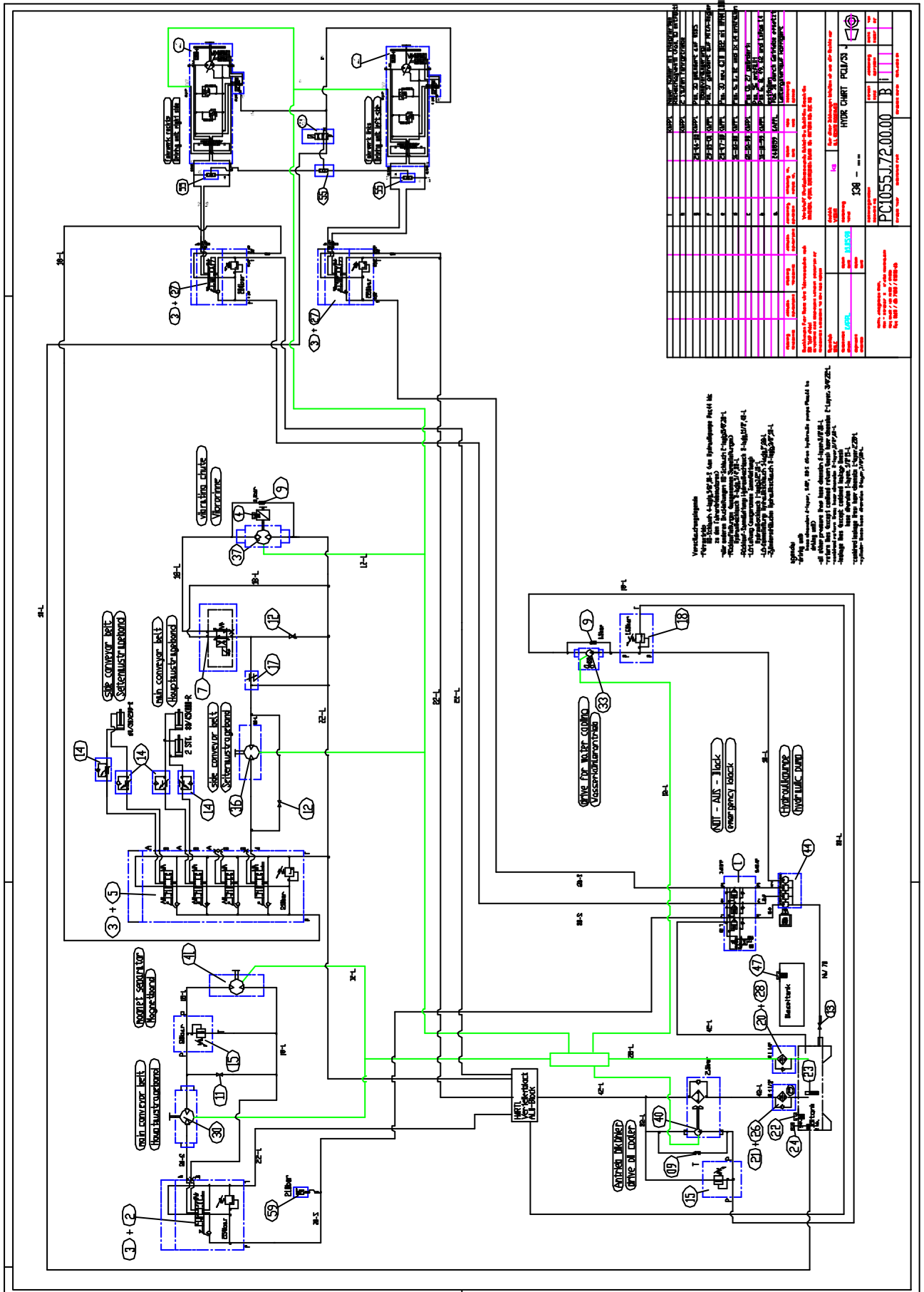
17a



19

SPARE PARTS PC 10/55J

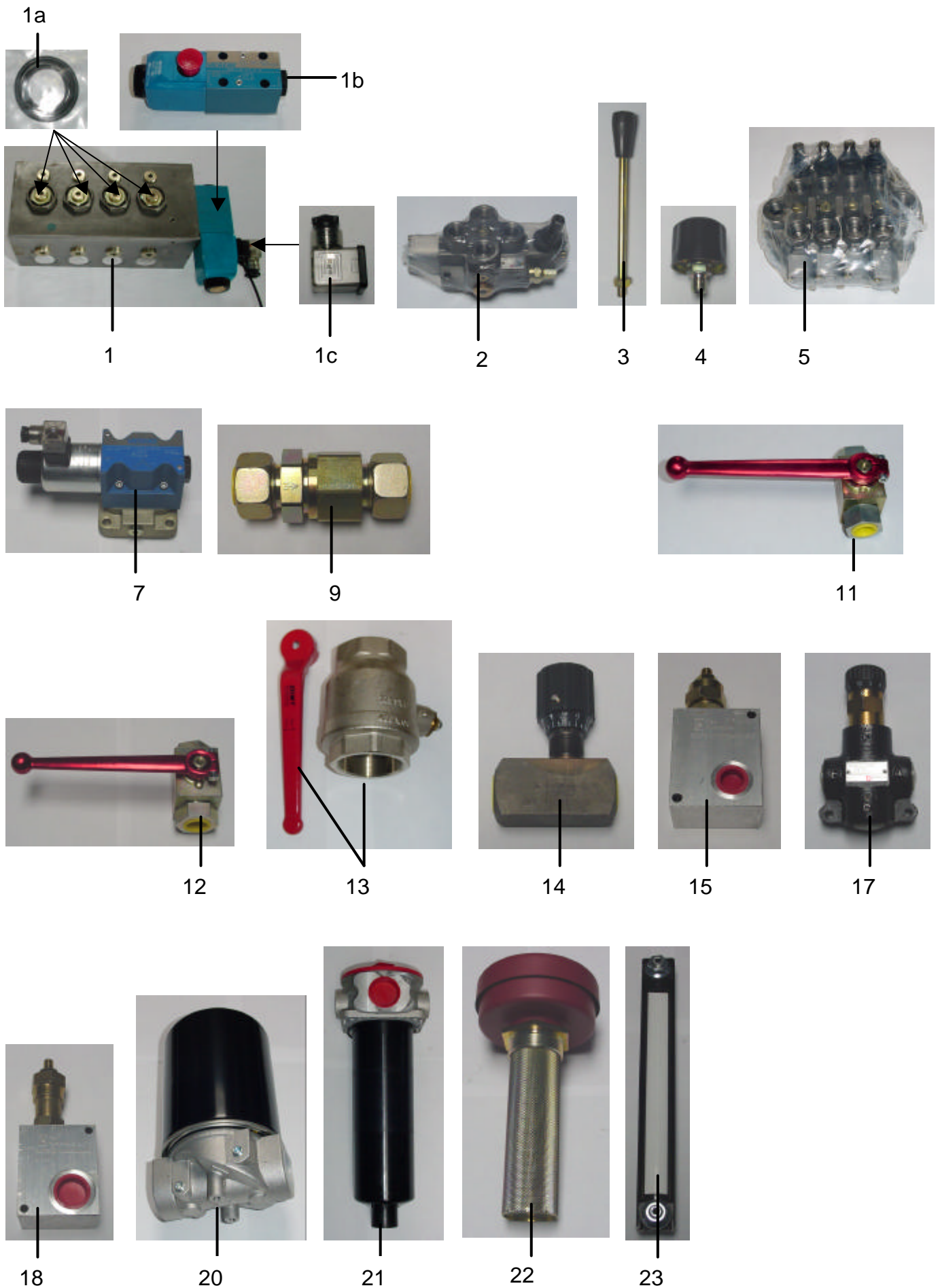
9 HYDRAULIC COMPONENTS: HYDR. SCHEDULE PC1055J.072.00.00BI



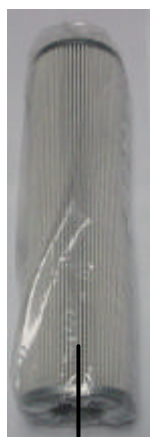
SPARE PARTS PC 10/55J

Pos.	Quant.	Designation	ARTICLE NO.
1	1	EMERGENCY BLOCK	HYWEGEVENT2/23
1a	1	SEALS FOR VALVE BLOCK	HYWEGEDICHTSA
1b	1	VALVE	HYWEGE4/2NG06REP
1c	1	VALVE PLUG 24	HYVENTILSTECK2
2	1	VALVE	HYVENTHDM18/1K02
3	6	HANDLEVER	HYHANDHEBEL185
4	1	FILTER	HYFILBFP4G10
5	1	VALVE	HYVENTHDM18/4K02
7	1	VALVE FOR VIBRATING CHUTE	HYVENTDG4V52AJ
9	3	CHECK VALVE	HYVENTRHD18PL
11	1	BALL VALVE	HYKHHDKHBG1/2
12	2	BALL VALVE	HYKHHDKHBG3/4
13	1	BALL VALVE	HYKHND21/2
14	4	THROTTLE VALVE	HYVENTDRV12-1.0
15	2	PRESSURE REDUCTION VALVE	HYVENTDBGR1/2
17	1	FLOW DEVIDER	HYMTMTKAVDM08
18	1	PRESSURE REDUCTION VALVE	HYVENTDBGR3/4
20	1	FILTER	HYFILWPL90-10
21	1	RETURN LINE FILTER	HYFILRLTEF426
22	1	FILTER	HYFILELFP5G10W2
23	1	OIL REGARDING CAP	ÖLSCHAUFSA254
24	1	LEVEL SWITCH	HYSCHWIMMSSM2
26	1	FILTER ELEMENT	HYFILS01.E42510P
27	2	VALVE	HYVENTHDM18/1KEHI
28	1	FILTER ELEMENT	HYFILESWP90-10
29	1	POLLUTION CONTROLL UNIT	HYVERSCHMANZOA
30	1	DRIVE MAIN CONVEYOR BELT	HYMMSE05V
33	1	DRIVE WATER COOLER	HYMZR2026/GR2
36	1	DRIVE SIDE CNVEYOR BELT	HYM315/25OMP0617
37	1	DRIVE VIBRATING CHUTE	HYMZR3050M3AAP
40	1	DRIVE OIL COOLER	HYLKÖKÖMOT11
41	1	DRIVE MAGNETIC BELT	HYM495EATON
42	2	CHAIN DRIVE	LWGETMAG85VP11
44	1	HYDRAULIC PUMP	HYPP4FACHLI32CCM
47	1	FILTER	HYFILBF3101.0
53	1	VALVE FOR SECOND SPEED	HYVENTDG4V32AMUH760
55	3	VALVE	HYVENTWVT12S-1
59	1	PRESSURE SWITCH	HYDRUCKSCHDS507

SPARE PARTS PC 10/55J



SPARE PARTS PC 10/55J



26



27



28



29



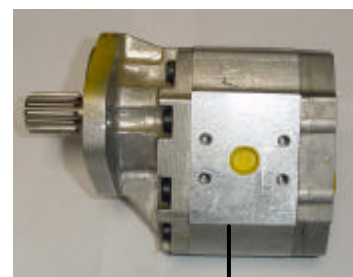
30



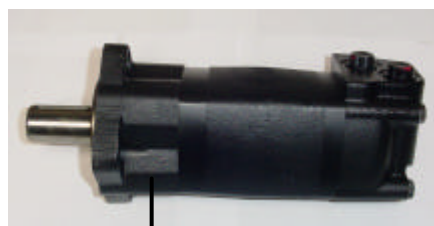
33



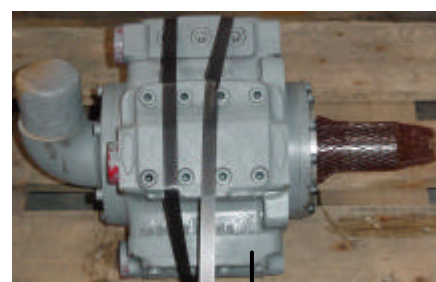
36



37



41



44



47

SPARE PARTS PC 10/55J

10 ELECTRIC-SCHEDULE PC 10/55 J

Pos.	Quant.	Part number	Designation	Article No.
1	2	-K2.2,-K5.2	relais 24VDC incl. safetydiode	E9150000
2	2	-K2.2,-K5.2	relaissocket	E9150001
3	2	Reserve	relais 24VDC incl. safetydiode	E9150000
4	2	Reserve	relaissocket	E9150001
5				
6	1	-E6.2	radio control unit receiver	
7	1	-E6.2	radio control unit handtransmitter	
8	1	-E6.2	radio control unit antenna	
9	1	-E6.2	radio control unit charger	
10	1	-S5.21/-H5.2	push-botton green illuminated	E9003060
10a	11		coupling unit	E9003300
11	1	-S5.21/-H5.2	lampholder	E9003303
12	1	-S5.21/-H5.2	contact NO	E9003301
13	1	-S5.21/-H5.2	lamp 24VDC	E9986025
14	1	-S5.21/-H5.2	silikosis cover	E9003410
15				
16				
17				
18	1	-S1.11	emergency stop	E9003160
19	1	-S1.11	shield emergency stop	E9003404
20	1	-S5.22/-H6.5	push-botton red	E9003006
21				
22	1	-S5.22/-H6.5	contact NC	E9003302
23				
24	1	-S5.22/-H6.5	silikosis cover	E9003408
25	1	-S6.3	switch 3 pos	E9003200
26	2	-S6.3	contact NO	E9003301
27	1	-S6.3	shieldholder	E9003450
28	1	-S6.3	shield "I 0 II"	E9003456
29	1	-S4.1	switch 2 pos	E9003180
30	1	-S4.1	contact NO	E9003301
31	1	-S4.1	shield holder	E9003450
32	1	-S4.1	shield "0 I"	E9003452
33	1	-S1.0	ignition key	E9106002
34	1	-P1	fuel indication	E9170220
35	1	-R1	fuel giver 479mm	E9170007
36	1	-R1	fuel holder	E9170000
37	1	-E2.2	motor control unit	
38	2	-S2.5	push-botton green	E9003060
39				
40	1	-H3.4	lamp transparency	E9003128
41	1	-H3.5	lamp red	E9003122
42	2	-H3.4,-H3.5	lamp holder	E9003303
43	2	-H3.4,-H3.5	lamp 24VDC	E9986025
44	1		alutabseau	E9160005
45			electric box	E9160007
46	1	-F4.1	Circuit breaker B16A	ESCHUTZETA16A
47	1	-F4.2	Circuit breaker B10A	ESCHUTZETA10A

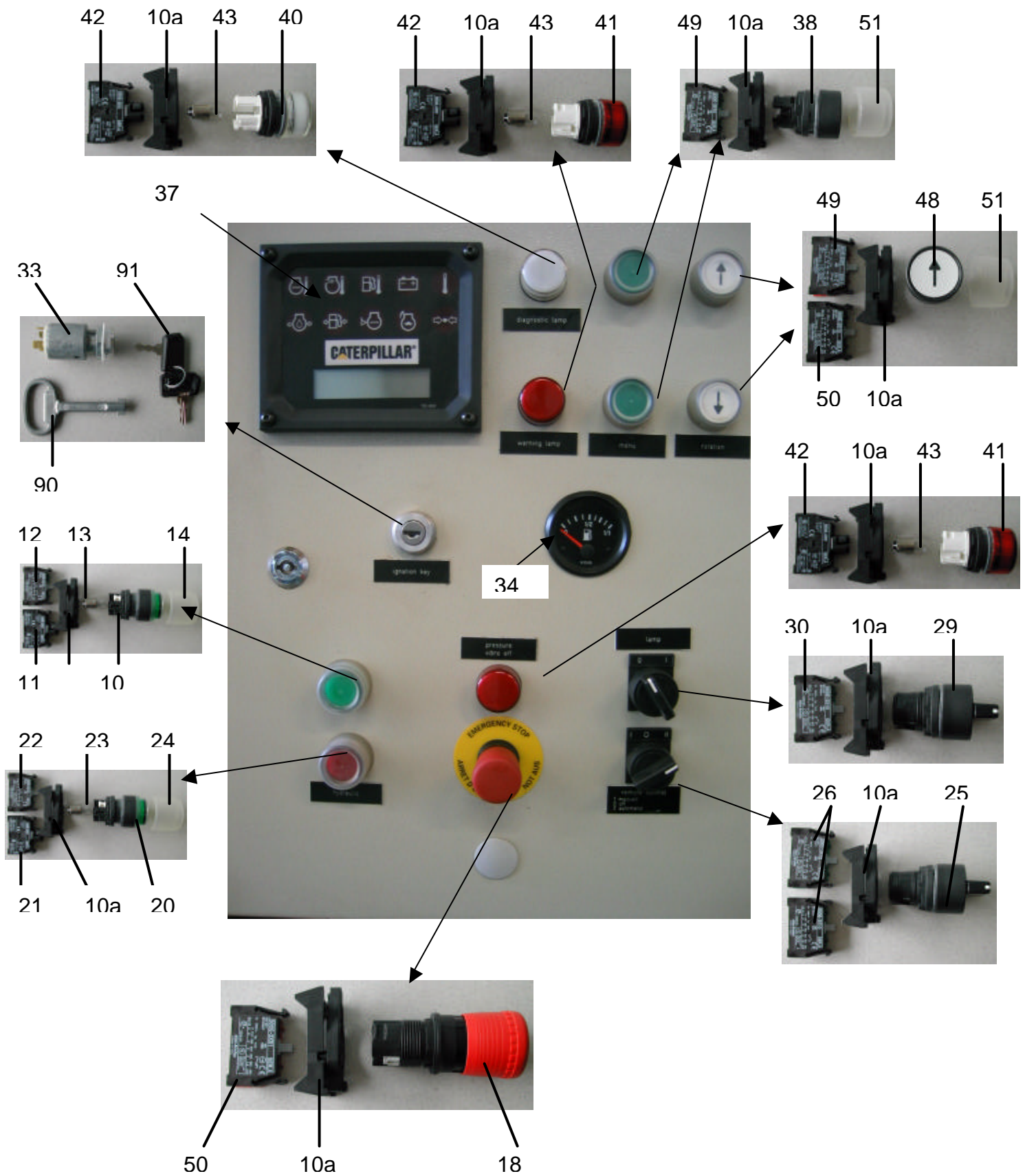
SPARE PARTS PC 10/55J

48	2	-S7.51,-S7.52	push-botton white with arrow	E9003001
49	4	-S7.51,-S7.52,-S2.5	Contact NO	E9003301
50	6	-S7.51,-S7.52,-S1.11,-S1.12,...	Contact NC	E9003302
51	4	-S7.51,-S7.52,-S2.5	Silikosis cover	E9003408
Austaster/ push putton off				
52	2	-S4.7,-S4.8	Nut PG16	E1013640
53	2	-S4.7,-S4.8	Overhead plug	E9003360
54	2	-S4.7,-S4.8	Contact NC	E9003302
55	2	-S4.7,-S4.8	Push-botton red	E9003006
56	2	-S4.7,-S4.8	Slikosis cover	E9003408
57	2	-S4.7,-S4.8	Wire crewing PG16 V-T	E1013540
Schwimmerschalter / floating switch				
58	1	-S4.3	Floating switch	HYSCHWIMMSSMR
Not Aus Extern / emergency stop extern				
59	3	-S1.12,-S1.13,-S1.14	emergency stop	E9003160
60	3	-S1.12,-S1.13,-S1.14	metalbox yellow	E9003364
61	3	-S1.12,-S1.13,-S1.14	wire crewing PG16 V-T	E1013540
62	3	-S1.12,-S1.13,-S1.14	nut PG16	E1013640
Seilzugschalter Extern / rope drive switch extern				
63	2	-S4.5,-S4.6	Rope drive switch	E9072011
Stecker f. Bänder extern / plug f. convayor extern				
64	2		pluge socket closed 6 pol	E9067102
65	2		socket 6 pol	E9067000
66	3		overhead plug 6 pol	E9067200
67	3		plug 6 pol	E9067010
68	1		blind screwing	E1013970
Temperaturregeber extern /temperature switch extern				
69	2	-S11.8	hydrauliccoiltemperature switch	E9175005
Kabel / cable				
70	150		Cable 3x1,5	E2160013
71	50		Cable 5x1,5	E2160015
72	10		Cable 7x1,5	E2160016
73	10		Cable 2x2x0,75	E2160050
Startrelais/startrelais				
74	1	-K2.1	startrelais	E9154000
Arbeitsscheinwerfer/working lamp				

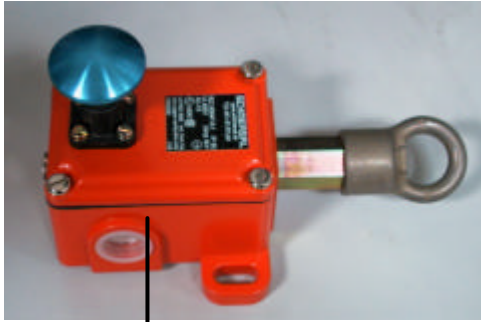
SPARE PARTS PC 10/55J

75	2	-H4.1,-H4.2	lamp with grating (without holder)	SCHEINWERFER
Batterieschalter/batterieswitch				
77	1	-S1.1	batterieswitch	EBATTERIESCHAL
Batterie/batterie				
78	2	-G2.1,-G2.2	batterie	EBATTERIE 140
79	2	-G2.1,-G2.2	batterieterminal minus	EBATTERIEKLMIN
80	2	-G2.1,-G2.2	batterieterminal plus	EBATTERIEKLPLU
Schlüssel/ keys				
90	1		panel key	E9160015
91	1		starting key	E9106008
100	1	-H11.8	horn	E9056400

SPARE PARTS PC 10/55J



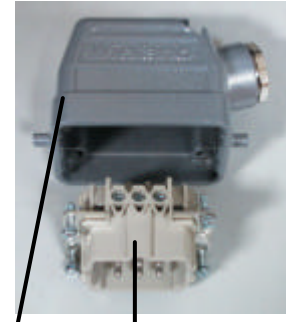
SPARE PARTS PC 10/55 J



63

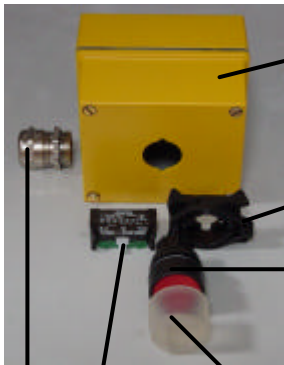


74



66

67



53

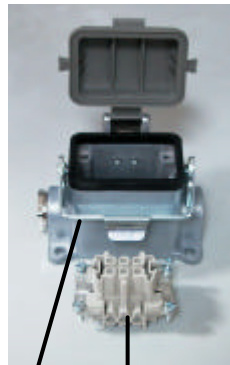
10a

55

57

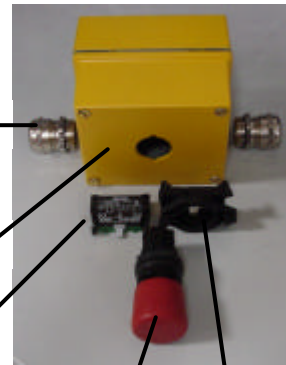
54

56



64

65



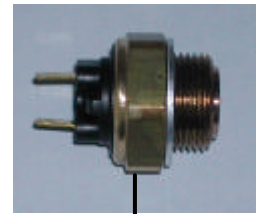
61

60

50

59

10a



69



77



1

2

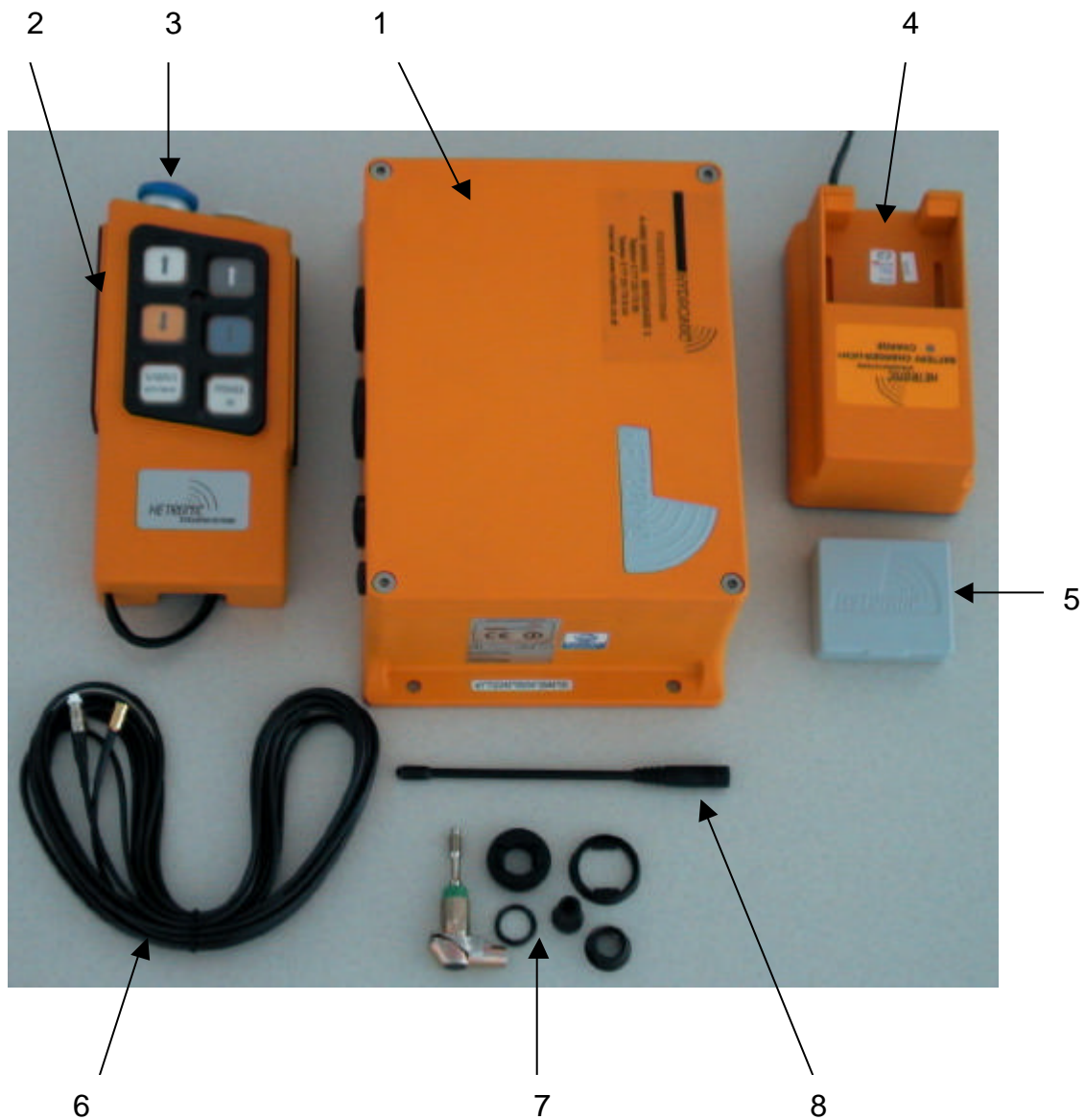
46

47

SPARE PARTS PC 10/55 J

11 REMOTE CONTROL

Pos.	Quant	Designation	Article-No.
1	1	radio control unit receiver	FERNSTEMPFGA609
2	1	radio control unit handtransmitter	FERNSTHANDSENDERGOV2
3	1	on/ off - botton	FERNSTHYDROTASTBLAU
4	1	radio control unit charger	FERNSTLADEGERAT
5	2	Akku	FERNSTAKKUMINI
6	2	radio control unit antenna	FERNSTANTKAB5M
7	1	antenna foot	FERNSTANTFUSSHYDR
8	1	antenna	FERNSTANTSTAB



12 GENERAL

ALL INFORMATION OF THIS PUBLICATION IS BASED ON THE LATEST PRODUCT-DEVELOPMENT-INFORMATION, WHICH WAS AVAILABLE AT TIME OF THE GRANT TO PRINT. POWERCRUSHER GMBH RESERVES ALL RIGHTS TO PUT ON CHANGES AT ANY TIME AND WITHOUT ADVANCE NOTICE, WITHOUT UNDERTAKING ANY OBLIGATION.

NOT ANY PART OF THIS PUBLICATION HAS TO BE REPRODUCED WITHOUT WRITTEN GRANT OF POWERCRUSHER GMBH MAUTHAUSEN

MISPRINTS RESERVED.

POWERCRUSHER GMBH CONTACT ADDRESS :

AUSTRIA:

POWERCRUSHER GmbH
PEM Straße 2
A-4310 Mauthausen

Tel: 0043 / (0) 7238 / 29350
Fax: 0043 / (0) 7238 / 29350-40

E-mail TECHNIC : kaph@powercrusher.com

E-mail SERVICE : kalh@powercrusher.com

E-mail SPAREPARTS : kass@powercrusher.com